

## TEST REPORT

### CLIENT DETAILS

**Client Name:** Hangzhou HangminDamei Dyeing Arrangements Co., Ltd.  
**Client Contact:** Baiqing Shi  
**Telephone:** 13003612272  
**E-mail:** [2450757020@qq.com](mailto:2450757020@qq.com)  
**Address:** Hangmin Industry Area, Guali Town, Xiaoshan District, Hangzhou City, Zhejiang Province

### LABORATORY DETAILS

**SGS Affiliate:** SGS-CSTC Standards Technical Services (Shanghai) Co., Ltd  
**SGS Contact:** Lily Li  
**Telephone:** +86(021) 61072854  
**E-mail:** [Lily-Li@sgs.com](mailto:Lily-Li@sgs.com)  
**Address:** The 4th Building, No.889, Yishan Road, Xuhui District, Shanghai, China

### FACTORY DETAILS

**Factory Name:** Hangzhou HangminDamei Dyeing Arrangements Co., Ltd.  
**Factory Contact:** Baiqing Shi  
**Telephone:** 13003612272  
**E-mail:** [2450757020@qq.com](mailto:2450757020@qq.com)  
**Address:** Hangmin Industry Area, Guali Town, Xiaoshan District, Hangzhou City, Zhejiang Province  
**Types of Mills:** (3) Fabric Dyeing, Finishing, Washing (4) Fabric Dyeing, Finishing, Printing  
(5) Vertical Knit (6) Vertical Woven  
**On-Site ETP:** No  
**Discharge Destination:** To Centralized Waste Water Treatment Plant  
**Name of Municipal/Centralized ETP:** Xiaoshan Dongpian Sewage Treatment Co., Ltd.  
**Address of Municipal/Centralized ETP:** Yunxi Village, Guali Town, Hangzhou City

### SAMPLE AND TESTING DETAILS

**Sampling Country:** SGS China SL  
**ZDHC Sampler's Certification No.:** C74D106818116  
**Sampling Date:** 08-04-2023  
**Sample Received Date:** 09-04-2023  
**Test Performing Period:** 09-04-2023 - 21-04-2023  
**No. of Samples:** Water (2)  
**Sample Descriptions:** 1) Incoming Water (Grab)  
2) Untreated Wastewater (6-hour Composite)  
**Sample Volume:** 1) Incoming Water (12L)  
2) Untreated Wastewater (16L)  
**Testing Institute:** SGS Shanghai  
**Discharge Method:** Indirect Discharge

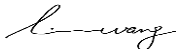
### OVERALL RESULTS

	Incoming Water	Untreated Wastewater
Conventional Parameters / Anions / Metals:	Not Tested	Fulfill Aspirational Limit
MRSL Parameters:	Not Tested	Not Detected

### REMARKS

1. This test document cannot be reproduced in any way, except in full content, without prior approval in writing by the laboratory.
2. The results shown in this test report refer only to the sampling and the sample(s) tested unless otherwise stated.

Signed for and on behalf of  
SGS-CSTC Standards Technical Services (Shanghai) Co., Ltd



Linda Wang  
Chemical Manager

**RESULT SUMMARY**

Factory Name: Hangzhou HangminDamei Dyeing Arrangements Co., Ltd.  
 Factory Address: Hangmin Industry Area, Guali Town, Xiaoshan District, Hangzhou City, Zhejiang Province

TEST ITEMS	Incoming Water	Untreated Wastewater
Conventional Parameters	-	-
Anions	-	-
Metals	N/A	O
Alkylphenol (AP) & Alkylphenol Ethoxylates (APEOs)	N/A	O
Anti-Microbials & Biocides	N/A	O
Chlorinated Paraffins	N/A	O
Chlorobenzenes and Chlorotoluenes	N/A	O
Chlorophenols	N/A	O
Dimethyl Formamide (DMFa)	N/A	O
Dyes - Carcinogenic or Equivalent Concern	N/A	O
Dyes - Disperse (Allergenic)	N/A	O
Dyes - Navy Blue Colourant	N/A	O
Flame Retardants	N/A	O
Glycols / Glycol Ethers	N/A	O
Halogenated Solvents	N/A	O
Organotin Compounds	N/A	O
Other / Miscellaneous Chemicals	N/A	O
Perfluorinated and Polyfluorinated Chemicals (PFCs)	N/A	O
Phthalates	N/A	O
Polycyclic Aromatic Hydrocarbons (PAHs)	N/A	O
Restricted Aromatic Amines	N/A	O
UV Absorbers	N/A	O
Volatile Organic Compounds (VOCs)	N/A	O

Note:

X - Detected

O - Not Detected

N/A - Not Tested / Not Applicable

TEST RESULTS

Factory Name: Hangzhou HangminDamei Dyeing Arrangements Co., Ltd.

Factory Address: Hangmin Industry Area, Guali Town, Xiaoshan District, Hangzhou City, Zhejiang Province

Items	Sample ID		Date of Sampling		Sampling Location		Sampling Start Time		Sampling End Time		Date of Sample Received		Factory Performances	Local Wastewater Discharged Requirement%		
	52305265643401-01		52305265643401-02		08-04-2023		08-04-2023		Inlet collection tank		Raw wastewater collection tank					
	-		-		Colorless		Rust		-		-					
	-		-		m <sup>3</sup> /day		8000		-		-					
	-		-		mg/L		N/A		n.d.		N/A				Fulfill Aspirational Limit	
	-		-		mg/L		N/A		n.d.		N/A				Fulfill Aspirational Limit	
<b>Metals</b>																
Chromium (VI)	7440-47-3, 18540-29-9	0.001	mg/L	N/A	n.d.	N/A	Fulfill Aspirational Limit	N/A								
Total Arsenic (As)	7440-38-2	0.005	mg/L	N/A	n.d.	N/A	Fulfill Aspirational Limit	N/A								
Total Cadmium (Cd)	7440-43-9	0.01	mg/L	N/A	n.d.	N/A	Fulfill Aspirational Limit	N/A								
Total Lead (Pb)	7439-92-1	0.01	mg/L	N/A	n.d.	N/A	Fulfill Aspirational Limit	N/A								
Total Zinc (Zn)	7440-66-6	0.1	mg/L	N/A	n.d.	N/A	Not Detected	N/A								
Total Mercury (Hg)	7439-97-6	0.001	mg/L	N/A	n.d.	N/A	Fulfill Aspirational Limit	N/A								
Total Boron (B)	7440-42-8	0.1	mg/L	N/A	n.d.	N/A	Not Detected	N/A								
<b>Alkylphenol (AP) and Alkylphenol Ethoxylates (APEOs): including all isomers</b>																
Nonylphenol ethoxylates (NPEO)	9016-45-9, 26027-38-3, 37205-87-1, 68412-54-4, 127087-87-0	5	µg/L	N/A	n.d.	N/A	Not Detected	N/A								
Nonylphenol (NP), mixed isomers	11066-49-2, 25154-52-3, 84852-15-3	5	µg/L	N/A	n.d.	N/A	Not Detected	N/A								
Octylphenol ethoxylates (OPEO)	9002-93-1, 9036-19-5, 68987-90-6	5	µg/L	N/A	n.d.	N/A	Not Detected	N/A								
Octylphenol (OP), mixed isomers	140-66-9, 1806-26-4, 27193-28-8	5	µg/L	N/A	n.d.	N/A	Not Detected	N/A								
<b>Anti- Microbials &amp; Biocides</b>																
o-Phenylphenol (+salts)	90-43-7	100	µg/L	N/A	n.d.	N/A	Not Detected	N/A								
Triclosan	3380-34-5	100	µg/L	N/A	n.d.	N/A	Not Detected	N/A								
Permethrin	Multiple	500	µg/L	N/A	n.d.	N/A	Not Detected	N/A								
<b>Chlorinated Paraffins</b>																
Medium-chain Chlorinated Paraffins (MCCPs) (C14-C17)	85535-85-9	500	µg/L	N/A	n.d.	N/A	Not Detected	N/A								
Short-chain Chlorinated Paraffin (SCCPs) (C10-C13)	85535-84-8	25	µg/L	N/A	n.d.	N/A	Not Detected	N/A								
<b>Chlorobenzenes and Chlorotoluenes</b>																
Monochlorobenzenes	108-90-7	0.2	µg/L	N/A	n.d.	N/A	Not Detected	N/A								
1,2-Dichlorobenzene	95-50-1	0.2	µg/L	N/A	n.d.	N/A	Not Detected	N/A								
1,3-Dichlorobenzene	541-73-1	0.2	µg/L	N/A	n.d.	N/A	Not Detected	N/A								
1,4-Dichlorobenzene	106-46-7	0.2	µg/L	N/A	n.d.	N/A	Not Detected	N/A								
1,2,3-Trichlorobenzene	87-61-6	0.2	µg/L	N/A	n.d.	N/A	Not Detected	N/A								

TEST RESULTS

Factory Name: Hangzhou HangminDamei Dyeing Arrangements Co., Ltd.  
Factory Address: Hangmin Industry Area, Guali Town, Xiaoshan District, Hangzhou City, Zhejiang Province

Items	CAS No.	Reporting Limit	Units	Sample ID		Factory Performances		Local Wastewater Discharged Requirement%
				Date of Sampling				
				Sampling Location				
				Sampling Start Time				
				Sampling End Time				
				Date of Sample Received				
				52305265643401-01	52305265643401-02			
				08-04-2023	08-04-2023			
				Inlet collection tank	Raw wastewater collection tank			
				14:30	9:10			
				14:50	15:20			
				21-04-2023	21-04-2023			
				Incoming Water	Untreated Wastewater	Incoming Water	Untreated Wastewater	Effluent
1,2,4-Trichlorobenzene	120-82-1	0.2	µg/L	N/A	n.d.	N/A	Not Detected	-
1,3,5-Trichlorobenzene	108-70-3	0.2	µg/L	N/A	n.d.	N/A	Not Detected	-
1,2,3,4-Tetrachlorobenzene	634-66-2	0.2	µg/L	N/A	n.d.	N/A	Not Detected	-
1,2,3,5-Tetrachlorobenzene	634-90-2	0.2	µg/L	N/A	n.d.	N/A	Not Detected	-
1,2,4,5-Tetrachlorobenzene	95-94-3	0.2	µg/L	N/A	n.d.	N/A	Not Detected	-
Pentachlorobenzene	608-93-5	0.2	µg/L	N/A	n.d.	N/A	Not Detected	-
Hexachlorobenzene	118-74-1	0.2	µg/L	N/A	n.d.	N/A	Not Detected	-
2-Chlorotoluene	95-49-8	0.2	µg/L	N/A	n.d.	N/A	Not Detected	-
3-Chlorotoluene	108-41-8	0.2	µg/L	N/A	n.d.	N/A	Not Detected	-
4-Chlorotoluene	106-43-4	0.2	µg/L	N/A	n.d.	N/A	Not Detected	-
2,3-Dichlorotoluene	32768-54-0	0.2	µg/L	N/A	n.d.	N/A	Not Detected	-
2,4-Dichlorotoluene	95-73-8	0.2	µg/L	N/A	n.d.	N/A	Not Detected	-
2,5-Dichlorotoluene	19398-61-9	0.2	µg/L	N/A	n.d.	N/A	Not Detected	-
2,6-Dichlorotoluene	118-69-4	0.2	µg/L	N/A	n.d.	N/A	Not Detected	-
3,4-Dichlorotoluene	95-75-0	0.2	µg/L	N/A	n.d.	N/A	Not Detected	-
3,5-Dichlorotoluene	25186-47-4	0.2	µg/L	N/A	n.d.	N/A	Not Detected	-
2,3,4-Trichlorotoluene	7359-72-0	0.2	µg/L	N/A	n.d.	N/A	Not Detected	-
2,3,6-Trichlorotoluene	2077-46-5	0.2	µg/L	N/A	n.d.	N/A	Not Detected	-
2,4,5-Trichlorotoluene	6639-30-1	0.2	µg/L	N/A	n.d.	N/A	Not Detected	-
2,4,6-Trichlorotoluene	23749-65-7	0.2	µg/L	N/A	n.d.	N/A	Not Detected	-
3,4,5-Trichlorotoluene	21472-86-6	0.2	µg/L	N/A	n.d.	N/A	Not Detected	-
2,3,4,5-Tetrachlorotoluene	76057-12-0	0.2	µg/L	N/A	n.d.	N/A	Not Detected	-
2,3,5,6-Tetrachlorotoluene	29733-70-8	0.2	µg/L	N/A	n.d.	N/A	Not Detected	-
2,3,4,6-Tetrachlorotoluene	875-40-1	0.2	µg/L	N/A	n.d.	N/A	Not Detected	-
Pentachlorotoluene	877-11-2	0.2	µg/L	N/A	n.d.	N/A	Not Detected	-
<b>Chlorophenols</b>								
2-Chlorophenol	95-57-8	0.5	µg/L	N/A	n.d.	N/A	Not Detected	-



TEST RESULTS

Factory Name: Hangzhou HangminDamei Dyeing Arrangements Co., Ltd.

Factory Address: Hangmin Industry Area, Guali Town, Xiaoshan District, Hangzhou City, Zhejiang Province

Items	CAS No.	Reporting Limit	Units	Incoming Water	Untreated Wastewater	Factory Performances		Local Wastewater Discharged Requirement%	
						Sample ID	52305265643401-01		52305265643401-02
						Date of Sampling	08-04-2023		08-04-2023
						Sampling Location	Inlet collection tank		Raw wastewater collection tank
						Sampling Start Time	14:30		9:10
						Sampling End Time	14:50		15:20
Date of Sample Received	21-04-2023	21-04-2023							
				Incoming Water	Untreated Wastewater	Incoming Water	Untreated Wastewater	Effluent	
3-Chlorophenol	108-43-0	0.5	µg/L	N/A	n.d.	N/A	Not Detected	-	
4-Chlorophenol	106-48-9	0.5	µg/L	N/A	n.d.	N/A	Not Detected	-	
2,3-Dichlorophenol	576-24-9	0.5	µg/L	N/A	n.d.	N/A	Not Detected	-	
2,4-Dichlorophenol	120-83-2	0.5	µg/L	N/A	n.d.	N/A	Not Detected	-	
2,5-Dichlorophenol	583-78-8	0.5	µg/L	N/A	n.d.	N/A	Not Detected	-	
2,6-Dichlorophenol	87-65-0	0.5	µg/L	N/A	n.d.	N/A	Not Detected	-	
3,4-Dichlorophenol	95-77-2	0.5	µg/L	N/A	n.d.	N/A	Not Detected	-	
3,5-Dichlorophenol	591-35-5	0.5	µg/L	N/A	n.d.	N/A	Not Detected	-	
2,3,4-Trichlorophenol	15950-66-0	0.5	µg/L	N/A	n.d.	N/A	Not Detected	-	
2,3,5-Trichlorophenol	933-78-8	0.5	µg/L	N/A	n.d.	N/A	Not Detected	-	
2,3,6-Trichlorophenol	933-75-5	0.5	µg/L	N/A	n.d.	N/A	Not Detected	-	
2,4,5-Trichlorophenol	95-95-4	0.5	µg/L	N/A	n.d.	N/A	Not Detected	-	
2,4,6-Trichlorophenol	88-06-2	0.5	µg/L	N/A	n.d.	N/A	Not Detected	-	
3,4,5-Trichlorophenol	609-19-8	0.5	µg/L	N/A	n.d.	N/A	Not Detected	-	
2,3,5,6-Tetrachlorophenol	935-95-5	0.5	µg/L	N/A	n.d.	N/A	Not Detected	-	
2,3,4,6-Tetrachlorophenol	58-90-2	0.5	µg/L	N/A	n.d.	N/A	Not Detected	-	
2,3,4,5-Tetrachlorophenol	4901-51-3	0.5	µg/L	N/A	n.d.	N/A	Not Detected	-	
Pentachlorophenol (PCP)	87-86-5	0.5	µg/L	N/A	n.d.	N/A	Not Detected	-	
<b>Dimethyl Formamide (DMFa)</b>									
Dimethyl formamide; N,N-dimethylformamide (DMFa)***	68-12-2	1000	µg/L	N/A	n.d.	N/A	Not Detected	-	
<b>Dyes - Carcinogenic or Equivalent Concern</b>									
Basic Violet 3 with >0.1% of Michler's Ketoneb	548-62-9	500	µg/L	N/A	n.d.	N/A	Not Detected	-	
C.I. Acid Red 26	3761-53-3	500	µg/L	N/A	n.d.	N/A	Not Detected	-	
C.I. Acid Violet 49	1694-09-3	500	µg/L	N/A	n.d.	N/A	Not Detected	-	
C.I. Basic Blue 26 with Michler's Ketone >0.1%	2580-56-5	500	µg/L	N/A	n.d.	N/A	Not Detected	-	
C.I. Basic Green 4 (Malachite Green Chloride)^	569-64-2	500	µg/L	N/A	n.d.	N/A	Not Detected	-	
C.I. Basic Green 4 (Malachite Green Oxalate)^	2437-29-8	500	µg/L	N/A	n.d.	N/A	Not Detected	-	

TEST RESULTS

Factory Name: Hangzhou HangminDamei Dyeing Arrangements Co., Ltd.

Factory Address: Hangmin Industry Area, Guali Town, Xiaoshan District, Hangzhou City, Zhejiang Province

Items	CAS No.	Reporting Limit	Units	Sample ID		Factory Performances		Local Wastewater Discharged Requirement%	
				52305265643401-01	52305265643401-02				
				Date of Sampling	08-04-2023				08-04-2023
				Sampling Location	Inlet collection tank				Raw wastewater collection tank
				Sampling Start Time	14:30				9:10
				Sampling End Time	14:50				15:20
Date of Sample Received		21-04-2023	21-04-2023						
				Incoming Water	Untreated Wastewater	Incoming Water	Untreated Wastewater	Effluent	
C.I. Basic Green 4 (Malachite Green)	10309-95-2	500	µg/L	N/A	n.d.	N/A	Not Detected	-	
C.I. Basic Red 9	569-61-9	500	µg/L	N/A	n.d.	N/A	Not Detected	-	
C.I. Basic Violet 14	632-99-5	500	µg/L	N/A	n.d.	N/A	Not Detected	-	
C.I. Direct Black 38	1937-37-7	500	µg/L	N/A	n.d.	N/A	Not Detected	-	
C.I. Direct Blue 6	2602-46-2	500	µg/L	N/A	n.d.	N/A	Not Detected	-	
C.I. Direct Red 28	573-58-0	500	µg/L	N/A	n.d.	N/A	Not Detected	-	
C.I. Disperse Blue 1	2475-45-8	500	µg/L	N/A	n.d.	N/A	Not Detected	-	
C.I. Disperse Blue 3	2475-46-9	500	µg/L	N/A	n.d.	N/A	Not Detected	-	
Disperse Orange 11	82-28-0	500	µg/L	N/A	n.d.	N/A	Not Detected	-	
<b>Dyes - Disperse (Allergenic)</b>									
Disperse Blue 102	12222-97-8	50	µg/L	N/A	n.d.	N/A	Not Detected	-	
Disperse Blue 106	12223-01-7	50	µg/L	N/A	n.d.	N/A	Not Detected	-	
Disperse Blue 124	61951-51-7	50	µg/L	N/A	n.d.	N/A	Not Detected	-	
Disperse Blue 26	3860-63-7	50	µg/L	N/A	n.d.	N/A	Not Detected	-	
Disperse Blue 35	12222-75-2, 56524-77-7	50	µg/L	N/A	n.d.	N/A	Not Detected	-	
Disperse Blue 7	3179-90-6	50	µg/L	N/A	n.d.	N/A	Not Detected	-	
Disperse Brown 1	23355-64-8	50	µg/L	N/A	n.d.	N/A	Not Detected	-	
Disperse Orange 1	2581-69-3	50	µg/L	N/A	n.d.	N/A	Not Detected	-	
Disperse Orange 3	730-40-5	50	µg/L	N/A	n.d.	N/A	Not Detected	-	
Disperse Orange 37/59/76	13301-61-6	50	µg/L	N/A	n.d.	N/A	Not Detected	-	
Disperse Red 1	2872-52-8	50	µg/L	N/A	n.d.	N/A	Not Detected	-	
Disperse Red 11	2872-48-2	50	µg/L	N/A	n.d.	N/A	Not Detected	-	
Disperse Red 17	3179-89-3	50	µg/L	N/A	n.d.	N/A	Not Detected	-	
Disperse Yellow 1	119-15-3	50	µg/L	N/A	n.d.	N/A	Not Detected	-	
Disperse Yellow 3	2832-40-8	50	µg/L	N/A	n.d.	N/A	Not Detected	-	
Disperse Yellow 39	12236-29-2	50	µg/L	N/A	n.d.	N/A	Not Detected	-	
Disperse Yellow 49	54824-37-2	50	µg/L	N/A	n.d.	N/A	Not Detected	-	

TEST RESULTS

Factory Name: Hangzhou HangminDamei Dyeing Arrangements Co., Ltd.

Factory Address: Hangmin Industry Area, Guali Town, Xiaoshan District, Hangzhou City, Zhejiang Province

Items	CAS No.	Reporting Limit	Units	Sample ID		Factory Performances		Local Wastewater Discharged Requirement%
				52305265643401-01	52305265643401-02			
				Date of Sampling				
				Inlet collection tank				
				Raw wastewater collection tank				
				Date of Sample Received				
Disperse Yellow 9	6373-73-5	50	µg/L	N/A	n.d.	N/A	Not Detected	-
<b>Dyes - Navy Blue Colourant</b>								
Component 1: C39H23Cl-CrN7O12S 2Na	118685-33-9	500	µg/L	N/A	n.d.	N/A	Not Detected	-
Component 2: C46H-30CrN10O20S2 3Na	Not Allocated	500	µg/L	N/A	n.d.	N/A	Not Detected	-
<b>Flame Retardants</b>								
2,2-bis(bromomethyl)-1,3-propanediol (BBMP)	3296-90-0	25	µg/L	N/A	n.d.	N/A	Not Detected	-
Bis(2,3-dibromopropyl)phosphate (BIS)	5412-25-9	25	µg/L	N/A	n.d.	N/A	Not Detected	-
Decabromodiphenyl ether (DecaBDE)	1163-19-5	25	µg/L	N/A	n.d.	N/A	Not Detected	-
Hexabromocyclodecane (HBCDD)	3194-55-6	25	µg/L	N/A	n.d.	N/A	Not Detected	-
Octabromodiphenyl ether (OctaBDE)	32536-52-0	25	µg/L	N/A	n.d.	N/A	Not Detected	-
Pentabromodiphenyl ether (PentaBDE)	32534-81-9	25	µg/L	N/A	n.d.	N/A	Not Detected	-
Polybromobiphenyls (PBB)	59536-65-1	25	µg/L	N/A	n.d.	N/A	Not Detected	-
Tetrabromobisphenol A (TBBPA)	79-94-7	25	µg/L	N/A	n.d.	N/A	Not Detected	-
Tris(2-chloro-1-methylethyl)phosphate (TCPP)	13674-84-5	25	µg/L	N/A	n.d.	N/A	Not Detected	-
Tris(1-aziridinyl)phosphine oxide (TEPA)	545-55-1	25	µg/L	N/A	n.d.	N/A	Not Detected	-
Tris(1,3-dichloro-isopropyl)phosphate (TDCP)	13674-87-8	25	µg/L	N/A	n.d.	N/A	Not Detected	-
Tris(2-chloroethyl)phosphate (TCEP)	115-96-8	25	µg/L	N/A	n.d.	N/A	Not Detected	-
Tris(2,3-dibromopropyl)-phosphate (TRIS)	126-72-7	25	µg/L	N/A	n.d.	N/A	Not Detected	-
Decabromobiphenyl (DecaBB)	13654-09-6	25	µg/L	N/A	n.d.	N/A	Not Detected	-
Dibromobiphenyls (DiBB)	Multiple	25	µg/L	N/A	n.d.	N/A	Not Detected	-
Octabromobiphenyls (OctaBB)	Multiple	25	µg/L	N/A	n.d.	N/A	Not Detected	-
Dibromopropylether	21850-44-2	25	µg/L	N/A	n.d.	N/A	Not Detected	-
Heptabromodiphenyl ether (HeptaBDE)	68928-80-3	25	µg/L	N/A	n.d.	N/A	Not Detected	-
Hexabromodiphenyl ether (HexaBDE)	36483-60-0	25	µg/L	N/A	n.d.	N/A	Not Detected	-
Monobromobiphenyls (MonoBB)	Multiple	25	µg/L	N/A	n.d.	N/A	Not Detected	-
Monobromodiphenylethers (MonoBDEs)	Multiple	25	µg/L	N/A	n.d.	N/A	Not Detected	-
Nonabromobiphenyls (NonaBB)	Multiple	25	µg/L	N/A	n.d.	N/A	Not Detected	-

TEST RESULTS

Factory Name: Hangzhou HangminDamei Dyeing Arrangements Co., Ltd.

Factory Address: Hangmin Industry Area, Guali Town, Xiaoshan District, Hangzhou City, Zhejiang Province

	Sample ID		52305265643401-01	52305265643401-02	Factory Performances			Local Wastewater Discharged Requirement%
	Date of Sampling		08-04-2023	08-04-2023				
	Sampling Location		Inlet collection tank	Raw wastewater collection tank				
	Sampling Start Time		14:30	9:10				
	Sampling End Time		14:50	15:20				
	Date of Sample Received		21-04-2023	21-04-2023				
Items	CAS No.	Reporting Limit	Units	Incoming Water	Untreated Wastewater	Incoming Water	Untreated Wastewater	Effluent
Nonabromodiphenyl ether (NonaBDE)	63936-56-1	25	µg/L	N/A	n.d.	N/A	Not Detected	-
Tetrabromodiphenyl ether (TetraBDE)	40088-47-9	25	µg/L	N/A	n.d.	N/A	Not Detected	-
Tribromodiphenylethers (TriBDEs)	Multiple	25	µg/L	N/A	n.d.	N/A	Not Detected	-
Boric acid	10043-35-3, 11113-50-1	100	µg/L	N/A	See Total Boron (B) Result	N/A	Not Detected	-
Diboron trioxide	1303-86-2	100	µg/L	N/A	See Total Boron (B) Result	N/A	Not Detected	-
Disodium octaborate	12008-41-2	100	µg/L	N/A	See Total Boron (B) Result	N/A	Not Detected	-
Disodium tetraborate anhydrous	1303-96-4, 1330-43-4	100	µg/L	N/A	See Total Boron (B) Result	N/A	Not Detected	-
Tetraboron disodium heptaoxide, hydrate	12267-73-1	100	µg/L	N/A	See Total Boron (B) Result	N/A	Not Detected	-
<b>Glycols / Glycol Ethers</b>								
2-ethoxyethanol	110-80-5	50	µg/L	N/A	n.d.	N/A	Not Detected	-
2-ethoxyethyl acetate	111-15-9	50	µg/L	N/A	n.d.	N/A	Not Detected	-
2-methoxyethanol	109-86-4	50	µg/L	N/A	n.d.	N/A	Not Detected	-
2-methoxyethylacetate	110-49-6	50	µg/L	N/A	n.d.	N/A	Not Detected	-
2-methoxypropylacetate	70657-70-4	50	µg/L	N/A	n.d.	N/A	Not Detected	-
Bis(2-methoxyethyl)-ether	111-96-6	50	µg/L	N/A	n.d.	N/A	Not Detected	-
Ethylene glycol dimethyl ether	110-71-4	50	µg/L	N/A	n.d.	N/A	Not Detected	-
Triethylene glycol dimethyl ether	112-49-2	50	µg/L	N/A	n.d.	N/A	Not Detected	-
<b>Halogenated Solvents</b>								
1,2-Dichloroethane	107-06-2	1	µg/L	N/A	n.d.	N/A	Not Detected	-
Methylene chloride	75-09-2	1	µg/L	N/A	n.d.	N/A	Not Detected	-
Tetrachloroethylene	127-18-4	1	µg/L	N/A	n.d.	N/A	Not Detected	-
Trichloroethylene	79-01-6	1	µg/L	N/A	n.d.	N/A	Not Detected	-
<b>Organotin Compounds</b>								
Dipropyltin compounds (DPT)	Multiple	0.01	µg/L	N/A	n.d.( $<0.10 \mu\text{g/L}$ ) <sup>1</sup>	N/A	Not Detected	-
Mono-, di- and tri-butyltin derivatives	Multiple	0.01	µg/L	N/A	n.d.( $<0.10 \mu\text{g/L}$ ) <sup>1</sup>	N/A	Not Detected	-
Monobutyltin (MBT)	1118-46-3, 78763-54-9	0.01	µg/L	N/A	n.d.( $<0.10 \mu\text{g/L}$ ) <sup>1</sup>	N/A	Not Detected	-
Dibutyltin (DBT)	1002-53-5	0.01	µg/L	N/A	n.d.( $<0.10 \mu\text{g/L}$ ) <sup>1</sup>	N/A	Not Detected	-
Tributyltin (TBT)	56573-85-4	0.01	µg/L	N/A	n.d.( $<0.10 \mu\text{g/L}$ ) <sup>1</sup>	N/A	Not Detected	-



TEST RESULTS

Factory Name: Hangzhou HangminDamei Dyeing Arrangements Co., Ltd.  
Factory Address: Hangmin Industry Area, Guali Town, Xiaoshan District, Hangzhou City, Zhejiang Province

Items	CAS No.	Reporting Limit	Units	Sample ID		Factory Performances		Local Wastewater Discharged Requirement%
				52305265643401-01	52305265643401-02			
				Date of Sampling	Date of Sampling			
				08-04-2023	08-04-2023			
				Sampling Location	Sampling Location			
				Inlet collection tank	Raw wastewater collection tank			
Sampling Start Time	Sampling Start Time							
14:30	9:10							
Sampling End Time	Sampling End Time							
14:50	15:20							
Date of Sample Received	Date of Sample Received							
21-04-2023	21-04-2023							
Incoming Water	Untreated Wastewater	Incoming Water	Untreated Wastewater	Effluent				
Mono-, di- and tri-methyltin derivatives	Multiple	0.01	µg/L	N/A	n.d.( $<0.10 \mu\text{g/L}$ ) <sup>1</sup>	N/A	Not Detected	-
Monomethyltin (MMT)	Multiple	0.01	µg/L	N/A	n.d.( $<0.10 \mu\text{g/L}$ ) <sup>1</sup>	N/A	Not Detected	-
Dimethyltin (DMT)	Multiple	0.01	µg/L	N/A	n.d.( $<0.10 \mu\text{g/L}$ ) <sup>1</sup>	N/A	Not Detected	-
Trimethyltin (TMT)	Multiple	0.01	µg/L	N/A	n.d.( $<0.10 \mu\text{g/L}$ ) <sup>1</sup>	N/A	Not Detected	-
Mono-, di- and tri-octyltin derivatives	Multiple	0.01	µg/L	N/A	n.d.( $<0.10 \mu\text{g/L}$ ) <sup>1</sup>	N/A	Not Detected	-
Monooctyltin (MOT)	15231-57-9	0.01	µg/L	N/A	n.d.( $<0.10 \mu\text{g/L}$ ) <sup>1</sup>	N/A	Not Detected	-
Diocetyl tin (DOT)	94410-05-6, 12531-44-4	0.01	µg/L	N/A	n.d.( $<0.10 \mu\text{g/L}$ ) <sup>1</sup>	N/A	Not Detected	-
Triocetyl tin (TOT)	Multiple	0.01	µg/L	N/A	n.d.( $<0.10 \mu\text{g/L}$ ) <sup>1</sup>	N/A	Not Detected	-
Mono-, di- and tri-phenyltin derivatives	Multiple	0.01	µg/L	N/A	n.d.( $<0.10 \mu\text{g/L}$ ) <sup>1</sup>	N/A	Not Detected	-
Monophenyltin (MPHT)	Multiple	0.01	µg/L	N/A	n.d.( $<0.10 \mu\text{g/L}$ ) <sup>1</sup>	N/A	Not Detected	-
Diphenyltin (DPHT)	Multiple	0.01	µg/L	N/A	n.d.( $<0.10 \mu\text{g/L}$ ) <sup>1</sup>	N/A	Not Detected	-
Triphenyltin (TPHT)	892-20-6, 668-34-8	0.01	µg/L	N/A	n.d.( $<0.10 \mu\text{g/L}$ ) <sup>1</sup>	N/A	Not Detected	-
Tetrabutyltin compounds (TeBT)	Multiple	0.01	µg/L	N/A	n.d.( $<0.10 \mu\text{g/L}$ ) <sup>1</sup>	N/A	Not Detected	-
Tripropyltin Compounds (TPPT)	Multiple	0.01	µg/L	N/A	n.d.( $<0.10 \mu\text{g/L}$ ) <sup>1</sup>	N/A	Not Detected	-
Tetraoctyltin compounds (TeOT)	Multiple	0.01	µg/L	N/A	n.d.( $<0.10 \mu\text{g/L}$ ) <sup>1</sup>	N/A	Not Detected	-
Tricyclohexyltin (TCyHT)	Multiple	0.01	µg/L	N/A	n.d.( $<0.10 \mu\text{g/L}$ ) <sup>1</sup>	N/A	Not Detected	-
Tetraethyltin Compounds (TeET)	Multiple	0.01	µg/L	N/A	n.d.( $<0.10 \mu\text{g/L}$ ) <sup>1</sup>	N/A	Not Detected	-
<b>Other/Miscellaneous Chemicals</b>								
AEEA [2-(2-aminoethylamino) ethanol]	111-41-1	500	µg/L	N/A	n.d.	N/A	Not Detected	-
Bisphenol A	80-05-7	10	µg/L	N/A	n.d.	N/A	Not Detected	-
Thiourea	62-56-6	50	µg/L	N/A	n.d.	N/A	Not Detected	-
Quinoline	91-22-5	50	µg/L	N/A	n.d.	N/A	Not Detected	-
Borate, zinc salt	12767-90-7	100	µg/L	N/A	See Total Zinc (Zn) & Total Boron (B) Results	N/A	Not Detected	-
<b>Perfluorinated and Polyfluorinated Chemicals (PFCs)</b>								
Perfluorooctane sulfonate (PFOS)****	1763-23-1	0.01	µg/L	N/A	n.d.	N/A	Not Detected	-
N-ethylperfluoro-1-octanesulfonamide (N-Et-FOSA)	4151-50-2	0.01	µg/L	N/A	n.d.	N/A	Not Detected	-
N-methylperfluoro-1-octanesulfonamide (N-Me-FOSA)	31506-32-8	0.01	µg/L	N/A	n.d.	N/A	Not Detected	-

TEST RESULTS

Factory Name: Hangzhou HangminDamei Dyeing Arrangements Co., Ltd.

Factory Address: Hangmin Industry Area, Guali Town, Xiaoshan District, Hangzhou City, Zhejiang Province

Items	CAS No.	Reporting Limit	Units	Sample ID		Date of Sampling		Factory Performances	Local Wastewater Discharged Requirement%
				52305265643401-01	52305265643401-02	08-04-2023	08-04-2023		
				Date of Sampling		Inlet collection tank	Raw wastewater collection tank		
				Sampling Location		14:30	9:10		
				Sampling Start Time		14:50	15:20		
				Sampling End Time		21-04-2023	21-04-2023		
Date of Sample Received				Incoming Water	Untreated Wastewater	Incoming Water	Untreated Wastewater	Effluent	
2-(N-ethylperfluoro-1-octanesulfonamido)-ethanol (N-Et-FOSE)	1691-99-2	0.01	µg/L	N/A	n.d.	N/A	Not Detected	-	
2-(N-methylperfluoro-1-octanesulfonamido)-ethanol (N-Me-FOSE)	24448-09-7	0.01	µg/L	N/A	n.d.	N/A	Not Detected	-	
Perfluorooctane sulfonamide (PFOSA)	754-91-6	0.01	µg/L	N/A	n.d.	N/A	Not Detected	-	
Perfluorooctanoic acid (PFOA)*****	335-67-1	0.01	µg/L	N/A	n.d.	N/A	Not Detected	-	
1H,1H,2H,2H-Perfluorodecanesulfonic acid (8:2 FTS)	39108-34-4	1	µg/L	N/A	n.d.	N/A	Not Detected	-	
Methyl Perfluorooctanoate (Me-PFOA)	376-27-2	1	µg/L	N/A	n.d.	N/A	Not Detected	-	
Ethyl Perfluorooctanoate (Et-PFOA)	3108-24-5	1	µg/L	N/A	n.d.	N/A	Not Detected	-	
1H,1H,2H,2H-Perfluoro-1-decanol (8:2 FTOH)	678-39-7	1	µg/L	N/A	n.d.	N/A	Not Detected	-	
1H,1H,2H,2H-Perfluorodecylacrylate (8:2 FTA)	27905-45-9	1	µg/L	N/A	n.d.	N/A	Not Detected	-	
8:2 Fluorotelomer methacrylate (8:2 FTMA)	1996-88-9	1	µg/L	N/A	n.d.	N/A	Not Detected	-	
<b>Phthalates - including all other esters of ortho-phthalic acid</b>									
1,2-benzenedicarboxylic acid, di-C6-8 branched and linear alkyl esters, C7-rich (DIHP)	71888-89-6, 84777-06-0	10	µg/L	N/A	n.d.	N/A	Not Detected	-	
1,2-benzenedicarboxylic acid, di-C7-11 branched and linear alkyl esters (DHNUP)	68515-42-4, 68515-50-4	10	µg/L	N/A	n.d.	N/A	Not Detected	-	
Bis(2-methoxyethyl) phthalate (DMEP)	117-82-8	10	µg/L	N/A	n.d.	N/A	Not Detected	-	
Butyl benzyl phthalate (BBP)	85-68-7	10	µg/L	N/A	n.d.	N/A	Not Detected	-	
Di-cyclohexyl phthalate (DCHP)	84-61-7	10	µg/L	N/A	n.d.	N/A	Not Detected	-	
Di-iso-decyl phthalate (DIDP)	26761-40-0	10	µg/L	N/A	n.d.	N/A	Not Detected	-	
Di-iso-octyl phthalate (DIOP)	27554-26-3	10	µg/L	N/A	n.d.	N/A	Not Detected	-	
Di-isobutyl phthalate (DIBP)	84-69-5	10	µg/L	N/A	n.d.	N/A	Not Detected	-	
Di-isononyl phthalate (DINP)	28553-12-0	10	µg/L	N/A	n.d.	N/A	Not Detected	-	
Di-n-hexyl phthalate (DnHP)	84-75-3	10	µg/L	N/A	n.d.	N/A	Not Detected	-	
Di-n-octyl phthalate (DNOP)	117-84-0	10	µg/L	N/A	n.d.	N/A	Not Detected	-	
Di-n-pentylphthalates	131-18-0	10	µg/L	N/A	n.d.	N/A	Not Detected	-	
Di-n-propyl phthalate (DPRP)	131-16-8	10	µg/L	N/A	n.d.	N/A	Not Detected	-	
Di(ethylhexyl) phthalate (DEHP)	117-81-7	10	µg/L	N/A	n.d.	N/A	Not Detected	-	
Dibutyl phthalate (DBP)	84-74-2	10	µg/L	N/A	n.d.	N/A	Not Detected	-	

TEST RESULTS

Factory Name: Hangzhou HangminDamei Dyeing Arrangements Co., Ltd.

Factory Address: Hangmin Industry Area, Guali Town, Xiaoshan District, Hangzhou City, Zhejiang Province

Items	CAS No.	Reporting Limit	Units	Sample ID		Factory Performances		Local Wastewater Discharged Requirement%	
				52305265643401-01	52305265643401-02				
				Date of Sampling	08-04-2023				08-04-2023
				Sampling Location	Inlet collection tank				Raw wastewater collection tank
				Sampling Start Time	14:30				9:10
				Sampling End Time	14:50				15:20
Date of Sample Received	21-04-2023	21-04-2023							
Items	CAS No.	Reporting Limit	Units	Incoming Water	Untreated Wastewater	Incoming Water	Untreated Wastewater	Effluent	
Diethyl phthalate (DEP)	84-66-2	10	µg/L	N/A	n.d.	N/A	Not Detected	-	
Diisopentylphthalates	605-50-5	10	µg/L	N/A	n.d.	N/A	Not Detected	-	
Dinonyl phthalate (DNP)	84-76-4	10	µg/L	N/A	n.d.	N/A	Not Detected	-	
<b>Polycyclic Aromatic Hydrocarbons (PAHs)</b>									
Acenaphthene	83-32-9	1	µg/L	N/A	n.d.	N/A	Not Detected	-	
Acenaphthylene	208-96-8	1	µg/L	N/A	n.d.	N/A	Not Detected	-	
Anthracene	120-12-7	1	µg/L	N/A	n.d.	N/A	Not Detected	-	
Benzo[a]anthracene	56-55-3	1	µg/L	N/A	n.d.	N/A	Not Detected	-	
Benzo[a]pyrene (BaP)	50-32-8	1	µg/L	N/A	n.d.	N/A	Not Detected	-	
Benzo[b]fluoranthene	205-99-2	1	µg/L	N/A	n.d.	N/A	Not Detected	-	
Benzo[e]pyrene	192-97-2	1	µg/L	N/A	n.d.	N/A	Not Detected	-	
Benzo[ghi]perylene	191-24-2	1	µg/L	N/A	n.d.	N/A	Not Detected	-	
Benzo[j]fluoranthene	205-82-3	1	µg/L	N/A	n.d.	N/A	Not Detected	-	
Benzo[k]fluoranthene	207-08-9	1	µg/L	N/A	n.d.	N/A	Not Detected	-	
Chrysene	218-01-9	1	µg/L	N/A	n.d.	N/A	Not Detected	-	
Dibenz[a,h]anthracene	53-70-3	1	µg/L	N/A	n.d.	N/A	Not Detected	-	
Fluoranthene	206-44-0	1	µg/L	N/A	n.d.	N/A	Not Detected	-	
Fluorene	86-73-7	1	µg/L	N/A	n.d.	N/A	Not Detected	-	
Indeno[1,2,3-cd]pyrene	193-39-5	1	µg/L	N/A	n.d.	N/A	Not Detected	-	
Naphthalene	91-20-3	1	µg/L	N/A	n.d.	N/A	Not Detected	-	
Phenanthrene	85-01-8	1	µg/L	N/A	n.d.	N/A	Not Detected	-	
Pyrene	129-00-0	1	µg/L	N/A	n.d.	N/A	Not Detected	-	
<b>Restricted Aromatic Amines (Cleavable from Azo-colourants)</b>									
2-naphthylamine	91-59-8	0.1	µg/L	N/A	n.d.	N/A	Not Detected	-	
2-Naphthylammoniumacetate <sup>+</sup>	553-00-4	0.1	µg/L	N/A	n.d.	N/A	Not Detected	-	
2,4-xylidine	95-68-1	0.1	µg/L	N/A	n.d.	N/A	Not Detected	-	
2,4,5-trimethylaniline	137-17-7	0.1	µg/L	N/A	n.d.	N/A	Not Detected	-	

TEST RESULTS

Factory Name: Hangzhou HangminDabei Dyeing Arrangements Co., Ltd.

Factory Address: Hangmin Industry Area, Guali Town, Xiaoshan District, Hangzhou City, Zhejiang Province

Items	CAS No.	Reporting Limit	Units	Sample ID		Factory Performances		Local Wastewater Discharged Requirement%
				52305265643401-01	52305265643401-02			
				Date of Sampling				
				Inlet collection tank				
				Raw wastewater collection tank				
				Date of Sample Received				
				Incoming Water	Untreated Wastewater	Incoming Water	Untreated Wastewater	Effluent
2,4,4-trimethylaniline hydrochloride <sup>^</sup>	21436-97-5	0.1	µg/L	N/A	n.d.	N/A	Not Detected	-
2,6-xylydine	87-62-7	0.1	µg/L	N/A	n.d.	N/A	Not Detected	-
3,3'-dichlorobenzidine	91-94-1	0.1	µg/L	N/A	n.d.	N/A	Not Detected	-
3,3-dimethoxybenzidine	119-90-4	0.1	µg/L	N/A	n.d.	N/A	Not Detected	-
3,3-dimethylbenzidine	119-93-7	0.1	µg/L	N/A	n.d.	N/A	Not Detected	-
4-aminoazobenzene	60-09-3	0.1	µg/L	N/A	n.d.	N/A	Not Detected	-
4-aminodiphenyl	92-67-1	0.1	µg/L	N/A	n.d.	N/A	Not Detected	-
4-chloro-o-toluidine	95-69-2	0.1	µg/L	N/A	n.d.	N/A	Not Detected	-
4-chloro-o-toluidinium chloride <sup>^</sup>	3165-93-3	0.1	µg/L	N/A	n.d.	N/A	Not Detected	-
4-chloroaniline	106-47-8	0.1	µg/L	N/A	n.d.	N/A	Not Detected	-
4-methoxy-m-phenylene diammonium sulphate; 2,4-diaminoanisole sulphate <sup>^</sup>	39156-41-7	0.1	µg/L	N/A	n.d.	N/A	Not Detected	-
4-methoxy-m-phenylenediamine	615-05-4	0.1	µg/L	N/A	n.d.	N/A	Not Detected	-
4-methyl-m-phenylenediamine	95-80-7	0.1	µg/L	N/A	n.d.	N/A	Not Detected	-
4,4-methylenebis-(2-chloro-aniline)	101-14-4	0.1	µg/L	N/A	n.d.	N/A	Not Detected	-
4,4-methylenedi-o-toluidine	838-88-0	0.1	µg/L	N/A	n.d.	N/A	Not Detected	-
4,4-methylenedianiline	101-77-9	0.1	µg/L	N/A	n.d.	N/A	Not Detected	-
4,4-oxydianiline	101-80-4	0.1	µg/L	N/A	n.d.	N/A	Not Detected	-
4,4-thiodianiline	139-65-1	0.1	µg/L	N/A	n.d.	N/A	Not Detected	-
5-nitro-o-toluidine	99-55-8	0.1	µg/L	N/A	n.d.	N/A	Not Detected	-
6-methoxy-m-toluidine	120-71-8	0.1	µg/L	N/A	n.d.	N/A	Not Detected	-
Benzidine	92-87-5	0.1	µg/L	N/A	n.d.	N/A	Not Detected	-
o-aminoazotoluene	97-56-3	0.1	µg/L	N/A	n.d.	N/A	Not Detected	-
o-anisidine	90-04-0	0.1	µg/L	N/A	n.d.	N/A	Not Detected	-
o-toluidine	95-53-4	0.1	µg/L	N/A	n.d.	N/A	Not Detected	-
<b>UV Absorbers</b>								
2-(2H-benzotriazol-2-yl)-4-(tert-butyl)-6-(sec-butyl) phenol (UV-350)	36437-37-3	100	µg/L	N/A	n.d.	N/A	Not Detected	-

TEST RESULTS

Factory Name: Hangzhou HangminDamei Dyeing Arrangements Co., Ltd.  
Factory Address: Hangmin Industry Area, Guali Town, Xiaoshan District, Hangzhou City, Zhejiang Province

	Sample ID		52305265643401-01	52305265643401-02	Factory Performances			Local Wastewater Discharged Requirement%
	Date of Sampling		08-04-2023	08-04-2023				
	Sampling Location		Inlet collection tank	Raw wastewater collection tank				
	Sampling Start Time		14:30	9:10				
	Sampling End Time		14:50	15:20				
	Date of Sample Received		21-04-2023	21-04-2023				
Items	CAS No.	Reporting Limit	Units	Incoming Water	Untreated Wastewater	Incoming Water	Untreated Wastewater	Effluent
2-(2H-benzotriazol-2-yl)-4,6-ditertbutylphenol (UV-328)	25973-55-1	100	µg/L	N/A	n.d.	N/A	Not Detected	-
2-benzotriazol-2-yl-4,6-di-tertbutylphenol (UV-320)	3846-71-7	100	µg/L	N/A	n.d.	N/A	Not Detected	-
2,4-Di-tert-butyl-6-(5-chlorobenzotriazole-2-yl)phenol (UV-327)	3864-99-1	100	µg/L	N/A	n.d.	N/A	Not Detected	-
<b>Volatile Organic Compounds (VOC)</b>								
Benzene	71-43-2	1	µg/L	N/A	n.d.	N/A	Not Detected	-
m-cresol	108-39-4	1	µg/L	N/A	n.d.	N/A	Not Detected	-
o-cresol	95-48-7	1	µg/L	N/A	n.d.	N/A	Not Detected	-
p-cresol	106-44-5	1	µg/L	N/A	n.d.	N/A	Not Detected	-
Xylene	1330-20-7	1	µg/L	N/A	n.d.	N/A	Not Detected	-
Toluene***	108-88-3	1	µg/L	N/A	n.d.	N/A	Not Detected	-

Remarks:

\*n.d.\* = Not Detected

\*N/A\* = Not Tested / Not Applicable

\*- = Not Required to be Test

^The test result is based on the calculation of selected element(s) and to the worst-case scenario

\*Test data is provided by the client

\*\*\*Sample and report only for mock leather

\*\*\*\*PFOS refer to its salts/derivative including PFOS-K (CAS No.: 2795-39-3), PFOS-Li (CAS No.: 29457-72-5), PFOS-NH<sub>4</sub> (CAS No.: 29081-56-9), PFOS-NH(OH)<sub>2</sub> (CAS No.: 70225-14-8), PFOS-N(C<sub>2</sub>H<sub>5</sub>)<sub>2</sub> (CAS No.: 56773-42-3) and POSF (CAS No.: 307-35-7)

\*\*\*\*\*PFOA refer to its salts including PFOA-Na (CAS No.: 335-95-5), PFOA-K (CAS No.: 2395-00-8), PFOA-Ag (CAS No.: 335-93-3), PFOA-F (CAS No.: 335-66-0) and APFO (CAS No.: 3825-26-1)

1) LOR values have been adjusted accordingly due to matrix interference

%Please refer to the details of the Local Wastewater Discharge Requirement in the Appendix Section

\*\*\*\*\*

TEST PARAMETERS

Factory Name: Hangzhou HangminDamei Dyeing Arrangements Co., Ltd.  
Factory Address: Hangmin Industry Area, Guali Town, Xiaoshan District, Hangzhou City, Zhejiang Province

ITEMS	CAS No.	METHODS	WASTEWATER			SLUDGE						LEACHATE						
			Foundational	Progressive	Aspirational	Pathway A	Pathway B	Pathway C	Pathway D	Pathway E	Pathway F	Pathway G	Pathway A	Pathway B	Pathway C	Pathway D	Pathway E	Pathway F
<b>Conventional Parameters</b>																		
pH	-	Wastewater: ISO 10523, USEPA 150.1, SM 4500 H <sup>+</sup> , HJ 1147 or IS 3025 (Part 11) - Electrometric method only Sludge: USEPA 9045 D or HJ 962	6-9	Sample and Report Only	Sample and Report Only	5-11	5-11	5-11	6.5-9	6.5-9								
Temperature	-	DIN 38 404-4, USEPA 170.1, SM 2550, GB/T 13195 or IS 3025 (Part 9)	Δ+15°C Δ+10°C Δ+5°C												-			
E. Coli	-	SM 9221 B presumptive, confirm positive with SM 9221 F or G	126cfu/100mL												-			
Colour (436nm; 525nm; 620nm)	-	ISO 7887 B	7.5;3m <sup>-1</sup> 5;3;2m <sup>-1</sup> 2;1;1m <sup>-1</sup>												-			
Persistent Foam	-	-	No indication of Persistent Foam in receiving water												-			
Wastewater Flowrate	-	-	15m <sup>3</sup> per day												-			
Ammonium-N	-	ISO 7150, ISO 11732, USEPA 350.1, USEPA 350.3, SM 4500 NH <sub>3</sub> D, E, F, G or H, HJ 535 or IS 3025 (Part 34) - Phenate or ammonia selective electrode only	10mg/L 1mg/L 0.5mg/L												-			
AOX	-	ISO 9562, HACH LCK 390 or HJ/T 83-2001	3mg/L 0.5mg/L 0.1mg/L												-			
5-Days Biochemical Oxygen Demand (BOD <sub>5</sub> )	-	ISO 5815-1, USEPA 405.1, SM 5210 B, HJ 505 or IS 3025 (Part 44) - Seeded dilution water (BOD <sub>5</sub> )	30mg/L 15mg/L 8mg/L												-			
Chemical Oxygen Demand (COD)	-	ISO 6060, ISO 15705, USEPA 410.4, SM 5220 D, HJ 828, GB/T 11914 or IS 3025 (Part 58)	150mg/L 80mg/L 40mg/L												-			
Dissolved Oxygen (DO)	-	ISO 5814, USEPA 360.1, SM 4500 O G or HJ 506	Sample and Report Only												-			
Oil & Grease	-	ISO 9377-2, USEPA 1664 Revision B, SM 5520 B or C, HJ 637 - Total oil and grease or IS 3025 (Part 39) - Partition gravimetric or partition infra-red	10mg/L 2mg/L 0.5mg/L												-			
Total Phenols / Phenol Index	-	ISO 6439, SM 5530 B or C, HJ 503 or IS 3025 (Part 43)	0.5mg/L 0.01mg/L 0.001mg/L												-			
Total Chlorine	-	ISO 7393-2, USEPA 330.5, SM 4500 Cl <sup>-</sup> G or HJ 586	Sample and Report Only												-			
Total Dissolved Solids (TDS)	-	USEPA 160.1, SM 2540 C, GB/T 5750.4-2006 (180°C centigrade) or IS 3025 (Part 16) 179°C to 181°C	Sample and Report Only												-			
Total Nitrogen	-	ISO 11905 - Part 1, ISO 29441, USEPA 351.2, SM 4500 P J, SM 4500 N B, C, HJ 636 or IS 3025 (Part 34) (Ammonia, nitrate, nitrite, organic)	20mg/L 10mg/L 5mg/L												-			
Total Phosphorus	-	ISO 6878, ISO 11885, ISO 17294, USEPA 200.7, USEPA 200.8, USEPA 365.4, USEPA 6010 C, USEPA 6020 A, SM 4500 P J, GB/T 11893, IS 3025 (Part 31) or IS 3025 (Part 65)	3mg/L 0.5mg/L 0.1mg/L												-			
Total Suspended Solids (TSS)	-	ISO 11923, USEPA 160.2, SM 2540 D, GB/T 11901 or IS 3025 (Part 17) 103°C to 105°C	50mg/L 15mg/L 5mg/L												-			
% Solids	-	USEPA 160.3 or HJ 613 at 105°C	-	Sample and Report Only	Sample and Report Only	Sample and Report Only	Sample and Report Only	Sample and Report Only	Sample and Report Only	Sample and Report Only	Sample and Report Only	Sample and Report Only	Sample and Report Only	Sample and Report Only	Sample and Report Only	Sample and Report Only	Sample and Report Only	Sample and Report Only
Paint Filter Test	-	USEPA SW-846 or USEPA 9095 B	-	Sample and Report Only	Sample and Report Only	Sample and Report Only	Pass	Pass	Pass	Sample and Report Only								
Fecal Coliform	-	USEPA 1681	-	Sample and Report Only	Sample and Report Only	Sample and Report Only	Sample and Report Only	Sample and Report Only	Sample and Report Only	1000MPN/g	1000MPN/g							
<b>Anions</b>																		
Chloride	-	ISO 10304-1, ISO 15923-1, USEPA 300, SM 4110 B, C, SM 4500 Cl <sup>-</sup> D or E, HJ 84-2016 or IS 3025 (Part 32) - Potentiometric or automated ferricyanide only	Sample and Report Only												-			
Cyanide	-	Wastewater: ISO 6703-1, -2, -3, ISO 14403-1, -2, USEPA 335.2, SM 4500 CN or HJ 484 Sludge: Preparation: USEPA 9013 Analysis: USEPA 9014, USEPA 9213 or HJ 745	0.2mg/L 0.1mg/L 0.05mg/L	Sample and Report Only	Sample and Report Only	100mg/kg	85mg/kg	70mg/kg	70mg/kg	70mg/kg								
Sulfate	-	ISO 10304-1, ISO 15923-1, USEPA 300, USEPA 9038, SM 4110 B, C, SM 4500 SO <sub>4</sub> <sup>2-</sup> E, F, G, HJ 84-2016 or IS 3025 (Part 24)	Sample and Report Only												-			
Sulfide	-	ISO 10530, SM 4500 S <sup>2-</sup> D, E, G or I, HJ 1226 or IS 3025 (Part 29) - Methylene blue only	0.5mg/L 0.05mg/L 0.01mg/L												-			
Sulfite	-	ISO 10304-3, SM 4500 SO <sub>3</sub> <sup>2-</sup> C or HJ 84-2016	2mg/L 0.5mg/L 0.2mg/L												-			

TEST PARAMETERS

Factory Name: Hangzhou HangminDamei Dyeing Arrangements Co., Ltd.  
Factory Address: Hangmin Industry Area, Guali Town, Xiaoshan District, Hangzhou City, Zhejiang Province

ITEMS	CAS No.	METHODS	WASTEWATER			SLUDGE						LEACHATE								
			Foundational	Progressive	Aspirational	Pathway A	Pathway B	Pathway C	Pathway D	Pathway E	Pathway F	Pathway G	Pathway A	Pathway B	Pathway C	Pathway D	Pathway E	Pathway F	Pathway G	
<b>Metals</b>																				
Total Antimony (Sb)	7440-36-0	<u>Wastewater:</u> ISO 17294, USEPA 200.8, USEPA 6010 C, USEPA 6020 A, HJ 700 or IS 3025 (Part 65) <u>Sludge:</u> Preparation: USEPA 3050 Analysis: USEPA 6010 D, USEPA 6020 B or HJ 803 <u>Leachate:</u> Leachate Extraction: USEPA 1311 or USEPA 3051 A Analysis: ISO 11885, ISO 17294-2, USEPA 200.7, USEPA 200.8, USEPA 6010 C or USEPA 6020 A <u>Wastewater:</u> ISO 18412, USEPA 218.6, GB 7467 or IS 3025 (Part 52)	0.1mg/L	0.05mg/L	0.01mg/L	-	-	-	-	-	-	-	Sample and Report Only	Sample and Report Only	Sample and Report Only	15mg/L	7.8mg/L	0.6mg/L	0.6mg/L	0.6mg/L
Chromium (VI)	7440-47-3, 18540-29-9	<u>Wastewater:</u> Preparation: USEPA 3060 A Analysis: USEPA 7196 or USEPA 7199 <u>Sludge:</u> Preparation: USEPA 3050 Analysis: USEPA 6010 D or USEPA 6020 B <u>Leachate:</u> Leachate Extraction: USEPA 1311 Analysis: ISO 18412, USEPA 7196 or USEPA 7199 <u>Wastewater:</u> USEPA 200.8, USEPA 6010 C, USEPA 6020 A or HJ 700	0.05mg/L	0.005mg/L	0.001mg/L	-	-	-	-	-	-	50mg/kg	Sample and Report Only	Sample and Report Only	5mg/L	3.75mg/L	2.5mg/L	2.5mg/L	2.5mg/L	
Total Barium (Ba)	7440-39-3	<u>Wastewater:</u> Preparation: USEPA 3050 Analysis: USEPA 6010 D or USEPA 6020 B <u>Sludge:</u> Leachate Extraction: USEPA 1311 or USEPA 3051 A Analysis: ISO 11885, ISO 17294-2, USEPA 200.7, USEPA 200.8, USEPA 6010 C or USEPA 6020 A <u>Wastewater:</u> USEPA 200.8, USEPA 6010 C, USEPA 6020 A or HJ 700	Sample and Report Only			-	-	-	-	-	-	Sample and Report Only	Sample and Report Only	100mg/L	67.5mg/L	35mg/L	35mg/L	35mg/L		
Total Selenium (Se)	7782-49-2	<u>Wastewater:</u> Preparation: USEPA 3050 Analysis: USEPA 6010 D or USEPA 6020 B <u>Sludge:</u> Leachate Extraction: USEPA 1311 or USEPA 3051 A Analysis: ISO 11885, ISO 17294-2, USEPA 200.7, USEPA 200.8, USEPA 6010 C or USEPA 6020 A <u>Wastewater:</u> USEPA 200.8, USEPA 6010 C, USEPA 6020 A or HJ 700	Sample and Report Only			-	-	-	-	-	-	100mg/kg	Sample and Report Only	Sample and Report Only	1mg/L	0.75mg/L	0.5mg/L	0.5mg/L	0.5mg/L	
Total Tin (Sn)	7440-31-5	<u>Wastewater:</u> ISO 17294, USEPA 200.8, USEPA 6010 C, USEPA 6020 A, HJ 700 or IS 3025 (Part 65) <u>Sludge:</u> Preparation: USEPA 3050 Analysis: USEPA 6010 D, USEPA 6020 B or HJ 803 <u>Leachate:</u> Leachate Extraction: USEPA 1311 or USEPA 3051 A Analysis: ISO 11885, ISO 17294-2, USEPA 200.7, USEPA 200.8, USEPA 6010 C or USEPA 6020 A <u>Wastewater:</u> ISO 17294, USEPA 200.8, USEPA 6010 C, USEPA 6020 A, HJ 700 or IS 3025 (Part 65)	Sample and Report Only			-	-	-	-	-	-				-					
Total Arsenic (As)	7440-38-2	<u>Wastewater:</u> Preparation: USEPA 3050 Analysis: USEPA 6010 D, USEPA 6020 B or HJ 803 <u>Sludge:</u> Leachate Extraction: USEPA 1311 or USEPA 3051 A Analysis: ISO 11885, ISO 17294-2, USEPA 200.7, USEPA 200.8, USEPA 6010 C or USEPA 6020 A <u>Wastewater:</u> ISO 17294, USEPA 200.8, USEPA 6010 C, USEPA 6020 A, HJ 700 or IS 3025 (Part 65)	0.05mg/L	0.01mg/L	0.005mg/L	-	-	-	-	-	-	75mg/kg	Sample and Report Only	Sample and Report Only	5mg/L	2.75mg/L	0.5mg/L	0.5mg/L	0.5mg/L	
Total Chromium (Cr)	7440-47-3	<u>Wastewater:</u> Preparation: USEPA 3050 Analysis: USEPA 6010 D, USEPA 6020 B or HJ 803 <u>Sludge:</u> Leachate Extraction: USEPA 1311 or USEPA 3051 A Analysis: ISO 11885, ISO 17294-2, USEPA 200.7, USEPA 200.8, USEPA 6010 C or USEPA 6020 A <u>Wastewater:</u> ISO 17294, USEPA 200.8, USEPA 6010 C, USEPA 6020 A, HJ 700 or IS 3025 (Part 65)	0.2mg/L	0.1mg/L	0.05mg/L	-	-	-	-	-	-	3000mg/kg	Sample and Report Only	Sample and Report Only	15mg/L	10mg/L	5mg/L	5mg/L	5mg/L	
Total Cobalt (Co)	7440-48-4	<u>Wastewater:</u> Preparation: USEPA 3050 Analysis: USEPA 6010 D, USEPA 6020 B or HJ 803 <u>Sludge:</u> Leachate Extraction: USEPA 1311 or USEPA 3051 A Analysis: ISO 11885, ISO 17294-2, USEPA 200.7, USEPA 200.8, USEPA 6010 C or USEPA 6020 A <u>Wastewater:</u> ISO 17294, USEPA 200.8, USEPA 6010 C, USEPA 6020 A, HJ 700 or IS 3025 (Part 65)	0.05mg/L	0.02mg/L	0.01mg/L	-	-	-	-	-	-	Sample and Report Only	Sample and Report Only	Sample and Report Only	80mg/L	80mg/L	80mg/L	80mg/L	80mg/L	
Total Cadmium (Cd)	7440-43-9	<u>Wastewater:</u> Preparation: USEPA 3050 Analysis: USEPA 6010 D, USEPA 6020 B or HJ 803 <u>Sludge:</u> Leachate Extraction: USEPA 1311 or USEPA 3051 A Analysis: ISO 11885, ISO 17294-2, USEPA 200.7, USEPA 200.8, USEPA 6010 C or USEPA 6020 A <u>Wastewater:</u> ISO 17294, USEPA 200.8, USEPA 6010 C, USEPA 6020 A, GB 7475, HJ 700, IS 3025 (Part 65) or IS 3025 (Part 41) - AAS instrumental method <u>Sludge:</u> Preparation: USEPA 3050 Analysis: USEPA 6010 D, USEPA 6020 B or HJ 803 <u>Leachate:</u> Leachate Extraction: USEPA 1311 or USEPA 3051 A Analysis: ISO 11885, ISO 17294-2, USEPA 200.7, USEPA 200.8, USEPA 6010 C or USEPA 6020 A <u>Wastewater:</u> ISO 17294, USEPA 200.8, USEPA 6010 C, USEPA 6020 A, GB 7475, HJ 700, IS 3025 (Part 65) or IS 3025 (Part 42) - AAS instrumental method <u>Sludge:</u> Preparation: USEPA 3050 Analysis: USEPA 6010 D, USEPA 6020 B or HJ 803 <u>Leachate:</u> Leachate Extraction: USEPA 1311 or USEPA 3051 A Analysis: ISO 11885, ISO 17294-2, USEPA 200.7, USEPA 200.8, USEPA 6010 C or USEPA 6020 A	0.1mg/L	0.05mg/L	0.01mg/L	-	-	-	-	-	-	-	85mg/kg	Sample and Report Only	Sample and Report Only	1mg/L	0.58mg/L	0.15mg/L	0.15mg/L	0.15mg/L
Total Copper (Cu)	7440-50-8	<u>Wastewater:</u> Preparation: USEPA 3050 Analysis: USEPA 6010 D, USEPA 6020 B or HJ 803 <u>Sludge:</u> Leachate Extraction: USEPA 1311 or USEPA 3051 A Analysis: ISO 11885, ISO 17294-2, USEPA 200.7, USEPA 200.8, USEPA 6010 C or USEPA 6020 A <u>Wastewater:</u> ISO 17294, USEPA 200.8, USEPA 6010 C, USEPA 6020 A, GB 7475, HJ 700, IS 3025 (Part 65) or IS 3025 (Part 42) - AAS instrumental method <u>Sludge:</u> Preparation: USEPA 3050 Analysis: USEPA 6010 D, USEPA 6020 B or HJ 803 <u>Leachate:</u> Leachate Extraction: USEPA 1311 or USEPA 3051 A Analysis: ISO 11885, ISO 17294-2, USEPA 200.7, USEPA 200.8, USEPA 6010 C or USEPA 6020 A	1mg/L	0.5mg/L	0.25mg/L	-	-	-	-	-	-	4300mg/kg	Sample and Report Only	Sample and Report Only	25mg/L	17.5mg/L	10mg/L	10mg/L	10mg/L	







TEST PARAMETERS

Factory Name: Hangzhou HangminDamei Dyeing Arrangements Co., Ltd.  
Factory Address: Hangmin Industry Area, Guali Town, Xiaoshan District, Hangzhou City, Zhejiang Province

ITEMS	CAS No.	METHODS	WASTEWATER			SLUDGE							LEACHATE						
			Foundational	Progressive	Aspirational	Pathway A	Pathway B	Pathway C	Pathway D	Pathway E	Pathway F	Pathway G	Pathway A	Pathway B	Pathway C	Pathway D	Pathway E	Pathway F	Pathway G
Polycyclic Aromatic Hydrocarbons (PAHs)		<u>Wastewater:</u> With reference to DIN 38407-39, USEPA 8270 E or Solvent extraction followed by GC-MS <u>Sludge:</u> Preparation: With reference to USEPA 3540 / 3541 - Soxhlet or USEPA 3550 - Ultrasonic Clean-up: With reference to USEPA 3640 Analysis: With reference to USEPA 8270 E or HJ 805-2016	1µg/L			Sample and Report Only	Sample and Report Only	Sample and Report Only	0.2mg/kg	0.2mg/kg	0.2mg/kg	0.2mg/kg							
Restricted Aromatic Amines (Cleavable from Azo-colourants)		With reference to USEPA 8270 E or Reduction step with sodium dithionite, solvent extraction followed by GC-MS and LC-MS/MS	0.1µg/L						-										-
UV Absorbers		With reference to ISO 22032, USEPA 527, USEPA 8270 E, USEPA 8321 B or Dichloromethane extraction followed by GC-MS or LC-MS(-MS)	100µg/L						-										-
<b>Volatile Organic Compounds (VOCs)</b>																			
Benzene	71-43-2	With reference to ISO 11423-1, ISO 20595, USEPA 8260 D, Purge and Trap or Static Headspace followed by GC-MS	1µg/L						-										-
m-cresol / o-cresol / p-cresol	108-39-4 / 94-48-7 / 106-44-5	With reference to BS EN 12637-1999, ISO 11423-1, USEPA 8270 E, Purge and Trap or Headspace followed by GC-MS	1µg/L						-										-
Xylene	1330-20-7	With reference to ISO 11423-1, USEPA 8260 D, Purge and Trap or Headspace followed by GC-MS	1µg/L						-										-
Toluene	108-88-3	With reference to ISO 11423-1, USEPA 8260 D or HJ 1067	1µg/L						-										-

\*\*\*\*\*

### PIPING PLAN

Factory Name: Hangzhou HangminDamei Dyeing Arrangements Co., Ltd.  
Factory Address: Hangmin Industry Area, Guali Town, Xiaoshan District, Hangzhou City, Zhejiang Province

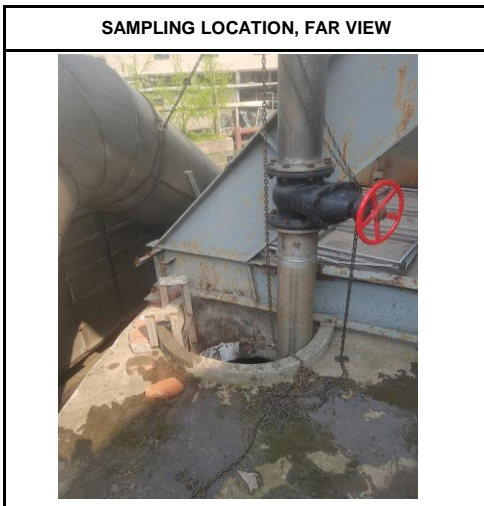
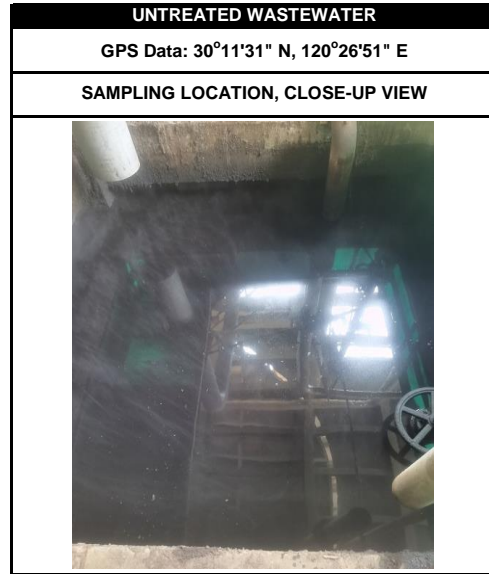
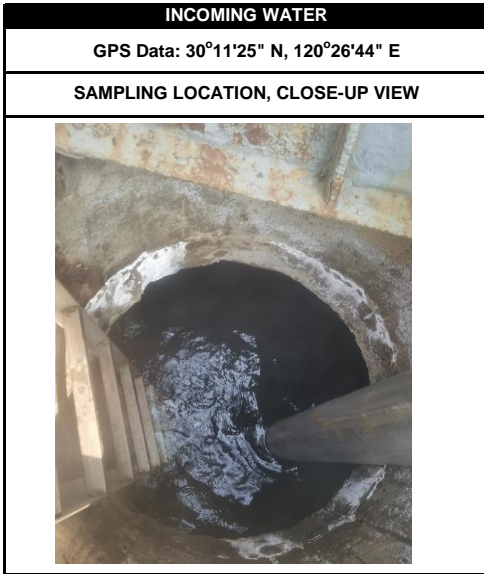


Remark:  
1) Incoming Water  
2) Untreated Wastewater

\*\*\*\*\*

### SAMPLING PHOTOS

Factory Name: Hangzhou HangminDamei Dyeing Arrangements Co., Ltd.  
Factory Address: Hangmin Industry Area, Guali Town, Xiaoshan District, Hangzhou City, Zhejiang Province



\*\*\*\*\* END OF REPORT \*\*\*\*\*