

TEST REPORT

CLIENT DETAILS

Client Name: Jiangsu Lianfa Textile Co., Ltd.
Client Contact: Yi Gu
Telephone: 15151304636
E-mail: guy@gl.lianfa.cn
Address: No.88 Henglian Road, Chengdong Town, Hai'an City, Jiangsu Province

LABORATORY DETAILS

SGS Affiliate: SGS-CSTC Standards Technical Services (Shanghai) Co., Ltd
SGS Contact: Lily Li
Telephone: +86(021) 61072854
E-mail: Lily-li@sgs.com
Address: The 4th Building, No.889, Yishan Road, Xuhui District, Shanghai, China

FACTORY DETAILS

Factory Name: Jiangsu Lianfa Textile Co., Ltd.
Factory Contact: Yi Gu
Telephone: 15151304636
E-mail: guy@gl.lianfa.cn
Address: No.88 Henglian Road, Chengdong Town, Hai'an City, Jiangsu Province
Types of Mills: (1) Spinning (2) Yarn Dyeing, Bleaching
 (3) Fabric Dyeing, Finishing, Washing
On-Site ETP: No
Discharge Destination: To Centralized Waste Water Treatment Plant
Name of Municipal/Centralized ETP: Lianfa Environmental Protection New Energy Co., Ltd.
Address of Municipal/Centralized ETP: No. 88 Henglian Road, Chengdong Town, Hai'an City, Jiangsu Province

SAMPLE AND TESTING DETAILS

Sampling Country: SGS China SL
ZDHC Sampler's Certification No.: C74D106818054
Sampling Date: 10-09-2024
Sample Received Date: 11-09-2024
Test Performing Period: 11-09-2024 to 08-10-2024
Sample Received Temperature: 7.1°C
No. of Samples: Water (2)
Sample Descriptions: 1) Untreated Wastewater (Dyeing)(6-hour Composite)
 2) Untreated Wastewater (Finishing)(6-hour Composite)
Sample Volume: 1) Untreated Wastewater (Dyeing)(16L)
 2) Untreated Wastewater (Finishing)(16L)
Testing Institute: SGS China SL
Discharge Method: Indirect Discharge

OVERALL RESULTS

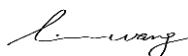
	Untreated Wastewater (Dyeing)	Untreated Wastewater (Finishing)
Conventional Parameters / Anions / Metals:	Fulfill Aspirational Limit	Fulfill Aspirational Limit
MRSL Parameters:	Not Detected	Not Detected

REMARKS

- This test document cannot be reproduced in any way, except in full content, without prior approval in writing by the laboratory.
- The results shown in this test report refer only to the sampling and the sample(s) tested unless otherwise stated.

Signed for and on behalf of

SGS-CSTC Standards Technical Services (Shanghai) Co., Ltd



Linda Wang
 Chemical Manager

RESULT SUMMARY

Factory Name: Jiangsu Lianfa Textile Co., Ltd.
Factory Address: No.88 Henglian Road, Chengdong Town, Hai'an City, Jiangsu Province

TEST ITEMS	Untreated Wastewater (Dyeing)	Untreated Wastewater (Finishing)
Conventional Parameters	-	-
Anions	-	-
Metals	O	O
Alkylphenol (AP) & Alkylphenol Ethoxylates (APEOs)	O	O
Anti-Microbials & Biocides	O	O
Chlorinated Paraffins	O	O
Chlorobenzenes and Chlorotoluenes	O	O
Chlorophenols	O	O
Dimethyl Formamide (DMFa)	O	O
Dyes - Carcinogenic or Equivalent Concern	O	O
Dyes - Disperse (Allergenic)	O	O
Dyes - Navy Blue Colourant	O	O
Flame Retardants	O	O
Glycols / Glycol Ethers	O	O
Halogenated Solvents	O	O
Organotin Compounds	O	O
Other / Miscellaneous Chemicals	O	O
Perfluorinated and Polyfluorinated Chemicals (PFCs)	O	O
Phthalates	O	O
Polycyclic Aromatic Hydrocarbons (PAHs)	O	O
Restricted Aromatic Amines	O	O
UV Absorbers	O	O
Volatile Organic Compounds (VOCs)	O	O

Note:

X - Detected

O - Not Detected

N/A - Not Tested / Not Applicable

TEST RESULTS

Factory Name: Jiangsu Lianfa Textile Co., Ltd.
Factory Address: No.88 Henglian Road, Chengdong Town, Hai'an City, Jiangsu Province

Items	CAS No.	Reporting Limit	Units	Sample ID		Date of Sampling		Factory Performances	Local Wastewater Discharged Requirement%
				52415339635001-01	52415339635001-02	10-09-2024	10-09-2024		
				Raw wastewater collection tank	Raw wastewater collection tank				
				11:00	11:20				
				17:10	17:30				
				11-09-2024	11-09-2024				
Untreated Wastewater (Dyeing)	Untreated Wastewater (Finishing)	Untreated Wastewater (Dyeing)	Untreated Wastewater (Finishing)	Effluent					
Sample Colour Description	-	-	-	Purple	Colourless	-	-	-	
Wastewater Flowrate*	-	-	m ³ /day	5000		-	-	-	
Metals									
Chromium (VI)	7440-47-3, 18540-29-9	0.001	mg/L	n.d.	n.d.	Fulfill Aspirational Limit	Fulfill Aspirational Limit	N/A	
Total Arsenic (As)	7440-38-2	0.005	mg/L	n.d.	n.d.	Fulfill Aspirational Limit	Fulfill Aspirational Limit	N/A	
Total Cadmium (Cd)	7440-43-9	0.01	mg/L	n.d.	n.d.	Fulfill Aspirational Limit	Fulfill Aspirational Limit	N/A	
Total Lead (Pb)	7439-92-1	0.01	mg/L	n.d.	n.d.	Fulfill Aspirational Limit	Fulfill Aspirational Limit	N/A	
Total Zinc (Zn)	7440-66-6	0.1	mg/L	n.d.	n.d.	Not Detected	Not Detected	N/A	
Total Mercury (Hg)	7439-97-6	0.001	mg/L	n.d.	n.d.	Fulfill Aspirational Limit	Fulfill Aspirational Limit	N/A	
Total Boron (B)	7440-42-8	0.1	mg/L	n.d.	n.d.	Not Detected	Not Detected	N/A	
Alkylphenol (AP) and Alkylphenol Ethoxylates (APEOs): including all isomers									
Nonylphenol ethoxylates (NPEO)	9016-45-9, 26027-38-3, 37205-87-1, 68412-54-4, 127087-87-0, 104-40-5, 11066-49-2, 25154-52-3, 84852-15-3	5	µg/L	n.d.	n.d.	Not Detected	Not Detected	-	
Nonylphenol (NP), mixed isomers	9002-93-1, 9036-19-5, 68987-90-6	5	µg/L	n.d.	n.d.	Not Detected	Not Detected	-	
Octylphenol ethoxylates (OPEO)	140-66-9, 1806-26-4, 27193-28-8	5	µg/L	n.d.	n.d.	Not Detected	Not Detected	-	
Octylphenol (OP), mixed isomers									
Anti-Microbials & Biocides									
o-Phenylphenol (+salts)	90-43-7	100	µg/L	n.d.	n.d.	Not Detected	Not Detected	-	
Triclosan	3380-34-5	100	µg/L	n.d.	n.d.	Not Detected	Not Detected	-	
Permethrin	Multiple	500	µg/L	n.d.	n.d.	Not Detected	Not Detected	-	
Chlorinated Paraffins									
Medium-chain Chlorinated Paraffins (MCCPs) (C14-C17)	85535-85-9	500	µg/L	n.d.	n.d.	Not Detected	Not Detected	-	
Short-chain Chlorinated Paraffin (SCCPs) (C10-C13)	85535-84-8	25	µg/L	n.d.	n.d.	Not Detected	Not Detected	-	
Chlorobenzenes and Chlorotoluenes									
Monochlorobenzenes	108-90-7	0.2	µg/L	n.d.	n.d.	Not Detected	Not Detected	-	
1,2-Dichlorobenzene	95-50-1	0.2	µg/L	n.d.	n.d.	Not Detected	Not Detected	-	
1,3-Dichlorobenzene	541-73-1	0.2	µg/L	n.d.	n.d.	Not Detected	Not Detected	-	
1,4-Dichlorobenzene	106-46-7	0.2	µg/L	n.d.	n.d.	Not Detected	Not Detected	-	
1,2,3-Trichlorobenzene	87-61-6	0.2	µg/L	n.d.	n.d.	Not Detected	Not Detected	-	
1,2,4-Trichlorobenzene	120-82-1	0.2	µg/L	n.d.	n.d.	Not Detected	Not Detected	-	
1,3,5-Trichlorobenzene	108-70-3	0.2	µg/L	n.d.	n.d.	Not Detected	Not Detected	-	
1,2,3,4-Tetrachlorobenzene	634-66-2	0.2	µg/L	n.d.	n.d.	Not Detected	Not Detected	-	

TEST RESULTS

Factory Name: Jiangsu Lianfa Textile Co., Ltd.
Factory Address: No.88 Henglian Road, Chengdong Town, Hai'an City, Jiangsu Province

Sample ID	52415339635001-01	52415339635001-02	Factory Performances	Local Wastewater Discharged Requirement%
Date of Sampling	10-09-2024	10-09-2024		
Sampling Location	Raw wastewater collection tank	Raw wastewater collection tank		
Sampling Start Time	11:00	11:20		
Sampling End Time	17:10	17:30		
Date of Sample Received	11-09-2024	11-09-2024		

Items	CAS No.	Reporting Limit	Units	Untreated Wastewater (Dyeing)	Untreated Wastewater (Finishing)	Untreated Wastewater (Dyeing)	Untreated Wastewater (Finishing)	Effluent
1,2,3,5-Tetrachlorobenzene	634-90-2	0.2	µg/L	n.d.	n.d.	Not Detected	Not Detected	-
1,2,4,5-Tetrachlorobenzene	95-94-3	0.2	µg/L	n.d.	n.d.	Not Detected	Not Detected	-
Pentachlorobenzene	608-93-5	0.2	µg/L	n.d.	n.d.	Not Detected	Not Detected	-
Hexachlorobenzene	118-74-1	0.2	µg/L	n.d.	n.d.	Not Detected	Not Detected	-
2-Chlorotoluene	95-49-8	0.2	µg/L	n.d.	n.d.	Not Detected	Not Detected	-
3-Chlorotoluene	108-41-8	0.2	µg/L	n.d.	n.d.	Not Detected	Not Detected	-
4-Chlorotoluene	106-43-4	0.2	µg/L	n.d.	n.d.	Not Detected	Not Detected	-
2,3-Dichlorotoluene	32768-54-0	0.2	µg/L	n.d.	n.d.	Not Detected	Not Detected	-
2,4-Dichlorotoluene	95-73-8	0.2	µg/L	n.d.	n.d.	Not Detected	Not Detected	-
2,5-Dichlorotoluene	19398-61-9	0.2	µg/L	n.d.	n.d.	Not Detected	Not Detected	-
2,6-Dichlorotoluene	118-69-4	0.2	µg/L	n.d.	n.d.	Not Detected	Not Detected	-
3,4-Dichlorotoluene	95-75-0	0.2	µg/L	n.d.	n.d.	Not Detected	Not Detected	-
3,5-Dichlorotoluene	25186-47-4	0.2	µg/L	n.d.	n.d.	Not Detected	Not Detected	-
2,3,4-Trichlorotoluene	7359-72-0	0.2	µg/L	n.d.	n.d.	Not Detected	Not Detected	-
2,3,6-Trichlorotoluene	2077-46-5	0.2	µg/L	n.d.	n.d.	Not Detected	Not Detected	-
2,4,5-Trichlorotoluene	6639-30-1	0.2	µg/L	n.d.	n.d.	Not Detected	Not Detected	-
2,4,6-Trichlorotoluene	23749-65-7	0.2	µg/L	n.d.	n.d.	Not Detected	Not Detected	-
3,4,5-Trichlorotoluene	21472-86-6	0.2	µg/L	n.d.	n.d.	Not Detected	Not Detected	-
2,3,4,5-Tetrachlorotoluene	76057-12-0	0.2	µg/L	n.d.	n.d.	Not Detected	Not Detected	-
2,3,5,6-Tetrachlorotoluene	29733-70-8	0.2	µg/L	n.d.	n.d.	Not Detected	Not Detected	-
2,3,4,6-Tetrachlorotoluene	875-40-1	0.2	µg/L	n.d.	n.d.	Not Detected	Not Detected	-
Pentachlorotoluene	877-11-2	0.2	µg/L	n.d.	n.d.	Not Detected	Not Detected	-
Chlorophenols								
2-Chlorophenol	95-57-8	0.5	µg/L	n.d.	n.d.	Not Detected	Not Detected	-
3-Chlorophenol	108-43-0	0.5	µg/L	n.d.	n.d.	Not Detected	Not Detected	-
4-Chlorophenol	106-48-9	0.5	µg/L	n.d.	n.d.	Not Detected	Not Detected	-
2,3-Dichlorophenol	576-24-9	0.5	µg/L	n.d.	n.d.	Not Detected	Not Detected	-
2,4-Dichlorophenol	120-83-2	0.5	µg/L	n.d.	n.d.	Not Detected	Not Detected	-
2,5-Dichlorophenol	583-78-8	0.5	µg/L	n.d.	n.d.	Not Detected	Not Detected	-

TEST RESULTS

Factory Name: Jiangsu Lianfa Textile Co., Ltd.
Factory Address: No.88 Henglian Road, Chengdong Town, Hai'an City, Jiangsu Province

Sample ID	52415339635001-01	52415339635001-02
Date of Sampling	10-09-2024	10-09-2024
Sampling Location	Raw wastewater collection tank	Raw wastewater collection tank
Sampling Start Time	11:00	11:20
Sampling End Time	17:10	17:30
Date of Sample Received	11-09-2024	11-09-2024

Items	CAS No.	Reporting Limit	Units	Factory Performances		Factory Performances		Local Wastewater Discharged Requirement%
				Untreated Wastewater (Dyeing)	Untreated Wastewater (Finishing)	Untreated Wastewater (Dyeing)	Untreated Wastewater (Finishing)	
2,6-Dichlorophenol	87-65-0	0.5	µg/L	n.d.	n.d.	Not Detected	Not Detected	-
3,4-Dichlorophenol	95-77-2	0.5	µg/L	n.d.	n.d.	Not Detected	Not Detected	-
3,5-Dichlorophenol	591-35-5	0.5	µg/L	n.d.	n.d.	Not Detected	Not Detected	-
2,3,4-Trichlorophenol	15950-66-0	0.5	µg/L	n.d.	n.d.	Not Detected	Not Detected	-
2,3,5-Trichlorophenol	933-78-8	0.5	µg/L	n.d.	n.d.	Not Detected	Not Detected	-
2,3,6-Trichlorophenol	933-75-5	0.5	µg/L	n.d.	n.d.	Not Detected	Not Detected	-
2,4,5-Trichlorophenol	95-95-4	0.5	µg/L	n.d.	n.d.	Not Detected	Not Detected	-
2,4,6-Trichlorophenol	88-06-2	0.5	µg/L	n.d.	n.d.	Not Detected	Not Detected	-
3,4,5-Trichlorophenol	609-19-8	0.5	µg/L	n.d.	n.d.	Not Detected	Not Detected	-
2,3,5,6-Tetrachlorophenol	935-95-5	0.5	µg/L	n.d.	n.d.	Not Detected	Not Detected	-
2,3,4,6-Tetrachlorophenol	58-90-2	0.5	µg/L	n.d.	n.d.	Not Detected	Not Detected	-
2,3,4,5-Tetrachlorophenol	4901-51-3	0.5	µg/L	n.d.	n.d.	Not Detected	Not Detected	-
Pentachlorophenol (PCP)	87-86-5	0.5	µg/L	n.d.	n.d.	Not Detected	Not Detected	-
Dimethyl Formamide (DMFa)								
Dimethyl formamide; N,N-dimethylformamide (DMFa)**	68-12-2	1000	µg/L	n.d.	n.d.	Not Detected	Not Detected	-
Dyes - Carcinogenic or Equivalent Concern								
Basic Violet 3 with >0.1% of Michler's Ketoneb	548-62-9	500	µg/L	n.d.	n.d.	Not Detected	Not Detected	-
C.I. Acid Red 26	3761-53-3	500	µg/L	n.d.	n.d.	Not Detected	Not Detected	-
C.I. Acid Violet 49	1694-09-3	500	µg/L	n.d.	n.d.	Not Detected	Not Detected	-
C.I. Basic Blue 26 with Michler's Ketone >0.1%	2580-56-5	500	µg/L	n.d.	n.d.	Not Detected	Not Detected	-
C.I. Basic Green 4 (Malachite Green Chloride)^	569-64-2	500	µg/L	n.d.	n.d.	Not Detected	Not Detected	-
C.I. Basic Green 4 (Malachite Green Oxalate)^	2437-29-8	500	µg/L	n.d.	n.d.	Not Detected	Not Detected	-
C.I. Basic Green 4 (Malachite Green)	10309-95-2	500	µg/L	n.d.	n.d.	Not Detected	Not Detected	-
C.I. Basic Red 9	569-61-9	500	µg/L	n.d.	n.d.	Not Detected	Not Detected	-
C.I. Basic Violet 14	632-99-5	500	µg/L	n.d.	n.d.	Not Detected	Not Detected	-
C.I. Direct Black 38	1937-37-7	500	µg/L	n.d.	n.d.	Not Detected	Not Detected	-
C.I. Direct Blue 6	2602-46-2	500	µg/L	n.d.	n.d.	Not Detected	Not Detected	-
C.I. Direct Red 28	573-58-0	500	µg/L	n.d.	n.d.	Not Detected	Not Detected	-
C.I. Disperse Blue 1	2475-45-8	500	µg/L	n.d.	n.d.	Not Detected	Not Detected	-
C.I. Disperse Blue 3	2475-46-9	500	µg/L	n.d.	n.d.	Not Detected	Not Detected	-

TEST RESULTS

Factory Name: Jiangsu Lianfa Textile Co., Ltd.
Factory Address: No.88 Henglian Road, Chengdong Town, Hai'an City, Jiangsu Province

Sample ID	52415339635001-01	52415339635001-02
Date of Sampling	10-09-2024	10-09-2024
Sampling Location	Raw wastewater collection tank	Raw wastewater collection tank
Sampling Start Time	11:00	11:20
Sampling End Time	17:10	17:30
Date of Sample Received	11-09-2024	11-09-2024

Items	CAS No.	Reporting Limit	Units	Factory Performances		Untreated Wastewater (Dyeing)	Untreated Wastewater (Finishing)	Effluent
				Untreated Wastewater (Dyeing)	Untreated Wastewater (Finishing)			
Disperse Orange 11	82-28-0	500	µg/L	n.d.	n.d.	Not Detected	Not Detected	-
Dyes - Disperse (Allergenic)								
Disperse Blue 102	12222-97-8	50	µg/L	n.d.	n.d.	Not Detected	Not Detected	-
Disperse Blue 106	12223-01-7	50	µg/L	n.d.	n.d.	Not Detected	Not Detected	-
Disperse Blue 124	61951-51-7	50	µg/L	n.d.	n.d.	Not Detected	Not Detected	-
Disperse Blue 26	3860-63-7	50	µg/L	n.d.	n.d.	Not Detected	Not Detected	-
Disperse Blue 35	12222-75-2, 56524-77-7	50	µg/L	n.d.	n.d.	Not Detected	Not Detected	-
Disperse Blue 7	3179-90-6	50	µg/L	n.d.	n.d.	Not Detected	Not Detected	-
Disperse Brown 1	23355-64-8	50	µg/L	n.d.	n.d.	Not Detected	Not Detected	-
Disperse Orange 1	2581-69-3	50	µg/L	n.d.	n.d.	Not Detected	Not Detected	-
Disperse Orange 3	730-40-5	50	µg/L	n.d.	n.d.	Not Detected	Not Detected	-
Disperse Orange 37/59/76	13301-61-6	50	µg/L	n.d.	n.d.	Not Detected	Not Detected	-
Disperse Red 1	2872-52-8	50	µg/L	n.d.	n.d.	Not Detected	Not Detected	-
Disperse Red 11	2872-48-2	50	µg/L	n.d.	n.d.	Not Detected	Not Detected	-
Disperse Red 17	3179-89-3	50	µg/L	n.d.	n.d.	Not Detected	Not Detected	-
Disperse Yellow 1	119-15-3	50	µg/L	n.d.	n.d.	Not Detected	Not Detected	-
Disperse Yellow 3	2832-40-8	50	µg/L	n.d.	n.d.	Not Detected	Not Detected	-
Disperse Yellow 39	12236-29-2	50	µg/L	n.d.	n.d.	Not Detected	Not Detected	-
Disperse Yellow 49	54824-37-2	50	µg/L	n.d.	n.d.	Not Detected	Not Detected	-
Disperse Yellow 9	6373-73-5	50	µg/L	n.d.	n.d.	Not Detected	Not Detected	-
Dyes - Navy Blue Colourant								
Component 1: C39H23Cl-CrN7O12S 2Na	118685-33-9	500	µg/L	n.d.	n.d.	Not Detected	Not Detected	-
Component 2: C46H-30CrN10O20S2 3Na	Not Allocated	500	µg/L	n.d.	n.d.	Not Detected	Not Detected	-
Flame Retardants								
2,2-bis(bromomethyl)-1,3-propanediol (BBMP)	3296-90-0	25	µg/L	n.d.	n.d.	Not Detected	Not Detected	-
Bis(2,3-dibromopropyl) phosphate (BIS)	5412-25-9	25	µg/L	n.d.	n.d.	Not Detected	Not Detected	-
Decabromodiphenyl ether (DecaBDE)	1163-19-5	25	µg/L	n.d.	n.d.	Not Detected	Not Detected	-
Hexabromocyclodecane (HBCDD)	3194-55-6	25	µg/L	n.d.	n.d.	Not Detected	Not Detected	-
Octabromodiphenyl ether (OctaBDE)	32536-52-0	25	µg/L	n.d.	n.d.	Not Detected	Not Detected	-
Pentabromodiphenyl ether (PentaBDE)	32534-81-9	25	µg/L	n.d.	n.d.	Not Detected	Not Detected	-

TEST RESULTS

Factory Name: Jiangsu Lianfa Textile Co., Ltd.
Factory Address: No.88 Henglian Road, Chengdong Town, Hai'an City, Jiangsu Province

Sample ID	52415339635001-01	52415339635001-02
Date of Sampling	10-09-2024	10-09-2024
Sampling Location	Raw wastewater collection tank	Raw wastewater collection tank
Sampling Start Time	11:00	11:20
Sampling End Time	17:10	17:30
Date of Sample Received	11-09-2024	11-09-2024

Items	CAS No.	Reporting Limit	Units	Factory Performances		Untreated Wastewater (Dyeing)	Untreated Wastewater (Finishing)	Effluent
				Untreated Wastewater (Dyeing)	Untreated Wastewater (Finishing)			
Pentabromodiphenyl ether (PentaBDE)	59536-65-1	25	µg/L	n.d.	n.d.	Not Detected	Not Detected	-
Tetrabromobisphenol A (TBBPA)	79-94-7	25	µg/L	n.d.	n.d.	Not Detected	Not Detected	-
Tris-(2-chloro-1-methylethyl) phosphate (TCPP)	13674-84-5	25	µg/L	n.d.	n.d.	Not Detected	Not Detected	-
Tris(1-aziridinyl)phosphine oxide (TEPA)	545-55-1	25	µg/L	n.d.	n.d.	Not Detected	Not Detected	-
Tris(1,3-dichloro-isopropyl) phosphate (TDCP)	13674-87-8	25	µg/L	n.d.	n.d.	Not Detected	Not Detected	-
Tris(2-chloroethyl) phosphate (TCEP)	115-96-8	25	µg/L	n.d.	n.d.	Not Detected	Not Detected	-
Tris(2,3,-dibromopropyl)-phosphate (TRIS)	126-72-7	25	µg/L	n.d.	n.d.	Not Detected	Not Detected	-
Decabromobiphenyl (DecaBB)	13654-09-6	25	µg/L	n.d.	n.d.	Not Detected	Not Detected	-
Dibromobiphenyls (DiBB)	Multiple	25	µg/L	n.d.	n.d.	Not Detected	Not Detected	-
Octabromobiphenyls (OctaBB)	Multiple	25	µg/L	n.d.	n.d.	Not Detected	Not Detected	-
Dibromopropylether	21850-44-2	25	µg/L	n.d.	n.d.	Not Detected	Not Detected	-
Heptabromodiphenyl ether (HeptaBDE)	68928-80-3	25	µg/L	n.d.	n.d.	Not Detected	Not Detected	-
Hexabromodiphenyl ether (HexaBDE)	36483-60-0	25	µg/L	n.d.	n.d.	Not Detected	Not Detected	-
Monobromobiphenyls (MonoBB)	Multiple	25	µg/L	n.d.	n.d.	Not Detected	Not Detected	-
Monobromodiphenylethers (MonoBDEs)	Multiple	25	µg/L	n.d.	n.d.	Not Detected	Not Detected	-
Nonabromobiphenyls (NonaBB)	Multiple	25	µg/L	n.d.	n.d.	Not Detected	Not Detected	-
Nonabromodiphenyl ether (NonaBDE)	63936-56-1	25	µg/L	n.d.	n.d.	Not Detected	Not Detected	-
Tetrabromodiphenyl ether (TetraBDE)	40088-47-9	25	µg/L	n.d.	n.d.	Not Detected	Not Detected	-
Tribromodiphenylethers (TriBDEs)	Multiple	25	µg/L	n.d.	n.d.	Not Detected	Not Detected	-
Boric acid	10043-35-3, 11113-50-1	100	µg/L	See Total Boron (B) Result	See Total Boron (B) Result	Not Detected	Not Detected	-
Diboron trioxide	1303-86-2	100	µg/L	See Total Boron (B) Result	See Total Boron (B) Result	Not Detected	Not Detected	-
Disodium octaborate	12008-41-2	100	µg/L	See Total Boron (B) Result	See Total Boron (B) Result	Not Detected	Not Detected	-
Disodium tetraborate anhydrous	1303-96-4, 1330-43-4	100	µg/L	See Total Boron (B) Result	See Total Boron (B) Result	Not Detected	Not Detected	-
Tetraboron disodium heptaoxide, hydrate	12267-73-1	100	µg/L	See Total Boron (B) Result	See Total Boron (B) Result	Not Detected	Not Detected	-
Glycols / Glycol Ethers								
2-ethoxyethanol	110-80-5	50	µg/L	n.d.	n.d.	Not Detected	Not Detected	-
2-ethoxyethyl acetate	111-15-9	50	µg/L	n.d.	n.d.	Not Detected	Not Detected	-
2-methoxyethanol	109-86-4	50	µg/L	n.d.	n.d.	Not Detected	Not Detected	-
2-methoxyethylacetate	110-49-6	50	µg/L	n.d.	n.d.	Not Detected	Not Detected	-

TEST RESULTS

Factory Name: Jiangsu Lianfa Textile Co., Ltd.
Factory Address: No.88 Henglian Road, Chengdong Town, Hai'an City, Jiangsu Province

Items	CAS No.	Reporting Limit	Units	Sample ID		Factory Performances		Local Wastewater Discharged Requirement%		
				52415339635001-01	52415339635001-02					
				Date of Sampling					10-09-2024	10-09-2024
				Sampling Location					Raw wastewater collection tank	Raw wastewater collection tank
				Sampling Start Time					11:00	11:20
				Sampling End Time					17:10	17:30
Date of Sample Received				11-09-2024	11-09-2024					
Items	CAS No.	Reporting Limit	Units	Untreated Wastewater (Dyeing)	Untreated Wastewater (Finishing)	Untreated Wastewater (Dyeing)	Untreated Wastewater (Finishing)	Effluent		
2-methoxypropylacetate	70657-70-4	50	µg/L	n.d.	n.d.	Not Detected	Not Detected	-		
Bis(2-methoxyethyl)-ether	111-96-6	50	µg/L	n.d.	n.d.	Not Detected	Not Detected	-		
Ethylene glycol dimethyl ether	110-71-4	50	µg/L	n.d.	n.d.	Not Detected	Not Detected	-		
Triethylene glycol dimethyl ether	112-49-2	50	µg/L	n.d.	n.d.	Not Detected	Not Detected	-		
Halogenated Solvents										
1,2-Dichloroethane	107-06-2	1	µg/L	n.d.	n.d.	Not Detected	Not Detected	-		
Methylene chloride	75-09-2	1	µg/L	n.d.	n.d.	Not Detected	Not Detected	-		
Tetrachloroethylene	127-18-4	1	µg/L	n.d.	n.d.	Not Detected	Not Detected	-		
Trichloroethylene	79-01-6	1	µg/L	n.d.	n.d.	Not Detected	Not Detected	-		
Organotin Compounds										
Dipropyltin compounds (DPT)	Multiple	0.01	µg/L	n.d.($<0.10\mu\text{g/L}$) ¹	n.d.	Not Detected	Not Detected	-		
Mono-, di- and tri-butyltin derivatives	Multiple	0.01	µg/L	n.d.($<0.10\mu\text{g/L}$) ¹	n.d.	Not Detected	Not Detected	-		
Monobutyltin (MBT)	1118-46-3, 78763-54-9	0.01	µg/L	n.d.($<0.10\mu\text{g/L}$) ¹	n.d.	Not Detected	Not Detected	-		
Dibutyltin (DBT)	1002-53-5	0.01	µg/L	n.d.($<0.10\mu\text{g/L}$) ¹	n.d.	Not Detected	Not Detected	-		
Tributyltin (TBT)	56573-85-4	0.01	µg/L	n.d.($<0.10\mu\text{g/L}$) ¹	n.d.	Not Detected	Not Detected	-		
Mono-, di- and tri-methyltin derivatives	Multiple	0.01	µg/L	n.d.($<0.10\mu\text{g/L}$) ¹	n.d.	Not Detected	Not Detected	-		
Monomethyltin (MMT)	Multiple	0.01	µg/L	n.d.($<0.10\mu\text{g/L}$) ¹	n.d.	Not Detected	Not Detected	-		
Dimethyltin (DMT)	Multiple	0.01	µg/L	n.d.($<0.10\mu\text{g/L}$) ¹	n.d.	Not Detected	Not Detected	-		
Trimethyltin (TMT)	Multiple	0.01	µg/L	n.d.($<0.10\mu\text{g/L}$) ¹	n.d.	Not Detected	Not Detected	-		
Mono-, di- and tri-octyltin derivatives	Multiple	0.01	µg/L	n.d.($<0.10\mu\text{g/L}$) ¹	n.d.	Not Detected	Not Detected	-		
Monooctyltin (MOT)	15231-57-9	0.01	µg/L	n.d.($<0.10\mu\text{g/L}$) ¹	n.d.	Not Detected	Not Detected	-		
Diocetyl tin (DOT)	94410-05-6, 12531-44-4	0.01	µg/L	n.d.($<0.10\mu\text{g/L}$) ¹	n.d.	Not Detected	Not Detected	-		
Triocetyl tin (TOT)	Multiple	0.01	µg/L	n.d.($<0.10\mu\text{g/L}$) ¹	n.d.	Not Detected	Not Detected	-		
Mono-, di- and tri-phenyltin derivatives	Multiple	0.01	µg/L	n.d.($<0.10\mu\text{g/L}$) ¹	n.d.	Not Detected	Not Detected	-		
Monophenyltin (MPHT)	Multiple	0.01	µg/L	n.d.($<0.10\mu\text{g/L}$) ¹	n.d.	Not Detected	Not Detected	-		
Diphenyltin (DPHT)	Multiple	0.01	µg/L	n.d.($<0.10\mu\text{g/L}$) ¹	n.d.	Not Detected	Not Detected	-		
Triphenyltin (TPHT)	892-20-6, 668-34-8	0.01	µg/L	n.d.($<0.10\mu\text{g/L}$) ¹	n.d.	Not Detected	Not Detected	-		
Tetrabutyltin compounds (TeBT)	Multiple	0.01	µg/L	n.d.($<0.10\mu\text{g/L}$) ¹	n.d.	Not Detected	Not Detected	-		
Tripropyltin Compounds (TPT)	Multiple	0.01	µg/L	n.d.($<0.10\mu\text{g/L}$) ¹	n.d.	Not Detected	Not Detected	-		
Tetraoctyltin compounds (TeOT)	Multiple	0.01	µg/L	n.d.($<0.10\mu\text{g/L}$) ¹	n.d.	Not Detected	Not Detected	-		

TEST RESULTS

Factory Name: Jiangsu Lianfa Textile Co., Ltd.
Factory Address: No.88 Henglian Road, Chengdong Town, Hai'an City, Jiangsu Province

Items	CAS No.	Reporting Limit	Units	Sample ID		Date of Sampling		Factory Performances	Local Wastewater Discharged Requirement%
				52415339635001-01	52415339635001-02	10-09-2024	10-09-2024		
				Raw wastewater collection tank	Raw wastewater collection tank	11:00	11:20		
				17:10	17:30				
				11-09-2024	11-09-2024				
Tricyclohexyltin (TCyHT)	Multiple	0.01	µg/L	n.d. (<0.10µg/L) ¹	n.d.	Not Detected	Not Detected	-	
Tetraethyltin Compounds (TeET)	Multiple	0.01	µg/L	n.d. (<0.10µg/L) ¹	n.d.	Not Detected	Not Detected	-	
Other/Miscellaneous Chemicals									
AEAA [2-(2-aminoethylamino) ethanol]	111-41-1	500	µg/L	n.d.	n.d.	Not Detected	Not Detected	-	
Bisphenol A	80-05-7	10	µg/L	n.d.	n.d.	Not Detected	Not Detected	-	
Thiourea	62-56-6	50	µg/L	n.d.	n.d.	Not Detected	Not Detected	-	
Quinoline	91-22-5	50	µg/L	n.d.	n.d.	Not Detected	Not Detected	-	
Borate, zinc salt	12767-90-7	100	µg/L	See Total Zinc (Zn) & Total Boron (B) Results	See Total Zinc (Zn) & Total Boron (B) Results	Not Detected	Not Detected	-	
Perfluorinated and Polyfluorinated Chemicals (PFCs)									
Perfluorooctane sulfonate (PFOS) ^{***}	1763-23-1	0.01	µg/L	n.d.	n.d.	Not Detected	Not Detected	-	
N-ethylperfluoro-1-octanesulfonamide (N-Et-FOSA)	4151-50-2	0.01	µg/L	n.d.	n.d.	Not Detected	Not Detected	-	
N-methylperfluoro-1-octanesulfonamide (N-Me-FOSA)	31506-32-8	0.01	µg/L	n.d.	n.d.	Not Detected	Not Detected	-	
2-(N-ethylperfluoro-1-octanesulfonamido)-ethanol (N-Et-FOSE)	1691-99-2	0.01	µg/L	n.d.	n.d.	Not Detected	Not Detected	-	
2-(N-methylperfluoro-1-octanesulfonamido)-ethanol (N-Me-FOSE)	24448-09-7	0.01	µg/L	n.d.	n.d.	Not Detected	Not Detected	-	
Perfluorooctane sulfonamide (PFOSA)	754-91-6	0.01	µg/L	n.d.	n.d.	Not Detected	Not Detected	-	
Perfluorooctanoic acid (PFOA) ^{****}	335-67-1	0.01	µg/L	n.d.	n.d.	Not Detected	Not Detected	-	
1H,1H,2H,2H-Perfluorodecanesulfonic acid (8:2 FTS)	39108-34-4	1	µg/L	n.d.	n.d.	Not Detected	Not Detected	-	
Methyl Perfluorooctanoate (Me-PFOA)	376-27-2	1	µg/L	n.d.	n.d.	Not Detected	Not Detected	-	
Ethyl Perfluorooctanoate (Et-PFOA)	3108-24-5	1	µg/L	n.d.	n.d.	Not Detected	Not Detected	-	
1H,1H,2H,2H-Perfluoro-1-decanol (8:2 FTOH)	678-39-7	1	µg/L	n.d.	n.d.	Not Detected	Not Detected	-	
1H,1H,2H,2H-Perfluorodecylacrylate (8:2 FTA)	27905-45-9	1	µg/L	n.d.	n.d.	Not Detected	Not Detected	-	
8:2 Fluorotelomer methacrylate (8:2 FTMA)	1996-88-9	1	µg/L	n.d.	n.d.	Not Detected	Not Detected	-	
Phthalates - including all other esters of ortho-phthalic acid									
1,2-benzenedicarboxylic acid, di-C6-8 branched and linear alkyl esters, C7-rich (DIHP)	71888-89-6, 84777-06-0	10	µg/L	n.d.	n.d.	Not Detected	Not Detected	-	
1,2-benzenedicarboxylic acid, di-C7-11 branched and linear alkyl esters (DHNUP)	68515-42-4, 68515-50-4	10	µg/L	n.d.	n.d.	Not Detected	Not Detected	-	
Bis(2-methoxyethyl) phthalate (DMEP)	117-82-8	10	µg/L	n.d.	n.d.	Not Detected	Not Detected	-	
Butyl benzyl phthalate (BBP)	85-68-7	10	µg/L	n.d.	n.d.	Not Detected	Not Detected	-	
Di-cyclohexyl phthalate (DCHP)	84-61-7	10	µg/L	n.d.	n.d.	Not Detected	Not Detected	-	
Di-iso-decyl phthalate (DIDP)	26761-40-0	10	µg/L	n.d.	n.d.	Not Detected	Not Detected	-	
Di-iso-octyl phthalate (DIOP)	27554-26-3	10	µg/L	n.d.	n.d.	Not Detected	Not Detected	-	

TEST RESULTS

Factory Name: Jiangsu Lianfa Textile Co., Ltd.
Factory Address: No.88 Henglian Road, Chengdong Town, Hai'an City, Jiangsu Province

Sample ID	52415339635001-01	52415339635001-02
Date of Sampling	10-09-2024	10-09-2024
Sampling Location	Raw wastewater collection tank	Raw wastewater collection tank
Sampling Start Time	11:00	11:20
Sampling End Time	17:10	17:30
Date of Sample Received	11-09-2024	11-09-2024

Items	CAS No.	Reporting Limit	Units	Factory Performances		Local Wastewater Discharged Requirement%
				Untreated Wastewater (Dyeing)	Untreated Wastewater (Finishing)	
Di-isobutyl phthalate (DIBP)	84-69-5	10	µg/L	n.d.	n.d.	-
Di-isononyl phthalate (DINP)	28553-12-0	10	µg/L	n.d.	n.d.	-
Di-n-hexyl phthalate (DnHP)	84-75-3	10	µg/L	n.d.	n.d.	-
Di-n-octyl phthalate (DNOP)	117-84-0	10	µg/L	n.d.	n.d.	-
Di-n-pentylphthalates	131-18-0	10	µg/L	n.d.	n.d.	-
Di-n-propyl phthalate (DPRP)	131-16-8	10	µg/L	n.d.	n.d.	-
Di(ethylhexyl) phthalate (DEHP)	117-81-7	10	µg/L	n.d.	n.d.	-
Dibutyl phthalate (DBP)	84-74-2	10	µg/L	n.d.	n.d.	-
Diethyl phthalate (DEP)	84-66-2	10	µg/L	n.d.	n.d.	-
Diisopentylphthalates	605-50-5	10	µg/L	n.d.	n.d.	-
Dinonyl phthalate (DNP)	84-76-4	10	µg/L	n.d.	n.d.	-
Polycyclic Aromatic Hydrocarbons (PAHs)						
Acenaphthene	83-32-9	1	µg/L	n.d.	n.d.	-
Acenaphthylene	208-96-8	1	µg/L	n.d.	n.d.	-
Anthracene	120-12-7	1	µg/L	n.d.	n.d.	-
Benzo[a]anthracene	56-55-3	1	µg/L	n.d.	n.d.	-
Benzo[a]pyrene (BaP)	50-32-8	1	µg/L	n.d.	n.d.	-
Benzo[b]fluoranthene	205-99-2	1	µg/L	n.d.	n.d.	-
Benzo[e]pyrene	192-97-2	1	µg/L	n.d.	n.d.	-
Benzo[ghi]perylene	191-24-2	1	µg/L	n.d.	n.d.	-
Benzo[j]fluoranthene	205-82-3	1	µg/L	n.d.	n.d.	-
Benzo[k]fluoranthene	207-08-9	1	µg/L	n.d.	n.d.	-
Chrysene	218-01-9	1	µg/L	n.d.	n.d.	-
Dibenz[a,h]anthracene	53-70-3	1	µg/L	n.d.	n.d.	-
Fluoranthene	206-44-0	1	µg/L	n.d.	n.d.	-
Fluorene	86-73-7	1	µg/L	n.d.	n.d.	-
Indeno[1,2,3-cd]pyrene	193-39-5	1	µg/L	n.d.	n.d.	-
Naphthalene	91-20-3	1	µg/L	n.d.	n.d.	-
Phenanthrene	85-01-8	1	µg/L	n.d.	n.d.	-

TEST RESULTS

Factory Name: Jiangsu Lianfa Textile Co., Ltd.
Factory Address: No.88 Henglian Road, Chengdong Town, Hai'an City, Jiangsu Province

Items	CAS No.	Reporting Limit	Units	Sample ID		Date of Sampling		Factory Performances	Local Wastewater Discharged Requirement%
				52415339635001-01	52415339635001-02	10-09-2024	10-09-2024		
				Raw wastewater collection tank	Raw wastewater collection tank				
				11:00	11:20				
				17:10	17:30				
				11-09-2024	11-09-2024				
Untreated Wastewater (Dyeing)	Untreated Wastewater (Finishing)	Untreated Wastewater (Dyeing)	Untreated Wastewater (Finishing)	Effluent					
Pyrene	129-00-0	1	µg/L	n.d.	n.d.	Not Detected	Not Detected	-	
Restricted Aromatic Amines (Cleavable from Azo-colourants)									
2-naphthylamine	91-59-8	0.1	µg/L	n.d.	n.d.	Not Detected	Not Detected	-	
2-Naphthylammoniumacetate [^]	553-00-4	0.1	µg/L	n.d.	n.d.	Not Detected	Not Detected	-	
2,4-xylidine	95-68-1	0.1	µg/L	n.d.	n.d.	Not Detected	Not Detected	-	
2,4,5-trimethylaniline	137-17-7	0.1	µg/L	n.d.	n.d.	Not Detected	Not Detected	-	
2,4,5-trimethylaniline hydrochloride [^]	21436-97-5	0.1	µg/L	n.d.	n.d.	Not Detected	Not Detected	-	
2,6-xylidine	87-62-7	0.1	µg/L	n.d.	n.d.	Not Detected	Not Detected	-	
3,3'-dichlorobenzidine	91-94-1	0.1	µg/L	n.d.	n.d.	Not Detected	Not Detected	-	
3,3-dimethoxybenzidine	119-90-4	0.1	µg/L	n.d.	n.d.	Not Detected	Not Detected	-	
3,3-dimethylbenzidine	119-93-7	0.1	µg/L	n.d.	n.d.	Not Detected	Not Detected	-	
4-aminoazobenzene	60-09-3	0.1	µg/L	n.d.	n.d.	Not Detected	Not Detected	-	
4-aminodiphenyl	92-67-1	0.1	µg/L	n.d.	n.d.	Not Detected	Not Detected	-	
4-chloro-o-toluidine	95-69-2	0.1	µg/L	n.d.	n.d.	Not Detected	Not Detected	-	
4-chloro-o-toluidinium chloride [^]	3165-93-3	0.1	µg/L	n.d.	n.d.	Not Detected	Not Detected	-	
4-chloroaniline	106-47-8	0.1	µg/L	n.d.	n.d.	Not Detected	Not Detected	-	
4-methoxy-m-phenylene diammonium sulphate; 2,4-diaminoaniline sulphate [^]	39156-41-7	0.1	µg/L	n.d.	n.d.	Not Detected	Not Detected	-	
4-methoxy-m-phenylenediamine	615-05-4	0.1	µg/L	n.d.	n.d.	Not Detected	Not Detected	-	
4-methyl-m-phenylenediamine	95-80-7	0.1	µg/L	n.d.	n.d.	Not Detected	Not Detected	-	
4,4-methylenebis-(2-chloro-aniline)	101-14-4	0.1	µg/L	n.d.	n.d.	Not Detected	Not Detected	-	
4,4-methylenedi-o-toluidine	838-88-0	0.1	µg/L	n.d.	n.d.	Not Detected	Not Detected	-	
4,4-methylenedianiline	101-77-9	0.1	µg/L	n.d.	n.d.	Not Detected	Not Detected	-	
4,4-oxydianiline	101-80-4	0.1	µg/L	n.d.	n.d.	Not Detected	Not Detected	-	
4,4-thiodianiline	139-65-1	0.1	µg/L	n.d.	n.d.	Not Detected	Not Detected	-	
5-nitro-o-toluidine	99-55-8	0.1	µg/L	n.d.	n.d.	Not Detected	Not Detected	-	
6-methoxy-m-toluidine	120-71-8	0.1	µg/L	n.d.	n.d.	Not Detected	Not Detected	-	
Benzidine	92-87-5	0.1	µg/L	n.d.	n.d.	Not Detected	Not Detected	-	
o-aminoazotoluene	97-56-3	0.1	µg/L	n.d.	n.d.	Not Detected	Not Detected	-	
o-anisidine	90-04-0	0.1	µg/L	n.d.	n.d.	Not Detected	Not Detected	-	

TEST RESULTS

Factory Name: Jiangsu Lianfa Textile Co., Ltd.
Factory Address: No.88 Henglian Road, Chengdong Town, Hai'an City, Jiangsu Province

Items	CAS No.	Reporting Limit	Units	Sample ID		Date of Sampling		Factory Performances	Local Wastewater Discharged Requirement%
				52415339635001-01	52415339635001-02	10-09-2024	10-09-2024		
				Raw wastewater collection tank	Raw wastewater collection tank				
				11:00	11:20				
				17:10	17:30				
				11-09-2024	11-09-2024				
Untreated Wastewater (Dyeing)	Untreated Wastewater (Finishing)	Untreated Wastewater (Dyeing)	Untreated Wastewater (Finishing)	Effluent					
o-toluidine	95-53-4	0.1	µg/L	n.d.	n.d.	Not Detected	Not Detected	-	
UV Absorbers									
2-(2H-benzotriazol-2-yl)-4-(tert-butyl)-6-(sec-butyl)phenol (UV-350)	36437-37-3	100	µg/L	n.d.	n.d.	Not Detected	Not Detected	-	
2-(2H-benzotriazol-2-yl)-4,6-ditertpentylphenol (UV-328)	25973-55-1	100	µg/L	n.d.	n.d.	Not Detected	Not Detected	-	
2-benzotriazol-2-yl-4,6-di-tertbutylphenol (UV-320)	3846-71-7	100	µg/L	n.d.	n.d.	Not Detected	Not Detected	-	
2,4-Di-tert-butyl-6-(5-chlorobenzotriazole-2-yl)phenol (UV-327)	3864-99-1	100	µg/L	n.d.	n.d.	Not Detected	Not Detected	-	
Volatile Organic Compounds (VOC)									
Benzene	71-43-2	1	µg/L	n.d.	n.d.	Not Detected	Not Detected	-	
m-cresol	108-39-4	1	µg/L	n.d.	n.d.	Not Detected	Not Detected	-	
o-cresol	95-48-7	1	µg/L	n.d.	n.d.	Not Detected	Not Detected	-	
p-cresol	106-44-5	1	µg/L	n.d.	n.d.	Not Detected	Not Detected	-	
Xylene	1330-20-7	1	µg/L	n.d.	n.d.	Not Detected	Not Detected	-	
Toluene**	108-88-3	1	µg/L	n.d.	n.d.	Not Detected	Not Detected	-	

Remarks:

n.d. = Not Detected

N/A = Not Tested / Not Applicable

*** = Not Required to be Test

^The test result is based on the calculation of selected element(s) and to the worst-case scenario

*Test data is provided by the client

**Sample and report only for mock leather

***PFOS refer to its salts/derivative including PFOS-K (CAS No.: 2795-39-3), PFOS-Li (CAS No.: 29457-72-5), PFOS-NH₄ (CAS No.: 29081-56-9), PFOS-NH(OH)₂ (CAS No.: 70225-14-8), PFOS-N(C₂H₅)₂ (CAS No.: 56773-42-3) and POSF (CAS No.: 307-35-7)

****PFOA refer to its salts including PFOA-Na (CAS No.: 335-95-5), PFOA-K (CAS No.: 2395-00-8), PFOA-Ag (CAS No.: 335-93-3), PFOA-F (CAS No.: 335-66-0) and APFO (CAS No.: 3825-26-1)

1) LOR values have been adjusted accordingly due to matrix interference

%Please refer to the details of the Local Wastewater Discharge Requirement in the Appendix Section

TEST PARAMETERS

Factory Name: Jiangsu Lianfa Textile Co., Ltd.
Factory Address: No.88 Henglian Road, Chengdong Town, Hai'an City, Jiangsu Province

ITEMS	CAS No.	METHODS	WASTEWATER			SLUDGE						LEACHATE							
			Foundational	Progressive	Aspirational	Pathway A	Pathway B	Pathway C	Pathway D	Pathway E	Pathway F	Pathway G	Pathway A	Pathway B	Pathway C	Pathway D	Pathway E	Pathway F	Pathway G
Conventional Parameters																			
pH	-	Wastewater: HJ 1147-2020 Sludge: HJ 962-2018	6-9			Sample and Report Only	Sample and Report Only	5-11	5-11	5-11	6.5-9	6.5-9							
Temperature	-	GB/T 13195-1991	Δ+15°C	Δ+10°C	Δ+5°C														
E. Coli	-	APHA 9221F	126 MPN / 100mL																
Colour (436nm; 525nm; 620nm)	-	ISO 7887:2011	7.5;3m ⁻¹	5;3;2m ⁻¹	2;1;1m ⁻¹														
Colour	-	HJ1182-2021	-																
Persistent Foam	-	-	No indication of Persistent Foam in receiving water																
Wastewater Flowrate	-	-	15m ³ per day																
Ammonium-N	-	HJ 535-2009	10mg/L	1mg/L	0.5mg/L														
AOX	-	ISO 9562:2004	3mg/L	0.5mg/L	0.1mg/L														
5-Days Biochemical Oxygen Demand (BOD5)	-	APHA 5210 B-2019	30mg/L	15mg/L	8mg/L														
Chemical Oxygen Demand (COD)	-	HJ 828-2017	150mg/L	80mg/L	40mg/L														
Dissolved Oxygen (DO)	-	HJ 506-2009	Sample and Report Only																
Oil & Grease	-	HJ 637-2018	10mg/L	2mg/L	0.5mg/L														
Total Phenols / Phenol Index	-	APHA 5530 B,C&D -2010	0.5mg/L	0.01mg/L	0.001mg/L														
Total Chlorine	-	APHA 4500-Cl-G-2011	Sample and Report Only																
Total Dissolved Solids (TDS)	-	APHA 2540 C-2020	Sample and Report Only																
Total Nitrogen	-	APHA 4500-N-C-2011	20mg/L	10mg/L	5mg/L														
Total Phosphorus	-	APHA 4500-P- J-2017	3mg/L	0.5mg/L	0.1mg/L														
Total Suspended Solids (TSS)	-	APHA 2540 D-2020	50mg/L	15mg/L	5mg/L														
% Solids	-	HJ 613-2011	-			Sample and Report Only	Sample and Report Only	Sample and Report Only	Sample and Report Only	Sample and Report Only	Sample and Report Only	Sample and Report Only							
Paint Filter Test	-	US EPA 9095B:2004	-			Sample and Report Only	Sample and Report Only	Sample and Report Only	Pass	Pass	Pass	Sample and Report Only							
Fecal Coliform	-	USEPA 1681	-			Sample and Report Only	Sample and Report Only	Sample and Report Only	Sample and Report Only	Sample and Report Only	1000MPN/g	1000MPN/g							
Anions																			
Chloride	-	HJ 84-2016	Sample and Report Only																
Cyanide	-	Wastewater: APHA 4500-CN-B, C&E-2016 Sludge: With reference to HJ 745-2015	0.2mg/L	0.1mg/L	0.05mg/L	Sample and Report Only	Sample and Report Only	100mg/kg	85mg/kg	70mg/kg	70mg/kg	70mg/kg							
Sulfate	-	HJ 84-2016	Sample and Report Only																
Sulfide	-	APHA 4500-S2-D-2011	0.5mg/L	0.05mg/L	0.01mg/L														
Sulfite	-	ISO 10304-3-1997	2mg/L	0.5mg/L	0.2mg/L														
Metals																			
Total Antimony (Sb)	7440-36-0	Wastewater: US EPA 200.8:1994 Sludge: US EPA 3050B:1996 & US EPA 6020B:2014 Leachate: US EPA 1311:1992 & USEPA 200.8:1994	0.1mg/L	0.05mg/L	0.01mg/L	-	-	-	-	-	-	Sample and Report Only	Sample and Report Only	Sample and Report Only	15mg/L	7.8mg/L	0.6mg/L	0.6mg/L	0.6mg/L

TEST PARAMETERS

Factory Name: Jiangsu Lianfa Textile Co., Ltd.
Factory Address: No.88 Henglian Road, Chengdong Town, Hai'an City, Jiangsu Province

ITEMS	CAS No.	METHODS	WASTEWATER			SLUDGE							LEACHATE						
			Foundational	Progressive	Aspirational	Pathway A	Pathway B	Pathway C	Pathway D	Pathway E	Pathway F	Pathway G	Pathway A	Pathway B	Pathway C	Pathway D	Pathway E	Pathway F	Pathway G
Quinoline	91-22-5	With reference to US EPA 3510C:1996 & US EPA 8270E:2018		50µg/L															
Borate, zinc salt	12767-90-7	US EPA 200.8:1994		100µg/L															
Perfluorinated and Polyfluorinated Chemicals (PFCs)		PFCs: With reference to US EPA 537.1:2020 & inhouse method FTOH: With reference to US EPA 3510C:1996 & US EPA 8270E:2018		PFCs: 0.01µg/L FTOH: 1µg/L															
Phthalates		With reference to US EPA 3510C:1996 & US EPA 8270E:2018		10µg/L															
Polycyclic Aromatic Hydrocarbons (PAHs)		<u>Wastewater:</u> With reference to US EPA 3510C:1996 & US EPA 8270E:2018 <u>Sludge:</u> With reference to US EPA 3570 & US EPA 8270E:2018		1µg/L	Sample and Report Only	Sample and Report Only	Sample and Report Only	0.2mg/kg	0.2mg/kg	0.2mg/kg	0.2mg/kg								
Restricted Aromatic Amines (Cleavable from Azo-colourants)		With reference to EN ISO 14362-1:2017, EN ISO 14362-3:2017 (if needed), US EPA 3510C:1996 & US EPA 8270E:2018		0.1µg/L															
UV Absorbers		With reference to in house method followed by LC-MS/MS		100µg/L															
Volatile Organic Compounds (VOCs)																			
Benzene	71-43-2	With reference to US EPA 8260D: 2018		1µg/L															
m-cresol / o-cresol / p-cresol	108-39-4 / 94-48-7 / 106-44-5	With reference to US EPA 3510C:1996 & US EPA 8270E:2018		1µg/L															
Xylene	1330-20-7	With reference to US EPA 8260D: 2018		1µg/L															
Toluene	108-88-3	With reference to US EPA 8260D: 2018		1µg/L															

PIPING PLAN

Factory Name: Jiangsu Lianfa Textile Co., Ltd.
Factory Address: No.88 Henglian Road, Chengdong Town, Hai'an City, Jiangsu Province



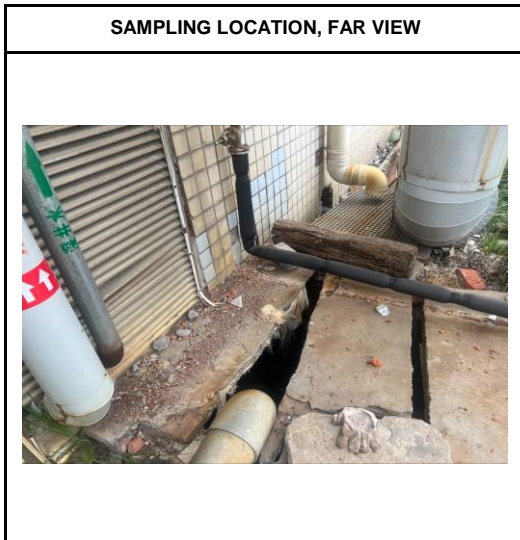
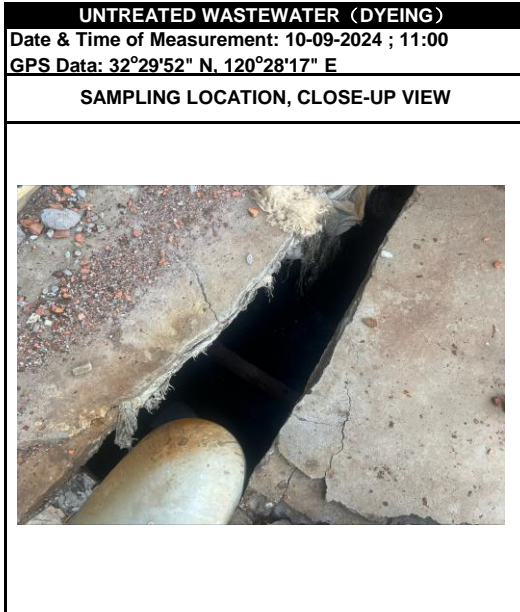
Remark:

- 1) Untreated Wastewater(Dyeing)
- 2) Untreated Wastewater(Finishing)

SAMPLING PHOTOS

Factory Name: Jiangsu Lianfa Textile Co., Ltd.

Factory Address: No.88 Henglian Road, Chengdong Town, Hai'an City, Jiangsu Province



ZDHC WASTEWATER SAMPLING FIELD DATA FORM AND REPRESENTATIVE SAMPLE DECLARATION

Factory Name: Jiangsu Lianfa Textile Co., Ltd.
Factory Address: No.88 Henglian Road, Chengdong Town, Hai'an City, Jiangsu Province

BHLR-WW-CG-016-16



ZDHC 废水采样现场数据和代表性样品声明
ZDHC Wastewater Sampling Field Data Form and Representative Sample Declaration

ZDHC 废水采样信息 ZDHC Wastewater Sampling Information:

工厂名称 Factory Name: 江苏联发纺织股份有限公司

工厂地址 Factory Address: 江苏省南通市海安市恒联路88号

采样日期 Sampling Date: 2024.9.10

采样种类 Sampling Type: Incoming Water Unrested Wastewater Effluent Sludge

样品ID Sample ID: 54819-01871

采样地点 Sampling Location: 车间

GPS数据 GPS Data: 32°31'17.02", 120°28'17.14"

采样时间 Sampling Time: 11:20-11:30

采样员信息 Sampler Information:

采样员姓名 Sampler Name: 张利超

采样员邮箱 Sampler E-mail: 06912449@545.com

ZDHC 授权证书编号 ZDHC Sampler Accreditation Cert. No.: C740106818014

采样方法 Sampling Method:

Incoming Water Grab 6-hour Composite Others, please specify: _____
 Autosampler Manual

Unrested Wastewater Grab 6-hour Composite Others, please specify: _____
 Autosampler Manual

Effluent Grab 6-hour Composite Others, please specify: _____
 Autosampler Manual

Sludge Grab 6-hour Composite Others, please specify: _____
 Autosampler Manual

排放方式 Discharge Method:

Direct Indirect (w/pretreatment) Indirect (w/o pretreatment) Zero Liquid Discharge (ZLD)

ZDHC 废水采样现场测试 QA/QC ZDHC Wastewater Sampling Field Testing QA/QC

Parameter	LCS Knowns	LCS Measured	Accuracy %
pH	1.02	2.0	99.7
Total Chlorine	NA	NA	NA

ZDHC 废水流量装置尺寸 ZDHC Wastewater Flow Device Dimensions

Measurement (cm)	Meter	Pipe (O)	Flume (U)	Wier (V)
Diameter	NA	NA	NA	NA
Depth	NA	NA	NA	NA

ZDHC 废水采样现场测试数据 (见附表水/土壤采样记录表)

ZDHC Wastewater Sample Collection Field Test Measurements (See attached data sheets of Water/Soil sampling records)

ZDHC 废水采样-工厂确认 ZDHC Wastewater Sampling - Facility Confirmation

废水样品是在工厂正常生产期间和废水流量下采集的。The wastewater samples have been collected under the facility's normal production scale and wastewater flow rate. 下面列出的采样点未对现场更改过样品。The identified flow rate was used to collect the samples.

工厂名称 Factory Name: 江苏联发纺织股份有限公司 采样员姓名 Sampler Name: 张利超

工厂代表姓名 Factory Representative Name: 张利超 ZDHC 授权证书编号 ZDHC Sampler Accreditation Cert. No.: C740106818014

工厂代表姓名和盖章 Factory Representative Signature and Stamp: 张利超 采样员签名 Sampler Signature: 张利超

日期 Date: 2024.9.10 日期 Date: 2024.9.10



水质采样记录 Water Sampling Records

SHSL-R-WI-CS-016-02

任务单号Task Number: SL524-0297.1 采样日期Sampling Date: 2024.9.10 委托单位Client: 江苏联发纺织股份有限公司
天气状况Weather Conditions: 31.8℃ 水体类型Type of Water: 废水 检验单位Factory: 江苏联发纺织股份有限公司
其他仪器设备(名称、编号) Other instruments and equipment (name, number): PH1 TX-71

参考采样规范Reference Sampling Specification: ZDHC-SAP Others:

样品编号 Sample Number	采样位置 Sampling Location	采样时间 Sampling Time (Hours)	温度Temp (°C)		pH	溶解氧 Dissolved Oxygen (mg/L)	总氯 Total Chlorine (mg/L)	废水流量 Wastewater Flow Meter (L/min)	交替测量值 Alternate Measured Flow		采样体积 Sample Volume (mL)	容器材质 Container Material	保存方式 Storage Method	可见颜色 Visible Colour	持久性泡沫 Persistent Foam (Yes/No)
			废水排放 Wastewater Discharge	接收水体 Receiving Water					深度 Depth (cm)	速度 Velocity (cm/s)					
SL524-0297.1	集水口	0	32.4		9.5			两个筒						紫色	No
		1	32.6		9.7			量一天						紫色	No
		2	32.7		9.7			平均						紫色	No
		3	33.2		9.4			5000/L			6070	PT4	1.4L	紫色	No
		4	33.1		9.8									紫色	No
		5	33.4		9.8									紫色	No
		6	31.5		9.7									紫色	No
均值 Average			32.7		9.7									紫色	No

备注: 容器材质: P代表PE瓶, G代表玻璃瓶, VOA代表棕色玻璃瓶, ST.Steel代表不锈钢, G-TLC代表带有特殊龙内衬的棕色玻璃瓶, P(A)代表瓶盖过的塑料瓶, G(A)=Glass (Acid Washed)酸洗过的玻璃瓶。
Container material: P for PE bottles, G for glass bottles, VOA for brown glass bottles, ST.Steel for stainless steel, G-TLC for brown glass bottles with Teflon lining lids, P(A) for pickled plastic bottles, G(A)=Glass (Acid Washed) for pickled glass bottles.
水质表观: 水体颜色、气味、有无漂浮物等。 Apparent water quality: water color, smell, presence or absence of floating objects, etc.
周边环境: 有无排污口, 是否死水区、回水区, 有无居民区、工业区, 有无居民区、工业区和农药化肥使用区等。
Surrounding environment: whether there is a sewage outlet, whether there is a stagnant water area, a backwater area, whether there is a residential area, an industrial area, whether there is a residential area, an industrial area and a pesticide and fertilizer use area, etc.
保存方式Storage method: 1.标签完好Unbroken label 2.冷藏Refrigeration 3.避光Protect from light 4.减振防震Vibration reduction 5.其他Others:

采样员Sampler: 张利超 客户确认Client Confirmation: 张利超

Effective date: 2023.12.26



水质采样记录 Water Sampling Records

SHSL-R-WI-CS-016-02

任务单号Task Number: SL524-0297.1 采样日期Sampling Date: 2024.9.10 委托单位Client: 江苏联发纺织股份有限公司
天气状况Weather Conditions: 31.8℃ 水体类型Type of Water: 废水 检验单位Factory: 江苏联发纺织股份有限公司
其他仪器设备(名称、编号) Other instruments and equipment (name, number): PH1 TX-71

参考采样规范Reference Sampling Specification: ZDHC-SAP Others:

样品编号 Sample Number	采样位置 Sampling Location	采样时间 Sampling Time (Hours)	温度Temp (°C)		pH	溶解氧 Dissolved Oxygen (mg/L)	总氯 Total Chlorine (mg/L)	废水流量 Wastewater Flow Meter (L/min)	交替测量值 Alternate Measured Flow		采样体积 Sample Volume (mL)	容器材质 Container Material	保存方式 Storage Method	可见颜色 Visible Colour	持久性泡沫 Persistent Foam (Yes/No)
			废水排放 Wastewater Discharge	接收水体 Receiving Water					深度 Depth (cm)	速度 Velocity (cm/s)					
SL524-0297.1	集水口	0	30.4		8.5									无色透明	No
		1	30.2		8.4									无色透明	No
		2	30.7		8.6									无色透明	No
		3	31.2		8.6						6070	PT4	1.4L	无色透明	No
		4	30.5		8.5									无色透明	No
		5	30.4		8.4									无色透明	No
		6	31.3		8.2									无色透明	No
均值 Average			30.7		8.5									无色透明	No

备注: 容器材质: P代表PE瓶, G代表玻璃瓶, VOA代表棕色玻璃瓶, ST.Steel代表不锈钢, G-TLC代表带有特殊龙内衬的棕色玻璃瓶, P(A)代表瓶盖过的塑料瓶, G(A)=Glass (Acid Washed)酸洗过的玻璃瓶。
Container material: P for PE bottles, G for glass bottles, VOA for brown glass bottles, ST.Steel for stainless steel, G-TLC for brown glass bottles with Teflon lining lids, P(A) for pickled plastic bottles, G(A)=Glass (Acid Washed) for pickled glass bottles.
水质表观: 水体颜色、气味、有无漂浮物等。 Apparent water quality: water color, smell, presence or absence of floating objects, etc.
周边环境: 有无排污口, 是否死水区、回水区, 有无居民区、工业区, 有无居民区、工业区和农药化肥使用区等。
Surrounding environment: whether there is a sewage outlet, whether there is a stagnant water area, a backwater area, whether there is a residential area, an industrial area, whether there is a residential area, an industrial area and a pesticide and fertilizer use area, etc.
保存方式Storage method: 1.标签完好Unbroken label 2.冷藏Refrigeration 3.避光Protect from light 4.减振防震Vibration reduction 5.其他Others:

采样员Sampler: 张利超 客户确认Client Confirmation: 张利超

Effective date: 2023.12.26