

## TEST REPORT

CLIENT DETAILS		LABORATORY DETAILS	
<b>Client Name:</b>	Coats Türkiye İplik Sanayi A.Ş.	<b>SGS Affiliate:</b>	SGS Turkey CRS
<b>Client Contact:</b>	Hamza Ahmetoğulları	<b>SGS Contact:</b>	Cüneyt Günay
<b>Telephone:</b>	+902242431550	<b>Telephone:</b>	+902123684000
<b>E-mail:</b>	<a href="mailto:Hamza.Ahmetoqullari@coats.com">Hamza.Ahmetoqullari@coats.com</a>	<b>E-mail:</b>	<a href="mailto:cuneyt.gunay@sgs.com">cuneyt.gunay@sgs.com</a>
<b>Address:</b>	Bolat OSB Mah. Mavi Cad. No: 2 Nilüfer Bursa Turkey	<b>Address:</b>	Osmanpaşa Mah. İş İstanbul Plaza No: 95-E Girişi Güneşli İstanbul Turkey

FACTORY DETAILS	
<b>Factory Name:</b>	Coats Türkiye İplik Sanayi A.Ş.
<b>Factory Contact:</b>	Hamza Ahmetoğulları
<b>Telephone:</b>	+902242431550
<b>E-mail:</b>	<a href="mailto:Hamza.Ahmetoqullari@coats.com">Hamza.Ahmetoqullari@coats.com</a>
<b>Address:</b>	Bolat OSB Mah. Mavi Cad. No: 2 Nilüfer Bursa Turkey
<b>Types of Mills:</b>	(2) Yarn Dyeing, Bleaching
<b>On-Site ETP:</b>	Yes
<b>Discharge Destination:</b>	To Centralized Waste Water Treatment Plant
<b>Name of Municipal/Centralized ETP:</b>	Bursa OSB Atıksu Tesisi
<b>Address of Municipal/Centralized ETP:</b>	Bursa OSB Atıksu Arıtma Tesisleri 75. Yıl Bulvarı Arıtma Caddesi Nilüfer / Bursa - Turkey

SAMPLE AND TESTING DETAILS	
<b>Sampling Country:</b>	SGS Turkey
<b>ZDHC Sampler's Certification No.:</b>	Nuri Kartal / 8F1465016562
<b>Sampling Date:</b>	05-08-2024
<b>Sample Received Date:</b>	06-08-2024
<b>Test Performing Period:</b>	06-08-2024-26-08-2024
<b>Sample Received Temperature:</b>	7,8 °C
<b>No. of Samples:</b>	Water (2)
<b>Sample Descriptions:</b>	1) Untreated Wastewater (6-hour Composite) 2) Effluent (6-hour Composite)
<b>Sample Volume</b>	10L water sample in total
<b>Testing Institute:</b>	SGS Turkey
<b>Discharge Method:</b>	Indirect Discharge with Pretreatment

## OVERALL RESULTS

	Untreated Wastewater	Effluent
<b>Conventional Parameters / Anions / Metals:</b>	-	Fulfill Progressive Limit
<b>MRSL Parameters:</b>	Detected	-

## REMARKS

- This test document cannot be reproduced in any way, except in full content, without prior approval in writing by the laboratory.
- The results shown in this test report refer only to the sampling and the sample(s) tested unless otherwise stated.
- SGS Supervise Gözetme Etüd Kontrol Servisleri A.Ş. -Tüketici ve Perakende Laboratuvarı (Consumer and Retail) operating as ZDHC tests is accredited by TÜRKAK according to AB-690-T and ISO/IEC 17025:2017 standard.
- This document is issued by the Company subject to its General Conditions of Service printed overleaf, available on request or accessible at [www.sgs.com/terms\\_and\\_conditions](http://www.sgs.com/terms_and_conditions) and, for electronic format documents, subject to Terms and Conditions for Electronic Documents at [www.sgs.com/terms-and-conditions/terms-e-document](http://www.sgs.com/terms-and-conditions/terms-e-document)
- Attention is drawn to the limitation of liability, indemnification and jurisdiction issues defined therein. Any holder of this document is advised that information contained hereon reflects the Company's findings at the time of its intervention only and within the limits of Client's instructions, if any. The Company's sole responsibility is to its Client and this document does not exonerate parties to a transaction from exercising all their rights and obligations under the transaction documents. Unsigned test reports are considered invalid. This document cannot be reproduced except in full, without prior written approval of the Company. Any unauthorized alteration, forgery or falsification of the content or appearance of this document is unlawful and offenders may be prosecuted to the fullest extent of the law. If it is important for the test result, the environmental conditions are specified in the test result table.
- SGS applied shared risk decision rule.
- SGS does not verify authenticity of any Brand/Trademark of products. Buyers must check if the product is genuine with the Brand/Trademark owner directly.
- Turkish Accreditation Agency (TURKAK) is a signatory to the European co-operation for Accreditation (EA) Multilateral Agreement (MLA) and to the International Laboratory Accreditation Cooperation (ILAC) Mutual Recognition Arrangement (MRA) for the recognition of test reports.
- Unless otherwise stated the results shown in this test report refer only to the sample(s) tested. Unless further specified in an individual contract the sample(s) retention time is 30 days.
- In this Test Report tests marked (1) are included in the TURKAK Accreditation Scope of this Laboratory
- Since the sludge did not form, it could not be collected and tested.

Signed for and on behalf of  
SGS Supervise Gözetme Etüd Kontrol Serv. A.S. İstanbul Turkey

MESUT AKPOLAT  
Customer Services Supervisor

MURAT ÖZTAŞ  
Customer Services Team Leader





**RESULT SUMMARY**

Factory Name: Coats Türkiye İplik Sanayi A.Ş.  
Factory Address: Bolat OSB Mah. Mavi Cad. No: 2 Nilüfer Bursa Turkey

TEST ITEMS	Untreated Wastewater	Effluent
Conventional Parameters	-	-
Anions	-	-
Metals	-	X
Alkylphenol (AP) & Alkylphenol Ethoxylates (APEOs)	O	-
Anti-Microbials & Biocides	O	-
Chlorinated Paraffins	O	-
Chlorobenzenes and Chlorotoluenes	O	-
Chlorophenols	O	-
Dimethyl Formamide (DMFa)	O	-
Dyes - Carcinogenic or Equivalent Concern	O	-
Dyes - Disperse (Allergenic)	O	-
Dyes - Navy Blue Colourant	O	-
Flame Retardants	X	-
Glycols / Glycol Ethers	O	-
Halogenated Solvents	O	-
Organotin Compounds	O	-
Other / Miscellaneous Chemicals	O	-
Perfluorinated and Polyfluorinated Chemicals (PFCs)	O	-
Phthalates	O	-
Polycyclic Aromatic Hydrocarbons (PAHs)	O	-
Restricted Aromatic Amines	O	-
UV Absorbers	O	-
Volatile Organic Compounds (VOCs)	O	-

Note:

X - Detected

O - Not Detected

N/A - Not Tested / Not Applicable

**TEST RESULTS**

Factory Name: Coats Türkiye İplik Sanayi A.Ş.  
Factory Address: Bolat OSB Mah. Mavi Cad. No: 2 Nilüfer Bursa Turkey

		Sample ID		Date of Sampling		Sampling Location		Sampling Start Time		Sampling End Time		Date of Sample Received		Factory Performances	Local Wastewater Discharged Requirement %				
		-		-		05.08.2024		05.08.2024		10:30		10:30				06.08.2024		06.08.2024	
		-		-		Untreated Wastewater Point		Discharge point											
		-		-															
		-		-															
		-		-															
		-		-															
Items	CAS No.	Reporting Limit	Units	Untreated Wastewater	Effluent	Untreated Wastewater	Effluent	Effluent	Effluent										
Sample Colour Description	-	-	-	Yellow	Yellow	-	-	-	-										
Wastewater Flowrate*	-	-	m <sup>3</sup> /day	-	1243	-	-	-	-										
Sludge Disposal Pathway	-	-	-	-	-	-	-	-	-										
<b>Metals</b>																			
Total Antimony (Sb)	7440-36-0	-	-	-	-	-	-	-	N/A										
Chromium (VI)	7440-47-3, 18540-29-9	0,001	mg/L	-	n.d.	-	-	Fulfill Aspirational Limit	N/A										
Total Barium (Ba)	7440-39-3	-	-	-	-	-	-	-	N/A										
Total Selenium (Se)	7782-49-2	-	-	-	-	-	-	-	N/A										
Total Arsenic (As)	7440-38-2	0,005	mg/L	-	0,007	-	-	Fulfill Progressive Limit	N/A										
Total Chromium (Cr)	7440-47-3	-	-	-	-	-	-	-	N/A										
Total Cobalt (Co)	7440-48-4	-	-	-	-	-	-	-	N/A										
Total Cadmium (Cd)	7440-43-9	0,01	mg/L	-	n.d.	-	-	Fulfill Aspirational Limit	N/A										
Total Copper (Cu)	7440-50-8	-	-	-	-	-	-	-	N/A										
Total Lead (Pb)	7439-92-1	0,01	mg/L	-	n.d.	-	-	Fulfill Aspirational Limit	N/A										
Total Nickel (Ni)	7440-02-0	-	-	-	-	-	-	-	N/A										
Total Silver (Ag)	7440-22-4	-	-	-	-	-	-	-	N/A										
Total Zinc (Zn)	7440-66-6	0,1	mg/L	n.d.	-	Not Detected	-	-	N/A										
Total Mercury (Hg)	7439-97-6	0,001	mg/L	-	n.d.	-	-	Fulfill Aspirational Limit	N/A										
Total Boron (B)	7440-42-8	0,1	mg/L	0.26	-	Detected	-	-	N/A										
<b>Alkylphenol (AP) and Alkylphenol Ethoxylates (APEOs): including all isomers</b>																			
Nonylphenol ethoxylates (NPEO)	9016-45-9, 26027-38-3, 37205-87-1, 68412-54-4, 127087-87-0	5	µg/L	n.d.	-	Not Detected	-	-	-										
Nonylphenol (NP), mixed isomers	11066-49-2, 25154-52-3, 84852-15-3	5	µg/L	n.d.	-	Not Detected	-	-	-										
Octylphenol ethoxylates (OPEO)	9002-93-1, 9036-19-5, 68987-90-6	5	µg/L	n.d.	-	Not Detected	-	-	-										
Octylphenol (OP), mixed isomers	140-66-9, 1806-26-4, 27193-28-8	5	µg/L	n.d.	-	Not Detected	-	-	-										
<b>Anti- Microbials &amp; Biocides</b>																			
o-Phenylphenol (+salts)	90-43-7	100	µg/L	n.d.	-	Not Detected	-	-	-										
Triclosan	3380-34-5	100	µg/L	n.d.	-	Not Detected	-	-	-										
Permethrin	Multiple	500	µg/L	n.d.	-	Not Detected	-	-	-										
<b>Chlorinated Parafins</b>																			

**TEST RESULTS**

Factory Name: Coats Türkiye İplik Sanayi A.Ş.  
Factory Address: Bolat OSB Mah. Mavi Cad. No: 2 Nilüfer Bursa Turkey

		Sample ID		Date of Sampling		Sampling Location		Sampling Start Time		Sampling End Time		Date of Sample Received		Factory Performances	Local Wastewater Discharged Requirement %
		-		-		05.08.2024		05.08.2024							
		Untreated Wastewater Point		Discharge point											
		10:30		10:30											
		16:30		16:30											
		06.08.2024		06.08.2024											
Items	CAS No.	Reporting Limit	Units	Untreated Wastewater	Effluent	Untreated Wastewater	Effluent	Effluent							
Medium-chain Chlorinated Paraffins (MCCPs) (C14-C17)	85535-85-9	500	µg/L	n.d.	-	Not Detected	-	-							
Short-chain Chlorinated Paraffin (SCCPs) (C10-C13)	85535-84-8	25	µg/L	n.d.	-	Not Detected	-	-							
<b>Chlorobenzenes and Chlorotoluenes</b>															
Monochlorobenzenes	108-90-7	0.2	µg/L	n.d.	-	Not Detected	-	-							
1,2-Dichlorobenzene	95-50-1	0.2	µg/L	n.d.	-	Not Detected	-	-							
1,3-Dichlorobenzene	541-73-1	0.2	µg/L	n.d.	-	Not Detected	-	-							
1,4-Dichlorobenzene	106-46-7	0.2	µg/L	n.d.	-	Not Detected	-	-							
1,2,3-Trichlorobenzene	87-61-6	0.2	µg/L	n.d.	-	Not Detected	-	-							
1,2,4-Trichlorobenzene	120-82-1	0.2	µg/L	n.d.	-	Not Detected	-	-							
1,3,5-Trichlorobenzene	108-70-3	0.2	µg/L	n.d.	-	Not Detected	-	-							
1,2,3,4-Tetrachlorobenzene	634-66-2	0.2	µg/L	n.d.	-	Not Detected	-	-							
1,2,3,5-Tetrachlorobenzene	634-90-2	0.2	µg/L	n.d.	-	Not Detected	-	-							
1,2,4,5-Tetrachlorobenzene	95-94-3	0.2	µg/L	n.d.	-	Not Detected	-	-							
Pentachlorobenzene	608-93-5	0.2	µg/L	n.d.	-	Not Detected	-	-							
Hexachlorobenzene	118-74-1	0.2	µg/L	n.d.	-	Not Detected	-	-							
2-Chlorotoluene	95-49-8	0.2	µg/L	n.d.	-	Not Detected	-	-							
3-Chlorotoluene	108-41-8	0.2	µg/L	n.d.	-	Not Detected	-	-							
4-Chlorotoluene	106-43-4	0.2	µg/L	n.d.	-	Not Detected	-	-							
2,3-Dichlorotoluene	32768-54-0	0.2	µg/L	n.d.	-	Not Detected	-	-							
2,4-Dichlorotoluene	95-73-8	0.2	µg/L	n.d.	-	Not Detected	-	-							
2,5-Dichlorotoluene	19398-61-9	0.2	µg/L	n.d.	-	Not Detected	-	-							
2,6-Dichlorotoluene	118-69-4	0.2	µg/L	n.d.	-	Not Detected	-	-							
3,4-Dichlorotoluene	95-75-0	0.2	µg/L	n.d.	-	Not Detected	-	-							
3,5-Dichlorotoluene	25186-47-4	0.2	µg/L	n.d.	-	Not Detected	-	-							
2,3,4-Trichlorotoluene	7359-72-0	0.2	µg/L	n.d.	-	Not Detected	-	-							
2,3,6-Trichlorotoluene	2077-46-5	0.2	µg/L	n.d.	-	Not Detected	-	-							
2,4,5-Trichlorotoluene	6639-30-1	0.2	µg/L	n.d.	-	Not Detected	-	-							

**TEST RESULTS**

Factory Name: Coats Türkiye İplik Sanayi A.Ş.  
Factory Address: Bolat OSB Mah. Mavi Cad. No: 2 Nilüfer Bursa Turkey

Items	CAS No.	Reporting Limit	Units	Sample ID		Date of Sampling		Factory Performances	Local Wastewater Discharged Requirement %
				-	-	05.08.2024	05.08.2024		
				Untreated Wastewater Point	Discharge point				
				Sampling Start Time	10:30	10:30			
				Sampling End Time	16:30	16:30			
				Date of Sample Received	06.08.2024	06.08.2024			
Items	CAS No.	Reporting Limit	Units	Untreated Wastewater	Effluent	Untreated Wastewater	Effluent	Effluent	
2,4,6-Trichlorotoluene	23749-65-7	0.2	µg/L	n.d.	-	Not Detected			
3,4,5-Trichlorotoluene	21472-86-6	0.2	µg/L	n.d.	-	Not Detected			
2,3,4,5-Tetrachlorotoluene	76057-12-0	0.2	µg/L	n.d.	-	Not Detected	-	-	
2,3,5,6-Tetrachlorotoluene	29733-70-8	0.2	µg/L	n.d.	-	Not Detected			
2,3,4,6-Tetrachlorotoluene	875-40-1	0.2	µg/L	n.d.	-	Not Detected	-	-	
Pentachlorotoluene	877-11-2	0.2	µg/L	n.d.	-	Not Detected	-	-	
<b>Chlorophenols</b>									
2-Chlorophenol	95-57-8	0.5	µg/L	n.d.	-	Not Detected	-	-	
3-Chlorophenol	108-43-0	0.5	µg/L	n.d.	-	Not Detected	-	-	
4-Chlorophenol	106-48-9	0.5	µg/L	n.d.	-	Not Detected	-	-	
2,3-Dichlorophenol	576-24-9	0.5	µg/L	n.d.	-	Not Detected	-	-	
2,4-Dichlorophenol	120-83-2	0.5	µg/L	n.d.	-	Not Detected	-	-	
2,5-Dichlorophenol	583-78-8	0.5	µg/L	n.d.	-	Not Detected	-	-	
2,6-Dichlorophenol	87-65-0	0.5	µg/L	n.d.	-	Not Detected	-	-	
3,4-Dichlorophenol	95-77-2	0.5	µg/L	n.d.	-	Not Detected	-	-	
3,5-Dichlorophenol	591-35-5	0.5	µg/L	n.d.	-	Not Detected	-	-	
2,3,4-Trichlorophenol	15950-66-0	0.5	µg/L	n.d.	-	Not Detected	-	-	
2,3,5-Trichlorophenol	933-78-8	0.5	µg/L	n.d.	-	Not Detected	-	-	
2,3,6-Trichlorophenol	933-75-5	0.5	µg/L	n.d.	-	Not Detected	-	-	
2,4,5-Trichlorophenol	95-95-4	0.5	µg/L	n.d.	-	Not Detected	-	-	
2,4,6-Trichlorophenol	88-06-2	0.5	µg/L	n.d.	-	Not Detected	-	-	
3,4,5-Trichlorophenol	609-19-8	0.5	µg/L	n.d.	-	Not Detected	-	-	
2,3,5,6-Tetrachlorophenol	935-95-5	0.5	µg/L	n.d.	-	Not Detected	-	-	
2,3,4,6-Tetrachlorophenol	58-90-2	0.5	µg/L	n.d.	-	Not Detected	-	-	
2,3,4,5-Tetrachlorophenol	4901-51-3	0.5	µg/L	n.d.	-	Not Detected	-	-	
Pentachlorophenol (PCP)	87-86-5	0.5	µg/L	n.d.	-	Not Detected	-	-	
<b>Dimethyl Formamide (DMFa)</b>									
Dimethyl formamide; N,N-dimethylformamide (DMFa)**	68-12-2	1000	µg/L	n.d.	-	Not Detected	-	-	
<b>Dyes - Carcinogenic or Equivalent Concern</b>									

**TEST RESULTS**

Factory Name: Coats Türkiye İplik Sanayi A.Ş.  
Factory Address: Bolat OSB Mah. Mavi Cad. No: 2 Nilüfer Bursa Turkey

Items	CAS No.	Reporting Limit	Units	Untreated Wastewater	Effluent	Factory Performances		Local Wastewater Discharged Requirement %	
						Sample ID	-		
						Date of Sampling	05.08.2024		05.08.2024
						Sampling Location	Untreated Wastewater Point		Discharge point
						Sampling Start Time	10:30		10:30
						Sampling End Time	16:30		16:30
						Date of Sample Received	06.08.2024		06.08.2024
Untreated Wastewater	Effluent	Effluent							
Basic Violet 3 with >0.1% of Michler's Ketoneb	548-62-9	500	µg/L	n.d.	-	Not Detected	-	-	
C.I. Acid Red 26	3761-53-3	500	µg/L	n.d.	-	Not Detected	-	-	
C.I. Acid Violet 49	1694-09-3	500	µg/L	n.d.	-	Not Detected	-	-	
C.I. Basic Blue 26 with Michler's Ketone >0.1%	2580-56-5	500	µg/L	n.d.	-	Not Detected	-	-	
C.I. Basic Green 4 (Malachite Green Chloride)^	569-64-2	500	µg/L	n.d.	-	Not Detected	-	-	
C.I. Basic Green 4 (Malachite Green Oxalate)^	2437-29-8	500	µg/L	n.d.	-	Not Detected	-	-	
C.I. Basic Green 4 (Malachite Green)	10309-95-2	500	µg/L	n.d.	-	Not Detected	-	-	
C.I. Basic Red 9	569-61-9	500	µg/L	n.d.	-	Not Detected	-	-	
C.I. Basic Violet 14	632-99-5	500	µg/L	n.d.	-	Not Detected	-	-	
C.I. Direct Black 38	1937-37-7	500	µg/L	n.d.	-	Not Detected	-	-	
C.I. Direct Blue 6	2602-46-2	500	µg/L	n.d.	-	Not Detected	-	-	
C.I. Direct Red 28	573-58-0	500	µg/L	n.d.	-	Not Detected	-	-	
C.I. Disperse Blue 1	2475-45-8	500	µg/L	n.d.	-	Not Detected	-	-	
C.I. Disperse Blue 3	2475-46-9	500	µg/L	n.d.	-	Not Detected	-	-	
Disperse Orange 11	82-28-0	500	µg/L	n.d.	-	Not Detected	-	-	
<b>Dyes - Disperse (Allergenic)</b>									
Disperse Blue 102	12222-97-8	50	µg/L	n.d.	-	Not Detected	-	-	
Disperse Blue 106	12223-01-7	50	µg/L	n.d.	-	Not Detected	-	-	
Disperse Blue 124	61951-51-7	50	µg/L	n.d.	-	Not Detected	-	-	
Disperse Blue 26	3860-63-7	50	µg/L	n.d.	-	Not Detected	-	-	
Disperse Blue 35	12222-75-2, 56524-77-7	50	µg/L	n.d.	-	Not Detected	-	-	
Disperse Blue 7	3179-90-6	50	µg/L	n.d.	-	Not Detected	-	-	
Disperse Brown 1	23355-64-8	50	µg/L	n.d.	-	Not Detected	-	-	
Disperse Orange 1	2581-69-3	50	µg/L	n.d.	-	Not Detected	-	-	
Disperse Orange 3	730-40-5	50	µg/L	n.d.	-	Not Detected	-	-	
Disperse Orange 37/59/76	13301-61-6	50	µg/L	n.d.	-	Not Detected	-	-	
Disperse Red 1	2872-52-8	50	µg/L	n.d.	-	Not Detected	-	-	

**TEST RESULTS**

Factory Name: Coats Türkiye İplik Sanayi A.Ş.  
Factory Address: Bolat OSB Mah. Mavi Cad. No: 2 Nilüfer Bursa Turkey

Items	CAS No.	Reporting Limit	Units	Sample ID		Date of Sampling		Factory Performances	Local Wastewater Discharged Requirement %
				Untreated Wastewater Point	Discharge point	05.08.2024	05.08.2024		
				Sampling Start Time	10:30	10:30			
				Sampling End Time	16:30	16:30			
				Date of Sample Received	06.08.2024	06.08.2024			
				Untreated Wastewater	Effluent	Untreated Wastewater	Effluent		
Disperse Red 11	2872-48-2	50	µg/L	n.d.	-	Not Detected	-	-	
Disperse Red 17	3179-89-3	50	µg/L	n.d.	-	Not Detected	-	-	
Disperse Yellow 1	119-15-3	50	µg/L	n.d.	-	Not Detected	-	-	
Disperse Yellow 3	2832-40-8	50	µg/L	n.d.	-	Not Detected	-	-	
Disperse Yellow 39	12236-29-2	50	µg/L	n.d.	-	Not Detected	-	-	
Disperse Yellow 49	54824-37-2	50	µg/L	n.d.	-	Not Detected	-	-	
Disperse Yellow 9	6373-73-5	50	µg/L	n.d.	-	Not Detected	-	-	
<b>Dyes - Navy Blue Colourant</b>									
Component 1: C39H23Cl-CrN7O12S 2Na	118685-33-9	500	µg/L	n.d.	-	Not Detected	-	-	
Component 2: C46H-30CrN10O20S2 3Na	Not Allocated	500	µg/L	n.d.	-	Not Detected	-	-	
<b>Flame Retardants</b>									
2,2-bis(bromomethyl)-1,3-propanediol (BBMP)	3296-90-0	25	µg/L	n.d.	-	Not Detected	-	-	
Bis(2,3-dibromopropyl) phosphate (BIS)	5412-25-9	25	µg/L	n.d.	-	Not Detected	-	-	
Decabromodiphenyl ether (DecaBDE)	1163-19-5	25	µg/L	n.d.	-	Not Detected	-	-	
Hexabromocyclodecane (HBCDD)	3194-55-6	25	µg/L	n.d.	-	Not Detected	-	-	
Octabromodiphenyl ether (OctaBDE)	32536-52-0	25	µg/L	n.d.	-	Not Detected	-	-	
Pentabromodiphenyl ether (PentaBDE)	32534-81-9	25	µg/L	n.d.	-	Not Detected	-	-	
Polybromobiphenyls (PBB)	59536-65-1	25	µg/L	n.d.	-	Not Detected	-	-	
Tetrabromobisphenol A (TBBPA)	79-94-7	25	µg/L	n.d.	-	Not Detected	-	-	
Tris-(2-chloro-1-methylethyl) phosphate (TCPP)	13674-84-5	25	µg/L	n.d.	-	Not Detected	-	-	
Tris(1-aziridinyl)phosphine oxide (TEPA)	545-55-1	25	µg/L	n.d.	-	Not Detected	-	-	
Tris(1,3-dichloro-isopropyl) phosphate (TDCP)	13674-87-8	25	µg/L	n.d.	-	Not Detected	-	-	
Tris(2-chloroethyl) phosphate (TCEP)	115-96-8	25	µg/L	n.d.	-	Not Detected	-	-	
Tris(2,3-dibromopropyl)-phosphate (TRIS)	126-72-7	25	µg/L	n.d.	-	Not Detected	-	-	
Decabromobiphenyl (DecaBB)	13654-09-6	25	µg/L	n.d.	-	Not Detected	-	-	
Dibromobiphenyls (DIBB)	Multiple	25	µg/L	n.d.	-	Not Detected	-	-	
Octabromobiphenyls (OctaBB)	Multiple	25	µg/L	n.d.	-	Not Detected	-	-	
Dibromopropylether	21850-44-2	25	µg/L	n.d.	-	Not Detected	-	-	



**TEST RESULTS**

Factory Name: Coats Türkiye İplik Sanayi A.Ş.  
Factory Address: Bolat OSB Mah. Mavi Cad. No: 2 Nilüfer Bursa Turkey

Items	CAS No.	Reporting Limit	Units	Untreated Wastewater	Effluent	Factory Performances		Local Wastewater Discharged Requirement %	
						Sample ID	-		
						Date of Sampling	05.08.2024		05.08.2024
						Sampling Location	Untreated Wastewater Point		Discharge point
						Sampling Start Time	10:30		10:30
						Sampling End Time	16:30		16:30
Date of Sample Received	06.08.2024	06.08.2024							
Heptabromodiphenyl ether (HeptaBDE)	68928-80-3	25	µg/L	n.d.	-	Not Detected	-	-	
Hexabromodiphenyl ether (HexaBDE)	36483-60-0	25	µg/L	n.d.	-	Not Detected	-	-	
Monobromobiphenyls (MonoBB)	Multiple	25	µg/L	n.d.	-	Not Detected	-	-	
Monobromodiphenylethers (MonoBDEs)	Multiple	25	µg/L	n.d.	-	Not Detected	-	-	
Nonabromobiphenyls (NonaBB)	Multiple	25	µg/L	n.d.	-	Not Detected	-	-	
Nonabromodiphenyl ether (NonaBDE)	63936-56-1	25	µg/L	n.d.	-	Not Detected	-	-	
Tetrabromodiphenyl ether (TetraBDE)	40088-47-9	25	µg/L	n.d.	-	Not Detected	-	-	
Tribromodiphenylethers (TriBDEs)	Multiple	25	µg/L	n.d.	-	Not Detected	-	-	
Boric acid	10043-35-3, 11113-50-1	100	µg/L	See Total Boron (B) Result	-	Detected	-	-	
Diboron trioxide	1303-86-2	100	µg/L	See Total Boron (B) Result	-	Detected	-	-	
Disodium octaborate	12008-41-2	100	µg/L	See Total Boron (B) Result	-	Detected	-	-	
Disodium tetraborate anhydrous	1303-96-4, 1330-43-4	100	µg/L	See Total Boron (B) Result	-	Detected	-	-	
Tetraboron disodium heptaoxide, hydrate	12267-73-1	100	µg/L	See Total Boron (B) Result	-	Detected	-	-	
<b>Glycols / Glycol Ethers</b>									
2-ethoxyethanol	110-80-5	50	µg/L	n.d.	-	Not Detected	-	-	
2-ethoxyethyl acetate	111-15-9	50	µg/L	n.d.	-	Not Detected	-	-	
2-methoxyethanol	109-86-4	50	µg/L	n.d.	-	Not Detected	-	-	
2-methoxyethylacetate	110-49-6	50	µg/L	n.d.	-	Not Detected	-	-	
2-methoxypropylacetate	70657-70-4	50	µg/L	n.d.	-	Not Detected	-	-	
Bis(2-methoxyethyl)-ether	111-96-6	50	µg/L	n.d.	-	Not Detected	-	-	
Ethylene glycol dimethyl ether	110-71-4	50	µg/L	n.d.	-	Not Detected	-	-	
Triethylene glycol dimethyl ether	112-49-2	50	µg/L	n.d.	-	Not Detected	-	-	
<b>Halogenated Solvents</b>									
1,2-Dichloroethane	107-06-2	1	µg/L	n.d.	-	Not Detected	-	-	
Methylene chloride	75-09-2	1	µg/L	n.d.	-	Not Detected	-	-	
Tetrachloroethylene	127-18-4	1	µg/L	n.d.	-	Not Detected	-	-	
Trichloroethylene	79-01-6	1	µg/L	n.d.	-	Not Detected	-	-	
<b>Organotin Compounds</b>									
Dipropyltin compounds (DPT)	Multiple	0,01	µg/L	n.d.	-	Not Detected	-	-	

**TEST RESULTS**

Factory Name: Coats Türkiye İplik Sanayi A.Ş.  
Factory Address: Bolat OSB Mah. Mavi Cad. No: 2 Nilüfer Bursa Turkey

Items	CAS No.	Reporting Limit	Units	Sample ID		Date of Sampling		Factory Performances	Local Wastewater Discharged Requirement %
				-	-	05.08.2024	05.08.2024		
				Untreated Wastewater Point	Discharge point				
				Sampling Start Time	10:30	10:30			
				Sampling End Time	16:30	16:30			
				Date of Sample Received	06.08.2024	06.08.2024			
Items	CAS No.	Reporting Limit	Units	Untreated Wastewater	Effluent	Untreated Wastewater	Effluent	Effluent	
Mono-, di- and tri-butyltin derivatives	Multiple	0,01	µg/L	n.d.	-	Not Detected	-	-	
Monobutyltin (MBT)	1118-46-3, 78763-54-9	0,01	µg/L	n.d.	-	Not Detected	-	-	
Dibutyltin (DBT)	1002-53-5	0,01	µg/L	n.d.	-	Not Detected	-	-	
Tributyltin (TBT)	56573-85-4	0,01	µg/L	n.d.	-	Not Detected	-	-	
Mono-, di- and tri-methyltin derivatives	Multiple	0,01	µg/L	n.d.	-	Not Detected	-	-	
Monomethyltin (MMT)	Multiple	0,01	µg/L	n.d.	-	Not Detected	-	-	
Dimethyltin (DMT)	Multiple	0,01	µg/L	n.d.	-	Not Detected	-	-	
Trimethyltin (TMT)	Multiple	0,01	µg/L	n.d.	-	Not Detected	-	-	
Mono-, di- and tri-octyltin derivatives	Multiple	0,01	µg/L	n.d.	-	Not Detected	-	-	
Monooctyltin (MOT)	15231-57-9	0,01	µg/L	n.d.	-	Not Detected	-	-	
Diocetyltn (DOT)	94410-05-6, 12531-44-4	0,01	µg/L	n.d.	-	Not Detected	-	-	
Triocetyltn (TOT)	Multiple	0,01	µg/L	n.d.	-	Not Detected	-	-	
Mono-, di- and tri-phenyltin derivatives	Multiple	0,01	µg/L	n.d.	-	Not Detected	-	-	
Monophenyltin (MPhT)	Multiple	0,01	µg/L	n.d.	-	Not Detected	-	-	
Diphenyltin (DPhT)	Multiple	0,01	µg/L	n.d.	-	Not Detected	-	-	
Triphenyltin (TPhT)	892-20-6, 668-34-8	0,01	µg/L	n.d.	-	Not Detected	-	-	
Tetrabutyltin compounds (TeBT)	Multiple	0,01	µg/L	n.d.	-	Not Detected	-	-	
Tripropyltin Compounds (TPT)	Multiple	0,01	µg/L	n.d.	-	Not Detected	-	-	
Tetraoctyltin compounds (TeOT)	Multiple	0,01	µg/L	n.d.	-	Not Detected	-	-	
Tricyclohexyltin (TCyHT)	Multiple	0,01	µg/L	n.d.	-	Not Detected	-	-	
Tetraethyltin Compounds (TeET)	Multiple	0,01	µg/L	n.d.	-	Not Detected	-	-	
<b>Other/Miscellaneous Chemicals</b>									
AEEA [2-(2-aminoethylamino) ethanol]	111-41-1	500	µg/L	n.d.	-	Not Detected	-	-	
Bisphenol A	80-05-7	10	µg/L	n.d.	-	Not Detected	-	-	
Thiourea	62-56-6	50	µg/L	n.d.	-	Not Detected	-	-	
Quinoline	91-22-5	50	µg/L	n.d.	-	Not Detected	-	-	
Borate, zinc salt	12767-90-7	100	µg/L	See Total Zinc (Zn) & Total Boron (B) Results	-	Not Detected	-	-	

**TEST RESULTS**

Factory Name: Coats Türkiye İplik Sanayi A.Ş.  
Factory Address: Bolat OSB Mah. Mavi Cad. No: 2 Nilüfer Bursa Turkey

	Sample ID		Date of Sampling		Factory Performances	Local Wastewater Discharged Requirement %		
	-		05.08.2024	05.08.2024				
	Sampling Location	Untreated Wastewater Point	Discharge point					
	Sampling Start Time	10:30	10:30					
	Sampling End Time	16:30	16:30					
	Date of Sample Received	06.08.2024	06.08.2024					
Items	CAS No.	Reporting Limit	Units	Untreated Wastewater	Effluent	Untreated Wastewater	Effluent	Effluent
<b>Perfluorinated and Polyfluorinated Chemicals (PFCs)</b>								
Perfluorooctane sulfonate (PFOS)***	1763-23-1	0,01	µg/L	n.d.	-	Not Detected	-	-
N-ethylperfluoro-1-octanesulfonamide (N-Et-FOSA)	4151-50-2	0,01	µg/L	n.d.	-	Not Detected	-	-
N-methylperfluoro-1-octanesulfonamide (N-Me-FOSA)	31506-32-8	0,01	µg/L	n.d.	-	Not Detected	-	-
2-(N-ethylperfluoro-1-octanesulfonamido)-ethanol (N-Et-FOSE)	1691-99-2	0,01	µg/L	n.d.	-	Not Detected	-	-
2-(N-methylperfluoro-1-octanesulfonamido)-ethanol (N-Me-FOSE)	24448-09-7	0,01	µg/L	n.d.	-	Not Detected	-	-
Perfluorooctane sulfonamide (PFOSA)	754-91-6	0,01	µg/L	n.d.	-	Not Detected	-	-
Perfluorooctanoic acid (PFOA)****	335-67-1	0,01	µg/L	n.d.	-	Not Detected	-	-
1H,1H,2H,2H-Perfluorodecanesulfonic acid (8:2 FTS)	39108-34-4	1	µg/L	n.d.	-	Not Detected	-	-
Methyl Perfluorooctanoate (Me-PFOA)	376-27-2	1	µg/L	n.d.	-	Not Detected	-	-
Ethyl Perfluorooctanoate (Et-PFOA)	3108-24-5	1	µg/L	n.d.	-	Not Detected	-	-
1H,1H,2H,2H-Perfluoro-1-decanol (8:2 FTOH)	678-39-7	1	µg/L	n.d.	-	Not Detected	-	-
1H,1H,2H,2H-Perfluorodecylacrylate (8:2 FTA)	27905-45-9	1	µg/L	n.d.	-	Not Detected	-	-
8:2 Fluorotelomer methacrylate (8:2 FTMA)	1996-88-9	1	µg/L	n.d.	-	Not Detected	-	-
<b>Phthalates - including all other esters of ortho-phthalic acid</b>								
1,2-benzenedicarboxylic acid, di-C6-8 branched and linear alkyl esters, C7-rich (DIHP)	71888-89-6, 84777-06-0	10	µg/L	n.d.	-	Not Detected	-	-
1,2-benzenedicarboxylic acid, di-C7-11 branched and linear alkyl esters (DHNUP)	68515-42-4, 68515-50-4	10	µg/L	n.d.	-	Not Detected	-	-
Bis(2-methoxyethyl) phthalate (DMEP)	117-82-8	10	µg/L	n.d.	-	Not Detected	-	-
Butyl benzyl phthalate (BBP)	85-68-7	10	µg/L	n.d.	-	Not Detected	-	-
Di-cyclohexyl phthalate (DCHP)	84-61-7	10	µg/L	n.d.	-	Not Detected	-	-
Di-iso-decyl phthalate (DIDP)	26761-40-0	10	µg/L	n.d.	-	Not Detected	-	-
Di-iso-octyl phthalate (DIOP)	27554-26-3	10	µg/L	n.d.	-	Not Detected	-	-
Di-isobutyl phthalate (DIBP)	84-69-5	10	µg/L	n.d.	-	Not Detected	-	-
Di-isononyl phthalate (DINP)	28553-12-0	10	µg/L	n.d.	-	Not Detected	-	-
Di-n-hexyl phthalate (DnHP)	84-75-3	10	µg/L	n.d.	-	Not Detected	-	-
Di-n-octyl phthalate (DNOP)	117-84-0	10	µg/L	n.d.	-	Not Detected	-	-
Di-n-pentylphthalates	131-18-0	10	µg/L	n.d.	-	Not Detected	-	-
Di-n-propyl phthalate (DPRP)	131-16-8	10	µg/L	n.d.	-	Not Detected	-	-



**TEST RESULTS**

Factory Name: Coats Türkiye İplik Sanayi A.Ş.  
Factory Address: Bolat OSB Mah. Mavi Cad. No: 2 Nilüfer Bursa Turkey

Items	CAS No.	Reporting Limit	Units	Sample ID		Date of Sampling		Factory Performances	Local Wastewater Discharged Requirement %
				-	-	05.08.2024	05.08.2024		
				Untreated Wastewater Point	Discharge point				
				Sampling Location	Sampling Start Time	Sampling End Time			
				10:30	16:30	10:30	16:30		
				06.08.2024	06.08.2024				
				Date of Sample Received					
Untreated Wastewater	Effluent	Untreated Wastewater	Effluent	Effluent					
2,4,5-trimethylaniline	137-17-7	0,1	µg/L	n.d.	-	Not Detected	-	-	
2,4,5-trimethylaniline hydrochloride <sup>^</sup>	21436-97-5	0,1	µg/L	n.d.	-	Not Detected	-	-	
2,6-xylidine	87-62-7	0,1	µg/L	n.d.	-	Not Detected	-	-	
3,3'-dichlorobenzidine	91-94-1	0,1	µg/L	n.d.	-	Not Detected	-	-	
3,3-dimethoxybenzidine	119-90-4	0,1	µg/L	n.d.	-	Not Detected	-	-	
3,3-dimethylbenzidine	119-93-7	0,1	µg/L	n.d.	-	Not Detected	-	-	
4-aminoazobenzene	60-09-3	0,1	µg/L	n.d.	-	Not Detected	-	-	
4-aminodiphenyl	92-67-1	0,1	µg/L	n.d.	-	Not Detected	-	-	
4-chloro-o-toluidine	95-69-2	0,1	µg/L	n.d.	-	Not Detected	-	-	
4-chloro-o-toluidinium chloride <sup>^</sup>	3165-93-3	0,1	µg/L	n.d.	-	Not Detected	-	-	
4-chloroaniline	106-47-8	0,1	µg/L	n.d.	-	Not Detected	-	-	
4-methoxy-m-phenylene diammonium sulphate; 2,4-diaminoanisole sulphate <sup>^</sup>	39156-41-7	0,1	µg/L	n.d.	-	Not Detected	-	-	
4-methoxy-m-phenylenediamine	615-05-4	0,1	µg/L	n.d.	-	Not Detected	-	-	
4-methyl-m-phenylenediamine	95-80-7	0,1	µg/L	n.d.	-	Not Detected	-	-	
4,4-methylenebis-(2-chloro-aniline)	101-14-4	0,1	µg/L	n.d.	-	Not Detected	-	-	
4,4-methylenedi-o-toluidine	838-88-0	0,1	µg/L	n.d.	-	Not Detected	-	-	
4,4-methylenedianiline	101-77-9	0,1	µg/L	n.d.	-	Not Detected	-	-	
4,4-oxydianiline	101-80-4	0,1	µg/L	n.d.	-	Not Detected	-	-	
4,4-thiodianiline	139-65-1	0,1	µg/L	n.d.	-	Not Detected	-	-	
5-nitro-o-toluidine	99-55-8	0,1	µg/L	n.d.	-	Not Detected	-	-	
6-methoxy-m-toluidine	120-71-8	0,1	µg/L	n.d.	-	Not Detected	-	-	
Benzidine	92-87-5	0,1	µg/L	n.d.	-	Not Detected	-	-	
o-aminoazotoluene	97-56-3	0,1	µg/L	n.d.	-	Not Detected	-	-	
o-anisidine	90-04-0	0,1	µg/L	n.d.	-	Not Detected	-	-	
o-toluidine	95-53-4	0,1	µg/L	n.d.	-	Not Detected	-	-	
<b>UV Absorbers</b>									
2-(2H-benzotriazol-2-yl)-4-(tert-butyl)-6-(sec-butyl)phenol (UV-350)	36437-37-3	100	µg/L	n.d.	-	Not Detected	-	-	

**TEST RESULTS**

Factory Name: Coats Türkiye İplik Sanayi A.Ş.  
Factory Address: Bolat OSB Mah. Mavi Cad. No: 2 Nilüfer Bursa Turkey

	Sample ID		-		-		Factory Performances	Local Wastewater Discharged Requirement %	
	Date of Sampling		05.08.2024		05.08.2024				
	Sampling Location		Untreated Wastewater Point	Discharge point					
	Sampling Start Time		10:30		10:30				
	Sampling End Time		16:30		16:30				
	Date of Sample Received		06.08.2024		06.08.2024				
Items	CAS No.	Reporting Limit	Units	Untreated Wastewater	Effluent	Untreated Wastewater	Effluent	Effluent	
2-(2H-benzotriazol-2-yl)-4,6-ditertpentylphenol (UV-328)	25973-55-1	100	µg/L	n.d.	-	Not Detected	-	-	
2-benzotriazol-2-yl-4,6-ditertbutylphenol (UV-320)	3846-71-7	100	µg/L	n.d.	-	Not Detected	-	-	
2,4-Di-tert-butyl-6-(5-chlorobenzotriazole-2-yl)phenol (UV-327)	3864-99-1	100	µg/L	n.d.	-	Not Detected	-	-	
<b>Volatile Organic Compounds (VOC)</b>									
Benzene	71-43-2	1	µg/L	n.d.	-	Not Detected	-	-	
m-cresol	108-39-4	1	µg/L	n.d.	-	Not Detected	-	-	
o-cresol	95-48-7	1	µg/L	n.d.	-	Not Detected	-	-	
p-cresol	106-44-5	1	µg/L	n.d.	-	Not Detected	-	-	
Xylene	1330-20-7	1	µg/L	n.d.	-	Not Detected	-	-	
Toluene**	108-88-3	1	µg/L	n.d.	-	Not Detected	-	-	

**Remarks:**

"n.d." = Not Detected

"N/A" = Not Tested / Not Applicable

"-" = Not Required to be Test

^The test result is based on the calculation of selected element(s) and to the worst-case scenario

\*Test data is measured/provided by the client

\*\*Sample and report only for mock leather

\*\*\*PFOS refer to its salts/derivative including PFOS-K (CAS No.: 2795-39-3) , PFOS-Li (CAS No.: 29457-72-5), PFOS-NH<sub>4</sub> (CAS No.: 29081-66-9), PFOS-NH(OH)<sub>2</sub> (CAS No.: 70225-14-8), PFOS-N(C<sub>2</sub>H<sub>5</sub>)<sub>4</sub> (CAS No.: 56773-42-3) and POSF (CAS No.: 307-35-7)

\*\*\*\*PFOA refer to its salts including PFOA-Na (CAS No.: 335-95-5), PFOA-K (CAS No.: 2395-00-8), PFOA-Ag (CAS No.: 335-93-3), PFOA-F (CAS No.: 335-66-0) and APFO (CAS No.: 3825-26-1)

\*\*\*\*\*

TEST PARAMETERS

Factory Name: Coats Türkiye İplik Sanayi A.Ş.  
Factory Address: Bolat OSB Mah. Mavi Cad. No: 2 Nilüfer Bursa Turkey

ITEMS	CAS No.	METHODS	WASTEWATER			SLUDGE						LEACHATE						
			Foundational	Progressive	Aspirational	Pathway A	Pathway B	Pathway C	Pathway D	Pathway E	Pathway F	Pathway G	Pathway A	Pathway B	Pathway C	Pathway D	Pathway E	Pathway F
<b>Conventional Parameters</b>																		
pH	-	Wastewater: ISO 10523, USEPA 150.1, SM 4500 H <sup>+</sup> , HJ 1147 or IS 3025 (Part 11) - Electrometric method only Sludge: USEPA 9045 D or HJ 962	6-9			Sample and Report Only	Sample and Report Only	5-11	5-11	5-11	6.5-9	6.5-9						
Temperature	-	DIN 38 404-4, USEPA 170.1, SM 2550, GB/T 13195 or IS 3025 (Part 9)	Δ+15°C	Δ+10°C	Δ+5°C													
E. Coli	-	SM 9221 B presumptive, confirm positive with SM 9221 F or G	126cfu/100mL															
Colour (436nm; 525nm; 620nm)	-	ISO 7887 B	7.5;3m <sup>-1</sup>	5;3;2m <sup>-1</sup>	2;1;1m <sup>-1</sup>													
Persistent Foam	-	-	No indication of Persistent Foam in receiving water															
Wastewater Flowrate	-	-	15m <sup>3</sup> per day															
Ammonium-N	-	ISO 7150, ISO 11732, USEPA 350.1, USEPA 350.3, SM 4500 NH <sub>3</sub> D, E, F, G or H, HJ 535 or IS 3025 (Part 34) - Phenate or ammonia selective electrode only	10mg/L	1mg/L	0.5mg/L													
AOX	-	ISO 9562, HACH LCK 390 or HJ/T 83-2001	3mg/L	0.5mg/L	0.1mg/L													
5-Days Biochemical Oxygen Demand (BOD <sub>5</sub> )	-	ISO 5815-1, USEPA 405.1, SM 5210 B, HJ 505 or IS 3025 (Part 44) - Seeded dilution water (BOD <sub>5</sub> )	30mg/L	15mg/L	8mg/L													
Chemical Oxygen Demand (COD)	-	ISO 6060, ISO 15705, USEPA 410.4, SM 5220 D, HJ 828, GB/T 11914 or IS 3025 (Part 58)	150mg/L	80mg/L	40mg/L													
Dissolved Oxygen (DO)	-	ISO 5814, USEPA 360.1, SM 4500 O G or HJ 506	Sample and Report Only															
Oil & Grease	-	ISO 9377-2, USEPA 1664 Revision B, SM 5520 B or C, HJ 637 - Total oil and grease or IS 3025 (Part 39) - Partition gravimetric or partition infra-red	10mg/L	2mg/L	0.5mg/L													
Total Phenols / Phenol Index	-	ISO 6439, SM 5530 B or C, HJ 503 or IS 3025 (Part 43)	0.5mg/L	0.01mg/L	0.001mg/L													
Total Chlorine	-	ISO 7393-2, USEPA 330.5, SM 4500 Cl <sup>-</sup> G or HJ 586	Sample and Report Only															
Total Dissolved Solids (TDS)	-	USEPA 160.1, SM 2540 C, GB/T 5750.4-2006 (180°C centrifuge) or IS 3025 (Part 16) 179°C to 181°C	Sample and Report Only															
Total Nitrogen	-	ISO 11905 - Part 1, ISO 29441, USEPA 351.2, SM 4500 P J, SM 4500 N B, C, HJ 636 or IS 3025 (Part 34) (Ammonia, nitrate, nitrite, organic)	20mg/L	10mg/L	5mg/L													
Total Phosphorus	-	ISO 6878, ISO 11885, ISO 17294, USEPA 200.7, USEPA 200.8, USEPA 365.4, USEPA 6010 C, USEPA 6020 A, SM 4500 P J, GB/T 11893, IS 3025 (Part 31) or IS 3025 (Part 65)	3mg/L	0.5mg/L	0.1mg/L													
Total Suspended Solids (TSS)	-	ISO 11923, USEPA 160.2, SM 2540 D, GB/T 11901 or IS 3025 (Part 17) 103°C to 105°C	50mg/L	15mg/L	5mg/L													
% Solids	-	USEPA 160.3 or HJ 613 at 105°C	-			Sample and Report Only	Sample and Report Only	Sample and Report Only	Sample and Report Only	Sample and Report Only	Sample and Report Only	Sample and Report Only						
Paint Filter Test	-	USEPA SW-846 or USEPA 9095 B	-			Sample and Report Only	Sample and Report Only	Sample and Report Only	Pass	Pass	Pass	Sample and Report Only						
Fecal Coliform	-	USEPA 1681	-			Sample and Report Only	Sample and Report Only	Sample and Report Only	Sample and Report Only	Sample and Report Only	1000MPN/g	1000MPN/g						
<b>Anions</b>																		
Chloride	-	ISO 10304-1, ISO 15923-1, USEPA 300, SM 4110 B, C, SM 4500 Cl <sup>-</sup> D or E, HJ 84-2016 or IS 3025 (Part 32) - Potentiometric or automated ferriocyanide only	Sample and Report Only															
Cyanide	-	Wastewater: ISO 6703-1, -2, -3, ISO 14403-1, -2, USEPA 335.2, SM 4500 CN or HJ 484 Sludge: Preparation: USEPA 9013 Analysis: USEPA 9014, USEPA 9213 or HJ 745	0.2mg/L	0.1mg/L	0.05mg/L	Sample and Report Only	Sample and Report Only	100mg/kg	85mg/kg	70mg/kg	70mg/kg	70mg/kg						
Sulfate	-	ISO 10304-1, ISO 15923-1, USEPA 300, USEPA 9038, SM 4110 B, C, SM 4500 SO <sub>4</sub> <sup>2-</sup> E, F, G, HJ 84-2016 or IS 3025 (Part 24)	Sample and Report Only															
Sulfide	-	ISO 10530, SM 4500 S <sup>2-</sup> D, E, G or I, HJ 1226 or IS 3025 (Part 29) - Methylene blue only	0.5mg/L	0.05mg/L	0.01mg/L													
Sulfite	-	ISO 10304-3, SM 4500 SO <sub>3</sub> <sup>2-</sup> C or HJ 84-2016	2mg/L	0.5mg/L	0.2mg/L													
<b>Metals</b>																		
Total Antimony (Sb)	7440-36-0	Wastewater: ISO 17294, USEPA 200.8, USEPA 6010 C, USEPA 6020 A, HJ 700 or IS 3025 (Part 65) Sludge: Preparation: USEPA 3050 Analysis: USEPA 6010 D, USEPA 6020 B or HJ 803 Leachate: Leachate Extraction: USEPA 1311 or USEPA 3051 A Analysis: ISO 11885, ISO 17294-2, USEPA 200.7, USEPA 200.8, USEPA 6010 C or USEPA 6020 A	0.1mg/L	0.05mg/L	0.01mg/L	-	-	-	-	-	-	Sample and Report Only	Sample and Report Only	15mg/L	7.8mg/L	0.6mg/L	0.6mg/L	0.6mg/L
Chromium (VI)	7440-47-3, 18540-29-9	Wastewater: ISO 18412, USEPA 218.6, GB 7467 or IS 3025 (Part 52) Sludge: Preparation: USEPA 3060 A Analysis: USEPA 7196 or USEPA 7199 Leachate: Leachate Extraction: USEPA 1311 Analysis: ISO 18412, USEPA 7196 or USEPA 7199	0.05mg/L	0.005mg/L	0.001mg/L	-	-	-	-	-	-	50mg/kg	Sample and Report Only	Sample and Report Only	5mg/L	3.75mg/L	2.5mg/L	2.5mg/L

TEST PARAMETERS

Factory Name: Coats Türkiye İplik Sanayi A.Ş.  
Factory Address: Bolat OSB Mah. Mavi Cad. No: 2 Nilüfer Bursa Turkey

ITEMS	CAS No.	METHODS	WASTEWATER			SLUDGE						LEACHATE							
			Foundational	Progressive	Aspirational	Pathway A	Pathway B	Pathway C	Pathway D	Pathway E	Pathway F	Pathway G	Pathway A	Pathway B	Pathway C	Pathway D	Pathway E	Pathway F	Pathway G
Total Barium (Ba)	7440-39-3	<p><u>Wastewater:</u> USEPA 200.8, USEPA 6010 C, USEPA 6020 A or HJ 700</p> <p><u>Sludge:</u> Preparation: USEPA 3050 Analysis: USEPA 6010 D or USEPA 6020 B</p> <p><u>Leachate:</u> Leachate Extraction: USEPA 1311 or USEPA 3051 A Analysis: ISO 11885, ISO 17294-2, USEPA 200.7, USEPA 200.8, USEPA 6010 C or USEPA 6020 A</p> <p><u>Wastewater:</u> USEPA 200.8, USEPA 6010 C, USEPA 6020 A or HJ 700</p> <p><u>Sludge:</u> Preparation: USEPA 3050 Analysis: USEPA 6010 D or USEPA 6020 B</p> <p><u>Leachate:</u> Leachate Extraction: USEPA 1311 or USEPA 3051 A Analysis: ISO 11885, ISO 17294-2, USEPA 200.7, USEPA 200.8, USEPA 6010 C or USEPA 6020 A</p>	Sample and Report Only	-	-	-	-	-	-	-	Sample and Report Only	Sample and Report Only	Sample and Report Only	100mg/L	67.5mg/L	35mg/L	35mg/L	35mg/L	
Total Selenium (Se)	7782-49-2	<p><u>Wastewater:</u> USEPA 200.8, USEPA 6010 C, USEPA 6020 A or HJ 700</p> <p><u>Sludge:</u> Preparation: USEPA 3050 Analysis: USEPA 6010 D or USEPA 6020 B</p> <p><u>Leachate:</u> Leachate Extraction: USEPA 1311 or USEPA 3051 A Analysis: ISO 11885, ISO 17294-2, USEPA 200.7, USEPA 200.8, USEPA 6010 C or USEPA 6020 A</p> <p><u>Wastewater:</u> USEPA 200.8, USEPA 6010 C, USEPA 6020 A or HJ 700</p> <p><u>Sludge:</u> Preparation: USEPA 3050 Analysis: USEPA 6010 D or USEPA 6020 B</p> <p><u>Leachate:</u> Leachate Extraction: USEPA 1311 or USEPA 3051 A Analysis: ISO 11885, ISO 17294-2, USEPA 200.7, USEPA 200.8, USEPA 6010 C or USEPA 6020 A</p>	Sample and Report Only	-	-	-	-	-	-	100mg/kg	Sample and Report Only	Sample and Report Only	1mg/L	0.75mg/L	0.5mg/L	0.5mg/L	0.5mg/L	0.5mg/L	
Total Tin (Sn)	7440-31-5	<p><u>Wastewater:</u> USEPA 200.8, USEPA 6010 C, USEPA 6020 A or HJ 700</p> <p><u>Sludge:</u> Preparation: USEPA 3050 Analysis: USEPA 6010 D or USEPA 6020 B</p> <p><u>Leachate:</u> Leachate Extraction: USEPA 1311 or USEPA 3051 A Analysis: ISO 11885, ISO 17294-2, USEPA 200.7, USEPA 200.8, USEPA 6010 C or USEPA 6020 A</p> <p><u>Wastewater:</u> USEPA 200.8, USEPA 6010 C, USEPA 6020 A or HJ 700</p> <p><u>Sludge:</u> Preparation: USEPA 3050 Analysis: USEPA 6010 D or USEPA 6020 B</p> <p><u>Leachate:</u> Leachate Extraction: USEPA 1311 or USEPA 3051 A Analysis: ISO 11885, ISO 17294-2, USEPA 200.7, USEPA 200.8, USEPA 6010 C or USEPA 6020 A</p>	Sample and Report Only	-	-	-	-	-	-	-	-	-	-	-	-	-	-	-	-
Total Arsenic (As)	7440-38-2	<p><u>Wastewater:</u> ISO 17294, USEPA 200.8, USEPA 6010 C, USEPA 6020 A, HJ 700 or IS 3025 (Part 65)</p> <p><u>Sludge:</u> Preparation: USEPA 3050 Analysis: USEPA 6010 D, USEPA 6020 B or HJ 803</p> <p><u>Leachate:</u> Leachate Extraction: USEPA 1311 or USEPA 3051 A Analysis: ISO 11885, ISO 17294-2, USEPA 200.7, USEPA 200.8, USEPA 6010 C or USEPA 6020 A</p> <p><u>Wastewater:</u> ISO 17294, USEPA 200.8, USEPA 6010 C, USEPA 6020 A, HJ 700 or IS 3025 (Part 65)</p> <p><u>Sludge:</u> Preparation: USEPA 3050 Analysis: USEPA 6010 D, USEPA 6020 B or HJ 803</p> <p><u>Leachate:</u> Leachate Extraction: USEPA 1311 or USEPA 3051 A Analysis: ISO 11885, ISO 17294-2, USEPA 200.7, USEPA 200.8, USEPA 6010 C or USEPA 6020 A</p>	0.05mg/L	0.01mg/L	0.005mg/L	-	-	-	-	-	-	75mg/kg	Sample and Report Only	Sample and Report Only	5mg/L	2.75mg/L	0.5mg/L	0.5mg/L	0.5mg/L
Total Chromium (Cr)	7440-47-3	<p><u>Wastewater:</u> ISO 17294, USEPA 200.8, USEPA 6010 C, USEPA 6020 A, HJ 700 or IS 3025 (Part 65)</p> <p><u>Sludge:</u> Preparation: USEPA 3050 Analysis: USEPA 6010 D, USEPA 6020 B or HJ 803</p> <p><u>Leachate:</u> Leachate Extraction: USEPA 1311 or USEPA 3051 A Analysis: ISO 11885, ISO 17294-2, USEPA 200.7, USEPA 200.8, USEPA 6010 C or USEPA 6020 A</p> <p><u>Wastewater:</u> ISO 17294, USEPA 200.8, USEPA 6010 C, USEPA 6020 A, HJ 700 or IS 3025 (Part 65)</p> <p><u>Sludge:</u> Preparation: USEPA 3050 Analysis: USEPA 6010 D, USEPA 6020 B or HJ 803</p> <p><u>Leachate:</u> Leachate Extraction: USEPA 1311 or USEPA 3051 A Analysis: ISO 11885, ISO 17294-2, USEPA 200.7, USEPA 200.8, USEPA 6010 C or USEPA 6020 A</p>	0.2mg/L	0.1mg/L	0.05mg/L	-	-	-	-	-	-	3000mg/kg	Sample and Report Only	Sample and Report Only	15mg/L	10mg/L	5mg/L	5mg/L	5mg/L
Total Cobalt (Co)	7440-48-4	<p><u>Wastewater:</u> ISO 17294, USEPA 200.8, USEPA 6010 C, USEPA 6020 A, HJ 700, IS 3025 (Part 65) or IS 3025 (Part 41) - AAS instrumental method</p> <p><u>Sludge:</u> Preparation: USEPA 3050 Analysis: USEPA 6010 D, USEPA 6020 B or HJ 803</p> <p><u>Leachate:</u> Leachate Extraction: USEPA 1311 or USEPA 3051 A Analysis: ISO 11885, ISO 17294-2, USEPA 200.7, USEPA 200.8, USEPA 6010 C or USEPA 6020 A</p> <p><u>Wastewater:</u> ISO 17294, USEPA 200.8, USEPA 6010 C, USEPA 6020 A, GB 7475, HJ 700, IS 3025 (Part 65) or IS 3025 (Part 41) - AAS instrumental method</p> <p><u>Sludge:</u> Preparation: USEPA 3050 Analysis: USEPA 6010 D, USEPA 6020 B or HJ 803</p> <p><u>Leachate:</u> Leachate Extraction: USEPA 1311 or USEPA 3051 A Analysis: ISO 11885, ISO 17294-2, USEPA 200.7, USEPA 200.8, USEPA 6010 C or USEPA 6020 A</p>	0.05mg/L	0.02mg/L	0.01mg/L	-	-	-	-	-	-	Sample and Report Only	Sample and Report Only	Sample and Report Only	80mg/L	80mg/L	80mg/L	80mg/L	80mg/L
Total Cadmium (Cd)	7440-43-9	<p><u>Wastewater:</u> ISO 17294, USEPA 200.8, USEPA 6010 C, USEPA 6020 A, GB 7475, HJ 700, IS 3025 (Part 65) or IS 3025 (Part 42) - AAS instrumental method</p> <p><u>Sludge:</u> Preparation: USEPA 3050 Analysis: USEPA 6010 D, USEPA 6020 B or HJ 803</p> <p><u>Leachate:</u> Leachate Extraction: USEPA 1311 or USEPA 3051 A Analysis: ISO 11885, ISO 17294-2, USEPA 200.7, USEPA 200.8, USEPA 6010 C or USEPA 6020 A</p> <p><u>Wastewater:</u> ISO 17294, USEPA 200.8, USEPA 6010 C, USEPA 6020 A, GB 7475, HJ 700, IS 3025 (Part 65) or IS 3025 (Part 42) - AAS instrumental method</p> <p><u>Sludge:</u> Preparation: USEPA 3050 Analysis: USEPA 6010 D, USEPA 6020 B or HJ 803</p> <p><u>Leachate:</u> Leachate Extraction: USEPA 1311 or USEPA 3051 A Analysis: ISO 11885, ISO 17294-2, USEPA 200.7, USEPA 200.8, USEPA 6010 C or USEPA 6020 A</p>	0.1mg/L	0.05mg/L	0.01mg/L	-	-	-	-	-	-	85mg/kg	Sample and Report Only	Sample and Report Only	1mg/L	0.58mg/L	0.15mg/L	0.15mg/L	0.15mg/L
Total Copper (Cu)	7440-50-8	<p><u>Wastewater:</u> ISO 17294, USEPA 200.8, USEPA 6010 C, USEPA 6020 A, GB 7475, HJ 700, IS 3025 (Part 65) or IS 3025 (Part 47) - AAS instrumental method</p> <p><u>Sludge:</u> Preparation: USEPA 3050 Analysis: USEPA 6010 D, USEPA 6020 B or HJ 803</p> <p><u>Leachate:</u> Leachate Extraction: USEPA 1311 or USEPA 3051 A Analysis: ISO 11885, ISO 17294-2, USEPA 200.7, USEPA 200.8, USEPA 6010 C or USEPA 6020 A</p> <p><u>Wastewater:</u> ISO 17294, USEPA 200.8, USEPA 6010 C, USEPA 6020 A, GB 7475, HJ 700, IS 3025 (Part 65) or IS 3025 (Part 47) - AAS instrumental method</p> <p><u>Sludge:</u> Preparation: USEPA 3050 Analysis: USEPA 6010 D, USEPA 6020 B or HJ 803</p> <p><u>Leachate:</u> Leachate Extraction: USEPA 1311 or USEPA 3051 A Analysis: ISO 11885, ISO 17294-2, USEPA 200.7, USEPA 200.8, USEPA 6010 C or USEPA 6020 A</p>	1mg/L	0.5mg/L	0.25mg/L	-	-	-	-	-	-	4300mg/kg	Sample and Report Only	Sample and Report Only	25mg/L	17.5mg/L	10mg/L	10mg/L	10mg/L
Total Lead (Pb)	7439-92-1	<p><u>Wastewater:</u> ISO 17294, USEPA 200.8, USEPA 6010 C, USEPA 6020 A, GB 11912, HJ 700, IS 3025 (Part 65) or IS 3025 (Part 54) - AAS instrumental method</p> <p><u>Sludge:</u> Preparation: USEPA 3050 Analysis: USEPA 6010 D, USEPA 6020 B or HJ 803</p> <p><u>Leachate:</u> Leachate Extraction: USEPA 1311 or USEPA 3051 A Analysis: ISO 11885, ISO 17294-2, USEPA 200.7, USEPA 200.8, USEPA 6010 C or USEPA 6020 A</p> <p><u>Wastewater:</u> ISO 17294, USEPA 200.8, USEPA 6010 C, USEPA 6020 A, GB 11912, HJ 700, IS 3025 (Part 65) or IS 3025 (Part 54) - AAS instrumental method</p> <p><u>Sludge:</u> Preparation: USEPA 3050 Analysis: USEPA 6010 D, USEPA 6020 B or HJ 803</p> <p><u>Leachate:</u> Leachate Extraction: USEPA 1311 or USEPA 3051 A Analysis: ISO 11885, ISO 17294-2, USEPA 200.7, USEPA 200.8, USEPA 6010 C or USEPA 6020 A</p>	0.1mg/L	0.05mg/L	0.01mg/L	-	-	-	-	-	-	840mg/kg	Sample and Report Only	Sample and Report Only	5mg/L	2.75mg/L	0.5mg/L	0.5mg/L	0.5mg/L
Total Nickel (Ni)	7440-02-0	<p><u>Wastewater:</u> ISO 17294, USEPA 200.8, USEPA 6010 C, USEPA 6020 A, GB 11907, HJ 700 or IS 3025 (Part 65)</p> <p><u>Sludge:</u> Preparation: USEPA 3050 Analysis: USEPA 6010 D, USEPA 6020 B or HJ 803</p> <p><u>Leachate:</u> Leachate Extraction: USEPA 1311 or USEPA 3051 A Analysis: ISO 11885, ISO 17294-2, USEPA 200.7, USEPA 200.8, USEPA 6010 C or USEPA 6020 A</p> <p><u>Wastewater:</u> ISO 17294, USEPA 200.8, USEPA 6010 C, USEPA 6020 A, GB 11907, HJ 700 or IS 3025 (Part 65)</p> <p><u>Sludge:</u> Preparation: USEPA 3050 Analysis: USEPA 6010 D, USEPA 6020 B or HJ 803</p> <p><u>Leachate:</u> Leachate Extraction: USEPA 1311 or USEPA 3051 A Analysis: ISO 11885, ISO 17294-2, USEPA 200.7, USEPA 200.8, USEPA 6010 C or USEPA 6020 A</p>	0.2mg/L	0.1mg/L	0.05mg/L	-	-	-	-	-	-	420mg/kg	Sample and Report Only	Sample and Report Only	20mg/L	11.75mg/L	3.5mg/L	3.5mg/L	3.5mg/L
Total Silver (Ag)	7440-22-4	<p><u>Wastewater:</u> USEPA 200.8, USEPA 6010 C, USEPA 6020 A or HJ 700</p> <p><u>Sludge:</u> Preparation: USEPA 3050 Analysis: USEPA 6010 D or USEPA 6020 B</p> <p><u>Leachate:</u> Leachate Extraction: USEPA 1311 or USEPA 3051 A Analysis: ISO 11885, ISO 17294-2, USEPA 200.7, USEPA 200.8, USEPA 6010 C or USEPA 6020 A</p> <p><u>Wastewater:</u> USEPA 200.8, USEPA 6010 C, USEPA 6020 A or HJ 700</p> <p><u>Sludge:</u> Preparation: USEPA 3050 Analysis: USEPA 6010 D or USEPA 6020 B</p> <p><u>Leachate:</u> Leachate Extraction: USEPA 1311 or USEPA 3051 A Analysis: ISO 11885, ISO 17294-2, USEPA 200.7, USEPA 200.8, USEPA 6010 C or USEPA 6020 A</p>	0.1mg/L	0.05mg/L	0.005mg/L	-	-	-	-	-	-	Sample and Report Only	Sample and Report Only	Sample and Report Only	5mg/L	5mg/L	5mg/L	5mg/L	5mg/L





TEST PARAMETERS

Factory Name: Coats Türkiye İplik Sanayi A.Ş.  
Factory Address: Bolat OSB Mah. Mavi Cad. No: 2 Nilüfer Bursa Turkey

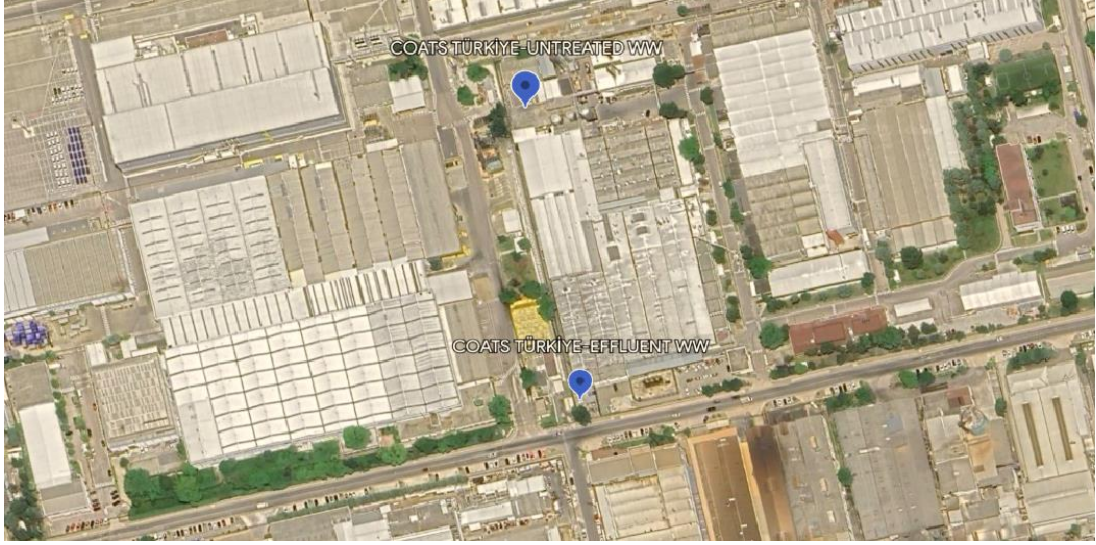
ITEMS	CAS No.	METHODS	WASTEWATER			SLUDGE						LEACHATE							
			Foundational	Progressive	Aspirational	Pathway A	Pathway B	Pathway C	Pathway D	Pathway E	Pathway F	Pathway G	Pathway A	Pathway B	Pathway C	Pathway D	Pathway E	Pathway F	Pathway G
<b>Glycols / Glycol Ethers</b>		With reference to USEPA 8270 E or Liquid extraction followed by LC-MS or GC-MS	50µg/L																
<b>Halogenated Solvents</b>		With reference to USEPA 8260 D, Purge and Trap or Headspace followed by GC-MS	1µg/L																
<b>Organotin Compounds</b>		<u>TaET</u> With reference to ISO 17353 <u>Chems</u> With reference to ISO 17353 or Derivatization with NiB(C <sub>2</sub> H <sub>5</sub> ) <sub>2</sub> , followed by GC-MS	0.01µg/L																
<b>Other/Miscellaneous Chemicals</b>																			
AEEA [2-(2-aminoethylamino) ethanol]	111-41-1	With reference to Liquid extraction followed by LC-MS/MS	500µg/L																
Bisphenol A	80-05-7	With reference to Liquid extraction followed by LC-MS	10µg/L																
Thiourea	62-56-6	With reference to Liquid extraction followed by LC-MS	50µg/L																
Quinoline	91-22-5	With reference to Liquid extraction followed by LC-MS	50µg/L																
Borate, zinc salt	12767-90-7	ISO 17294, USEPA 6010 C, USEPA 6020 A, HJ 700 or IS 3025 (Part 65)	100µg/L																
<b>Perfluorinated and Polyfluorinated Chemicals (PFCs)</b>		<u>PFCs</u> With reference to USEPA 537-2020 followed by LC-MS(-MS) <u>FTOH</u> With reference to BS EN 12673-1999, USEPA 8270 E or Derivatization with acetic anhydride followed by GC-MS	PFCs: 0.01µg/L FTOH: 1µg/L																
<b>Phthalates</b>		With reference to ISO 18856, USEPA 8270 E or Dichloromethane extraction followed by GC-MS	10µg/L																
<b>Polycyclic Aromatic Hydrocarbons (PAHs)</b>		<u>Wastewater</u> With reference to DIN 38407-39, USEPA 8270 E or Solvent extraction followed by GC-MS <u>Sludge</u> Preparation: With reference to USEPA 3540 / 3541 - Soxhlet or USEPA 3550 - Ultrasonic Clean-up: With reference to USEPA 3640 Analysis: With reference to USEPA 8270 E or HJ 805-2016	1µg/L	Sample and Report Only	Sample and Report Only	Sample and Report Only	0.2mg/kg	0.2mg/kg	0.2mg/kg	0.2mg/kg									
<b>Restricted Aromatic Amines (Cleavable from Azo-colourants)</b>		With reference to USEPA 8270 E or Reduction step with sodium dithionite, solvent extraction followed by GC-MS and LC-MS/MS	0.1µg/L																
<b>UV Absorbers</b>		With reference to ISO 22032, USEPA 527, USEPA 8270 E, USEPA 8321 B or Dichloromethane extraction followed by GC-MS or LC-MS(-MS)	100µg/L																
<b>Volatile Organic Compounds (VOCs)</b>																			
Benzene	71-43-2	With reference to ISO 11423-1, ISO 20595, USEPA 8260 D, Purge and Trap or Static Headspace followed by GC-MS	1µg/L																
<i>m</i> -cresol / <i>o</i> -cresol / <i>p</i> -cresol	108-39-4 / 96-49-7 / 106-44-5	With reference to BS EN 12637-1999, ISO 11423-1, USEPA 8270 E, Purge and Trap or Headspace followed by GC-MS	1µg/L																
Xylene	1330-20-7	With reference to ISO 11423-1, USEPA 8260 D, Purge and Trap or Headspace followed by GC-MS	1µg/L																
Toluene	108-88-3	With reference to ISO 11423-1, USEPA 8260 D or HJ 1067	1µg/L																

\*\*\*\*\*

## PIPING PLAN

Factory Name: Coats Türkiye İplik Sanayi A.Ş.

Factory Address: Bolat OSB Mah. Mavi Cad. No: 2 Nilüfer Bursa Turkey



\*\*\*\*\*

## SAMPLING PHOTOS

Factory Name: Coats Türkiye İplik Sanayi A.Ş.

Factory Address: Bolat OSB Mah. Mavi Cad. No: 2 Nilüfer Bursa Turkey

### UNTREATED WASTEWATER

GPS Data: 40°24'94" N, 28°95'09" E

#### SAMPLING LOCATION, CLOSE-UP VIEW



### EFFLUENT

GPS Data: 40°24'92" N, 28°95'07" E

#### SAMPLING LOCATION, CLOSE-UP VIEW



#### SAMPLING LOCATION, FAR VIEW



#### SAMPLING LOCATION, FAR VIEW



## LOCAL WASTEWATER DISCHARGE REQUIREMENT

Factory Name: Coats Türkiye İplik Sanayi A.Ş.  
Factory Address: Bolat OSB Mah. Mavi Cad. No: 2 Nilüfer Bursa Turkey

Tablo 1- Kanalizasyon Sistemine Atık su Deşarjı için Öngörülen Ön Arıtma ve Deşarj Standartları

Parametre	Limit Değer 2 saatlik kompozit	Limit Değer Anlık
Kimyasal Oksijen İhtiyacı (mg/l)	2.500	2.750
Askıda Katı Madde (mg/l)	800	880
Yağ ve Gres (mg/l)	120	132
Toplam Fosfor (mg/l)	25	27,5
Toplam Krom (mg/l)	3	3,3
Krom VI (mg/l)	0,5	0,55
Toplam Kurşun (mg/l)	2	2,2
Toplam Siyanür (mg/l)	1	1,1
Toplam Kadmiyum (mg/l)	0,1	0,11
Toplam Demir (mg/l)	25	27,5
Florür (mg/l)	15	16,5
Toplam Bakır (mg/l)	3	3,3
Toplam Çinko (mg/l)	20	22
Toplam Civa (mg/l)	0,05	0,055
Sülfat (mg/l)	1.700	1.870
Toplam Kjeldahl Azotu (mg/l)	100	110
Renk (Pt-Co)	2.000	2.200
pH	6-10	6-10

\*\*\*\*\* END OF REPORT \*\*\*\*\*

## ZDHC WASTEWATER SAMPLING FIELD DATA FORM AND REPRESENTATIVE SAMPLE DECLARATION

Factory Name: Coats Türkiye İplik Sanayi A.Ş.  
Factory Address: Bolat OSB Mah. Mavi Cad. No: 2 Nilüfer Bursa Turkey

**SGS**  
ZDHC Wastewater Sampling Field Data Form and Representative Sample Declaration

**ZDHC Wastewater Sampling Information:**  
 Factory Name: Coats Türkiye İplik Sanayi A.Ş.  
 Factory Address: Bolat OSB Mah. Mavi Cad. No: 2 Bursa  
 Sampling Location: 10-10-2024  
 GPS Date: 10-10-2024  
 Sampling Date: 10-10-2024  
 Sampling Time: 10:30-18:30  
 Sample ID: \_\_\_\_\_

**Sampler Information:**  
 Sampler Name: MURİ KAYAL  
 Sampler E-mail: murikayal@sgs.com.tr  
 ZDHC Sampler Accreditation Cert. No.: 271621002

**Sampling Method:**  
 Grab  In-line Composite  Other, please specify \_\_\_\_\_  
 Automatic  Manual

**Discharge Method:**  
 Direct  Indirect (Intermittent)  Indirect (Continuous)  Zero Liquid Discharge (ZLD)

**ZDHC Wastewater Sampling Field Testing (DASG)**

Parameter	Unit	CGI Method	Accuracy %
pH		9.00	10.0
Total Chlorine	mg/L	0.00	10.0

**ZDHC Wastewater Flow Data Dimensions**

Measurement Point	Flow (m³/h)	Flow (L/s)	Flow (m³/d)
Inlet	NA	NA	NA
Outlet	NA	NA	NA

**ZDHC Wastewater Sampling Colours Field Test Measurements**

Sampling Time (Hours)	Temp (°C)	pH	Visual Colour	Platinum-Cobalt (Pt-Co)	Hach DR/8900	Hach DR/8900	Hach DR/8900	Hach DR/8900	
								Colour (Pt-Co)	Colour (Pt-Co)
0	18.5	9.00	Yellow	410	5.49	5.49	5.49	5.49	5.49
1	18.5	9.00	Yellow	410	5.49	5.49	5.49	5.49	5.49
2	18.5	9.00	Yellow	410	5.49	5.49	5.49	5.49	5.49
3	18.5	9.00	Yellow	410	5.49	5.49	5.49	5.49	5.49
4	18.5	9.00	Yellow	410	5.49	5.49	5.49	5.49	5.49
5	18.5	9.00	Yellow	410	5.49	5.49	5.49	5.49	5.49
Average	18.5	9.00	Yellow	410	5.49	5.49	5.49	5.49	5.49

**ZDHC Wastewater Sampling - Facility Confirmation**  
 The wastewater sampler has been authorized under the facility's normal production mode and wastewater flow rate.  
 The sampler shall follow the on-site and indicated flow rate.  
 Factory Name: Coats Türkiye İplik Sanayi A.Ş.  
 Factory Representative Name: MURİ KAYAL  
 Factory Representative Signature and Stamp: Coats (Türkiye) İplik Sanayi A.Ş.  
 Sampler Name: MURİ KAYAL  
 ZDHC Sampler Accreditation Cert. No.: 271621002  
 Sampler Signature: \_\_\_\_\_

Scale 1 of 2 (2021)  
RSTG-WW-002

**SGS**  
ZDHC Wastewater Sampling Field Data Form and Representative Sample Declaration

**ZDHC Wastewater Sampling Information:**  
 Factory Name: Coats Türkiye İplik Sanayi A.Ş.  
 Factory Address: Bolat OSB Mah. Mavi Cad. No: 2 Bursa  
 Sampling Location: 10-10-2024  
 GPS Date: 10-10-2024  
 Sampling Date: 10-10-2024  
 Sampling Time: 10:30-18:30  
 Sample ID: \_\_\_\_\_

**Sampler Information:**  
 Sampler Name: MURİ KAYAL  
 Sampler E-mail: murikayal@sgs.com.tr  
 ZDHC Sampler Accreditation Cert. No.: 271621002

**Sampling Method:**  
 Grab  In-line Composite  Other, please specify \_\_\_\_\_  
 Automatic  Manual

**Discharge Method:**  
 Direct  Indirect (Intermittent)  Indirect (Continuous)  Zero Liquid Discharge (ZLD)

**ZDHC Wastewater Sampling Field Testing (DASG)**

Parameter	Unit	CGI Method	Accuracy %
Total Chlorine	mg/L	0.00	10.0

**ZDHC Wastewater Flow Data Dimensions**

Measurement Point	Flow (m³/h)	Flow (L/s)	Flow (m³/d)
Inlet	NA	NA	NA
Outlet	NA	NA	NA

**ZDHC Wastewater Sampling Colours Field Test Measurements**

Sampling Time (Hours)	Temp (°C)	pH	Visual Colour	Platinum-Cobalt (Pt-Co)	Hach DR/8900	Hach DR/8900	Hach DR/8900	Hach DR/8900	
								Colour (Pt-Co)	Colour (Pt-Co)
1	17.3	7.96	Yellow	410	5.49	5.49	5.49	5.49	5.49
2	18.5	7.96	Yellow	410	5.49	5.49	5.49	5.49	5.49
3	18.5	7.96	Yellow	410	5.49	5.49	5.49	5.49	5.49
4	18.5	7.96	Yellow	410	5.49	5.49	5.49	5.49	5.49
5	18.5	7.96	Yellow	410	5.49	5.49	5.49	5.49	5.49
Average	18.5	7.96	Yellow	410	5.49	5.49	5.49	5.49	5.49

**ZDHC Wastewater Sampling - Facility Confirmation**  
 The wastewater sampler has been authorized under the facility's normal production mode and wastewater flow rate.  
 The sampler shall follow the on-site and indicated flow rate.  
 Factory Name: Coats Türkiye İplik Sanayi A.Ş.  
 Factory Representative Name: MURİ KAYAL  
 Factory Representative Signature and Stamp: Coats (Türkiye) İplik Sanayi A.Ş.  
 Sampler Name: MURİ KAYAL  
 ZDHC Sampler Accreditation Cert. No.: 271621002  
 Sampler Signature: \_\_\_\_\_

Scale 1 of 2 (2021)  
RSTG-WW-002



**Report No.: TR2528872**  
**26-08-2024**

\*\*\*\*\* END OF REPORT \*\*\*\*\*