

## TEST REPORT

### CLIENT DETAILS

**Client Name:** ZHEJIANG MIZUDA TEXTILE PRINTING & DYEING CO., LTD.  
**Client Contact:** Chundan Lu  
**Telephone:** 0572-2678888  
**Email:** [lcd@mizuda.net](mailto:lcd@mizuda.net)  
**Address:** NO. 288 TIANZIWEI ROAD, WUXING, HUZHOU, ZHEJIANG

### LABORATORY DETAILS

**SGS Affiliate:** SGS-CSTC Ltd.  
**SGS Contact:** Amei Xu  
**Telephone:** +86(021)60645461  
**Email:** [Amei.Xu@sgs.com](mailto:Amei.Xu@sgs.com)  
**Address:** The 4th Building, No.889, Yishan Road, Xuhui District, Shanghai, China

### FACTORY DETAILS

**Factory Name:** ZHEJIANG MIZUDA TEXTILE PRINTING & DYEING CO.,LTD.  
**Factory Contact:** Chundan Lu  
**Telephone:** 0572-2678888/18157255205  
**Email:** lcd@mizuda.net  
**Address:** NO. 288 TIANZIWEI ROAD, WUXING, HUZHOU, ZHEJIANG  
**Types of Mills:** (1) Spinning (4) Fabric Dyeing, Finishing, Printing  
 (3) Fabric Dyeing, Finishing, Washing  
**Discharge Destination:** To Municipal Waste Water Treatment Plant  
**Name of Municipal/Centralized ETP:** Huzhou North Sewage Treatment Plant  
**Address of Municipal/Centralized ETP:** No.188 Jinhuan Road, Huanzhu Street, Wuxing District, Huzhou City, Zhejiang Province

### SAMPLE AND TESTING DETAILS

**Sampling Country:** SGS China SL  
**ZDHC Sampler's Certification No.:** 8F146507042  
**Sampling Date:** 15-04-2021  
**Sample Received Date:** 16-04-2021  
**Test Performing Period:** 16-04-2021 - 28-04-2021  
**No. of Samples:** Water (2)  
**Sample Descriptions:** 1) Incoming Water (Grab)  
 2) Raw Waste Water(Discharged Waste Water) (6-hour Composite)  
**Sample Volume:** 1) Incoming water 8L  
 2) Raw Waste Water(Discharged Waste Water) 20L  
**Testing Institute:** SGS China SH Lab  
**Discharge Method:** Indirect Discharge

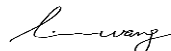
### OVERALL RESULTS

	Incoming Water	Raw Waste Water (Discharged Waste Water)
<b>Conventional Parameters / Anion / Metals:</b>	Fulfill Aspirational Limit	Please refer to the information in TEST RESULTS
<b>MRSL Parameters:</b>	Not Detected	Detected

### REMARKS

- 1.This test document cannot be reproduced in any way, except in full content, without prior approval in writing by the laboratory.
- 2.The results shown in this test report refer only to the sampling and the sample(s) tested unless otherwise stated.
3. For indirect discharge, factory performance against ZDHC requirements for conventional parameters, anions and metals for discharged waste water are for reference only. Actual factory performance on discharged waste water should be compared with the discharged license of the factory.
- 4.The treatment plant within the scope of the factory border is shared with the other factory, hence raw waste water is equal to discharged waste water.

Signed for and on behalf of  
SGS-CSTC Standards Technical Services (Shanghai) Co., Ltd Testing Center



Linda Wang  
Chemical Manager

**RESULT SUMMARY**

Factory Name: ZHEJIANG MIZUDA TEXTILE PRINTING & DYEING CO.,LTD.  
Factory Address: NO.288 TIANZIWEI ROAD, WUXING, HUZHOU, ZHEJIANG

TEST ITEMS	Incoming Water	Raw Waste Water (Discharged Waste Water)
Conventional Parameters	-	Please refer to the information in TEST RESULTS
Anions	-	X
Metals	O	X
Alkylphenols (APs) and Alkylphenol Ethoxylates (APEOs)	N/A	O
Chlorobenzenes and Chlorotoluenes (COCs)	N/A	O
Chlorophenols	N/A	O
Azo dyes	O	X
Carcinogenic dyes	N/A	O
Disperse dyes	N/A	O
Flame retardants	N/A	O
Glycols	N/A	O
Halogenated solvents	N/A	O
Organotin Compounds	O	X
Perfluorinated / Polyfluorinated Chemicals (PFCs)	N/A	O
Phthalates	N/A	O
Polycyclic Aromatic Hydrocarbons (PAHs)	N/A	O
Volatile Organic Compounds (VOCs)	N/A	O

Note:

X - Detected

O - Not Detected

N/A - Not Tested



TEST RESULTS

Factory Name: ZHEJIANG MIZUDA TEXTILE PRINTING & DYEING CO.,LTD.  
Factory Address: NO.288 TIANZIWEI ROAD, WUXING, HUZHOU, ZHEJIANG

	Sample ID		52105256162501-01	52105256162501-02	Factory Performances			*Local Requirements
	Date of Sampling		15-04-2021	15-04-2021				
	Sampling Location		River water intake	Raw wastewater collection tank				
	Sampling Start Time		11:50	11:30				
	Sampling End Time		12:00	17:50				
	Date of Sample Received		16-04-2021	16-04-2021				
Items	CAS No.	Reporting Limit	Units	Incoming Water	Raw Waste Water(Discharged Waste Water)	Incoming Water	Raw Waste Water(Discharged Waste Water)	Discharged Waste Water
Total Cobalt (Co)	7440-48-4	0.01	mg/L	n.d.	n.d.	Fulfill Aspirational Limit	Fulfill Aspirational Limit	N/A
Total Copper (Cu)	7440-50-8	0.25	mg/L	n.d.	n.d.	Fulfill Aspirational Limit	Fulfill Aspirational Limit	N/A
Total Nickel (Ni)	7440-02-0	0.05	mg/L	n.d.	n.d.	Fulfill Aspirational Limit	Fulfill Aspirational Limit	N/A
Total Silver (Ag)	7440-22-4	0.005	mg/L	n.d.	n.d.	Fulfill Aspirational Limit	Fulfill Aspirational Limit	N/A
Total Zinc (Zn)	7440-66-6	0.5	mg/L	n.d.	0.7	Fulfill Aspirational Limit	Fulfill Progressive Limit	N/A
Total Arsenic (As)	7440-38-2	0.005	mg/L	n.d.	n.d.	Fulfill Aspirational Limit	Fulfill Aspirational Limit	N/A
Total Cadmium (Cd)	7440-43-9	0.01	mg/L	n.d.	n.d.	Fulfill Aspirational Limit	Fulfill Aspirational Limit	N/A
Hexavalent Chromium (Cr-VI)	7440-47-3, 18540-29-9	0.001	mg/L	n.d.	n.d.	Fulfill Aspirational Limit	Fulfill Aspirational Limit	N/A
Total Lead (Pb)	7439-92-1	0.01	mg/L	n.d.	0.01	Fulfill Aspirational Limit	Fulfill Aspirational Limit	N/A
Total Mercury (Hg)	7439-97-6	0.001	mg/L	n.d.	n.d.	Fulfill Aspirational Limit	Fulfill Aspirational Limit	N/A
<b>Alkylphenols (APs) &amp; Alkylphenol Ethoxylates (APEOs)</b>								
Nonylphenol (NP), mixed isomers	Multiple, including 104-40-5, 11066-49-2, 25154-52-3, 84822-15-3, 90481-04-2, 1173019-62-9	5	µg/L	N/A	n.d.	N/A	Not Detected	-
Octylphenol (OP), mixed isomers	Multiple, including 140-66-9, 1806-29-4, 27193-28-8	5	µg/L	N/A	n.d.	N/A	Not Detected	-
Octylphenol ethoxylates (OPEO)	Multiple, including 9002-93-1, 9036-19-5, 68887-90-6	5	µg/L	N/A	n.d.	N/A	Not Detected	-
Nonylphenol ethoxylates (NPEO)	Multiple, including 9016-45-9, 26027-38-3, 37205-87-1, 68412-54-4, 127087-87-0	5	µg/L	N/A	n.d.	N/A	Not Detected	-
<b>Chlorobenzenes &amp; Chlorotoluenes (COCs)</b>								
Monochlorobenzenes	108-90-7	0.2	µg/L	N/A	n.d.	N/A	Not Detected	-
1,2-Dichlorobenzene	95-50-1	0.2	µg/L	N/A	n.d.	N/A	Not Detected	-
1,3-Dichlorobenzene	541-73-1	0.2	µg/L	N/A	n.d.	N/A	Not Detected	-
1,4-Dichlorobenzene	106-46-7	0.2	µg/L	N/A	n.d.	N/A	Not Detected	-
1,2,3-Trichlorobenzene	87-61-6	0.2	µg/L	N/A	n.d.	N/A	Not Detected	-
1,2,4-Trichlorobenzene	120-82-1	0.2	µg/L	N/A	n.d.	N/A	Not Detected	-
1,3,5-Trichlorobenzene	108-70-3	0.2	µg/L	N/A	n.d.	N/A	Not Detected	-
1,2,3,4-Tetrachlorobenzene	634-66-2	0.2	µg/L	N/A	n.d.	N/A	Not Detected	-
1,2,3,5-Tetrachlorobenzene	634-90-2	0.2	µg/L	N/A	n.d.	N/A	Not Detected	-
1,2,4,5-Tetrachlorobenzene	95-94-3	0.2	µg/L	N/A	n.d.	N/A	Not Detected	-

TEST RESULTS

Factory Name: ZHEJIANG MIZUDA TEXTILE PRINTING & DYEING CO.,LTD.  
Factory Address: NO.288 TIANZIWEI ROAD, WUXING, HUZHOU, ZHEJIANG

Items	CAS No.	Reporting Limit	Units	Sample ID		Date of Sampling		Sampling Location	Raw wastewater collection tank	Factory Performances	*Local Requirements
				52105256162501-01	52105256162501-02	15-04-2021	15-04-2021				
				Sampling Start Time	11:50	11:30					
				Sampling End Time	12:00	17:50					
				Date of Sample Received	16-04-2021	16-04-2021					
				Incoming Water	Raw Waste Water(Discharged Waste Water)	Incoming Water	Raw Waste Water(Discharged Waste Water)	Discharged Waste Water			
Pentachlorobenzene	608-93-5	0.2	µg/L	N/A	n.d.	N/A	Not Detected	-			
Hexachlorobenzene	118-74-1	0.2	µg/L	N/A	n.d.	N/A	Not Detected	-			
2-Chlorotoluene	95-49-8	0.2	µg/L	N/A	n.d.	N/A	Not Detected	-			
3-Chlorotoluene	108-41-8	0.2	µg/L	N/A	n.d.	N/A	Not Detected	-			
4-Chlorotoluene	106-43-4	0.2	µg/L	N/A	n.d.	N/A	Not Detected	-			
2,3-Dichlorotoluene	32768-54-0	0.2	µg/L	N/A	n.d.	N/A	Not Detected	-			
2,4-Dichlorotoluene	95-73-8	0.2	µg/L	N/A	n.d.	N/A	Not Detected	-			
2,5-Dichlorotoluene	19398-61-9	0.2	µg/L	N/A	n.d.	N/A	Not Detected	-			
2,6-Dichlorotoluene	118-69-4	0.2	µg/L	N/A	n.d.	N/A	Not Detected	-			
3,4-Dichlorotoluene	95-75-0	0.2	µg/L	N/A	n.d.	N/A	Not Detected	-			
3,5-Dichlorotoluene	25186-47-4	0.2	µg/L	N/A	n.d.	N/A	Not Detected	-			
2,3,4-Trichlorotoluene	7359-72-0	0.2	µg/L	N/A	n.d.	N/A	Not Detected	-			
2,3,6-Trichlorotoluene	2077-46-5	0.2	µg/L	N/A	n.d.	N/A	Not Detected	-			
2,4,5-Trichlorotoluene	6639-30-1	0.2	µg/L	N/A	n.d.	N/A	Not Detected	-			
2,4,6-Trichlorotoluene	23749-65-7	0.2	µg/L	N/A	n.d.	N/A	Not Detected	-			
3,4,5-Trichlorotoluene	21472-86-6	0.2	µg/L	N/A	n.d.	N/A	Not Detected	-			
2,3,4,5-Tetrachlorotoluene	76057-12-0	0.2	µg/L	N/A	n.d.	N/A	Not Detected	-			
2,3,5,6-Tetrachlorotoluene	29733-70-8	0.2	µg/L	N/A	n.d.	N/A	Not Detected	-			
2,3,4,6-Tetrachlorotoluene	875-40-1	0.2	µg/L	N/A	n.d.	N/A	Not Detected	-			
Pentachlorotoluene	877-11-2	0.2	µg/L	N/A	n.d.	N/A	Not Detected	-			
<b>Chlorophenols</b>											
2-Chlorophenol	95-57-8	0.5	µg/L	N/A	n.d.	N/A	Not Detected	-			
3-Chlorophenol	108-43-0	0.5	µg/L	N/A	n.d.	N/A	Not Detected	-			
4-Chlorophenol	106-48-9	0.5	µg/L	N/A	n.d.	N/A	Not Detected	-			
2,3-Dichlorophenol	576-24-9	0.5	µg/L	N/A	n.d.	N/A	Not Detected	-			

TEST RESULTS

Factory Name: ZHEJIANG MIZUDA TEXTILE PRINTING & DYEING CO.,LTD.  
Factory Address: NO.288 TIANZIWEI ROAD, WUXING, HUZHOU, ZHEJIANG

Items	CAS No.	Reporting Limit	Units	Sample ID		Date of Sampling		Sampling Location	Sampling Start Time	Sampling End Time	Date of Sample Received	Factory Performances	*Local Requirements
				52105256162501-01	52105256162501-02	15-04-2021	15-04-2021						
				Incoming Water	Raw Waste Water(Discharged Waste Water)	Incoming Water	Raw Waste Water(Discharged Waste Water)						
2,4-Dichlorophenol	120-83-2	0.5	µg/L	N/A	n.d.	N/A	Not Detected						-
2,5-Dichlorophenol	583-78-8	0.5	µg/L	N/A	n.d.	N/A	Not Detected						-
2,6-Dichlorophenol	87-65-0	0.5	µg/L	N/A	n.d.	N/A	Not Detected						-
3,4-Dichlorophenol	95-77-2	0.5	µg/L	N/A	n.d.	N/A	Not Detected						-
3,5-Dichlorophenol	591-35-5	0.5	µg/L	N/A	n.d.	N/A	Not Detected						-
2,3,4-Trichlorophenol	15950-66-0	0.5	µg/L	N/A	n.d.	N/A	Not Detected						-
2,3,5-Trichlorophenol	933-78-8	0.5	µg/L	N/A	n.d.	N/A	Not Detected						-
2,3,6-Trichlorophenol	933-75-5	0.5	µg/L	N/A	n.d.	N/A	Not Detected						-
2,4,5-Trichlorophenol	95-95-4	0.5	µg/L	N/A	n.d.	N/A	Not Detected						-
2,4,6-Trichlorophenol	88-06-2	0.5	µg/L	N/A	n.d.	N/A	Not Detected						-
3,4,5-Trichlorophenol	609-19-8	0.5	µg/L	N/A	n.d.	N/A	Not Detected						-
2,3,4,5-Tetrachlorophenol	4901-51-3	0.5	µg/L	N/A	n.d.	N/A	Not Detected						-
2,3,4,6-Tetrachlorophenol	58-90-2	0.5	µg/L	N/A	n.d.	N/A	Not Detected						-
2,3,5,6-Tetrachlorophenol	935-95-5	0.5	µg/L	N/A	n.d.	N/A	Not Detected						-
Pentachlorophenol	87-86-5	0.5	µg/L	N/A	n.d.	N/A	Not Detected						-
<b>Azo Dyes</b>													
4,4'-Methylene-Bis(2-Chloroaniline)	101-14-4	0.1	µg/L	n.d.	n.d.	Not Detected	Not Detected						-
4,4'-Diaminodiphenylmethane	101-77-9	0.1	µg/L	n.d.	n.d.	Not Detected	Not Detected						-
4,4'-Oxydianiline	101-80-4	0.1	µg/L	n.d.	n.d.	Not Detected	Not Detected						-
p-Chloroaniline	106-47-8	0.1	µg/L	n.d.	0.5	Not Detected	Detected						-
3,3'-Dimethoxybenzidine	119-90-4	0.1	µg/L	n.d.	n.d.	Not Detected	Not Detected						-
3,3'-Dimethylbenzidine	119-93-7	0.1	µg/L	n.d.	n.d.	Not Detected	Not Detected						-
p-Cresidine	120-71-8	0.1	µg/L	n.d.	n.d.	Not Detected	Not Detected						-
2,4,5-Trimethylaniline	137-17-7	0.1	µg/L	n.d.	n.d.	Not Detected	Not Detected						-
4,4'-Thiodianiline	139-65-1	0.1	µg/L	n.d.	n.d.	Not Detected	Not Detected						-

TEST RESULTS

Factory Name: ZHEJIANG MIZUDA TEXTILE PRINTING & DYEING CO.,LTD.  
Factory Address: NO.288 TIANZIWEI ROAD, WUXING, HUZHOU, ZHEJIANG

Items	CAS No.	Reporting Limit	Units	Sample ID		Date of Sampling		Sampling Location	Raw wastewater collection tank	Factory Performances	*Local Requirements
				52105256162501-01	52105256162501-02	15-04-2021	15-04-2021				
				Sampling Start Time	11:50	11:30					
				Sampling End Time	12:00	17:50					
				Date of Sample Received	16-04-2021	16-04-2021					
				Incoming Water	Raw Waste Water(Discharged Waste Water)	Incoming Water	Raw Waste Water(Discharged Waste Water)	Discharged Waste Water			
p-Aminoazobenzene	60-09-3	0.1	µg/L	n.d.	n.d.	Not Detected	Not Detected	-			
2,4-Diaminoanisole	615-05-4	0.1	µg/L	n.d.	n.d.	Not Detected	Not Detected	-			
3,3'-Dimethyl-4,4'-diaminodiphenylmethane	838-88-0	0.1	µg/L	n.d.	n.d.	Not Detected	Not Detected	-			
2,6-Xylidine	87-62-7	0.1	µg/L	n.d.	n.d.	Not Detected	Not Detected	-			
o-Anisidine	90-04-0	0.1	µg/L	n.d.	n.d.	Not Detected	Not Detected	-			
2-Naphthylamine	91-59-8	0.1	µg/L	n.d.	n.d.	Not Detected	Not Detected	-			
3,3'-Dichlorobenzidine	91-94-1	0.1	µg/L	n.d.	n.d.	Not Detected	Not Detected	-			
4-Aminodiphenyl	92-67-1	0.1	µg/L	n.d.	n.d.	Not Detected	Not Detected	-			
Benzidine	92-87-5	0.1	µg/L	n.d.	n.d.	Not Detected	Not Detected	-			
o-Toluidine	95-53-4	0.1	µg/L	n.d.	n.d.	Not Detected	Not Detected	-			
2,4-Xylidine	95-68-1	0.1	µg/L	n.d.	n.d.	Not Detected	Not Detected	-			
4-Chloro-o-Toluidine	95-69-2	0.1	µg/L	n.d.	n.d.	Not Detected	Not Detected	-			
2,4-Toluylenediamine	95-80-7	0.1	µg/L	n.d.	n.d.	Not Detected	Not Detected	-			
o-Aminoazotoluene	97-56-3	0.1	µg/L	n.d.	n.d.	Not Detected	Not Detected	-			
2-Amino-4-Nitrotoluene	99-55-8	0.1	µg/L	n.d.	n.d.	Not Detected	Not Detected	-			
<b>Carcinogenic Dyes</b>											
Direct Black 38	1937-37-7	500	µg/L	N/A	n.d.	N/A	Not Detected	-			
Direct Blue 6	2602-46-2	500	µg/L	N/A	n.d.	N/A	Not Detected	-			
Acid Red 26	3761-53-3	500	µg/L	N/A	n.d.	N/A	Not Detected	-			
Basic Red 9	569-61-9	500	µg/L	N/A	n.d.	N/A	Not Detected	-			
Direct Red 28	573-58-0	500	µg/L	N/A	n.d.	N/A	Not Detected	-			
Basic Violet 14	632-99-5	500	µg/L	N/A	n.d.	N/A	Not Detected	-			
Disperse Blue 1	2475-45-8	500	µg/L	N/A	n.d.	N/A	Not Detected	-			
Disperse Blue 3	2475-46-9	500	µg/L	N/A	n.d.	N/A	Not Detected	-			
Basic Blue 26	2580-56-5	500	µg/L	N/A	n.d.	N/A	Not Detected	-			

TEST RESULTS

Factory Name: ZHEJIANG MIZUDA TEXTILE PRINTING & DYEING CO.,LTD.  
Factory Address: NO.288 TIANZIWEI ROAD, WUXING, HUZHOU, ZHEJIANG

Items	CAS No.	Reporting Limit	Units	Sample ID		Date of Sampling		Sampling Location	Sampling Start Time	Sampling End Time	Date of Sample Received	Factory Performances	*Local Requirements
				52105256162501-01	52105256162501-02	15-04-2021	15-04-2021						
				Incoming Water	Raw Waste Water(Discharged Waste Water)	Incoming Water	Raw Waste Water(Discharged Waste Water)						
Basic Green 4 (malachite green chloride) <sup>^</sup>	569-64-2	500	µg/L	N/A	n.d.	N/A	Not Detected	-					
Basic Green 4 (malachite green oxalate) <sup>^</sup>	2437-29-8	500	µg/L	N/A	n.d.	N/A	Not Detected	-					
Basic Green 4 (malachite green)	10309-95-2	500	µg/L	N/A	n.d.	N/A	Not Detected	-					
Disperse Orange 11	82-28-0	500	µg/L	N/A	n.d.	N/A	Not Detected	-					
<b>Disperse Dyes</b>													
Disperse Yellow 1	119-15-3	50	µg/L	N/A	n.d.	N/A	Not Detected	-					
Disperse Blue 102	12222-97-8	50	µg/L	N/A	n.d.	N/A	Not Detected	-					
Disperse Blue 106	12223-01-7	50	µg/L	N/A	n.d.	N/A	Not Detected	-					
Disperse Yellow 39	12236-29-2	50	µg/L	N/A	n.d.	N/A	Not Detected	-					
Disperse Orange 37/59/76	13301-61-6	50	µg/L	N/A	n.d.	N/A	Not Detected	-					
Disperse Brown 1	23355-64-8	50	µg/L	N/A	n.d.	N/A	Not Detected	-					
Disperse Orange 1	2581-69-3	50	µg/L	N/A	n.d.	N/A	Not Detected	-					
Disperse Yellow 3	2832-40-8	50	µg/L	N/A	n.d.	N/A	Not Detected	-					
Disperse Red 11	2872-48-2	50	µg/L	N/A	n.d.	N/A	Not Detected	-					
Disperse Red 1	2872-52-8	50	µg/L	N/A	n.d.	N/A	Not Detected	-					
Disperse Red 17	3179-89-3	50	µg/L	N/A	n.d.	N/A	Not Detected	-					
Disperse Blue 7	3179-90-6	50	µg/L	N/A	n.d.	N/A	Not Detected	-					
Disperse Blue 26	3860-63-7	50	µg/L	N/A	n.d.	N/A	Not Detected	-					
Disperse Yellow 49	54824-37-2	50	µg/L	N/A	n.d.	N/A	Not Detected	-					
Disperse Blue 35	12222-75-2, 56524-77-7	50	µg/L	N/A	n.d.	N/A	Not Detected	-					
Disperse Blue 124	61951-51-7	50	µg/L	N/A	n.d.	N/A	Not Detected	-					
Disperse Yellow 9	6373-73-5	50	µg/L	N/A	n.d.	N/A	Not Detected	-					
Disperse Orange 3	730-40-5	50	µg/L	N/A	n.d.	N/A	Not Detected	-					
<b>Flame Retardants</b>													
Tris(2-chloroethyl) phosphate (TCEP)	115-96-8	5	µg/L	N/A	n.d.	N/A	Not Detected	-					
Decabromodiphenyl ethers (DecaBDE)	1163-19-5	5	µg/L	N/A	n.d.	N/A	Not Detected	-					



TEST RESULTS

Factory Name: ZHEJIANG MIZUDA TEXTILE PRINTING & DYEING CO.,LTD.  
Factory Address: NO.288 TIANZIWEI ROAD, WUXING, HUZHOU, ZHEJIANG

Items	CAS No.	Reporting Limit	Units	Sample ID		Date of Sampling		Sampling Location	Sampling Start Time	Sampling End Time	Date of Sample Received	Factory Performances	*Local Requirements
				52105256162501-01	52105256162501-02	15-04-2021	15-04-2021						
				Incoming Water	Raw Waste Water(Discharged Waste Water)	Incoming Water	Raw Waste Water(Discharged Waste Water)						
Tris(2,3-dibromopropyl) phosphate (TRIS)	126-72-7	5	µg/L	N/A	n.d.	N/A	Not Detected	-					
Pentabromodiphenyl ethers (PentaBDE)	32534-81-9	5	µg/L	N/A	n.d.	N/A	Not Detected	-					
Octabromodiphenyl ethers (OctaBDE)	32536-52-0	5	µg/L	N/A	n.d.	N/A	Not Detected	-					
Bis(2,3-dibromopropyl)phosphate (BIS)	5412-25-9	5	µg/L	N/A	n.d.	N/A	Not Detected	-					
Tris(1-aziridinyl)phosphine oxide (TEPA)	545-55-1	5	µg/L	N/A	n.d.	N/A	Not Detected	-					
Polybrominated biphenyls (PBBs)	59536-65-1	5	µg/L	N/A	n.d.	N/A	Not Detected	-					
Tetrabromobisphenol A (TBBPA)	79-94-7	5	µg/L	N/A	n.d.	N/A	Not Detected	-					
Hexabromocyclododecane (HBCDD)	134237-50-6, 134237-51-7, 134237-52-8, 25637-98-4, 3194-55-6	5	µg/L	N/A	n.d.	N/A	Not Detected	-					
2,2-Bis(bromomethyl)-1,3-propanediol (BBMP)	3296-90-0	5	µg/L	N/A	n.d.	N/A	Not Detected	-					
Tris(1,3-dichloro-2-propyl) phosphate (TDCPP)	13674-87-8	5	µg/L	N/A	n.d.	N/A	Not Detected	-					
Short Chain Chlorinated Paraffins (SCCP, C <sub>10</sub> -C <sub>13</sub> )	85535-84-8	5	µg/L	N/A	n.d.	N/A	Not Detected	-					
<b>Glycols</b>													
Bis(2-methoxyethyl)-ether	111-96-6	50	µg/L	N/A	n.d.	N/A	Not Detected	-					
2-Ethoxyethanol	110-80-5	50	µg/L	N/A	n.d.	N/A	Not Detected	-					
2-Ethoxyethyl acetate	111-15-9	50	µg/L	N/A	n.d.	N/A	Not Detected	-					
Ethylene glycol dimethyl ether	110-71-4	50	µg/L	N/A	n.d.	N/A	Not Detected	-					
2-Methoxyethanol	109-86-4	50	µg/L	N/A	n.d.	N/A	Not Detected	-					
2-Methoxyethylacetate	110-49-6	50	µg/L	N/A	n.d.	N/A	Not Detected	-					
2-Methoxypropylacetate	70657-70-4	50	µg/L	N/A	n.d.	N/A	Not Detected	-					
Triethylene glycol dimethyl ether	112-49-2	50	µg/L	N/A	n.d.	N/A	Not Detected	-					
<b>Halogenated Solvents</b>													
1,2-Dichloroethane	107-06-2	1	µg/L	N/A	n.d.	N/A	Not Detected	-					
Methylene chloride	75-09-2	1	µg/L	N/A	n.d.	N/A	Not Detected	-					
Trichloroethene	79-01-6	1	µg/L	N/A	n.d.	N/A	Not Detected	-					
Tetrachloroethene	127-18-4	1	µg/L	N/A	n.d.	N/A	Not Detected	-					
<b>Organotin Compounds***</b>													

TEST RESULTS

Factory Name: ZHEJIANG MIZUDA TEXTILE PRINTING & DYEING CO.,LTD.  
Factory Address: NO.288 TIANZIWEI ROAD, WUXING, HUZHOU, ZHEJIANG

Items	CAS No.	Reporting Limit	Units	Sample ID		Date of Sampling		Sampling Location	Sampling Start Time	Sampling End Time	Date of Sample Received	Factory Performances	*Local Requirements
				52105256162501-01	52105256162501-02	15-04-2021	15-04-2021						
				Incoming Water	Raw Waste Water(Discharged Waste Water)	Incoming Water	Raw Waste Water(Discharged Waste Water)	Discharged Waste Water					
Mono-, di- and tri-methyltin derivatives	Multiple	0.01	µg/L	n.d.	0.29	Not Detected	Detected	-					
Dimethyltin (DMT)	Multiple	0.01	µg/L	n.d.	0.29	Not Detected	Detected	-					
Mono-, di- and tri-butyltin derivatives	Multiple	0.01	µg/L	n.d.	n.d.	Not Detected	Not Detected	-					
Mono-, di- and tri-phenyltin derivatives	Multiple	0.01	µg/L	n.d.	n.d.	Not Detected	Not Detected	-					
Mono-, di- and tri-octyltin derivatives	Multiple	0.01	µg/L	n.d.	n.d.	Not Detected	Not Detected	-					
<b>Perfluorinated / Polyfluorinated Chemicals (PFCs)</b>													
PFOS	1763-23-1	0.01	µg/L	N/A	n.d.	N/A	Not Detected	-					
PFOA	335-67-1	0.01	µg/L	N/A	n.d.	N/A	Not Detected	-					
PFBS	375-73-5, 59933-66-3, 29420-49-3, 29420-43-3	0.01	µg/L	N/A	n.d.	N/A	Not Detected	-					
PFHxA	307-24-4	0.01	µg/L	N/A	n.d.	N/A	Not Detected	-					
8:2 FTOH	678-39-7	1	µg/L	N/A	n.d.	N/A	Not Detected	-					
6:2 FTOH	647-42-7	1	µg/L	N/A	n.d.	N/A	Not Detected	-					
<b>Phthalates</b>													
Di(2-Ethyl Hexyl) Phthalate (DEHP)	117-81-7	10	µg/L	N/A	n.d.	N/A	Not Detected	-					
Bis(2-methoxyethyl)phthalate (DMEP)	117-82-8	10	µg/L	N/A	n.d.	N/A	Not Detected	-					
Di-N-Octyl Phthalate (DNOP)	117-84-0	10	µg/L	N/A	n.d.	N/A	Not Detected	-					
Di-Iso-Decyl Phthalate (DIDP)	26761-40-0, 68515-49-1	10	µg/L	N/A	n.d.	N/A	Not Detected	-					
Di-Iso-Nonyl Phthalate (DINP)	28553-12-0, 68515-48-0	10	µg/L	N/A	n.d.	N/A	Not Detected	-					
Di-N-Hexyl Phthalate (DNHP)	84-75-3	10	µg/L	N/A	n.d.	N/A	Not Detected	-					
Dibutyl Phthalate (DBP)	84-74-2	10	µg/L	N/A	n.d.	N/A	Not Detected	-					
Benzyl Butyl Phthalate (BBP)	85-68-7	10	µg/L	N/A	n.d.	N/A	Not Detected	-					
Dinonyl phthalate (DNP)	84-76-4	10	µg/L	N/A	n.d.	N/A	Not Detected	-					
Diethyl Phthalate (DEP)	84-66-2	10	µg/L	N/A	n.d.	N/A	Not Detected	-					
Di-N-Propyl Phthalate (DPRP)	131-16-8	10	µg/L	N/A	n.d.	N/A	Not Detected	-					
Di-Iso-Butyl Phthalate (DIBP)	84-69-5	10	µg/L	N/A	n.d.	N/A	Not Detected	-					
Dicyclohexyl Phthalate (DCHP)	84-61-7	10	µg/L	N/A	n.d.	N/A	Not Detected	-					



**TEST RESULTS**

Factory Name: ZHEJIANG MIZUDA TEXTILE PRINTING & DYEING CO.,LTD.  
 Factory Address: NO.288 TIANZIWEI ROAD, WUXING, HUZHOU, ZHEJIANG

Sample ID		52105256162501-01	52105256162501-02	Factory Performances				*Local Requirements
Date of Sampling		15-04-2021	15-04-2021					
Sampling Location		River water intake	Raw wastewater collection tank					
Sampling Start Time		11:50	11:30					
Sampling End Time		12:00	17:50					
Date of Sample Received		16-04-2021	16-04-2021					
Items	CAS No.	Reporting Limit	Units	Incoming Water	Raw Waste Water(Discharged Waste Water)	Incoming Water	Raw Waste Water(Discharged Waste Water)	Discharged Waste Water
p-cresol	106-44-5	1	µg/L	N/A	n.d.	N/A	Not Detected	-
m-cresol	108-39-4	1	µg/L	N/A	n.d.	N/A	Not Detected	-

**Remarks:**

"n.d." = Not Detected

"N/A" = Not Applicable

"-" = Not Required to be Test

^The test result is based on the calculation of selected element(s) and to the worst-case scenario

\*The local wastewater discharge requirement of shared treatment plant is not applicable

\*\*Due to an inaccessible of wastewater discharged point, wastewater flow for discharged wastewater cannot be determined

\*\*\*The specific organotin parameters are listed only when it is detected

^Due to inaccessible of the location of Receiving Water, the measurement of Temp-Receiving Water cannot be determined

1) LOR values have been adjusted accordingly due to matrix interference

\*\*\*\*\*

**TEST PARAMETERS**

Factory Name: ZHEJIANG MIZUDA TEXTILE PRINTING & DYEING CO.,LTD.  
Factory Address: NO.288 TIANZIWEI ROAD, WUXING, HUZHOU, ZHEJIANG

ITEMS	CAS No.	METHODS	ZDHC REQUIREMENTS			Units
			Foundational Limit	Progressive Limit	Aspirational Limit	
<b>Conventional Parameters</b>						
Temperature	-	USEPA 170.1 or GB/T 13195	Δ15 / max.35	Δ10 or 30	Δ5 or 25	°C
TSS	-	USEPA 160.2, APHA 2540D, ISO 11923 or GB/T 11901	50	15	5	mg/L
COD	-	USEPA 410.4, APHA 5220D, ISO 6060 or HJ 828	150	80	40	mg/L
Total Nitrogen (Total-N)	-	USEPA 351.2, APHA 4500P-J, APHA 4500N-C, ISO 5663, ISO 29441, HJ 636	20	10	5	mg/L
pH Value	-	USEPA 150.1, APHA 4500-H+, ISO 10523 or GB/T 6920	6-9	6-9	6-9	-
Colour (436nm; 525nm; 620nm)	-	ISO 7887 (Method B)	7; 5; 3	5; 3; 2	2; 1; 1	m <sup>-1</sup>
BOD (5-day)	-	USEPA 405.1, APHA 5210B, ISO 5815-1 or HJ 505	30	15	5	mg/L
Ammonium Nitrogen (Ammonium-N)	-	USEPA 350.1, APHA 4500NH3-N, ISO 7150, ISO 11732, HJ 535 or HJ 536	10	1	0.5	mg/L
Total Phosphorus (Total-P)	-	USEPA 365.4, APHA 4500P-J, ISO 6878, ISO 11885 or GB/T 11893	3	0.5	0.1	mg/L
AOX	-	USEPA 1650, ISO 9562, HJ/T 83	5	1.0	0.1	mg/L
Oil and Grease	-	USEPA 1664, ISO 9377-2, HJ 637	10	2	0.5	mg/L
Phenol	-	APHA 5530 B, C & D, ISO 14402 or HJ 503	0.5	0.01	0.001	mg/L
Coliform	-	USEPA 9132, ISO 9308 or GB/T 5750.12	400	100	25	Bacteria / 100ml
Persistent Foam	-	N/A	Not visible	Not visible	Not visible	-
<b>Anions</b>						
Cyanide	-	USEPA 335.2, APHA 4500-CN, HJ 484	0.2	0.1	0.05	mg/L
Sulfide	-	APHA 4500-S2-D, ISO 10530 or GB/T 16489	0.5	0.05	0.01	mg/L
Sulfite	-	USEPA 377.1, ISO10304-3 or HJ 84	2	0.5	0.2	mg/L
<b>Metals</b>						
Total Antimony (Sb)	7440-36-0		0.1	0.05	0.01	mg/L
Total Chromium (Cr)	7440-47-3		0.2	0.1	0.05	mg/L
Total Cobalt (Co)	7440-48-4		0.05	0.02	0.01	mg/L
Total Copper (Cu)	7440-50-8		1	0.5	0.25	mg/L
Total Nickel (Ni)	7440-02-0	With reference to USEPA 200.7, USEPA 200.8, USEPA 6010C, USEPA 6020A, ISO 11885, HJ 700 or Acid Digestion followed by ICP or ICP/MS analysis	0.2	0.1	0.05	mg/L
Total Silver (Ag)	7440-22-4		0.1	0.05	0.005	mg/L
Total Zinc (Zn)	7440-66-6		5	1	0.5	mg/L
Total Arsenic (As)	7440-38-2		0.05	0.01	0.005	mg/L
Total Cadmium (Cd)	7440-43-9		0.1	0.05	0.01	mg/L
Hexavalent Chromium (Cr-VI)	7440-47-3, 18540-29-9	With reference to USEPA 218.6, ISO 18412, GB 7467 or Solvent extraction and derivatisation followed by UV/vis analysis	0.05	0.005	0.001	mg/L
Total Lead (Pb)	7439-92-1	With reference to USEPA 200.7, USEPA 200.8, USEPA 6010C, USEPA 6020A, ISO 11885, HJ 700 or Acid Digestion followed by ICP or ICP/MS analysis	0.1	0.05	0.01	mg/L

**TEST PARAMETERS**

Factory Name: ZHEJIANG MIZUDA TEXTILE PRINTING & DYEING CO.,LTD.  
 Factory Address: NO.288 TIANZIWEI ROAD, WUXING, HUZHOU, ZHEJIANG

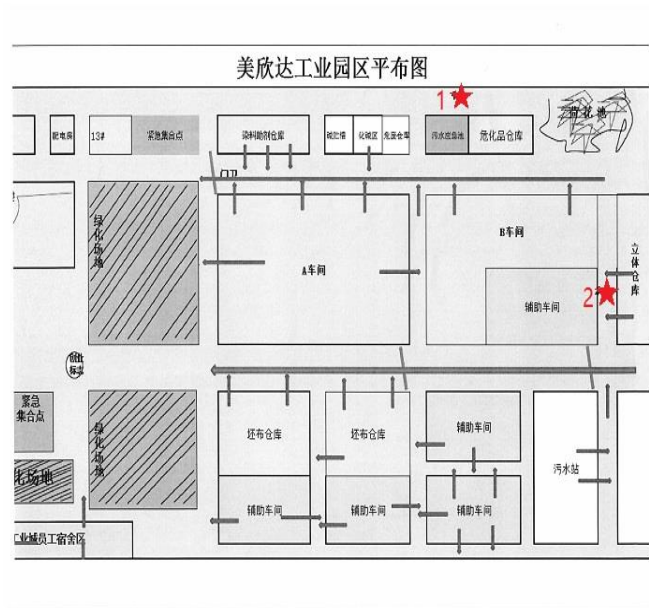
ITEMS	CAS No.	METHODS	ZDHC REQUIREMENTS			Units
			Foundational Limit	Progressive Limit	Aspirational Limit	
Total Mercury (Hg)	7439-97-6		0.01	0.005	0.001	mg/L
<b>Alkylphenols (APs) and Alkylphenol Ethoxylates (APEOs)</b>						
NP / OP		With reference to ISO 18857-2 or ASTM D7065 followed by GC/MS or LC/MS analysis		-		
NPEO / OPEO		With reference to ISO 18254-1, ISO 18857-2 or ASTM D7065 followed by GC/MS or LC/MS analysis				
<b>Chlorobenzenes and Chlorotoluenes (COCs)</b>		With reference to USEPA 8260B, USEPA 8270D or solvent extraction followed by GC/MS analysis		-		
<b>Chlorophenols</b>		With reference to USEPA 8270D, ISO 14154 or solvent extraction and derivatisation with KOH, acetic anhydride followed by GC/MS analysis.		-		
<b>Azo Dyes</b>		With reference to USEPA 8270D, EN 14362-1, EN 14362-3 or Solvent extraction with sodium dithionite reduction followed by GC/MS and HPLC analysis.		-		
<b>Carcinogenic Dyes</b>		Solvent extraction followed by LC/MS analysis.		-		
<b>Disperse Dyes</b>		Solvent extraction followed by LC/MS analysis.		-		
<b>Flame Retardants</b>		With reference to USEPA 527, USEPA 8270, USEPA 8321B, ISO 22032 or solvent extraction followed by GC/MS or LC/MS analysis		-		
<b>Glycols</b>		With reference to USEPA 8270D or solvent extraction followed by GC/MS or LC/MS analysis		-		
<b>Halogenated Solvents</b>		With reference to USEPA 8260B, Purge&Trap, Head-space or Solvent extraction followed by GC/MS analysis		-		
<b>Organotin Compounds</b>		With reference to ISO17353 and derivatisation with sodium diethyl dithiocarbamate followed by GC/MS analysis.		-		
<b>Perfluorinated / Polyfluorinated Chemicals (PFCs)</b>						
FTOHs		With reference to DIN38407-42 or CEN/TS 15968 and derivatisation with acetic anhydride followed by GC/MS analysis.		-		
Others		With reference to DIN38407-42 or CEN/TS 15968 and followed by LCMS or LC/MS/MS analysis				
<b>Phthalates</b>		With reference to USEPA 8270D, ISO 18856, or solvent extraction followed by GC/MS analysis		-		
<b>Polycyclic Aromatic Hydrocarbons (PAHs)</b>		With reference to USEPA 8270, DIN 38407-39 or solvent extraction followed by GC/MS analysis		-		
<b>Volatile Organic Compounds (VOCs)</b>		With reference to USEPA 8260B, ISO 11423-1, Purge&Trap, Head-space or Solvent extraction followed by GC/MS analysis		-		

\*\*\*\*\*

### PIPING PLAN

Factory Name: ZHEJIANG MIZUDA TEXTILE PRINTING & DYEING CO.,LTD.

Factory Address: NO.288 TIANZIWEI ROAD, WUXING, HUZHOU, ZHEJIANG



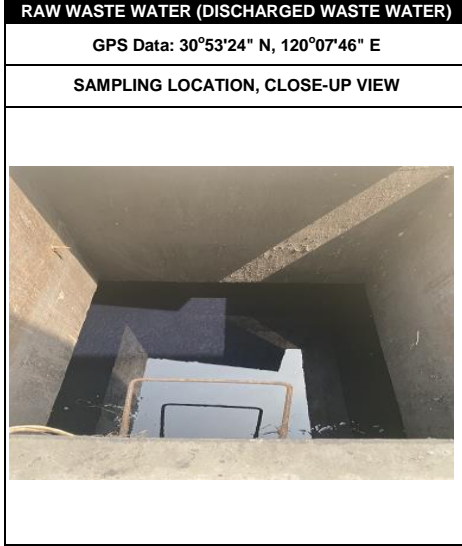
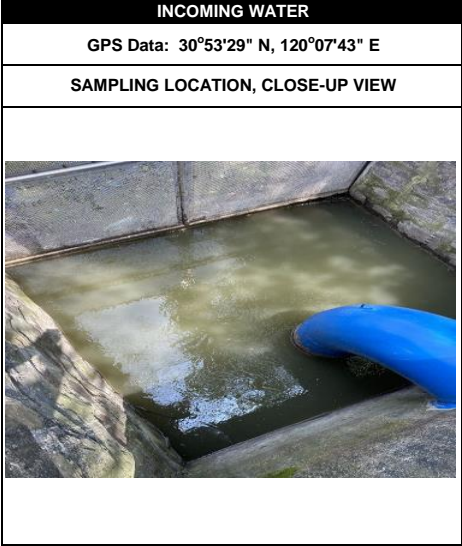
Remark:

1. Incoming water
2. Raw Waste Water(Discharged Waste Water)

\*\*\*\*\*

**SAMPLING PHOTOS**

Factory Name: ZHEJIANG MIZUDA TEXTILE PRINTING & DYEING CO.,LTD.  
Factory Address: NO.288 TIANZIWEI ROAD, WUXING, HUZHOU,  
ZHEJIANG



\*\*\*\*\* END OF REPORT \*\*\*\*\*