

TEST REPORT

CLIENT DETAILS

Client Name: SPRINGTEX LIMITED
Client Contact: Allen Liao
Telephone: 17722820057
Email: allen.liao@springtex.net
Address: ROOM 3903-05, TOWER A, XINTIAN CENTRURY BUSINESS CENTER, FUMIN ROAD, FUTIAN DISTRICT, SHENZHEN, CHINA518017

LABORATORY DETAILS

SGS Affiliate: SGS-CSTC Ltd.
SGS Contact: Amei Xu
Telephone: +86(021)60645461
Email: Amei.Xu@sgs.com
Address: The 4th Building, No.889, Yishan Road, Xuhui District, Shanghai, China

FACTORY DETAILS

Factory Name: Taizhou Youcheng Dyeing & Finishing Co.,Ltd
Factory Contact: Chen Yang
Telephone: 13809018465
Email: 13809018465@126.com
Address: No.69 YANGZHOU ROAD, ECONOMIC DEVELOPMENT ZONE, JIANGYAN, JIANGSU PROVINCE
Types of Mills: (2) Yarn Dyeing, Bleaching (9) Washing (3) Fabric Dyeing, Finishing, Washing (10) Packing, Warehouse
Discharge Destination: To Centralized Waste Water Treatment Plant
Name of Municipal/Centralized ETP: Jiangyan City Sewage Treatment Plant
Address of Municipal/Centralized ETP: Shanghai Road, Jiangyan District, Taizhou City

SAMPLE AND TESTING DETAILS

Sampling Country: SGS China SL
ZDHC Sampler's Certification No.: 8F146507051
Sampling Date: 08-04-2021
Sample Received Date: 10-04-2021
Test Performing Period: 10-04-2021 - 26-04-2021
No. of Samples: Water (2)
Sample Descriptions: 1) Raw Wastewater (6-hour Composite)
2) Discharged Wastewater (6-hour Composite)
Sample Volume: 1) Raw Wastewater 8L
2) Discharged Wastewater 20L
Testing Institute: SGS China SH Lab
Discharge Method: Indirect Discharge

OVERALL RESULTS

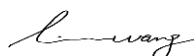
	Raw Waste Water	Discharged Waste Water
Conventional Parameters / Anion / Metals:	Fulfill Aspirational Limit	Please refer to the information in TEST RESULTS
MRLS Parameters:	Detected	Detected

REMARKS

1. This test document cannot be reproduced in any way, except in full content, without prior approval in writing by the laboratory.
2. The results shown in this test report refer only to the sampling and the sample(s) tested unless otherwise stated.
3. For indirect discharge, factory performance against ZDHC requirements for conventional parameters, anions and metals for Discharged Waste Water are for reference only. Actual factory performance on Discharged Waste Water should be compared with the discharged license of the factory.

Signed for and on behalf of

SGS-CSTC Standards Technical Services (Shanghai) Co., Ltd Testing Center



Linda Wang
Chemical Manager

RESULT SUMMARY

Factory Name: Taizhou Youcheng Dyeing & Finishing Co.,Ltd
Factory Address:No.69 YANGZHOU ROAD, ECONOMIC DEVELOPMENT ZONE, JIANGYAN, JIANGSU PROVINCE

TEST ITEMS	Raw Waste Water	Discharged Waste Water
Conventional Parameters	-	Please refer to the information in TEST RESULTS
Anions	-	X
Metals	O	O
Alkylphenols (APs) and Alkylphenol Ethoxylates (APEOs)	X	O
Chlorobenzenes and Chlorotoluenes (COCs)	O	O
Chlorophenols	O	O
Azo dyes	O	O
Carcinogenic dyes	O	O
Disperse dyes	O	O
Flame retardants	O	O
Glycols	O	O
Halogenated solvents	O	O
Organotin Compounds	O	O
Perfluorinated / Polyfluorinated Chemicals (PFCs)	O	X
Phthalates	O	O
Polycyclic Aromatic Hydrocarbons (PAHs)	O	O
Volatile Organic Compounds (VOCs)	O	O

Note:

X - Detected

O - Not Detected

N/A - Not Tested

TEST RESULTS

Factory Name: Taizhou Youcheng Dyeing & Finishing Co.,Ltd
Factory Address:No.69 YANGZHOU ROAD, ECONOMIC DEVELOPMENT ZONE, JIANGYAN, JIANGSU PROVINCE

		Sample ID		Date of Sampling		Sampling Location		Sampling Start Time		Sampling End Time		Date of Sample Received		Factory Performances (Refer to Remarks in cover page)	*Local Requirements		
		52105255674	201-02	52105255674	201-01			08-04-2021	08-04-2021			10:35	10:45				
				Raw wastewater collection tank									Discharged wastewater outlet				
Items	CAS No.	Reporting Limit	Units	Raw Waste Water	Discharged Waste Water	Raw Waste Water	Discharged Waste Water	Discharged Waste Water									
Sulfite	-	0.2	mg/L	-	n.d.(<2.0 mg/L) ¹	-	Fulfill Foundational Limit	N/A									
Metals																	
Total Antimony (Sb) [#]	7440-36-0	0.01	mg/L	n.d.	n.d.	Fulfill Aspirational Limit	Fulfill Aspirational Limit	N/A									
Total Chromium (Cr)	7440-47-3	0.05	mg/L	n.d.	n.d.	Fulfill Aspirational Limit	Fulfill Aspirational Limit	N/A									
Total Cobalt (Co)	7440-48-4	0.01	mg/L	n.d.	n.d.	Fulfill Aspirational Limit	Fulfill Aspirational Limit	N/A									
Total Copper (Cu)	7440-50-8	0.25	mg/L	n.d.	n.d.	Fulfill Aspirational Limit	Fulfill Aspirational Limit	N/A									
Total Nickel (Ni)	7440-02-0	0.05	mg/L	n.d.	n.d.	Fulfill Aspirational Limit	Fulfill Aspirational Limit	N/A									
Total Silver (Ag)	7440-22-4	0.005	mg/L	n.d.	n.d.	Fulfill Aspirational Limit	Fulfill Aspirational Limit	N/A									
Total Zinc (Zn)	7440-66-6	0.5	mg/L	n.d.	n.d.	Fulfill Aspirational Limit	Fulfill Aspirational Limit	N/A									
Total Arsenic (As)	7440-38-2	0.005	mg/L	n.d.	n.d.	Fulfill Aspirational Limit	Fulfill Aspirational Limit	N/A									
Total Cadmium (Cd)	7440-43-9	0.01	mg/L	n.d.	n.d.	Fulfill Aspirational Limit	Fulfill Aspirational Limit	N/A									
Hexavalent Chromium (Cr-VI)	7440-47-3, 18540-29-9	0.001	mg/L	n.d.	n.d.	Fulfill Aspirational Limit	Fulfill Aspirational Limit	N/A									
Total Lead (Pb)	7439-92-1	0.01	mg/L	n.d.	n.d.	Fulfill Aspirational Limit	Fulfill Aspirational Limit	N/A									
Total Mercury (Hg)	7439-97-6	0.001	mg/L	n.d.	n.d.	Fulfill Aspirational Limit	Fulfill Aspirational Limit	N/A									
Alkylphenols (APs) & Alkylphenol Ethoxylates (APEOs)																	
Nonylphenol (NP), mixed isomers	Multiple, including 104-40-5, 11066-49-2, 25154-52-3, 84852-15-3, 90481-04-2, 1173019-62-9	5	µg/L	n.d.	n.d.	Not Detected	Not Detected	-									
Octylphenol (OP), mixed isomers	Multiple, including 140-66-9, 1806-26-4, 27193-28-8	5	µg/L	n.d.	n.d.	Not Detected	Not Detected	-									
Octylphenol ethoxylates (OPEO)	Multiple, including 9002-93-1, 9036-19-5, 68987-90-6	5	µg/L	22	n.d.	Detected	Not Detected	-									
Nonylphenol ethoxylates (NPEO)	Multiple, including 9016-45-9, 26027-38-3, 37205-87-1, 68412-54-4, 127087-87-0	5	µg/L	n.d.	n.d.	Not Detected	Not Detected	-									
Chlorobenzenes & Chlorotoluenes (COCs)																	
Monochlorobenzenes	108-90-7	0.2	µg/L	n.d.	n.d.	Not Detected	Not Detected	-									
1,2-Dichlorobenzene	95-50-1	0.2	µg/L	n.d.	n.d.	Not Detected	Not Detected	-									
1,3-Dichlorobenzene	541-73-1	0.2	µg/L	n.d.	n.d.	Not Detected	Not Detected	-									

TEST RESULTS

Factory Name: Taizhou Youcheng Dyeing & Finishing Co.,Ltd
 Factory Address:No.69 YANGZHOU ROAD, ECONOMIC DEVELOPMENT ZONE, JIANGYAN,
 JIANGSU PROVINCE

Items	CAS No.	Reporting Limit	Units	Raw Waste Water	Discharged Waste Water	Factory Performances (Refer to Remarks in cover page)		*Local Requirements
						Raw Waste Water	Discharged Waste Water	
				Sample ID	52105255674 201-02	52105255674 201-01		
				Date of Sampling	08-04-2021	08-04-2021		
				Sampling Location	Raw wastewater collection tank	Discharged wastewater outlet		
				Sampling Start Time	10:35	10:45		
				Sampling End Time	16:40	16:50		
				Date of Sample Received	10-04-2021	10-04-2021		
1,4-Dichlorobenzene	106-46-7	0.2	µg/L	n.d.	n.d.	Not Detected	Not Detected	-
1,2,3-Trichlorobenzene	87-61-6	0.2	µg/L	n.d.	n.d.	Not Detected	Not Detected	-
1,2,4-Trichlorobenzene	120-82-1	0.2	µg/L	n.d.	n.d.	Not Detected	Not Detected	-
1,3,5-Trichlorobenzene	108-70-3	0.2	µg/L	n.d.	n.d.	Not Detected	Not Detected	-
1,2,3,4-Tetrachlorobenzene	634-66-2	0.2	µg/L	n.d.	n.d.	Not Detected	Not Detected	-
1,2,3,5-Tetrachlorobenzene	634-90-2	0.2	µg/L	n.d.	n.d.	Not Detected	Not Detected	-
1,2,4,5-Tetrachlorobenzene	95-94-3	0.2	µg/L	n.d.	n.d.	Not Detected	Not Detected	-
Pentachlorobenzene	608-93-5	0.2	µg/L	n.d.	n.d.	Not Detected	Not Detected	-
Hexachlorobenzene	118-74-1	0.2	µg/L	n.d.	n.d.	Not Detected	Not Detected	-
2-Chlorotoluene	95-49-8	0.2	µg/L	n.d.	n.d.	Not Detected	Not Detected	-
3-Chlorotoluene	108-41-8	0.2	µg/L	n.d.	n.d.	Not Detected	Not Detected	-
4-Chlorotoluene	106-43-4	0.2	µg/L	n.d.	n.d.	Not Detected	Not Detected	-
2,3-Dichlorotoluene	32768-54-0	0.2	µg/L	n.d.	n.d.	Not Detected	Not Detected	-
2,4-Dichlorotoluene	95-73-8	0.2	µg/L	n.d.	n.d.	Not Detected	Not Detected	-
2,5-Dichlorotoluene	19398-61-9	0.2	µg/L	n.d.	n.d.	Not Detected	Not Detected	-
2,6-Dichlorotoluene	118-69-4	0.2	µg/L	n.d.	n.d.	Not Detected	Not Detected	-
3,4-Dichlorotoluene	95-75-0	0.2	µg/L	n.d.	n.d.	Not Detected	Not Detected	-
3,5-Dichlorotoluene	25186-47-4	0.2	µg/L	n.d.	n.d.	Not Detected	Not Detected	-
2,3,4-Trichlorotoluene	7359-72-0	0.2	µg/L	n.d.	n.d.	Not Detected	Not Detected	-
2,3,6-Trichlorotoluene	2077-46-5	0.2	µg/L	n.d.	n.d.	Not Detected	Not Detected	-
2,4,5-Trichlorotoluene	6639-30-1	0.2	µg/L	n.d.	n.d.	Not Detected	Not Detected	-

TEST RESULTS

Factory Name: Taizhou Youcheng Dyeing & Finishing Co.,Ltd
Factory Address:No.69 YANGZHOU ROAD, ECONOMIC DEVELOPMENT ZONE, JIANGYAN, JIANGSU PROVINCE

Items	CAS No.	Reporting Limit	Units	Raw Waste Water	Discharged Waste Water	Factory Performances (Refer to Remarks in cover page)		*Local Requirements
						Raw Waste Water	Discharged Waste Water	
				Sample ID	52105255674 201-02	52105255674 201-01		
				Date of Sampling	08-04-2021	08-04-2021		
				Sampling Location	Raw wastewater collection tank	Discharged wastewater outlet		
				Sampling Start Time	10:35	10:45		
				Sampling End Time	16:40	16:50		
				Date of Sample Received	10-04-2021	10-04-2021		
2,4,6-Trichlorotoluene	23749-65-7	0.2	µg/L	n.d.	n.d.	Not Detected	Not Detected	-
3,4,5-Trichlorotoluene	21472-86-6	0.2	µg/L	n.d.	n.d.	Not Detected	Not Detected	-
2,3,4,5-Tetrachlorotoluene	76057-12-0	0.2	µg/L	n.d.	n.d.	Not Detected	Not Detected	-
2,3,5,6-Tetrachlorotoluene	29733-70-8	0.2	µg/L	n.d.	n.d.	Not Detected	Not Detected	-
2,3,4,6-Tetrachlorotoluene	875-40-1	0.2	µg/L	n.d.	n.d.	Not Detected	Not Detected	-
Pentachlorotoluene	877-11-2	0.2	µg/L	n.d.	n.d.	Not Detected	Not Detected	-
Chlorophenols								
2-Chlorophenol	95-57-8	0.5	µg/L	n.d.	n.d.	Not Detected	Not Detected	-
3-Chlorophenol	108-43-0	0.5	µg/L	n.d.	n.d.	Not Detected	Not Detected	-
4-Chlorophenol	106-48-9	0.5	µg/L	n.d.	n.d.	Not Detected	Not Detected	-
2,3-Dichlorophenol	576-24-9	0.5	µg/L	n.d.	n.d.	Not Detected	Not Detected	-
2,4-Dichlorophenol	120-83-2	0.5	µg/L	n.d.	n.d.	Not Detected	Not Detected	-
2,5-Dichlorophenol	583-78-8	0.5	µg/L	n.d.	n.d.	Not Detected	Not Detected	-
2,6-Dichlorophenol	87-65-0	0.5	µg/L	n.d.	n.d.	Not Detected	Not Detected	-
3,4-Dichlorophenol	95-77-2	0.5	µg/L	n.d.	n.d.	Not Detected	Not Detected	-
3,5-Dichlorophenol	591-35-5	0.5	µg/L	n.d.	n.d.	Not Detected	Not Detected	-
2,3,4-Trichlorophenol	15950-66-0	0.5	µg/L	n.d.	n.d.	Not Detected	Not Detected	-
2,3,5-Trichlorophenol	933-78-8	0.5	µg/L	n.d.	n.d.	Not Detected	Not Detected	-
2,3,6-Trichlorophenol	933-75-5	0.5	µg/L	n.d.	n.d.	Not Detected	Not Detected	-
2,4,5-Trichlorophenol	95-95-4	0.5	µg/L	n.d.	n.d.	Not Detected	Not Detected	-
2,4,6-Trichlorophenol	88-06-2	0.5	µg/L	n.d.	n.d.	Not Detected	Not Detected	-
3,4,5-Trichlorophenol	609-19-8	0.5	µg/L	n.d.	n.d.	Not Detected	Not Detected	-

TEST RESULTS

Factory Name: Taizhou Youcheng Dyeing & Finishing Co.,Ltd
Factory Address:No.69 YANGZHOU ROAD, ECONOMIC DEVELOPMENT ZONE, JIANGYAN, JIANGSU PROVINCE

Items	CAS No.	Reporting Limit	Units	Raw Waste Water	Discharged Waste Water	Factory Performances (Refer to Remarks in cover page)		*Local Requirements
						Raw Waste Water	Discharged Waste Water	
				Sample ID	52105255674 201-02	52105255674 201-01		
				Date of Sampling	08-04-2021	08-04-2021		
				Sampling Location	Raw wastewater collection tank	Discharged wastewater outlet		
				Sampling Start Time	10:35	10:45		
				Sampling End Time	16:40	16:50		
				Date of Sample Received	10-04-2021	10-04-2021		
2,3,4,5-Tetrachlorophenol	4901-51-3	0.5	µg/L	n.d.	n.d.	Not Detected	Not Detected	-
2,3,4,6-Tetrachlorophenol	58-90-2	0.5	µg/L	n.d.	n.d.	Not Detected	Not Detected	-
2,3,5,6-Tetrachlorophenol	935-95-5	0.5	µg/L	n.d.	n.d.	Not Detected	Not Detected	-
Pentachlorophenol	87-86-5	0.5	µg/L	n.d.	n.d.	Not Detected	Not Detected	-
Azo Dyes								
4,4'-Methylene-Bis(2-Chloroaniline)	101-14-4	0.1	µg/L	n.d.	n.d.	Not Detected	Not Detected	-
4,4'-Diaminodiphenylmethane	101-77-9	0.1	µg/L	n.d.	n.d.	Not Detected	Not Detected	-
4,4'-Oxydianiline	101-80-4	0.1	µg/L	n.d.	n.d.	Not Detected	Not Detected	-
p-Chloroaniline	106-47-8	0.1	µg/L	n.d.	n.d.	Not Detected	Not Detected	-
3,3'-Dimethoxybenzidine	119-90-4	0.1	µg/L	n.d.	n.d.	Not Detected	Not Detected	-
3,3'-Dimethylbenzidine	119-93-7	0.1	µg/L	n.d.	n.d.	Not Detected	Not Detected	-
p-Cresidine	120-71-8	0.1	µg/L	n.d.	n.d.	Not Detected	Not Detected	-
2,4,5-Trimethylaniline	137-17-7	0.1	µg/L	n.d.	n.d.	Not Detected	Not Detected	-
4,4'-Thiodianiline	139-65-1	0.1	µg/L	n.d.	n.d.	Not Detected	Not Detected	-
p-Aminoazobenzene	60-09-3	0.1	µg/L	n.d.	n.d.	Not Detected	Not Detected	-
2,4-Diaminoanisole	615-05-4	0.1	µg/L	n.d.	n.d.	Not Detected	Not Detected	-
3,3'-Dimethyl-4,4'-diaminodiphenylmethane	838-88-0	0.1	µg/L	n.d.	n.d.	Not Detected	Not Detected	-
2,6-Xylidine	87-62-7	0.1	µg/L	n.d.	n.d.	Not Detected	Not Detected	-
o-Anisidine	90-04-0	0.1	µg/L	n.d.	n.d.	Not Detected	Not Detected	-
2-Naphthylamine	91-59-8	0.1	µg/L	n.d.	n.d.	Not Detected	Not Detected	-
3,3'-Dichlorobenzidine	91-94-1	0.1	µg/L	n.d.	n.d.	Not Detected	Not Detected	-
4-Aminodiphenyl	92-67-1	0.1	µg/L	n.d.	n.d.	Not Detected	Not Detected	-

TEST RESULTS

Factory Name: Taizhou Youcheng Dyeing & Finishing Co.,Ltd
 Factory Address:No.69 YANGZHOU ROAD, ECONOMIC DEVELOPMENT ZONE, JIANGYAN,
 JIANGSU PROVINCE

	Sample ID		52105255674	52105255674	Factory Performances (Refer to Remarks in cover page)	*Local Requirements		
	Date of Sampling		201-02	201-01				
	Date of Sampling		08-04-2021	08-04-2021				
	Sampling Location		Raw wastewater collection tank	Discharged wastewater outlet				
	Sampling Start Time		10:35	10:45				
	Sampling End Time		16:40	16:50				
	Date of Sample Received		10-04-2021	10-04-2021				
Items	CAS No.	Reporting Limit	Units	Raw Waste Water	Discharged Waste Water	Raw Waste Water	Discharged Waste Water	Discharged Waste Water
Benzidine	92-87-5	0.1	µg/L	n.d.	n.d.	Not Detected	Not Detected	-
o-Toluidine	95-53-4	0.1	µg/L	n.d.	n.d.	Not Detected	Not Detected	-
2,4-Xylidine	95-68-1	0.1	µg/L	n.d.	n.d.	Not Detected	Not Detected	-
4-Chloro-o-Toluidine	95-69-2	0.1	µg/L	n.d.	n.d.	Not Detected	Not Detected	-
2,4-Toluylenediamine	95-80-7	0.1	µg/L	n.d.	n.d.	Not Detected	Not Detected	-
o-Aminoazotoluene	97-56-3	0.1	µg/L	n.d.	n.d.	Not Detected	Not Detected	-
2-Amino-4-Nitrotoluene	99-55-8	0.1	µg/L	n.d.	n.d.	Not Detected	Not Detected	-
Carcinogenic Dyes								
Direct Black 38	1937-37-7	500	µg/L	n.d.	n.d.	Not Detected	Not Detected	-
Direct Blue 6	2602-46-2	500	µg/L	n.d.	n.d.	Not Detected	Not Detected	-
Acid Red 26	3761-53-3	500	µg/L	n.d.	n.d.	Not Detected	Not Detected	-
Basic Red 9	569-61-9	500	µg/L	n.d.	n.d.	Not Detected	Not Detected	-
Direct Red 28	573-58-0	500	µg/L	n.d.	n.d.	Not Detected	Not Detected	-
Basic Violet 14	632-99-5	500	µg/L	n.d.	n.d.	Not Detected	Not Detected	-
Disperse Blue 1	2475-45-8	500	µg/L	n.d.	n.d.	Not Detected	Not Detected	-
Disperse Blue 3	2475-46-9	500	µg/L	n.d.	n.d.	Not Detected	Not Detected	-
Basic Blue 26	2580-56-5	500	µg/L	n.d.	n.d.	Not Detected	Not Detected	-
Basic Green 4 (malachite green chloride)^	569-64-2	500	µg/L	n.d.	n.d.	Not Detected	Not Detected	-
Basic Green 4 (malachite green oxalate)^	2437-29-8	500	µg/L	n.d.	n.d.	Not Detected	Not Detected	-
Basic Green 4 (malachite green)	10309-95-2	500	µg/L	n.d.	n.d.	Not Detected	Not Detected	-
Disperse Orange 11	82-28-0	500	µg/L	n.d.	n.d.	Not Detected	Not Detected	-
Disperse Dyes								

TEST RESULTS

Factory Name: Taizhou Youcheng Dyeing & Finishing Co.,Ltd
Factory Address:No.69 YANGZHOU ROAD, ECONOMIC DEVELOPMENT ZONE, JIANGYAN, JIANGSU PROVINCE

Items	CAS No.	Reporting Limit	Units	Raw Waste Water	Discharged Waste Water	Raw Waste Water	Discharged Waste Water	Discharged Waste Water	
				Sample ID	52105255674 201-02	52105255674 201-01	Factory Performances (Refer to Remarks in cover page)		*Local Requirements
				Date of Sampling	08-04-2021	08-04-2021			
				Sampling Location	Raw wastewater collection tank	Discharged wastewater outlet			
				Sampling Start Time	10:35	10:45			
				Sampling End Time	16:40	16:50			
				Date of Sample Received	10-04-2021	10-04-2021			
Disperse Yellow 1	119-15-3	50	µg/L	n.d.	n.d.	Not Detected	Not Detected	-	
Disperse Blue 102	12222-97-8	50	µg/L	n.d.	n.d.	Not Detected	Not Detected	-	
Disperse Blue 106	12223-01-7	50	µg/L	n.d.	n.d.	Not Detected	Not Detected	-	
Disperse Yellow 39	12236-29-2	50	µg/L	n.d.	n.d.	Not Detected	Not Detected	-	
Disperse Orange 37/59/76	13301-61-6	50	µg/L	n.d.	n.d.	Not Detected	Not Detected	-	
Disperse Brown 1	23355-64-8	50	µg/L	n.d.	n.d.	Not Detected	Not Detected	-	
Disperse Orange 1	2581-69-3	50	µg/L	n.d.	n.d.	Not Detected	Not Detected	-	
Disperse Yellow 3	2832-40-8	50	µg/L	n.d.	n.d.	Not Detected	Not Detected	-	
Disperse Red 11	2872-48-2	50	µg/L	n.d.	n.d.	Not Detected	Not Detected	-	
Disperse Red 1	2872-52-8	50	µg/L	n.d.	n.d.	Not Detected	Not Detected	-	
Disperse Red 17	3179-89-3	50	µg/L	n.d.	n.d.	Not Detected	Not Detected	-	
Disperse Blue 7	3179-90-6	50	µg/L	n.d.	n.d.	Not Detected	Not Detected	-	
Disperse Blue 26	3860-63-7	50	µg/L	n.d.	n.d.	Not Detected	Not Detected	-	
Disperse Yellow 49	54824-37-2	50	µg/L	n.d.	n.d.	Not Detected	Not Detected	-	
Disperse Blue 35	12222-75-2, 56524-77-7	50	µg/L	n.d.	n.d.	Not Detected	Not Detected	-	
Disperse Blue 124	61951-51-7	50	µg/L	n.d.	n.d.	Not Detected	Not Detected	-	
Disperse Yellow 9	6373-73-5	50	µg/L	n.d.	n.d.	Not Detected	Not Detected	-	
Disperse Orange 3	730-40-5	50	µg/L	n.d.	n.d.	Not Detected	Not Detected	-	
Flame Retardants									
Tris(2-chloroethyl) phosphate (TCEP)	115-96-8	5	µg/L	n.d.	n.d.	Not Detected	Not Detected	-	
Decabromodiphenyl ethers (DecaBDE)	1163-19-5	5	µg/L	n.d.	n.d.	Not Detected	Not Detected	-	
Tris(2,3-dibromopropyl) phosphate (TRIS)	126-72-7	5	µg/L	n.d.	n.d.	Not Detected	Not Detected	-	

TEST RESULTS

Factory Name: Taizhou Youcheng Dyeing & Finishing Co.,Ltd
Factory Address:No.69 YANGZHOU ROAD, ECONOMIC DEVELOPMENT ZONE, JIANGYAN, JIANGSU PROVINCE

Items	CAS No.	Reporting Limit	Units	Raw Waste Water	Discharged Waste Water	Factory Performances (Refer to Remarks in cover page)		*Local Requirements	
						Sample ID	52105255674201-02		52105255674201-01
						Date of Sampling	08-04-2021		08-04-2021
						Sampling Location	Raw wastewater collection tank		Discharged wastewater outlet
						Sampling Start Time	10:35		10:45
						Sampling End Time	16:40		16:50
						Date of Sample Received	10-04-2021		10-04-2021
Raw Waste Water	Discharged Waste Water	Raw Waste Water	Discharged Waste Water	Discharged Waste Water					
Pentabromodiphenyl ethers (PentaBDE)	32534-81-9	5	µg/L	n.d.	n.d.	Not Detected	Not Detected	-	
Octabromodiphenyl ethers (OctaBDE)	32536-52-0	5	µg/L	n.d.	n.d.	Not Detected	Not Detected	-	
Bis(2,3-dibromopropyl)phosphate (BIS)	5412-25-9	5	µg/L	n.d.	n.d.	Not Detected	Not Detected	-	
Tris(1-aziridinyl)phosphine oxide (TEPA)	545-55-1	5	µg/L	n.d.	n.d.	Not Detected	Not Detected	-	
Polybrominated biphenyls (PBBs)	59536-65-1	5	µg/L	n.d.	n.d.	Not Detected	Not Detected	-	
Tetrabromobisphenol A (TBBPA)	79-94-7	5	µg/L	n.d.	n.d.	Not Detected	Not Detected	-	
Hexabromocyclododecane (HBCDD)	134237-50-6, 134237-51-7, 134237-52-8, 25637-99-4, 3194-55-6	5	µg/L	n.d.	n.d.	Not Detected	Not Detected	-	
2,2-Bis(bromomethyl)-1,3-propanediol (BBMP)	3296-90-0	5	µg/L	n.d.	n.d.	Not Detected	Not Detected	-	
Tris(1,3-dichloro-2-propyl)phosphate (TDCPP)	13674-87-8	5	µg/L	n.d.	n.d.	Not Detected	Not Detected	-	
Short Chain Chlorinated Paraffins (SCCP), C ₁₀ -C ₁₃	85535-84-8	5	µg/L	n.d.	n.d.	Not Detected	Not Detected	-	
Glycols									
Bis(2-methoxyethyl)-ether	111-96-6	50	µg/L	n.d.	n.d.	Not Detected	Not Detected	-	
2-Ethoxyethanol	110-80-5	50	µg/L	n.d.	n.d.	Not Detected	Not Detected	-	
2-Ethoxyethyl acetate	111-15-9	50	µg/L	n.d.	n.d.	Not Detected	Not Detected	-	
Ethylene glycol dimethyl ether	110-71-4	50	µg/L	n.d.	n.d.	Not Detected	Not Detected	-	
2-Methoxyethanol	109-86-4	50	µg/L	n.d.	n.d.	Not Detected	Not Detected	-	
2-Methoxyethylacetate	110-49-6	50	µg/L	n.d.	n.d.	Not Detected	Not Detected	-	
2-Methoxypropylacetate	70657-70-4	50	µg/L	n.d.	n.d.	Not Detected	Not Detected	-	
Triethylene glycol dimethyl ether	112-49-2	50	µg/L	n.d.	n.d.	Not Detected	Not Detected	-	
Halogenated Solvents									
1,2-Dichloroethane	107-06-2	1	µg/L	n.d.	n.d.	Not Detected	Not Detected	-	
Methylene chloride	75-09-2	1	µg/L	n.d.	n.d.	Not Detected	Not Detected	-	

TEST RESULTS

Factory Name: Taizhou Youcheng Dyeing & Finishing Co.,Ltd
Factory Address:No.69 YANGZHOU ROAD, ECONOMIC DEVELOPMENT ZONE, JIANGYAN, JIANGSU PROVINCE

Items	CAS No.	Reporting Limit	Units	Sample ID		Date of Sampling		Factory Performances (Refer to Remarks in cover page)	*Local Requirements
				52105255674 201-02	52105255674 201-01	08-04-2021	08-04-2021		
				Sampling Location		Raw wastewater collection tank	Discharged wastewater outlet		
				Sampling Start Time		10:35	10:45		
				Sampling End Time		16:40	16:50		
				Date of Sample Received		10-04-2021	10-04-2021		
				Raw Waste Water	Discharged Waste Water	Raw Waste Water	Discharged Waste Water		
Trichloroethene	79-01-6	1	µg/L	n.d.	n.d.	Not Detected	Not Detected	-	
Tetrachloroethene	127-18-4	1	µg/L	n.d.	n.d.	Not Detected	Not Detected	-	
Organotin Compounds									
Mono-, di- and tri-methyltin derivatives	Multiple	0.01	µg/L	n.d.	n.d.	Not Detected	Not Detected	-	
Monomethyltin (MMT)	Multiple	0.01	µg/L	n.d.	n.d.	Not Detected	Not Detected	-	
Dimethyltin (DMT)	Multiple	0.01	µg/L	n.d.	n.d.	Not Detected	Not Detected	-	
Trimethyltin (TMT)	Multiple	0.01	µg/L	n.d.	n.d.	Not Detected	Not Detected	-	
Mono-, di- and tri-butyltin derivatives	Multiple	0.01	µg/L	n.d.	n.d.	Not Detected	Not Detected	-	
Monobutyltin (MBT)	1118-46-3, 78763-54-9	0.01	µg/L	n.d.	n.d.	Not Detected	Not Detected	-	
Dibutyltin (DBT)	1002-53-5	0.01	µg/L	n.d.	n.d.	Not Detected	Not Detected	-	
Tributyltin (TBT)	56573-85-4	0.01	µg/L	n.d.	n.d.	Not Detected	Not Detected	-	
Mono-, di- and tri-phenyltin derivatives	Multiple	0.01	µg/L	n.d.	n.d.	Not Detected	Not Detected	-	
Monophenyltin (MPHT)	Multiple	0.01	µg/L	n.d.	n.d.	Not Detected	Not Detected	-	
Diphenyltin (DPHT)	Multiple	0.01	µg/L	n.d.	n.d.	Not Detected	Not Detected	-	
Triphenyltin (TPHT)	892-20-6, 668-34-8	0.01	µg/L	n.d.	n.d.	Not Detected	Not Detected	-	
Mono-, di- and tri-octyltin derivatives	Multiple	0.01	µg/L	n.d.	n.d.	Not Detected	Not Detected	-	
Monooctyltin (MOT)	15231-57-9	0.01	µg/L	n.d.	n.d.	Not Detected	Not Detected	-	
Diocetyl tin (DOT)	94410-05-6, 12531-44-4	0.01	µg/L	n.d.	n.d.	Not Detected	Not Detected	-	
Triocetyl tin (TOT)	Multiple	0.01	µg/L	n.d.	n.d.	Not Detected	Not Detected	-	
Perfluorinated / Polyfluorinated Chemicals (PFCs)									
PFOS	1763-23-1	0.01	µg/L	n.d.(<0.05 $\mu\text{g/L}$) ¹	n.d.	Not Detected	Not Detected	-	
PFOA	335-67-1	0.01	µg/L	n.d.(<0.05 $\mu\text{g/L}$) ¹	0.36	Not Detected	Detected	-	

TEST RESULTS

Factory Name: Taizhou Youcheng Dyeing & Finishing Co.,Ltd
Factory Address:No.69 YANGZHOU ROAD, ECONOMIC DEVELOPMENT ZONE, JIANGYAN, JIANGSU PROVINCE

		Sample ID	52105255674 201-02	52105255674 201-01				
		Date of Sampling	08-04-2021	08-04-2021				
		Sampling Location	Raw wastewater collection tank	Discharged wastewater outlet	Factory Performances (Refer to Remarks in cover page)		*Local Requirements	
		Sampling Start Time	10:35	10:45				
		Sampling End Time	16:40	16:50				
		Date of Sample Received	10-04-2021	10-04-2021				
Items	CAS No.	Reporting Limit	Units	Raw Waste Water	Discharged Waste Water	Raw Waste Water	Discharged Waste Water	Discharged Waste Water
PFBS	375-73-5, 59933-86-3, 29420-49-3, 29420-43-3	0.01	µg/L	n.d.(<0.05 µg/L) ¹	n.d.	Not Detected	Not Detected	-
PFHxA	307-24-4	0.01	µg/L	n.d.(<0.05 µg/L) ¹	0.04	Not Detected	Detected	-
8:2 FTOH	678-39-7	1	µg/L	n.d.	n.d.	Not Detected	Not Detected	-
6:2 FTOH	647-42-7	1	µg/L	n.d.	n.d.	Not Detected	Not Detected	-
Phthalates								
Di(2-Ethyl Hexyl) Phthalate (DEHP)	117-81-7	10	µg/L	n.d.	n.d.	Not Detected	Not Detected	-
Bis(2-methoxyethyl)phthalate (DMEP)	117-82-8	10	µg/L	n.d.	n.d.	Not Detected	Not Detected	-
Di-N-Octyl Phthalate (DNOP)	117-84-0	10	µg/L	n.d.	n.d.	Not Detected	Not Detected	-
Di-Iso-Decyl Phthalate (DIDP)	26761-40-0, 68515-49-1	10	µg/L	n.d.	n.d.	Not Detected	Not Detected	-
Di-Iso-Nonyl Phthalate (DINP)	28553-12-0, 68515-48-0	10	µg/L	n.d.	n.d.	Not Detected	Not Detected	-
Di-N-Hexyl Phthalate (DNHP)	84-75-3	10	µg/L	n.d.	n.d.	Not Detected	Not Detected	-
Dibutyl Phthalate (DBP)	84-74-2	10	µg/L	n.d.	n.d.	Not Detected	Not Detected	-
Benzyl Butyl Phthalate (BBP)	85-68-7	10	µg/L	n.d.	n.d.	Not Detected	Not Detected	-
Dinonyl phthalate (DNP)	84-76-4	10	µg/L	n.d.	n.d.	Not Detected	Not Detected	-
Diethyl Phthalate (DEP)	84-66-2	10	µg/L	n.d.	n.d.	Not Detected	Not Detected	-
Di-N-Propyl Phthalate (DPRP)	131-16-8	10	µg/L	n.d.	n.d.	Not Detected	Not Detected	-
Di-Iso-Butyl Phthalate (DIBP)	84-69-5	10	µg/L	n.d.	n.d.	Not Detected	Not Detected	-
Dicyclohexyl Phthalate (DCHP)	84-61-7	10	µg/L	n.d.	n.d.	Not Detected	Not Detected	-
Di-Iso-Octyl Phthalate (DIOP)	27554-26-3	10	µg/L	n.d.	n.d.	Not Detected	Not Detected	-
1,2-Benzenedicarboxylic acid, Di-C7-11 Branched and Linear Alkyl Esters (DHNUP)	68515-42-4	10	µg/L	n.d.	n.d.	Not Detected	Not Detected	-
1,2-Benzenedicarboxylic acid, Di-C6-8 Branched Alkyl Esters, C7-rich (DIHP)	71888-89-6	10	µg/L	n.d.	n.d.	Not Detected	Not Detected	-
Polycyclic Aromatic Hydrocarbons (PAHs)								

TEST RESULTS

Factory Name: Taizhou Youcheng Dyeing & Finishing Co.,Ltd
Factory Address:No.69 YANGZHOU ROAD, ECONOMIC DEVELOPMENT ZONE, JIANGYAN, JIANGSU PROVINCE

Items	CAS No.	Reporting Limit	Units	Sample ID		Factory Performances (Refer to Remarks in cover page)		*Local Requirements		
				52105255674 201-02	52105255674 201-01					
				Date of Sampling					08-04-2021	08-04-2021
				Sampling Location					Raw wastewater collection tank	Discharged wastewater outlet
				Sampling Start Time					10:35	10:45
				Sampling End Time					16:40	16:50
				Date of Sample Received					10-04-2021	10-04-2021
				Raw Waste Water	Discharged Waste Water	Raw Waste Water	Discharged Waste Water	Discharged Waste Water		
Bezo[a]pyrene	50-32-8	1	µg/L	n.d.	n.d.	Not Detected	Not Detected	-		
Anthracene	120-12-7	1	µg/L	n.d.	n.d.	Not Detected	Not Detected	-		
Pyrene	129-00-0	1	µg/L	n.d.	n.d.	Not Detected	Not Detected	-		
Benzo[ghi]perylene	191-24-2	1	µg/L	n.d.	n.d.	Not Detected	Not Detected	-		
Benzo[e]pyrene	192-97-2	1	µg/L	n.d.	n.d.	Not Detected	Not Detected	-		
Indeno[1,2,3-cd]pyrene	193-39-5	1	µg/L	n.d.	n.d.	Not Detected	Not Detected	-		
Benzo[j]fluoranthene	205-82-3	1	µg/L	n.d.	n.d.	Not Detected	Not Detected	-		
Benzo[b]fluoranthene	205-99-2	1	µg/L	n.d.	n.d.	Not Detected	Not Detected	-		
Fluoranthene	206-44-0	1	µg/L	n.d.	n.d.	Not Detected	Not Detected	-		
Benzo[k]fluoranthene	207-08-9	1	µg/L	n.d.	n.d.	Not Detected	Not Detected	-		
Acenaphthylene	208-96-8	1	µg/L	n.d.	n.d.	Not Detected	Not Detected	-		
Chrysene	218-01-9	1	µg/L	n.d.	n.d.	Not Detected	Not Detected	-		
Dibenz[a,h]anthracene	53-70-3	1	µg/L	n.d.	n.d.	Not Detected	Not Detected	-		
Benzo[a]anthracene	56-55-3	1	µg/L	n.d.	n.d.	Not Detected	Not Detected	-		
Acenaphthene	83-32-9	1	µg/L	n.d.	n.d.	Not Detected	Not Detected	-		
Phenanthrene	85-01-8	1	µg/L	n.d.	n.d.	Not Detected	Not Detected	-		
Fluorene	86-73-7	1	µg/L	n.d.	n.d.	Not Detected	Not Detected	-		
Naphthalene	91-20-3	1	µg/L	n.d.	n.d.	Not Detected	Not Detected	-		
Volatile Organic Compounds (VOCs)										
Benzene	71-43-2	1	µg/L	n.d.	n.d.	Not Detected	Not Detected	-		
Xylene	1330-20-7	1	µg/L	n.d.	n.d.	Not Detected	Not Detected	-		
o-cresol	95-48-7	1	µg/L	n.d.	n.d.	Not Detected	Not Detected	-		

TEST RESULTS

Factory Name: Taizhou Youcheng Dyeing & Finishing Co.,Ltd
 Factory Address:No.69 YANGZHOU ROAD, ECONOMIC DEVELOPMENT ZONE, JIANGYAN,
 JIANGSU PROVINCE

Items	CAS No.	Reporting Limit	Units	Raw Waste Water	Discharged Waste Water	Factory Performances (Refer to Remarks in cover page)		*Local Requirements
						Raw Waste Water	Discharged Waste Water	
p-cresol	106-44-5	1	µg/L	n.d.	n.d.	Not Detected	Not Detected	-
m-cresol	108-39-4	1	µg/L	n.d.	n.d.	Not Detected	Not Detected	-

Remarks:

"n.d." = Not Detected

"N/A" = Not Tested

"*" = Not Required to be Test

^The test result is based on the calculation of selected element(s) and to the worst-case scenario

#Data collection only for polyester production

*Please refer to the details of the Local Requirements in the Appendix Section

**Data provided by factory(online monitor system)

△Due to inaccessible of the location of Receiving Water, the measurement of Temp-Receiving Water cannot be determined

1) LOR values have been adjusted accordingly due to matrix interference

TEST PARAMETERS

Factory Name: Taizhou Youcheng Dyeing & Finishing Co.,Ltd

Factory Address:No.69 YANGZHOU ROAD, ECONOMIC DEVELOPMENT ZONE, JIANGYAN, JIANGSU PROVINCE

ITEMS	CAS No.	METHODS	ZDHC REQUIREMENTS			Units
			Foundational Limit	Progressive Limit	Aspirational Limit	
Conventional Parameters						
Temperature	-	USEPA 170.1 or GB/T 13195	Δ15 or max. 35	Δ10 or max. 30	Δ5 or max. 25	°C
TSS	-	USEPA 160.2, APHA 2540D, ISO 11923 or GB/T 11901	50	15	5	mg/L
COD	-	USEPA 410.4, APHA 5220D, ISO 6060 or HJ 828	150	80	40	mg/L
Total Nitrogen (Total-N)	-	USEPA 351.2, APHA 4500P-J, APHA 4500N-C, ISO 5663, ISO 29441, HJ 636 or GB 11891	20	10	5	mg/L
pH Value	-	USEPA 150.1, APHA 4500-H+, ISO 10523 or GB/T 6920	6-9	6-9	6-9	-
Colour (436nm; 525nm; 620nm)	-	ISO 7887 (Method B)	7; 5; 3	5; 3; 2	2; 1; 1	m ⁻¹
Colour	-	GB 11903-1989	-	-	-	-
BOD (5-day)	-	USEPA 405.1, APHA 5210B, ISO 5815-1, EN 1899-1 or HJ 505	30	15	5	mg/L
Ammonium Nitrogen (Ammonium-N)	-	USEPA 350.1, APHA 4500NH ₃ -N, ISO 7150, ISO 11732, HJ 535 or HJ 536	10	1	0.5	mg/L
Total Phosphorus (Total-P)	-	USEPA 365.4, APHA 4500P-J, ISO 6878, ISO 11885 or GB/T 11893	3	0.5	0.1	mg/L
AOX	-	USEPA 1650, ISO 9562, EN ISO 9563 or HJ/T 83-2001	5	1	0.1	mg/L
Oil and Grease	-	USEPA 1664, ISO 9377-2 or HJ 637	10	2	0.5	mg/L
Phenol	-	APHA 5530 B, C & D, ISO 14402 or HJ 503	0.5	0.01	0.001	mg/L
Coliform	-	USEPA 9132, ISO 9308-1 or GB/T 5750.12	400	100	25	Bacteria / 100ml
Persistent Foam	-	N/A	Not visible	Not visible	Not visible	-
Anions						
Cyanide	-	<u>Wastewater:</u> USEPA 335.2, APHA 4500-CN, ISO 6703-1,-2,-3, ISO 14403-1,-2 or HJ 484	0.2	0.1	0.05	mg/L
Sulfide	-	APHA 4500-S2-D, ISO 10530 or GB/T 16489	0.5	0.05	0.01	mg/L
Sulfite	-	USEPA 377.1, ISO10304-3 or HJ 84	2	0.5	0.2	mg/L
Metals						
Total Antimony (Sb)	7440-36-0		0.1	0.05	0.01	mg/L
Total Chromium (Cr)	7440-47-3		0.2	0.1	0.05	mg/L
Total Cobalt (Co)	7440-48-4		0.05	0.02	0.01	mg/L
Total Copper (Cu)	7440-50-8	<u>Wastewater:</u>	1	0.5	0.25	mg/L
Total Nickel (Ni)	7440-02-0	With reference to USEPA 200.7, USEPA 200.8, USEPA 6010C, USEPA 6020A, ISO 11885, ISO 12846, ISO 17852, ISO 18412, GB 7466, GB 7467, GB 7472, GB 7475, GB 11907, HJ 597, HJ 700 or acid digestion followed by ICP or ICP/MS analysis	0.2	0.1	0.05	mg/L
Total Silver (Ag)	7440-22-4		0.1	0.05	0.005	mg/L
Total Zinc (Zn)	7440-66-6		5.0	1.0	0.5	mg/L
Total Arsenic (As)	7440-38-2		0.05	0.01	0.005	mg/L
Total Cadmium (Cd)	7440-43-9		0.1	0.05	0.01	mg/L
Hexavalent Chromium (Cr-VI)	7440-47-3, 18540-29-9	<u>Wastewater:</u> With reference to USEPA 218.6, ISO 18412, GB 7467 or solvent extraction and derivatisation followed by UV/VIS analysis	0.05	0.005	0.001	mg/L

TEST PARAMETERS

Factory Name: Taizhou Youcheng Dyeing & Finishing Co.,Ltd

Factory Address:No.69 YANGZHOU ROAD, ECONOMIC DEVELOPMENT ZONE, JIANGYAN, JIANGSU PROVINCE

ITEMS	CAS No.	METHODS	ZDHC REQUIREMENTS			Units
			Foundational Limit	Progressive Limit	Aspirational Limit	
Total Lead (Pb)	7439-92-1	<u>Wastewater:</u> With reference to USEPA 200.7, USEPA 200.8, USEPA 6010C, USEPA 6020A, ISO 11885, ISO 12846, ISO 17852, ISO 18412, GB 7466, GB 7467, GB 7472, GB 7475, GB 11907, HJ 597, HJ 700 or acid digestion followed by ICP or ICP/MS analysis	0.1	0.05	0.01	mg/L
Total Mercury (Hg)	7439-97-6		0.01	0.005	0.001	mg/L
Alkylphenols (APs) and Alkylphenol Ethoxylates (APEOs)						
NP / OP		<u>Wastewater:</u> With reference to ISO 18857-2 or ASTM D7065 followed by GC/MS or LC/MS(-MS) analysis			-	
NPEO / OPEO		<u>Wastewater:</u> With reference to ISO 18254-1, ISO 18857-2 or ASTM D7065 followed by GC/MS or LC/MS analysis			-	
Chlorobenzenes and Chlorotoluenes (COCs)						
		<u>Wastewater:</u> With reference to USEPA 8260B, USEPA 8270D or solvent extraction followed by GC/MS analysis			-	
Chlorophenols						
		<u>Wastewater:</u> With reference to USEPA 8270D, ISO 14154 or solvent extraction and derivatisation with KOH, acetic anhydride followed by GC/MS analysis			-	
Azo Dyes						
		<u>Wastewater:</u> With reference to USEPA 8270D, EN 14362-1, EN 14362-3 or solvent extraction with sodium dithionite reduction followed by GC/MS or LC/MS analysis			-	
Carcinogenic Dyes						
		<u>Wastewater:</u> Solvent extraction followed by LC/MS analysis			-	
Disperse Dyes						
		<u>Wastewater:</u> Solvent extraction followed by LC/MS analysis			-	
Flame Retardants						
		<u>Wastewater:</u> With reference to USEPA 527, USEPA 8270, USEPA 8321B, ISO 22032 or solvent extraction followed by GC/MS or LC/MS analysis			-	
Glycols						
		<u>Wastewater:</u> With reference to USEPA 8270 or solvent extraction followed by GC/MS or LC/MS analysis			-	
Halogenated Solvents						
		<u>Wastewater:</u> With reference to USEPA 8260B, Purge-and-Trap, Headspace or solvent extraction followed by GC/MS analysis			-	
Organotin Compounds						
		<u>Wastewater:</u> With reference to ISO 17353 and derivatisation with sodium diethyl dithiocarbamate followed by GC/MS analysis			-	
Perfluorinated / Polyfluorinated Chemicals (PFCs)						
FTOHs (Non-ionic)		<u>Wastewater:</u> With reference to DIN38407-42 or CEN/TS 15968 and derivatisation with acetic anhydride followed by GC/MS analysis			-	
Others (Ionic)		<u>Wastewater:</u> With reference to DIN38407-42 or CEN/TS 15968 followed by LCMS or LC/MS(-MS) analysis			-	



TEST PARAMETERS

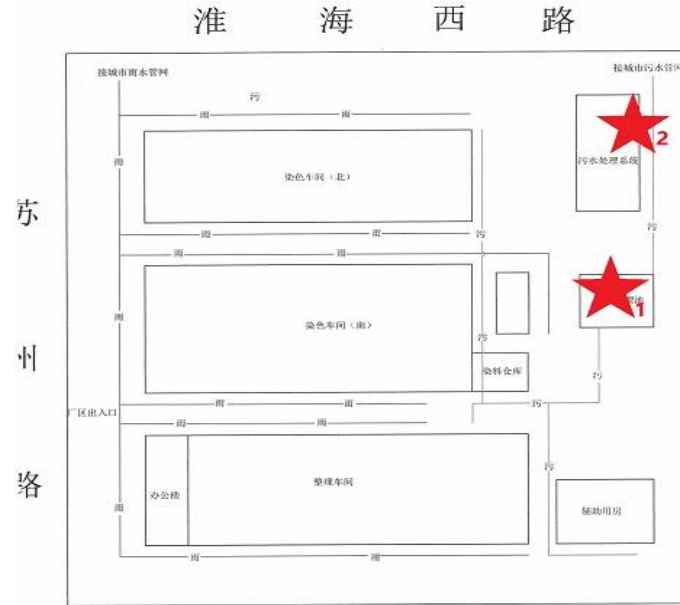
Factory Name: Taizhou Youcheng Dyeing & Finishing Co.,Ltd

Factory Address:No.69 YANGZHOU ROAD, ECONOMIC DEVELOPMENT ZONE, JIANGYAN, JIANGSU PROVINCE

ITEMS	CAS No.	METHODS	ZDHC REQUIREMENTS			Units
			Foundational Limit	Progressive Limit	Aspirational Limit	
Phthalates		Wastewater: With reference to USEPA 8270D, ISO 18856 or solvent extraction followed by GC/MS analysis		-		
Polycyclic Aromatic Hydrocarbons (PAHs)		Wastewater: With reference to USEPA 8270, DIN 38407-39 or solvent extraction followed by GC/MS analysis		-		
Volatile Organic Compounds (VOCs)		Wastewater: With reference to USEPA 8260B, Purge-and-Trap, Headspace or solvent extraction followed by GC/MS analysis		-		

PIPING PLAN

Factory Name: Taizhou Youcheng Dyeing & Finishing Co.,Ltd
Factory Address:No.69 YANGZHOU ROAD, ECONOMIC DEVELOPMENT ZONE,
JIANGYAN, JIANGSU PROVINCE



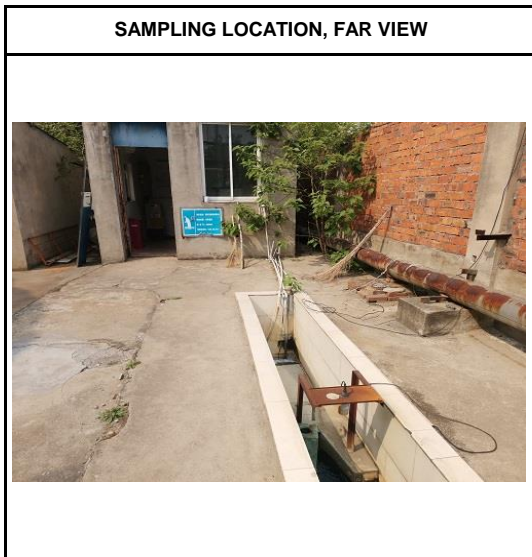
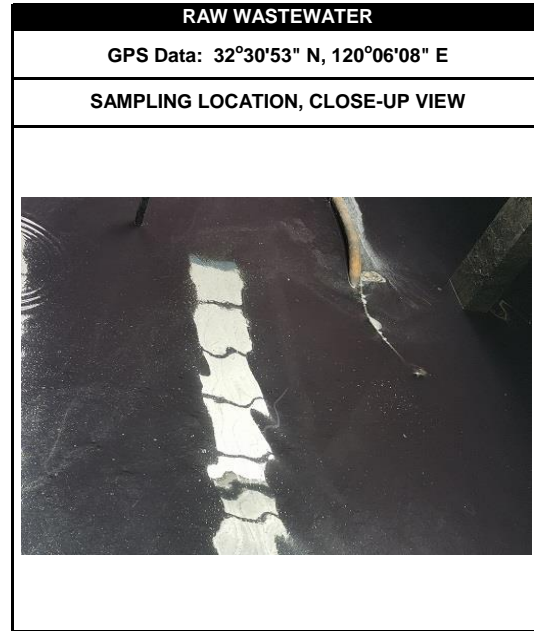
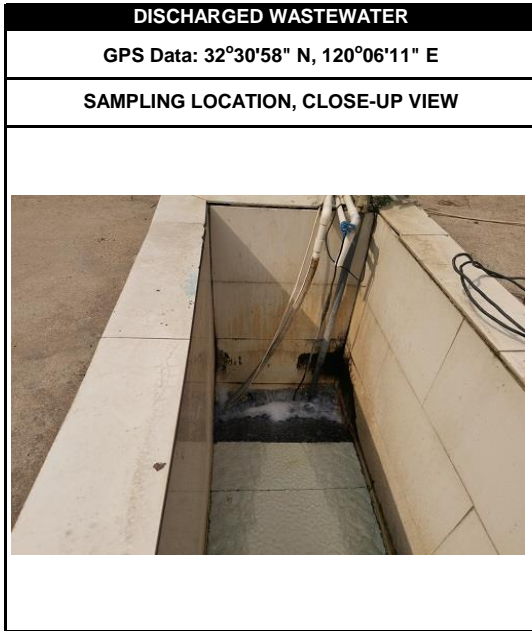
泰州市友成染整有限公司雨污管网分布图

Remark:

1. Raw Wastewater
2. Discharged Wastewater

SAMPLING PHOTOS

Factory Name: Taizhou Youcheng Dyeing & Finishing Co.,Ltd
Factory Address:No.69 YANGZHOU ROAD, ECONOMIC DEVELOPMENT ZONE, JIANGYAN, JIANGSU PROVINCE



SAMPLING PHOTOS

Factory Name: Taizhou Youcheng Dyeing & Finishing Co.,Ltd
Factory Address:No.69 YANGZHOU ROAD, ECONOMIC DEVELOPMENT ZONE, JIANGYAN, JIANGSU PROVINCE



LOCAL WASTEWATER DISCHARGE REQUIREMENTS BASED ON FACTORY DISCHARGE LICENCE

Factory Name: Taizhou Youcheng Dyeing & Finishing Co.,Ltd
Factory Address: No.69 YANGZHOU ROAD, ECONOMIC DEVELOPMENT ZONE,
JIANGYAN, JIANGSU PROVINCE

1、废水污染物排放许可限值

(1) 主要排放口

排放口编号	排放口名称	污染物种类	许可排放浓度限值 (mg/L)
DW003	废水总排口	化学需氧量	200mg/L
DW003	废水总排口	氨氮 (NH3-N)	20mg/L
DW003	废水总排口	苯胺类	1.0mg/L
DW003	废水总排口	总磷 (以P计)	1.5mg/L
DW003	废水总排口	硫化物	1.0mg/L
DW003	废水总排口	悬浮物	100mg/L
DW003	废水总排口	pH值	6-9
DW003	废水总排口	色度	80
DW003	废水总排口	五日生化需氧量	50mg/L
DW003	废水总排口	总氮 (以N计)	30mg/L