

TEST REPORT

CLIENT DETAILS

Client Name: Carreman (Wenshang) Fabric Co., Ltd.
Client Contact: Hongsheng Zhu
Telephone: 13962245591
Email: hongshengzhu@carreman.com.cn
Address: North of Quanhe Road, West of Shuguang Road, South of Chenxin Road, Wenshang Economic Development Zone, Shandong Province, China

LABORATORY DETAILS

SGS Affiliate: SGS-CSTC Ltd.
SGS Contact: Amei Xu
Telephone: +86(021)60645461
Email: Amei.Xu@sgs.com
Address: The 4th Building, No.889, Yishan Road, Xuhui District, Shanghai, China

FACTORY DETAILS

Factory Name: Carreman (Wenshang) Fabric Co., Ltd.
Factory Contact: Hongsheng Zhu
Telephone: 13962245591
Email: hongshengzhu@carreman.com.cn
Address: North of Quanhe Road, West of Shuguang Road, South of Chenxin Road, Wenshang Economic Development Zone, Shandong Province, China
Types of Mills: (9) Washing
(13) Others
Discharge Destination: To Centralized Waste Water Treatment Plant
Name of Municipal/Centralized ETP: Shandong Utility Group Wenshang Sewage Treatment Co., Ltd.(Fodu Branch)
Address of Municipal/Centralized ETP: Intersection of Quanhe Road and Jixiang Road, Wenshang Economic Development Zone, Shandong Province, China

SAMPLE AND TESTING DETAILS

Sampling Country: SGS China SL
ZDHC Sampler's Certification No.: 8F146507053
Sampling Date: 23-03-2021
Sample Received Date: 25-03-2021
Test Performing Period: 25-03-2021 - 08-04-2021
No. of Samples: Water (3)
Sample Descriptions: 1) Incoming Water (Grab)
2) Raw Wastewater (6-hour Composite)
3) Discharged Wastewater (6-hour Composite)
Sample Volume: 1) Incoming Water 8L
2) Raw Waste Water 8L
3) Discharged Waste Water 20L
Testing Institute: SGS China SH Lab
Discharge Method: Indirect Discharge

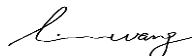
OVERALL RESULTS

	Incoming Water	Raw Waste Water	Discharged Waste Water
Conventional Parameters / Anion / Metals:	Fulfill Aspirational Limit	Exceed Foundational Limit	Please refer to the information in TEST RESULTS
MRSL Parameters:	Not Detected	Detected	Not Detected

REMARKS

- 1.This test document cannot be reproduced in any way, except in full content, without prior approval in writing by the laboratory.
- 2.The results shown in this test report refer only to the sampling and the sample(s) tested unless otherwise stated.
3. For indirect discharge, factory performance against ZDHC requirements for conventional parameters, anions and metals for Discharged Waste Water are for reference only. Actual factory performance on Discharged Waste Water should be compared with the discharged license of the factory.

Signed for and on behalf of



Linda Wang
Chemical Manager

RESULT SUMMARY

Factory Name: Carreman (Wenshang) Fabric Co., Ltd.
 Factory Address: North of Quanhe Road, West of Shuguang Road, South of Chenxin Road, Wenshang Economic Development Zone, Shandong Province, China

TEST ITEMS	Incoming Water	Raw Waste Water	Discharged Waste Water
Conventional Parameters	-	-	Please refer to the information in TEST RESULTS
Anions	-	-	O
Metals	O	X	X
Alkylphenols (APs) and Alkylphenol Ethoxylates (APEOs)	N/A	O	O
Chlorobenzenes and Chlorotoluenes (COCs)	N/A	O	O
Chlorophenols	N/A	O	O
Azo dyes	N/A	O	O
Carcinogenic dyes	N/A	O	O
Disperse dyes	N/A	O	O
Flame retardants	N/A	O	O
Glycols	N/A	O	O
Halogenated solvents	N/A	O	O
Organotin Compounds	N/A	O	O
Perfluorinated / Polyfluorinated Chemicals (PFCs)	N/A	O	O
Phthalates	O	X	O
Polycyclic Aromatic Hydrocarbons (PAHs)	N/A	O	O
Volatile Organic Compounds (VOCs)	N/A	O	O

Note:

X - Detected

O - Not Detected

N/A - Not Tested

TEST RESULTS

Factory Name: Carreman (Wenshang) Fabric Co., Ltd.

Factory Address: North of Quanhe Road, West of Shuguang Road, South of Chenxin Road, Wenshang Economic Development Zone, Shandong Province, China

Items	CAS No.	Reporting Limit	Units	Sample ID			Factory Performances			*Local Requirements			
				5210524450	5210524450	5210524450	Incoming Water	Raw Waste Water	Discharged Waste Water				
				2801-01	2801-03	2801-02							
				Date of Sampling							Incoming Water	Raw Waste Water	Discharged Waste Water
				23-03-2021									
				23-03-2021									
23-03-2021													
Date of Sample Received			Date of Sample Received										
25-03-2021			25-03-2021										
25-03-2021			25-03-2021										
Date of Sample Received			Date of Sample Received										
25-03-2021			25-03-2021										
25-03-2021			25-03-2021										
Sample Colour Description	-	-	-	Colorless	Near Colorless	Colorless	-	-	-	-			
Average Waste Water Flow**	-	-	L/hr	-	-	9.0x10 ³	-	-	-	-			
Conventional Parameters													
Temp-Difference	-	-	°C	-	-	N/A	-	-	-	N/A			
Temp-Discharge Pipe	-	-	°C	-	-	18.7	-	-	Fulfill Aspirational Limit	N/A			
Temp-Receiving Water ^A	-	-	°C	-	-	N/A	-	-	-	N/A			
TSS	-	5	mg/L	-	-	n.d.	-	-	Fulfill Aspirational Limit	400			
COD	-	10	mg/L	-	-	39	-	-	Fulfill Aspirational Limit	500			
Total Nitrogen (Total-N)	-	5	mg/L	-	-	n.d.	-	-	Fulfill Aspirational Limit	40			
pH Value	-	-	-	-	-	7.0	-	-	Fulfill Aspirational Limit	6.5-9.5			
Colour (436nm; 525nm; 620nm)	-	-	m ⁻¹	-	-	0.3; 0.2; 0.1	-	-	Fulfill Aspirational Limit	N/A			
Colour	-	-	-	-	-	1	-	-	-	64			
BOD (5-day)	-	5	mg/L	-	-	n.d.	-	-	Fulfill Aspirational Limit	350			
Ammonium Nitrogen (Ammonium-N)	-	0.5	mg/L	-	-	n.d.	-	-	Fulfill Aspirational Limit	45			
Total Phosphorus (Total-P)	-	0.1	mg/L	-	-	n.d.	-	-	Fulfill Aspirational Limit	3			
AOX	-	0.1	mg/L	-	-	0.1	-	-	Fulfill Aspirational Limit	N/A			
Oil and Grease	-	0.5	mg/L	-	-	0.7	-	-	Fulfill Progressive Limit	N/A			
Phenol	-	0.001	mg/L	-	-	n.d.	-	-	Fulfill Aspirational Limit	N/A			
Coliform	-	25	Bacteria / 100ml	-	-	n.d.	-	-	Fulfill Aspirational Limit	N/A			
Persistent Foam	-	Not Visible	-	-	-	Not Visible	-	-	Fulfill Aspirational Limit	N/A			
Anions													
Cyanide	-	0.05	mg/L	-	-	n.d.	-	-	Fulfill Aspirational Limit	N/A			
Sulfide	-	0.01	mg/L	-	-	n.d.	-	-	Fulfill Aspirational Limit	N/A			
Sulfite	-	0.2	mg/L	-	-	n.d.	-	-	Fulfill Aspirational Limit	N/A			
Metals													
Total Antimony (Sb) [#]	7440-36-0	0.01	mg/L	n.d.	0.14	0.05	Fulfill Aspirational Limit	Exceed Foundational Limit	Fulfill Progressive Limit	N/A			
Total Chromium (Cr)	7440-47-3	0.05	mg/L	n.d.	n.d.	n.d.	Fulfill Aspirational Limit	Fulfill Aspirational Limit	Fulfill Aspirational Limit	N/A			

TEST RESULTS

Factory Name: Carreman (Wenshang) Fabric Co., Ltd.

Factory Address: North of Quanhe Road, West of Shuguang Road, South of Chenxin Road, Wenshang Economic Development Zone, Shandong Province, China

Items	CAS No.	Reporting Limit	Units	Incoming Water	Raw Waste Water	Discharged Waste Water	Factory Performances			*Local Requirements	
							Sample ID	52105244502801-01	52105244502801-03		52105244502801-02
							Date of Sampling	23-03-2021	23-03-2021		23-03-2021
							Sampling Location	Tap water pipe	Raw wastewater collection tank		Discharged wastewater outlet
							Sampling Start Time	9:00	9:30		9:20
							Sampling End Time	9:10	15:40		15:30
Date of Sample Received	25-03-2021	25-03-2021	25-03-2021								
Items	CAS No.	Reporting Limit	Units	Incoming Water	Raw Waste Water	Discharged Waste Water	Incoming Water	Raw Waste Water	Discharged Waste Water	Discharged Waste Water	
Total Cobalt (Co)	7440-48-4	0.01	mg/L	n.d.	n.d.	n.d.	Fulfill Aspirational Limit	Fulfill Aspirational Limit	Fulfill Aspirational Limit	N/A	
Total Copper (Cu)	7440-50-8	0.25	mg/L	n.d.	n.d.	n.d.	Fulfill Aspirational Limit	Fulfill Aspirational Limit	Fulfill Aspirational Limit	N/A	
Total Nickel (Ni)	7440-02-0	0.05	mg/L	n.d.	n.d.	n.d.	Fulfill Aspirational Limit	Fulfill Aspirational Limit	Fulfill Aspirational Limit	N/A	
Total Silver (Ag)	7440-22-4	0.005	mg/L	n.d.	n.d.	n.d.	Fulfill Aspirational Limit	Fulfill Aspirational Limit	Fulfill Aspirational Limit	N/A	
Total Zinc (Zn)	7440-66-6	0.5	mg/L	n.d.	n.d.	n.d.	Fulfill Aspirational Limit	Fulfill Aspirational Limit	Fulfill Aspirational Limit	N/A	
Total Arsenic (As)	7440-38-2	0.005	mg/L	n.d.	n.d.	n.d.	Fulfill Aspirational Limit	Fulfill Aspirational Limit	Fulfill Aspirational Limit	N/A	
Total Cadmium (Cd)	7440-43-9	0.01	mg/L	n.d.	n.d.	n.d.	Fulfill Aspirational Limit	Fulfill Aspirational Limit	Fulfill Aspirational Limit	N/A	
Hexavalent Chromium (Cr-VI)	7440-47-3, 18540-29-9	0.001	mg/L	n.d.	n.d.	n.d.	Fulfill Aspirational Limit	Fulfill Aspirational Limit	Fulfill Aspirational Limit	N/A	
Total Lead (Pb)	7439-92-1	0.01	mg/L	n.d.	n.d.	n.d.	Fulfill Aspirational Limit	Fulfill Aspirational Limit	Fulfill Aspirational Limit	N/A	
Total Mercury (Hg)	7439-97-6	0.001	mg/L	n.d.	n.d.	n.d.	Fulfill Aspirational Limit	Fulfill Aspirational Limit	Fulfill Aspirational Limit	N/A	
Alkylphenols (APs) & Alkylphenol Ethoxylates (APEOs)											
Nonylphenol (NP), mixed isomers	Multiple, including 104-40-5, 11066-49-2, 25154-52-3, 84852-15-3, 90481-04-2, 1173019-62-9	5	µg/L	N/A	n.d.	n.d.	N/A	Not Detected	Not Detected	-	
Octylphenol (OP), mixed isomers	Multiple, including 140-66-9, 1606-26-4, 27193-26-6	5	µg/L	N/A	n.d.	n.d.	N/A	Not Detected	Not Detected	-	
Octylphenol ethoxylates (OPEO)	Multiple, including 9002-93-1, 9036-19-5, 68987-90-6	5	µg/L	N/A	n.d.	n.d.	N/A	Not Detected	Not Detected	-	
Nonylphenol ethoxylates (NPEO)	Multiple, including 9016-45-9, 26027-38-3, 37205-87-1, 68412-54-4, 127087-87-0	5	µg/L	N/A	n.d.	n.d.	N/A	Not Detected	Not Detected	-	
Chlorobenzenes & Chlorotoluenes (COCs)											
Monochlorobenzenes	108-90-7	0.2	µg/L	N/A	n.d.	n.d.	N/A	Not Detected	Not Detected	-	
1,2-Dichlorobenzene	95-50-1	0.2	µg/L	N/A	n.d.	n.d.	N/A	Not Detected	Not Detected	-	
1,3-Dichlorobenzene	541-73-1	0.2	µg/L	N/A	n.d.	n.d.	N/A	Not Detected	Not Detected	-	
1,4-Dichlorobenzene	106-46-7	0.2	µg/L	N/A	n.d.	n.d.	N/A	Not Detected	Not Detected	-	
1,2,3-Trichlorobenzene	87-61-6	0.2	µg/L	N/A	n.d.	n.d.	N/A	Not Detected	Not Detected	-	
1,2,4-Trichlorobenzene	120-82-1	0.2	µg/L	N/A	n.d.	n.d.	N/A	Not Detected	Not Detected	-	

TEST RESULTS

Factory Name: Carreman (Wenshang) Fabric Co., Ltd.

Factory Address: North of Quanhe Road, West of Shuguang Road, South of Chenxin Road, Wenshang Economic Development Zone, Shandong Province, China

Items	CAS No.	Reporting Limit	Units	Incoming Water	Raw Waste Water	Discharged Waste Water	Factory Performances			*Local Requirements	
							Sample ID	5210524450 2801-01	5210524450 2801-03		5210524450 2801-02
							Date of Sampling	23-03-2021	23-03-2021		23-03-2021
							Sampling Location	Tap water pipe	Raw wastewater collection tank		Discharged wastewater outlet
							Sampling Start Time	9:00	9:30		9:20
							Sampling End Time	9:10	15:40		15:30
Date of Sample Received	25-03-2021	25-03-2021	25-03-2021								
							Incoming Water	Raw Waste Water	Discharged Waste Water	Discharged Waste Water	
1,3,5-Trichlorobenzene	108-70-3	0.2	µg/L	N/A	n.d.	n.d.	N/A	Not Detected	Not Detected	-	
1,2,3,4-Tetrachlorobenzene	634-66-2	0.2	µg/L	N/A	n.d.	n.d.	N/A	Not Detected	Not Detected	-	
1,2,3,5-Tetrachlorobenzene	634-90-2	0.2	µg/L	N/A	n.d.	n.d.	N/A	Not Detected	Not Detected	-	
1,2,4,5-Tetrachlorobenzene	95-94-3	0.2	µg/L	N/A	n.d.	n.d.	N/A	Not Detected	Not Detected	-	
Pentachlorobenzene	608-93-5	0.2	µg/L	N/A	n.d.	n.d.	N/A	Not Detected	Not Detected	-	
Hexachlorobenzene	118-74-1	0.2	µg/L	N/A	n.d.	n.d.	N/A	Not Detected	Not Detected	-	
2-Chlorotoluene	95-49-8	0.2	µg/L	N/A	n.d.	n.d.	N/A	Not Detected	Not Detected	-	
3-Chlorotoluene	108-41-8	0.2	µg/L	N/A	n.d.	n.d.	N/A	Not Detected	Not Detected	-	
4-Chlorotoluene	106-43-4	0.2	µg/L	N/A	n.d.	n.d.	N/A	Not Detected	Not Detected	-	
2,3-Dichlorotoluene	32768-54-0	0.2	µg/L	N/A	n.d.	n.d.	N/A	Not Detected	Not Detected	-	
2,4-Dichlorotoluene	95-73-8	0.2	µg/L	N/A	n.d.	n.d.	N/A	Not Detected	Not Detected	-	
2,5-Dichlorotoluene	19398-61-9	0.2	µg/L	N/A	n.d.	n.d.	N/A	Not Detected	Not Detected	-	
2,6-Dichlorotoluene	118-69-4	0.2	µg/L	N/A	n.d.	n.d.	N/A	Not Detected	Not Detected	-	
3,4-Dichlorotoluene	95-75-0	0.2	µg/L	N/A	n.d.	n.d.	N/A	Not Detected	Not Detected	-	
3,5-Dichlorotoluene	25186-47-4	0.2	µg/L	N/A	n.d.	n.d.	N/A	Not Detected	Not Detected	-	
2,3,4-Trichlorotoluene	7359-72-0	0.2	µg/L	N/A	n.d.	n.d.	N/A	Not Detected	Not Detected	-	
2,3,6-Trichlorotoluene	2077-46-5	0.2	µg/L	N/A	n.d.	n.d.	N/A	Not Detected	Not Detected	-	
2,4,5-Trichlorotoluene	6639-30-1	0.2	µg/L	N/A	n.d.	n.d.	N/A	Not Detected	Not Detected	-	
2,4,6-Trichlorotoluene	23749-65-7	0.2	µg/L	N/A	n.d.	n.d.	N/A	Not Detected	Not Detected	-	
3,4,5-Trichlorotoluene	21472-86-6	0.2	µg/L	N/A	n.d.	n.d.	N/A	Not Detected	Not Detected	-	
2,3,4,5-Tetrachlorotoluene	76057-12-0	0.2	µg/L	N/A	n.d.	n.d.	N/A	Not Detected	Not Detected	-	
2,3,5,6-Tetrachlorotoluene	29733-70-8	0.2	µg/L	N/A	n.d.	n.d.	N/A	Not Detected	Not Detected	-	

TEST RESULTS

Factory Name: Carreman (Wenshang) Fabric Co., Ltd.

Factory Address: North of Quanhe Road, West of Shuguang Road, South of Chenxin Road, Wenshang Economic Development Zone, Shandong Province, China

	Sample ID			Date of Sampling			Sampling Location			Sampling Start Time			Sampling End Time			Date of Sample Received			Factory Performances	*Local Requirements
	5210524450 2801-01			5210524450 2801-03			5210524450 2801-02			23-03-2021			23-03-2021			23-03-2021				
	Tap water pipe			Raw wastewater collection tank			Discharged wastewater outlet													
	9:00			9:30			9:20													
	9:10			15:40			15:30													
	25-03-2021			25-03-2021			25-03-2021													
Items	CAS No.	Reporting Limit	Units	Incoming Water	Raw Waste Water	Discharged Waste Water	Incoming Water	Raw Waste Water	Discharged Waste Water	Discharged Waste Water										
2,3,4,6-Tetrachlorotoluene	875-40-1	0.2	µg/L	N/A	n.d.	n.d.	N/A	Not Detected	Not Detected	-										
Pentachlorotoluene	877-11-2	0.2	µg/L	N/A	n.d.	n.d.	N/A	Not Detected	Not Detected	-										
Chlorophenols																				
2-Chlorophenol	95-57-8	0.5	µg/L	N/A	n.d.	n.d.	N/A	Not Detected	Not Detected	-										
3-Chlorophenol	108-43-0	0.5	µg/L	N/A	n.d.	n.d.	N/A	Not Detected	Not Detected	-										
4-Chlorophenol	106-48-9	0.5	µg/L	N/A	n.d.	n.d.	N/A	Not Detected	Not Detected	-										
2,3-Dichlorophenol	576-24-9	0.5	µg/L	N/A	n.d.	n.d.	N/A	Not Detected	Not Detected	-										
2,4-Dichlorophenol	120-83-2	0.5	µg/L	N/A	n.d.	n.d.	N/A	Not Detected	Not Detected	-										
2,5-Dichlorophenol	583-78-8	0.5	µg/L	N/A	n.d.	n.d.	N/A	Not Detected	Not Detected	-										
2,6-Dichlorophenol	87-65-0	0.5	µg/L	N/A	n.d.	n.d.	N/A	Not Detected	Not Detected	-										
3,4-Dichlorophenol	95-77-2	0.5	µg/L	N/A	n.d.	n.d.	N/A	Not Detected	Not Detected	-										
3,5-Dichlorophenol	591-35-5	0.5	µg/L	N/A	n.d.	n.d.	N/A	Not Detected	Not Detected	-										
2,3,4-Trichlorophenol	15950-66-0	0.5	µg/L	N/A	n.d.	n.d.	N/A	Not Detected	Not Detected	-										
2,3,5-Trichlorophenol	933-78-8	0.5	µg/L	N/A	n.d.	n.d.	N/A	Not Detected	Not Detected	-										
2,3,6-Trichlorophenol	933-75-5	0.5	µg/L	N/A	n.d.	n.d.	N/A	Not Detected	Not Detected	-										
2,4,5-Trichlorophenol	95-95-4	0.5	µg/L	N/A	n.d.	n.d.	N/A	Not Detected	Not Detected	-										
2,4,6-Trichlorophenol	88-06-2	0.5	µg/L	N/A	n.d.	n.d.	N/A	Not Detected	Not Detected	-										
3,4,5-Trichlorophenol	609-19-8	0.5	µg/L	N/A	n.d.	n.d.	N/A	Not Detected	Not Detected	-										
2,3,4,5-Tetrachlorophenol	4901-51-3	0.5	µg/L	N/A	n.d.	n.d.	N/A	Not Detected	Not Detected	-										
2,3,4,6-Tetrachlorophenol	58-90-2	0.5	µg/L	N/A	n.d.	n.d.	N/A	Not Detected	Not Detected	-										
2,3,5,6-Tetrachlorophenol	935-95-5	0.5	µg/L	N/A	n.d.	n.d.	N/A	Not Detected	Not Detected	-										
Pentachlorophenol	87-86-5	0.5	µg/L	N/A	n.d.	n.d.	N/A	Not Detected	Not Detected	-										
Azo Dyes																				
4,4'-Methylene-Bis(2-Chloroaniline)	101-14-4	0.1	µg/L	N/A	n.d.	n.d.	N/A	Not Detected	Not Detected	-										

TEST RESULTS

Factory Name: Carreman (Wenshang) Fabric Co., Ltd.

Factory Address: North of Quanhe Road, West of Shuguang Road, South of Chenxin Road, Wenshang Economic Development Zone, Shandong Province, China

Items	Sample ID			Date of Sampling			Sampling Location			Sampling Start Time			Sampling End Time			Date of Sample Received			Factory Performances	*Local Requirements
	5210524450 2801-01			5210524450 2801-03			5210524450 2801-02			23-03-2021			23-03-2021			23-03-2021				
	Tap water pipe			Raw wastewater collection tank			Discharged wastewater outlet													
	9:00			9:30			9:20													
	9:10			15:40			15:30													
	25-03-2021			25-03-2021			25-03-2021													
CAS No.	Reporting Limit	Units	Incoming Water	Raw Waste Water	Discharged Waste Water	Incoming Water	Raw Waste Water	Discharged Waste Water	Incoming Water	Raw Waste Water	Discharged Waste Water	Discharged Waste Water								
4,4'-Diaminodiphenylmethane	101-77-9	0.1	µg/L	N/A	n.d.	n.d.	N/A	Not Detected	Not Detected	Not Detected	-									
4,4'-Oxydianiline	101-80-4	0.1	µg/L	N/A	n.d.	n.d.	N/A	Not Detected	Not Detected	Not Detected	-									
p-Chloroaniline	106-47-8	0.1	µg/L	N/A	n.d.	n.d.	N/A	Not Detected	Not Detected	Not Detected	-									
3,3'-Dimethoxybenzidine	119-90-4	0.1	µg/L	N/A	n.d.	n.d.	N/A	Not Detected	Not Detected	Not Detected	-									
3,3'-Dimethylbenzidine	119-93-7	0.1	µg/L	N/A	n.d.	n.d.	N/A	Not Detected	Not Detected	Not Detected	-									
p-Cresidine	120-71-8	0.1	µg/L	N/A	n.d.	n.d.	N/A	Not Detected	Not Detected	Not Detected	-									
2,4,5-Trimethylaniline	137-17-7	0.1	µg/L	N/A	n.d.	n.d.	N/A	Not Detected	Not Detected	Not Detected	-									
4,4'-Thiodianiline	139-65-1	0.1	µg/L	N/A	n.d.	n.d.	N/A	Not Detected	Not Detected	Not Detected	-									
p-Aminoazobenzene	60-09-3	0.1	µg/L	N/A	n.d.	n.d.	N/A	Not Detected	Not Detected	Not Detected	-									
2,4-Diaminoanisole	615-05-4	0.1	µg/L	N/A	n.d.	n.d.	N/A	Not Detected	Not Detected	Not Detected	-									
3,3'-Dimethyl-4,4'-diaminodiphenylmethane	838-88-0	0.1	µg/L	N/A	n.d.	n.d.	N/A	Not Detected	Not Detected	Not Detected	-									
2,6-Xylidine	87-62-7	0.1	µg/L	N/A	n.d.	n.d.	N/A	Not Detected	Not Detected	Not Detected	-									
o-Anisidine	90-04-0	0.1	µg/L	N/A	n.d.	n.d.	N/A	Not Detected	Not Detected	Not Detected	-									
2-Naphthylamine	91-59-8	0.1	µg/L	N/A	n.d.	n.d.	N/A	Not Detected	Not Detected	Not Detected	-									
3,3'-Dichlorobenzidine	91-94-1	0.1	µg/L	N/A	n.d.	n.d.	N/A	Not Detected	Not Detected	Not Detected	-									
4-Aminodiphenyl	92-67-1	0.1	µg/L	N/A	n.d.	n.d.	N/A	Not Detected	Not Detected	Not Detected	-									
Benzidine	92-87-5	0.1	µg/L	N/A	n.d.	n.d.	N/A	Not Detected	Not Detected	Not Detected	-									
o-Toluidine	95-53-4	0.1	µg/L	N/A	n.d.	n.d.	N/A	Not Detected	Not Detected	Not Detected	-									
2,4-Xylidine	95-68-1	0.1	µg/L	N/A	n.d.	n.d.	N/A	Not Detected	Not Detected	Not Detected	-									
4-Chloro-o-Toluidine	95-69-2	0.1	µg/L	N/A	n.d.	n.d.	N/A	Not Detected	Not Detected	Not Detected	-									
2,4-Toluylenediamine	95-80-7	0.1	µg/L	N/A	n.d.	n.d.	N/A	Not Detected	Not Detected	Not Detected	-									
o-Aminoazotoluene	97-56-3	0.1	µg/L	N/A	n.d.	n.d.	N/A	Not Detected	Not Detected	Not Detected	-									

TEST RESULTS

Factory Name: Carreman (Wenshang) Fabric Co., Ltd.

Factory Address: North of Quanhe Road, West of Shuguang Road, South of Chenxin Road, Wenshang Economic Development Zone, Shandong Province, China

Items	CAS No.	Reporting Limit	Units	Incoming Water	Raw Waste Water	Discharged Waste Water	Factory Performances			*Local Requirements	
							Sample ID	5210524450 2801-01	5210524450 2801-03		5210524450 2801-02
							Date of Sampling	23-03-2021	23-03-2021		23-03-2021
							Sampling Location	Tap water pipe	Raw wastewater collection tank		Discharged wastewater outlet
							Sampling Start Time	9:00	9:30		9:20
							Sampling End Time	9:10	15:40		15:30
Date of Sample Received	25-03-2021	25-03-2021	25-03-2021								
							Incoming Water	Raw Waste Water	Discharged Waste Water	Discharged Waste Water	
2-Amino-4-Nitrotoluene	99-55-8	0.1	µg/L	N/A	n.d.	n.d.	N/A	Not Detected	Not Detected	-	
Carcinogenic Dyes											
Direct Black 38	1937-37-7	500	µg/L	N/A	n.d.	n.d.	N/A	Not Detected	Not Detected	-	
Direct Blue 6	2602-46-2	500	µg/L	N/A	n.d.	n.d.	N/A	Not Detected	Not Detected	-	
Acid Red 26	3761-53-3	500	µg/L	N/A	n.d.	n.d.	N/A	Not Detected	Not Detected	-	
Basic Red 9	569-61-9	500	µg/L	N/A	n.d.	n.d.	N/A	Not Detected	Not Detected	-	
Direct Red 28	573-58-0	500	µg/L	N/A	n.d.	n.d.	N/A	Not Detected	Not Detected	-	
Basic Violet 14	632-99-5	500	µg/L	N/A	n.d.	n.d.	N/A	Not Detected	Not Detected	-	
Disperse Blue 1	2475-45-8	500	µg/L	N/A	n.d.	n.d.	N/A	Not Detected	Not Detected	-	
Disperse Blue 3	2475-46-9	500	µg/L	N/A	n.d.	n.d.	N/A	Not Detected	Not Detected	-	
Basic Blue 26	2580-56-5	500	µg/L	N/A	n.d.	n.d.	N/A	Not Detected	Not Detected	-	
Basic Green 4 (malachite green chloride)^	569-64-2	500	µg/L	N/A	n.d.	n.d.	N/A	Not Detected	Not Detected	-	
Basic Green 4 (malachite green oxalate)^	2437-29-8	500	µg/L	N/A	n.d.	n.d.	N/A	Not Detected	Not Detected	-	
Basic Green 4 (malachite green)	10309-95-2	500	µg/L	N/A	n.d.	n.d.	N/A	Not Detected	Not Detected	-	
Disperse Orange 11	82-28-0	500	µg/L	N/A	n.d.	n.d.	N/A	Not Detected	Not Detected	-	
Disperse Dyes											
Disperse Yellow 1	119-15-3	50	µg/L	N/A	n.d.	n.d.	N/A	Not Detected	Not Detected	-	
Disperse Blue 102	12222-97-8	50	µg/L	N/A	n.d.	n.d.	N/A	Not Detected	Not Detected	-	
Disperse Blue 106	12223-01-7	50	µg/L	N/A	n.d.	n.d.	N/A	Not Detected	Not Detected	-	
Disperse Yellow 39	12236-29-2	50	µg/L	N/A	n.d.	n.d.	N/A	Not Detected	Not Detected	-	
Disperse Orange 37/59/76	13301-61-6	50	µg/L	N/A	n.d.	n.d.	N/A	Not Detected	Not Detected	-	
Disperse Brown 1	23355-64-8	50	µg/L	N/A	n.d.	n.d.	N/A	Not Detected	Not Detected	-	
Disperse Orange 1	2581-69-3	50	µg/L	N/A	n.d.	n.d.	N/A	Not Detected	Not Detected	-	
Disperse Yellow 3	2832-40-8	50	µg/L	N/A	n.d.	n.d.	N/A	Not Detected	Not Detected	-	

TEST RESULTS

Factory Name: Carreman (Wenshang) Fabric Co., Ltd.

Factory Address: North of Quanhe Road, West of Shuguang Road, South of Chenxin Road, Wenshang Economic Development Zone, Shandong Province, China

Items	Sample ID			Date of Sampling			Sampling Location			Sampling Start Time			Sampling End Time			Date of Sample Received			Factory Performances	*Local Requirements
	5210524450 2801-01			5210524450 2801-03			5210524450 2801-02			23-03-2021			23-03-2021			23-03-2021				
	Tap water pipe			Raw wastewater collection tank			Discharged wastewater outlet													
	9:00			9:30			9:20													
	9:10			15:40			15:30													
	25-03-2021			25-03-2021			25-03-2021													
CAS No.	Reporting Limit	Units	Incoming Water	Raw Waste Water	Discharged Waste Water	Incoming Water	Raw Waste Water	Discharged Waste Water	Incoming Water	Raw Waste Water	Discharged Waste Water	Discharged Waste Water								
Disperse Red 11	2872-48-2	50	µg/L	N/A	n.d.	n.d.	N/A	Not Detected	Not Detected	Not Detected	-									
Disperse Red 1	2872-52-8	50	µg/L	N/A	n.d.	n.d.	N/A	Not Detected	Not Detected	Not Detected	-									
Disperse Red 17	3179-89-3	50	µg/L	N/A	n.d.	n.d.	N/A	Not Detected	Not Detected	Not Detected	-									
Disperse Blue 7	3179-90-6	50	µg/L	N/A	n.d.	n.d.	N/A	Not Detected	Not Detected	Not Detected	-									
Disperse Blue 26	3860-63-7	50	µg/L	N/A	n.d.	n.d.	N/A	Not Detected	Not Detected	Not Detected	-									
Disperse Yellow 49	54824-37-2	50	µg/L	N/A	n.d.	n.d.	N/A	Not Detected	Not Detected	Not Detected	-									
Disperse Blue 35	12222-75-2, 56524-77-7	50	µg/L	N/A	n.d.	n.d.	N/A	Not Detected	Not Detected	Not Detected	-									
Disperse Blue 124	61951-51-7	50	µg/L	N/A	n.d.	n.d.	N/A	Not Detected	Not Detected	Not Detected	-									
Disperse Yellow 9	6373-73-5	50	µg/L	N/A	n.d.	n.d.	N/A	Not Detected	Not Detected	Not Detected	-									
Disperse Orange 3	730-40-5	50	µg/L	N/A	n.d.	n.d.	N/A	Not Detected	Not Detected	Not Detected	-									
Flame Retardants																				
Tris(2-chloroethyl) phosphate (TCEP)	115-96-8	5	µg/L	N/A	n.d.	n.d.	N/A	Not Detected	Not Detected	Not Detected	-									
Decabromodiphenyl ethers (DecaBDE)	1163-19-5	5	µg/L	N/A	n.d.	n.d.	N/A	Not Detected	Not Detected	Not Detected	-									
Tris(2,3-dibromopropyl) phosphate (TRIS)	126-72-7	5	µg/L	N/A	n.d.	n.d.	N/A	Not Detected	Not Detected	Not Detected	-									
Pentabromodiphenyl ethers (PentaBDE)	32534-81-9	5	µg/L	N/A	n.d.	n.d.	N/A	Not Detected	Not Detected	Not Detected	-									
Octabromodiphenyl ethers (OctaBDE)	32536-52-0	5	µg/L	N/A	n.d.	n.d.	N/A	Not Detected	Not Detected	Not Detected	-									
Bis(2,3-dibromopropyl)phosphate (BIS)	5412-25-9	5	µg/L	N/A	n.d.	n.d.	N/A	Not Detected	Not Detected	Not Detected	-									
Tris(1-aziridinyl)phosphine oxide (TEPA)	545-55-1	5	µg/L	N/A	n.d.	n.d.	N/A	Not Detected	Not Detected	Not Detected	-									
Polybrominated biphenyls (PBBs)	59536-65-1	5	µg/L	N/A	n.d.	n.d.	N/A	Not Detected	Not Detected	Not Detected	-									
Tetrabromobisphenol A (TBBPA)	79-94-7	5	µg/L	N/A	n.d.	n.d.	N/A	Not Detected	Not Detected	Not Detected	-									
Hexabromocyclododecane (HBCDD)	134237-50-6, 134237-51-7, 134237-52-8, 25637-99-4, 3194-55-6	5	µg/L	N/A	n.d.	n.d.	N/A	Not Detected	Not Detected	Not Detected	-									
2,2-Bis(bromomethyl)-1,3-propanediol (BBMP)	3296-90-0	5	µg/L	N/A	n.d.	n.d.	N/A	Not Detected	Not Detected	Not Detected	-									
Tris(1,3-dichloro-2-propyl) phosphate (TDCPP)	13674-87-8	5	µg/L	N/A	n.d.	n.d.	N/A	Not Detected	Not Detected	Not Detected	-									

TEST RESULTS

Factory Name: Carreman (Wenshang) Fabric Co., Ltd.

Factory Address: North of Quanhe Road, West of Shuguang Road, South of Chenxin Road, Wenshang Economic Development Zone, Shandong Province, China

Items	CAS No.	Reporting Limit	Units	Incoming Water	Raw Waste Water	Discharged Waste Water	Factory Performances			*Local Requirements	
							Sample ID	5210524450 2801-01	5210524450 2801-03		5210524450 2801-02
							Date of Sampling	23-03-2021	23-03-2021		23-03-2021
							Sampling Location	Tap water pipe	Raw wastewater collection tank		Discharged wastewater outlet
							Sampling Start Time	9:00	9:30		9:20
							Sampling End Time	9:10	15:40		15:30
Date of Sample Received	25-03-2021	25-03-2021	25-03-2021								
Items	CAS No.	Reporting Limit	Units	Incoming Water	Raw Waste Water	Discharged Waste Water	Incoming Water	Raw Waste Water	Discharged Waste Water	Discharged Waste Water	
Short Chain Chlorinated Paraffins (SCCP), C ₁₀ -C ₁₃	85535-84-8	5	µg/L	N/A	n.d.	n.d.	N/A	Not Detected	Not Detected	-	
Glycols											
Bis(2-methoxyethyl)-ether	111-96-6	50	µg/L	N/A	n.d.	n.d.	N/A	Not Detected	Not Detected	-	
2-Ethoxyethanol	110-80-5	50	µg/L	N/A	n.d.	n.d.	N/A	Not Detected	Not Detected	-	
2-Ethoxyethyl acetate	111-15-9	50	µg/L	N/A	n.d.	n.d.	N/A	Not Detected	Not Detected	-	
Ethylene glycol dimethyl ether	110-71-4	50	µg/L	N/A	n.d.	n.d.	N/A	Not Detected	Not Detected	-	
2-Methoxyethanol	109-86-4	50	µg/L	N/A	n.d.	n.d.	N/A	Not Detected	Not Detected	-	
2-Methoxyethylacetate	110-49-6	50	µg/L	N/A	n.d.	n.d.	N/A	Not Detected	Not Detected	-	
2-Methoxypropylacetate	70657-70-4	50	µg/L	N/A	n.d.	n.d.	N/A	Not Detected	Not Detected	-	
Triethylene glycol dimethyl ether	112-49-2	50	µg/L	N/A	n.d.	n.d.	N/A	Not Detected	Not Detected	-	
Halogenated Solvents											
1,2-Dichloroethane	107-06-2	1	µg/L	N/A	n.d.	n.d.	N/A	Not Detected	Not Detected	-	
Methylene chloride	75-09-2	1	µg/L	N/A	n.d.	n.d.	N/A	Not Detected	Not Detected	-	
Trichloroethene	79-01-6	1	µg/L	N/A	n.d.	n.d.	N/A	Not Detected	Not Detected	-	
Tetrachloroethene	127-18-4	1	µg/L	N/A	n.d.	n.d.	N/A	Not Detected	Not Detected	-	
Organotin Compounds***											
Mono-, di- and tri-methyltin derivatives	Multiple	0.01	µg/L	N/A	n.d.	n.d.	N/A	Not Detected	Not Detected	-	
Mono-, di- and tri-butyltin derivatives	Multiple	0.01	µg/L	N/A	n.d.	n.d.	N/A	Not Detected	Not Detected	-	
Mono-, di- and tri-phenyltin derivatives	Multiple	0.01	µg/L	N/A	n.d.	n.d.	N/A	Not Detected	Not Detected	-	
Mono-, di- and tri-octyltin derivatives	Multiple	0.01	µg/L	N/A	n.d.	n.d.	N/A	Not Detected	Not Detected	-	
Perfluorinated / Polyfluorinated Chemicals (PFCs)											
PFOS	1763-23-1	0.01	µg/L	N/A	n.d.	n.d.	N/A	Not Detected	Not Detected	-	
PFOA	335-67-1	0.01	µg/L	N/A	n.d.	n.d.	N/A	Not Detected	Not Detected	-	
PFBS	375-73-5, 59933-66-3, 29420-49-3, 29420-43-3	0.01	µg/L	N/A	n.d.	n.d.	N/A	Not Detected	Not Detected	-	
PFHxA	307-24-4	0.01	µg/L	N/A	n.d.	n.d.	N/A	Not Detected	Not Detected	-	

TEST RESULTS

Factory Name: Carreman (Wenshang) Fabric Co., Ltd.

Factory Address: North of Quanhe Road, West of Shuguang Road, South of Chenxin Road, Wenshang Economic Development Zone, Shandong Province, China

Items	CAS No.	Reporting Limit	Units	Sample ID			Factory Performances			*Local Requirements
				5210524450	5210524450	5210524450				
				2801-01	2801-03	2801-02				
				Date of Sampling						
				Date of Sample Received						
				Date of Sampling						
Sampling Location				Tap water pipe	Raw wastewater collection tank	Discharged wastewater outlet				
Sampling Start Time				9:00	9:30	9:20				
Sampling End Time				9:10	15:40	15:30				
Date of Sample Received				25-03-2021	25-03-2021	25-03-2021				
				Incoming Water	Raw Waste Water	Discharged Waste Water	Incoming Water	Raw Waste Water	Discharged Waste Water	Discharged Waste Water
8:2 FTOH	678-39-7	1	µg/L	N/A	n.d.	n.d.	N/A	Not Detected	Not Detected	-
6:2 FTOH	647-42-7	1	µg/L	N/A	n.d.	n.d.	N/A	Not Detected	Not Detected	-
Phthalates										
Di(2-Ethyl Hexyl) Phthalate (DEHP)	117-81-7	10	µg/L	n.d.	23	n.d.	Not Detected	Detected	Not Detected	-
Bis(2-methoxyethyl)phthalate (DMEP)	117-82-8	10	µg/L	n.d.	n.d.	n.d.	Not Detected	Not Detected	Not Detected	-
Di-N-Octyl Phthalate (DNOP)	117-84-0	10	µg/L	n.d.	n.d.	n.d.	Not Detected	Not Detected	Not Detected	-
Di-Iso-Decyl Phthalate (DIDP)	26761-40-0, 68515-49-1	10	µg/L	n.d.	n.d.	n.d.	Not Detected	Not Detected	Not Detected	-
Di-Iso-Nonyl Phthalate (DINP)	28553-12-0, 68515-48-0	10	µg/L	n.d.	n.d.	n.d.	Not Detected	Not Detected	Not Detected	-
Di-N-Hexyl Phthalate (DNHP)	84-75-3	10	µg/L	n.d.	n.d.	n.d.	Not Detected	Not Detected	Not Detected	-
Dibutyl Phthalate (DBP)	84-74-2	10	µg/L	n.d.	n.d.	n.d.	Not Detected	Not Detected	Not Detected	-
Benzyl Butyl Phthalate (BBP)	85-68-7	10	µg/L	n.d.	n.d.	n.d.	Not Detected	Not Detected	Not Detected	-
Dinonyl phthalate (DNP)	84-76-4	10	µg/L	n.d.	n.d.	n.d.	Not Detected	Not Detected	Not Detected	-
Diethyl Phthalate (DEP)	84-66-2	10	µg/L	n.d.	n.d.	n.d.	Not Detected	Not Detected	Not Detected	-
Di-N-Propyl Phthalate (DPRP)	131-16-8	10	µg/L	n.d.	n.d.	n.d.	Not Detected	Not Detected	Not Detected	-
Di-Iso-Butyl Phthalate (DIBP)	84-69-5	10	µg/L	n.d.	n.d.	n.d.	Not Detected	Not Detected	Not Detected	-
Dicyclohexyl Phthalate (DCHP)	84-61-7	10	µg/L	n.d.	n.d.	n.d.	Not Detected	Not Detected	Not Detected	-
Di-Iso-Octyl Phthalate (DIOP)	27554-26-3	10	µg/L	n.d.	n.d.	n.d.	Not Detected	Not Detected	Not Detected	-
1,2-Benzenedicarboxylic acid, Di-C7-11 Branched and Linear Alkyl Esters (DHNUP)	68515-42-4	10	µg/L	n.d.	n.d.	n.d.	Not Detected	Not Detected	Not Detected	-
1,2-Benzenedicarboxylic acid, Di-C6-8 Branched Alkyl Esters, C7-rich (DIHP)	71888-89-6	10	µg/L	n.d.	n.d.	n.d.	Not Detected	Not Detected	Not Detected	-
Polycyclic Aromatic Hydrocarbons (PAHs)										
Benzo[a]pyrene	50-32-8	1	µg/L	N/A	n.d.	n.d.	N/A	Not Detected	Not Detected	-
Anthracene	120-12-7	1	µg/L	N/A	n.d.	n.d.	N/A	Not Detected	Not Detected	-
Pyrene	129-00-0	1	µg/L	N/A	n.d.	n.d.	N/A	Not Detected	Not Detected	-
Benzo[ghi]perylene	191-24-2	1	µg/L	N/A	n.d.	n.d.	N/A	Not Detected	Not Detected	-

TEST RESULTS

Factory Name: Carreman (Wenshang) Fabric Co., Ltd.

Factory Address: North of Quanhe Road, West of Shuguang Road, South of Chenxin Road, Wenshang Economic Development Zone, Shandong Province, China

Items	Sample ID			Date of Sampling			Sampling Location			Sampling Start Time			Sampling End Time			Date of Sample Received			Factory Performances	*Local Requirements
	5210524450 2801-01			5210524450 2801-03			5210524450 2801-02			23-03-2021			23-03-2021			23-03-2021				
	Tap water pipe			Raw wastewater collection tank			Discharged wastewater outlet													
	9:00			9:30			9:20													
	9:10			15:40			15:30													
	25-03-2021			25-03-2021			25-03-2021													
CAS No.	Reporting Limit	Units	Incoming Water	Raw Waste Water	Discharged Waste Water	Incoming Water	Raw Waste Water	Discharged Waste Water	Incoming Water	Raw Waste Water	Discharged Waste Water	Discharged Waste Water								
Benzo[e]pyrene	192-97-2	1	µg/L	N/A	n.d.	n.d.	N/A	Not Detected	Not Detected	Not Detected	-									
Indeno[1,2,3-cd]pyrene	193-39-5	1	µg/L	N/A	n.d.	n.d.	N/A	Not Detected	Not Detected	Not Detected	-									
Benzo[j]fluoranthene	205-82-3	1	µg/L	N/A	n.d.	n.d.	N/A	Not Detected	Not Detected	Not Detected	-									
Benzo[b]fluoranthene	205-99-2	1	µg/L	N/A	n.d.	n.d.	N/A	Not Detected	Not Detected	Not Detected	-									
Fluoranthene	206-44-0	1	µg/L	N/A	n.d.	n.d.	N/A	Not Detected	Not Detected	Not Detected	-									
Benzo[k]fluoranthene	207-08-9	1	µg/L	N/A	n.d.	n.d.	N/A	Not Detected	Not Detected	Not Detected	-									
Acenaphthylene	208-96-8	1	µg/L	N/A	n.d.	n.d.	N/A	Not Detected	Not Detected	Not Detected	-									
Chrysene	218-01-9	1	µg/L	N/A	n.d.	n.d.	N/A	Not Detected	Not Detected	Not Detected	-									
Dibenz[a,h]anthracene	53-70-3	1	µg/L	N/A	n.d.	n.d.	N/A	Not Detected	Not Detected	Not Detected	-									
Benzo[a]anthracene	56-55-3	1	µg/L	N/A	n.d.	n.d.	N/A	Not Detected	Not Detected	Not Detected	-									
Acenaphthene	83-32-9	1	µg/L	N/A	n.d.	n.d.	N/A	Not Detected	Not Detected	Not Detected	-									
Phenanthrene	85-01-8	1	µg/L	N/A	n.d.	n.d.	N/A	Not Detected	Not Detected	Not Detected	-									
Fluorene	86-73-7	1	µg/L	N/A	n.d.	n.d.	N/A	Not Detected	Not Detected	Not Detected	-									
Naphthalene	91-20-3	1	µg/L	N/A	n.d.	n.d.	N/A	Not Detected	Not Detected	Not Detected	-									
Volatile Organic Compounds (VOCs)																				
Benzene	71-43-2	1	µg/L	N/A	n.d.	n.d.	N/A	Not Detected	Not Detected	Not Detected	-									
Xylene	1330-20-7	1	µg/L	N/A	n.d.	n.d.	N/A	Not Detected	Not Detected	Not Detected	-									
o-cresol	95-48-7	1	µg/L	N/A	n.d.	n.d.	N/A	Not Detected	Not Detected	Not Detected	-									
p-cresol	106-44-5	1	µg/L	N/A	n.d.	n.d.	N/A	Not Detected	Not Detected	Not Detected	-									

TEST RESULTS

Factory Name: Carreman (Wenshang) Fabric Co., Ltd.

Factory Address: North of Quanhe Road, West of Shuguang Road, South of Chenxin Road, Wenshang Economic Development Zone, Shandong Province, China

	Sample ID			Date of Sampling			Sampling Location			Sampling Start Time			Sampling End Time			Date of Sample Received			Factory Performances	*Local Requirements
	5210524450 2801-01			5210524450 2801-03			5210524450 2801-02			23-03-2021			23-03-2021			23-03-2021				
	Tap water pipe			Raw wastewater collection tank			Discharged wastewater outlet													
	9:00			9:30			9:20													
	9:10			15:40			15:30													
	25-03-2021			25-03-2021			25-03-2021													
Items	CAS No.	Reporting Limit	Units	Incoming Water	Raw Waste Water	Discharged Waste Water	Incoming Water	Raw Waste Water	Discharged Waste Water	Discharged Waste Water										
m-cresol	108-39-4	1	µg/L	N/A	n.d.	n.d.	N/A	Not Detected	Not Detected	-										

Remarks:

n.d. = Not Detected

N/A = Not Applicable

*- = Not Required to be Test

[^]The test result is based on the calculation of selected element(s) and to the worst-case scenario

^fData collection only for polyester production

^{*}Please refer to the details of the Local Requirements in the Appendix Section

^{**}Data provided by factory(online monitor system)

^{***}The specific organotin parameters are listed only when it is detected

[^]Due to inaccessible of the location of Receiving Water, the measurement of Temp-Receiving Water cannot be determined

TEST PARAMETERS

Factory Name: Carreman (Wenshang) Fabric Co., Ltd.
Factory Address: North of Quanhe Road, West of Shuguang Road, South of Chenxin Road, \

ITEMS	CAS No.	METHODS	ZDHC REQUIREMENTS			Units
			Foundational Limit	Progressive Limit	Aspirational Limit	
Conventional Parameters						
Temperature	-	USEPA 170.1 or GB/T 13195	Δ15 / max.35	Δ10 or 30	Δ5 or 25	°C
TSS	-	USEPA 160.2, APHA 2540D, ISO 11923 or GB/T 11901	50	15	5	mg/L
COD	-	USEPA 410.4, APHA 5220D, ISO 6060 or HJ 828	150	80	40	mg/L
Total Nitrogen (Total-N)	-	USEPA 351.2, APHA 4500P-J, APHA 4500N-C, ISO 5663, ISO 29441, HJ 636	20	10	5	mg/L
pH Value	-	USEPA 150.1, APHA 4500-H+, ISO 10523 or GB/T 6920	6-9	6-9	6-9	-
Colour (436nm; 525nm; 620nm)	-	ISO 7887 (Method B)	7; 5; 3	5; 3; 2	2; 1; 1	m ⁻¹
Colour	-	GB 11903-1989	-	-	-	-
BOD (5-day)	-	USEPA 405.1, APHA 5210B, ISO 5815-1 or HJ 505	30	15	5	mg/L
Ammonium Nitrogen (Ammonium-N)	-	USEPA 350.1, APHA 4500NH3-N, ISO 7150, ISO 11732, HJ 535 or HJ 536	10	1	0.5	mg/L
Total Phosphorus (Total-P)	-	USEPA 365.4, APHA 4500P-J, ISO 6878, ISO 11885 or GB/T 11893	3	0.5	0.1	mg/L
AOX	-	USEPA 1650, ISO 9562, HJ/T 83	5	1.0	0.1	mg/L
Oil and Grease	-	USEPA 1664, ISO 9377-2, HJ 637	10	2	0.5	mg/L
Phenol	-	APHA 5530 B, C & D, ISO 14402 or HJ 503	0.5	0.01	0.001	mg/L
Coliform	-	USEPA 9132, ISO 9308 or GB/T 5750.12	400	100	25	Bacteria / 100ml
Persistent Foam	-	N/A	Not visible	Not visible	Not visible	-
Anions						
Cyanide	-	USEPA 335.2, APHA 4500-CN, HJ 484	0.2	0.1	0.05	mg/L
Sulfide	-	APHA 4500-S2-D, ISO 10530 or GB/T 16489	0.5	0.05	0.01	mg/L
Sulfite	-	USEPA 377.1, ISO10304-3 or HJ 84	2	0.5	0.2	mg/L
Metals						
Total Antimony (Sb)	7440-36-0		0.1		0.01	mg/L
Total Chromium (Cr)	7440-47-3		0.2	0.1	0.05	mg/L
Total Cobalt (Co)	7440-48-4		0.05	0.02	0.01	mg/L
Total Copper (Cu)	7440-50-8		1	0.5	0.25	mg/L
Total Nickel (Ni)	7440-02-0	With reference to USEPA 200.7, USEPA 200.8, USEPA 6010C, USEPA 6020A, ISO 11885, HJ 700 or Acid Digestion followed by ICP or ICP/MS analysis	0.2	0.1	0.05	mg/L
Total Silver (Ag)	7440-22-4		0.1	0.05	0.005	mg/L
Total Zinc (Zn)	7440-66-6		5	1	0.5	mg/L
Total Arsenic (As)	7440-38-2		0.05	0.01	0.005	mg/L
Total Cadmium (Cd)	7440-43-9		0.1	0.05	0.01	mg/L
Hexavalent Chromium (Cr-VI)	7440-47-3, 18540-29-9	With reference to USEPA 218.6, ISO 18412, GB 7467 or Solvent extraction and derivatisation followed by UV/Vis analysis	0.05	0.005	0.001	mg/L
Total Lead (Pb)	7439-92-1	With reference to USEPA 200.7, USEPA 200.8, USEPA 6010C, USEPA 6020A, ISO 11885, HJ 700 or Acid Digestion followed by ICP or ICP/MS analysis	0.1	0.05	0.01	mg/L
Total Mercury (Hg)	7439-97-6		0.01	0.005	0.001	mg/L

TEST PARAMETERS

Factory Name: Carreman (Wenshang) Fabric Co., Ltd.

Factory Address: North of Quanhe Road, West of Shuguang Road, South of Chenxin Road, \

ITEMS	CAS No.	METHODS	ZDHC REQUIREMENTS			Units
			Foundational Limit	Progressive Limit	Aspirational Limit	
Alkylphenols (APs) and Alkylphenol Ethoxylates (APEOs)						
NP / OP		With reference to ISO 18857-2 or ASTM D7065 followed by GC/MS or LC/MS analysis		-		
NPEO / OPEO		With reference to ISO 18254-1, ISO 18857-2 or ASTM D7065 followed by GC/MS or LC/MS analysis				
Chlorobenzenes and Chlorotoluenes (COCs)		With reference to USEPA 8260B, USEPA 8270D or solvent extraction followed by GC/MS analysis		-		
Chlorophenols		With reference to USEPA 8270D, ISO 14154 or solvent extraction and derivatisation with KOH, acetic anhydride followed by GC/MS analysis.		-		
Azo Dyes		With reference to USEPA 8270D, EN 14362-1, EN 14362-3 or Solvent extraction with sodium dithionite reduction followed by GC/MS and HPLC analysis.		-		
Carcinogenic Dyes		Solvent extraction followed by LC/MS analysis.		-		
Disperse Dyes		Solvent extraction followed by LC/MS analysis.		-		
Flame Retardants		With reference to USEPA 527, USEPA 8270, USEPA 8321B, ISO 22032 or solvent extraction followed by GC/MS or LC/MS analysis		-		
Glycols		With reference to USEPA 8270D or solvent extraction followed by GC/MS or LC/MS analysis		-		
Halogenated Solvents		With reference to USEPA 8260B, Purge&Trap, Head-space or Solvent extraction followed by GC/MS analysis		-		
Organotin Compounds		With reference to ISO17353 and derivatisation with sodium diethyl dithiocarbamate followed by GC/MS analysis.		-		
Perfluorinated / Polyfluorinated Chemicals (PFCs)						
FTOHs		With reference to DIN38407-42 or CEN/TS 15968 and derivatisation with acetic anhydride followed by GC/MS analysis.		-		
Others		With reference to DIN38407-42 or CEN/TS 15968 and followed by LCMS or LC/MS/MS analysis				
Phthalates		With reference to USEPA 8270D, ISO 18856, or solvent extraction followed by GC/MS analysis		-		
Polycyclic Aromatic Hydrocarbons (PAHs)		With reference to USEPA 8270, DIN 38407-39 or solvent extraction followed by GC/MS analysis		-		
Volatile Organic Compounds (VOCs)		With reference to USEPA 8260B, ISO 11423-1, Purge&Trap, Head-space or Solvent extraction followed by GC/MS analysis		-		

PIPING PLAN

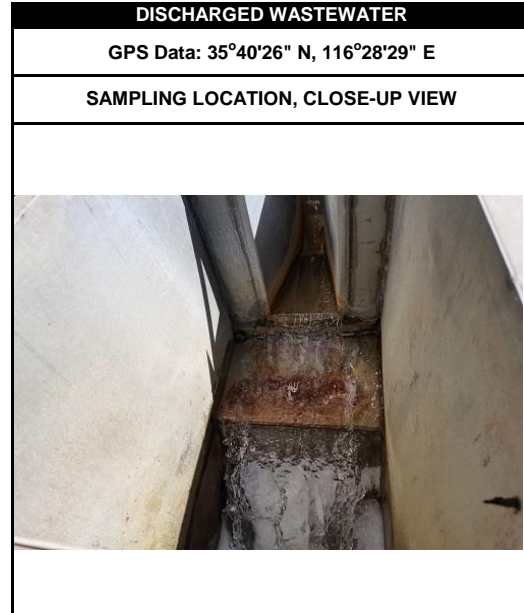
Factory Name: Carreman (Wenshang) Fabric Co., Ltd.
Factory Address: North of Quanhe Road, West of Shuguang Road, South of
Chenxin Road, Wenshang Economic Development Zone, Shandong Province,



Remark:
1:Incoming water
2:Discharged waste water
3:Raw waste water

SAMPLING PHOTOS

Factory Name: Carreman (Wenshang) Fabric Co., Ltd.
Factory Address: North of Quanhe Road, West of Shuguang Road,
South of Chenxin Road, Wenshang Economic Development Zone,



SAMPLING PHOTOS

Factory Name: Carreman (Wenshang) Fabric Co., Ltd.
Factory Address: North of Quanhe Road, West of Shuguang Road,
South of Chenxin Road, Wenshang Economic Development Zone,

RAW WASTEWATER

GPS Data: 35°40'27" N, 116°28'31" E

SAMPLING LOCATION, CLOSE-UP VIEW



SAMPLING LOCATION, FAR VIEW



REGULATORY REQUIREMENTS BASED ON FACTORY DISCHARGE LICENCE

Factory Name: Carreman (Wenshang) Fabric Co., Ltd.
Factory Address: North of Quanhe Road, West of Shuguang Road, South of
Chenxin Road, Wenshang Economic Development Zone, Shandong Province,

1、废水污染物排放许可限值

(1) 主要排放口

排放口编号	排放口名称	污染物种类	许可排放浓度限值 (mg/L)
DW001	厂区废水排放口	流量	/
DW001	厂区废水排放口	五日生化需氧量	350mg/L
DW001	厂区废水排放口	悬浮物	400mg/L
DW001	厂区废水排放口	化学需氧量	500mg/L
DW001	厂区废水排放口	总磷 (以P计)	3mg/L
DW001	厂区废水排放口	总氮 (以N计)	40mg/L
DW001	厂区废水排放口	氨氮 (NH ₃ -N)	45mg/L
DW001	厂区废水排放口	pH值	6.5-9.5
DW001	厂区废水排放口	色度	64

***** END OF REPORT *****