

## TEST REPORT

**CLIENT DETAILS**

**Client Name:** Parvathi Dyeing  
**Client Contact:** S.Tamilselvan  
**Telephone:** +91 9944413885  
**Email:** [parvathidyeing@gmail.com](mailto:parvathidyeing@gmail.com)  
**Address:** S.F.No.223, Palladam Road,  
 Kunnankalpalayam, Veerapandi (P.O),  
 Tirupur - 641605

**LABORATORY DETAILS**

**SGS Affiliate:** SGS India Pvt Ltd., Chennai  
**SGS Contact:** Balla Suresh Kumar  
**Telephone:** +91 9840830472  
**Email:** [balla.sureshkumar@sgs.com](mailto:balla.sureshkumar@sgs.com)  
**Address:** 28 B/1(SP), 28B/2 (SP),  
 Second Main Road, Ambattur  
 Ind. Est., Ambattur,Chennai-  
 58.

**FACTORY DETAILS**

**Factory Name:** Parvathi Dyeing  
**Factory Contact:** S.Tamilselvan  
**Telephone:** +91 9944413885  
**Email:** [parvathidyeing@gmail.com](mailto:parvathidyeing@gmail.com)  
**Address:** S.F.No.223, Palladam Road, Kunnankalpalayam, Veerapandi (P.O), Tirupur - 641605  
**Discharge Destination** Zero Liquid Discharge Treatment  
**Types of Mills:** (3) Fabric Dyeing, Finishing, Washing

**SAMPLE AND TESTING DETAILS**

**Sampling Country:** SGS India Pvt. Ltd.,  
**Sampling Engineer / ZDHC Sampler's Certification No.:** A.Ramesh (8F146507484)  
**Sampling Date:** 30-11-2021  
**Sample Received Date:** 01-12-2021  
**Test Performing Period:** 01-12-2021 - 13-12-2021  
**No. of Samples:** Water (1); Sludge (1)  
**Sample Descriptions:** 1) Raw Wastewater (6-hour Composite)  
 2) Sludge (Grab)  
**Sample Volume** 8L Water sample; 1Kg Sludge  
**Testing Institute:** SGS India Pvt. Ltd., Chennai CRS Lab/Multilab  
**Discharge Method:** Zero Liquid Discharge

**OVERALL RESULTS**

	Raw Wastewater	Sludge
<b>Anions / Metals:</b>	Fulfill Aspirational Limit	Not Detected
<b>MRSL Parameters:</b>	Not Detected	Not Detected

**REMARKS**

1. This test document cannot be reproduced in any way, except in full content, without prior approval in writing by the laboratory.
2. The results shown in this test report refer only to the sampling and the sample(s) tested unless otherwise stated.

**Per pro SGS India Private Ltd**

**P.SHANMUGAM  
 EXECUTIVE**
**Email your Test Report Related Enquiries at [Feedback.SLT@sgs.com](mailto:Feedback.SLT@sgs.com)**
**JOE No. : 2142823400**
**Control No:124250876**

This document is issued by the Company under its General Conditions of Service printed overleaf or available on request and accessible at [http://www.sgs.com/terms\\_and\\_conditions.htm](http://www.sgs.com/terms_and_conditions.htm) and and Terms and Conditions for electronic documents [www.sgs.com/terms\\_e-document.htm](http://www.sgs.com/terms_e-document.htm). Attention is drawn to the limitation of liability, indemnification and jurisdiction issues defined therein. Any holder of this document is advised that information contained hereon reflects the Company's findings at the time of its intervention only and within the limits of Client's instructions, if any. The Company's sole responsibility is to its Client and this document does not exonerate parties to a transaction from exercising all their rights and obligations under the transaction documents. Any unauthorized alteration, forgery or falsification of the content or appearance of this document is unlawful and offenders may be prosecuted to the fullest extent of the law. Unless otherwise stated the results shown in this test report refer only to the sample(s) tested and such sample(s) are retained for 30 days only. This document cannot be reproduced except in full, without prior approval of the Company.

**RESULT SUMMARY**

Factory Name: Parvathi Dyeing  
 Factory Address: S.F.No.223, Palladam Road,  
 Kunnankalpalayam, Veerapandi (P.O), Tirupur - 641605

TEST ITEMS	Raw Wastewater	Sludge
Anions	-	○
Metals	○	○
Alkylphenol (AP) & Alkylphenol Ethoxylates (APEOs)	○	○
Chlorobenzenes and Chlorotoluenes	○	○
Chlorophenols	○	○
Dyes - Azo (Forming Restricted Amines)	○	○
Dyes - Carcinogenic or Equivalent Concern	○	○
Dyes - Disperse (Sensitising)	○	○
Flame Retardants	○	○
Glycols	○	○
Halogenated Solvents	○	○
Organotin Compounds	○	○
Perfluorinated and Polyfluorinated Chemicals (PFCs)	○	○
Ortho-Phthalates	○	○
Polycyclic Aromatic Hydrocarbons (PAHs)	○	○
Volatile Organic Compounds (VOCs)	○	○

Note:

X - Detected

○ - Not Detected

N/A - Not Tested

This document is issued by the Company under its General Conditions of Service printed overleaf or available on request and accessible at [http://www.sgs.com/terms\\_and\\_conditions.htm](http://www.sgs.com/terms_and_conditions.htm) and and Terms and Conditions for electronic documents [www.sgs.com/terms\\_e-document.htm](http://www.sgs.com/terms_e-document.htm). Attention is drawn to the limitation of liability, indemnification and jurisdiction issues defined therein. Any holder of this document is advised that information contained hereon reflects the Company's findings at the time of its intervention only and within the limits of Client's instructions, if any. The Company's sole responsibility is to its Client and this document does not exonerate parties to a transaction from exercising all their rights and obligations under the transaction documents. Any unauthorized alteration, forgery or falsification of the content or appearance of this document is unlawful and offenders may be prosecuted to the fullest extent of the law. Unless otherwise stated the results shown in this test report refer only to the sample(s) tested and such sample(s) are retained for 30 days only. This document cannot be reproduced except in full, without prior approval of the Company.

**TEST RESULTS**

Factory Name: Parvathi Dyeing

Factory Address: S.F.No.223, Palladam Road, Kunnankalpalayam, Veerapandi (P.O), Tirupur - 641605

		Sample ID	1242044152 (A)	-	-	1242044152 (B)	Factory Performances		
		Date of Sampling	30-11-2021	-	-	30-11-2021			
		Sampling Location	Waste Water Before Treatment - Pipe Line	-	-	Sludge - Filter press			
		Sampling Start Time	10:00	-	-	15:30			
		Sampling End Time	16:00	-	-	15:45			
		Date of Sample Received	01-12-2021	-	-	01-12-2021			
Items	CAS No.	Reporting Limit	Units	Raw Wastewater	Reporting Limit	Units	Sludge $\Phi$	Raw Wastewater	Sludge
Sample Colour Description	-	-	-	Blue	-	-	Pale brown	-	-
<b>Anions</b>									
Cyanide	-	0.05	mg/L	-	1	mg/kg	n.d.	-	Not Detected
<b>Metals</b>									
Total Antimony (Sb)*	7440-36-0	0.01	mg/L	n.d.	-	-	-	Fulfill Aspirational Limit	-
Total Chromium (Cr)	7440-47-3	0.05	mg/L	n.d.	-	-	-	Fulfill Aspirational Limit	-
Total Cobalt (Co)	7440-48-4	0.01	mg/L	n.d.	-	-	-	Fulfill Aspirational Limit	-
Total Copper (Cu)	7440-50-8	0.25	mg/L	n.d.	-	-	-	Fulfill Aspirational Limit	-
Total Nickel (Ni)	7440-02-0	0.05	mg/L	n.d.	-	-	-	Fulfill Aspirational Limit	-
Total Silver (Ag)	7440-22-4	0.005	mg/L	n.d.	-	-	-	Fulfill Aspirational Limit	-
Total Zinc (Zn)	7440-66-6	0.5	mg/L	n.d.	-	-	-	Fulfill Aspirational Limit	-
Total Arsenic (As)	7440-38-2	0.005	mg/L	n.d.	2	mg/kg	n.d.	Fulfill Aspirational Limit	Not Detected
Total Cadmium (Cd)	7440-43-9	0.01	mg/L	n.d.	2	mg/kg	n.d.	Fulfill Aspirational Limit	Not Detected
Chromium-Hexavalent (Cr-VI)	7440-47-3, 18540-29-9	0.001	mg/L	n.d.	2	mg/kg	n.d.	Fulfill Aspirational Limit	Not Detected
Total Lead (Pb)	7439-92-1	0.01	mg/L	n.d.	2	mg/kg	n.d.	Fulfill Aspirational Limit	Not Detected
Total Mercury (Hg)	7439-97-6	0.001	mg/L	n.d.	0.2	mg/kg	n.d.	Fulfill Aspirational Limit	Not Detected
<b>Alkylphenol (AP) &amp; Alkylphenol Ethoxylates (APEOs)</b>									
Nonylphenol (NP), mixed isomers	Multiple, including 104-40-5, 11066-49-2, 25154-52-3, 84852-15-3, 90481-04-2, 1173019-62-9	5	$\mu$ g/L	n.d.	0.4	mg/kg	n.d.	Not Detected	Not Detected
Octylphenol (OP), mixed isomers	Multiple, including 140-66-9, 1806-26-4, 27193-28-8	5	$\mu$ g/L	n.d.	0.4	mg/kg	n.d.	Not Detected	Not Detected
Octylphenol ethoxylates (OPEO)	Multiple, including 9002-93-1, 9036-19-5, 68987-90-6	5	$\mu$ g/L	n.d.	0.4	mg/kg	n.d.	Not Detected	Not Detected
Nonylphenol ethoxylates (NPEO)	Multiple, including 9016-45-9, 26027-38-3, 37205-87-1, 68412-54-4, 127087-87-0	5	$\mu$ g/L	n.d.	0.4	mg/kg	n.d.	Not Detected	Not Detected
<b>Chlorobenzenes &amp; Chlorotoluenes</b>									
Monochlorobenzenes	108-90-7	0.2	$\mu$ g/L	n.d.	0.2	mg/kg	n.d.	Not Detected	Not Detected
1,2-Dichlorobenzene	95-50-1	0.2	$\mu$ g/L	n.d.	0.2	mg/kg	n.d.	Not Detected	Not Detected
1,3-Dichlorobenzene	541-73-1	0.2	$\mu$ g/L	n.d.	0.2	mg/kg	n.d.	Not Detected	Not Detected

This document is issued by the Company under its General Conditions of Service printed overleaf or available on request and accessible at [http://www.sgs.com/terms\\_and\\_conditions.htm](http://www.sgs.com/terms_and_conditions.htm) and and Terms and Conditions for electronic documents [www.sgs.com/terms\\_e-document.htm](http://www.sgs.com/terms_e-document.htm). Attention is drawn to the limitation of liability, indemnification and jurisdiction issues defined therein. Any holder of this document is advised that information contained hereon reflects the Company's findings at the time of its intervention only and within the limits of Client's instructions, if any. The Company's sole responsibility is to its Client and this document does not exonerate parties to a transaction from exercising all their rights and obligations under the transaction documents. Any unauthorized alteration, forgery or falsification of the content or appearance of this document is unlawful and offenders may be prosecuted to the fullest extent of the law. Unless otherwise stated the results shown in this test report refer only to the sample(s) tested and such sample(s) are retained for 30 days only. This document cannot be reproduced except in full, without prior approval of the Company.

**TEST RESULTS**

Factory Name: Parvathi Dyeing

Factory Address: S.F.No.223, Palladam Road, Kunnankalpalayam, Veerapandi (P.O), Tirupur - 641605

		Sample ID	1242044152 (A)	-	-	1242044152 (B)	Factory Performances		
		Date of Sampling	30-11-2021	-	-	30-11-2021			
		Sampling Location	Waste Water Before Treatment - Pipe Line	-	-	Sludge - Filter press			
		Sampling Start Time	10:00	-	-	15:30			
		Sampling End Time	16:00	-	-	15:45			
		Date of Sample Received	01-12-2021	-	-	01-12-2021			
Items	CAS No.	Reporting Limit	Units	Raw Wastewater	Reporting Limit	Units	SludgeΦ	Raw Wastewater	Sludge
1,4-Dichlorobenzene	106-46-7	0.2	µg/L	n.d.	0.2	mg/kg	n.d.	Not Detected	Not Detected
1,2,3-Trichlorobenzene	87-61-6	0.2	µg/L	n.d.	0.2	mg/kg	n.d.	Not Detected	Not Detected
1,2,4-Trichlorobenzene	120-82-1	0.2	µg/L	n.d.	0.2	mg/kg	n.d.	Not Detected	Not Detected
1,3,5-Trichlorobenzene	108-70-3	0.2	µg/L	n.d.	0.2	mg/kg	n.d.	Not Detected	Not Detected
1,2,3,4-Tetrachlorobenzene	634-66-2	0.2	µg/L	n.d.	0.2	mg/kg	n.d.	Not Detected	Not Detected
1,2,3,5-Tetrachlorobenzene	634-90-2	0.2	µg/L	n.d.	0.2	mg/kg	n.d.	Not Detected	Not Detected
1,2,4,5-Tetrachlorobenzene	95-94-3	0.2	µg/L	n.d.	0.2	mg/kg	n.d.	Not Detected	Not Detected
Pentachlorobenzene	608-93-5	0.2	µg/L	n.d.	0.2	mg/kg	n.d.	Not Detected	Not Detected
Hexachlorobenzene	118-74-1	0.2	µg/L	n.d.	0.2	mg/kg	n.d.	Not Detected	Not Detected
2-Chlorotoluene	95-49-8	0.2	µg/L	n.d.	0.2	mg/kg	n.d.	Not Detected	Not Detected
3-Chlorotoluene	108-41-8	0.2	µg/L	n.d.	0.2	mg/kg	n.d.	Not Detected	Not Detected
4-Chlorotoluene	106-43-4	0.2	µg/L	n.d.	0.2	mg/kg	n.d.	Not Detected	Not Detected
2,3-Dichlorotoluene	32768-54-0	0.2	µg/L	n.d.	0.2	mg/kg	n.d.	Not Detected	Not Detected
2,4-Dichlorotoluene	95-73-8	0.2	µg/L	n.d.	0.2	mg/kg	n.d.	Not Detected	Not Detected
2,5-Dichlorotoluene	19398-61-9	0.2	µg/L	n.d.	0.2	mg/kg	n.d.	Not Detected	Not Detected
2,6-Dichlorotoluene	118-69-4	0.2	µg/L	n.d.	0.2	mg/kg	n.d.	Not Detected	Not Detected
3,4-Dichlorotoluene	95-75-0	0.2	µg/L	n.d.	0.2	mg/kg	n.d.	Not Detected	Not Detected
3,5-Dichlorotoluene	25186-47-4	0.2	µg/L	n.d.	0.2	mg/kg	n.d.	Not Detected	Not Detected
2,3,4-Trichlorotoluene	7359-72-0	0.2	µg/L	n.d.	0.2	mg/kg	n.d.	Not Detected	Not Detected
2,3,6-Trichlorotoluene	2077-46-5	0.2	µg/L	n.d.	0.2	mg/kg	n.d.	Not Detected	Not Detected
2,4,5-Trichlorotoluene	6639-30-1	0.2	µg/L	n.d.	0.2	mg/kg	n.d.	Not Detected	Not Detected
2,4,6-Trichlorotoluene	23749-65-7	0.2	µg/L	n.d.	0.2	mg/kg	n.d.	Not Detected	Not Detected
3,4,5-Trichlorotoluene	21472-86-6	0.2	µg/L	n.d.	0.2	mg/kg	n.d.	Not Detected	Not Detected

This document is issued by the Company under its General Conditions of Service printed overleaf or available on request and accessible at [http://www.sgs.com/terms\\_and\\_conditions.htm](http://www.sgs.com/terms_and_conditions.htm) and and Terms and Conditions for electronic documents [www.sgs.com/terms\\_e-document.htm](http://www.sgs.com/terms_e-document.htm). Attention is drawn to the limitation of liability, indemnification and jurisdiction issues defined therein. Any holder of this document is advised that information contained hereon reflects the Company's findings at the time of its intervention only and within the limits of Client's instructions, if any. The Company's sole responsibility is to its Client and this document does not exonerate parties to a transaction from exercising all their rights and obligations under the transaction documents. Any unauthorized alteration, forgery or falsification of the content or appearance of this document is unlawful and offenders may be prosecuted to the fullest extent of the law. Unless otherwise stated the results shown in this test report refer only to the sample(s) tested and such sample(s) are retained for 30 days only. This document cannot be reproduced except in full, without prior approval of the Company.

**TEST RESULTS**

Factory Name: Parvathi Dyeing

Factory Address: S.F.No.223, Palladam Road, Kunnankalpalayam, Veerapandi (P.O), Tirupur - 641605

		Sample ID	1242044152 (A)	-	-	1242044152 (B)	Factory Performances		
		Date of Sampling	30-11-2021	-	-	30-11-2021			
		Sampling Location	Waste Water Before Treatment - Pipe Line	-	-	Sludge - Filter press			
		Sampling Start Time	10:00	-	-	15:30			
		Sampling End Time	16:00	-	-	15:45			
		Date of Sample Received	01-12-2021	-	-	01-12-2021			
Items	CAS No.	Reporting Limit	Units	Raw Wastewater	Reporting Limit	Units	SludgeΦ	Raw Wastewater	Sludge
2,3,4,5-Tetrachlorotoluene	76057-12-0	0.2	µg/L	n.d.	0.2	mg/kg	n.d.	Not Detected	Not Detected
2,3,5,6-Tetrachlorotoluene	29733-70-8	0.2	µg/L	n.d.	0.2	mg/kg	n.d.	Not Detected	Not Detected
2,3,4,6-Tetrachlorotoluene	875-40-1	0.2	µg/L	n.d.	0.2	mg/kg	n.d.	Not Detected	Not Detected
Pentachlorotoluene	877-11-2	0.2	µg/L	n.d.	0.2	mg/kg	n.d.	Not Detected	Not Detected
<b>Chlorophenols</b>									
2-Chlorophenol	95-57-8	0.5	µg/L	n.d.	0.05	mg/kg	n.d.	Not Detected	Not Detected
3-Chlorophenol	108-43-0	0.5	µg/L	n.d.	0.05	mg/kg	n.d.	Not Detected	Not Detected
4-Chlorophenol	106-48-9	0.5	µg/L	n.d.	0.05	mg/kg	n.d.	Not Detected	Not Detected
2,3-Dichlorophenol	576-24-9	0.5	µg/L	n.d.	0.05	mg/kg	n.d.	Not Detected	Not Detected
2,4-Dichlorophenol	120-83-2	0.5	µg/L	n.d.	0.05	mg/kg	n.d.	Not Detected	Not Detected
2,5-Dichlorophenol	583-78-8	0.5	µg/L	n.d.	0.05	mg/kg	n.d.	Not Detected	Not Detected
2,6-Dichlorophenol	87-65-0	0.5	µg/L	n.d.	0.05	mg/kg	n.d.	Not Detected	Not Detected
3,4-Dichlorophenol	95-77-2	0.5	µg/L	n.d.	0.05	mg/kg	n.d.	Not Detected	Not Detected
3,5-Dichlorophenol	591-35-5	0.5	µg/L	n.d.	0.05	mg/kg	n.d.	Not Detected	Not Detected
2,3,4-Trichlorophenol	15950-66-0	0.5	µg/L	n.d.	0.05	mg/kg	n.d.	Not Detected	Not Detected
2,3,5-Trichlorophenol	933-78-8	0.5	µg/L	n.d.	0.05	mg/kg	n.d.	Not Detected	Not Detected
2,3,6-Trichlorophenol	933-75-5	0.5	µg/L	n.d.	0.05	mg/kg	n.d.	Not Detected	Not Detected
2,4,5-Trichlorophenol	95-95-4	0.5	µg/L	n.d.	0.05	mg/kg	n.d.	Not Detected	Not Detected
2,4,6-Trichlorophenol	88-06-2	0.5	µg/L	n.d.	0.05	mg/kg	n.d.	Not Detected	Not Detected
3,4,5-Trichlorophenol	609-19-8	0.5	µg/L	n.d.	0.05	mg/kg	n.d.	Not Detected	Not Detected
2,3,4,5-Tetrachlorophenol	4901-51-3	0.5	µg/L	n.d.	0.05	mg/kg	n.d.	Not Detected	Not Detected
2,3,4,6-Tetrachlorophenol	58-90-2	0.5	µg/L	n.d.	0.05	mg/kg	n.d.	Not Detected	Not Detected
2,3,5,6-Tetrachlorophenol	935-95-5	0.5	µg/L	n.d.	0.05	mg/kg	n.d.	Not Detected	Not Detected
Pentachlorophenol	87-86-5	0.5	µg/L	n.d.	0.05	mg/kg	n.d.	Not Detected	Not Detected

This document is issued by the Company under its General Conditions of Service printed overleaf or available on request and accessible at [http://www.sgs.com/terms\\_and\\_conditions.htm](http://www.sgs.com/terms_and_conditions.htm) and and Terms and Conditions for electronic documents [www.sgs.com/terms\\_e-document.htm](http://www.sgs.com/terms_e-document.htm). Attention is drawn to the limitation of liability, indemnification and jurisdiction issues defined therein. Any holder of this document is advised that information contained hereon reflects the Company's findings at the time of its intervention only and within the limits of Client's instructions, if any. The Company's sole responsibility is to its Client and this document does not exonerate parties to a transaction from exercising all their rights and obligations under the transaction documents. Any unauthorized alteration, forgery or falsification of the content or appearance of this document is unlawful and offenders may be prosecuted to the fullest extent of the law. Unless otherwise stated the results shown in this test report refer only to the sample(s) tested and such sample(s) are retained for 30 days only. This document cannot be reproduced except in full, without prior approval of the Company.

**TEST RESULTS**

Factory Name: Parvathi Dyeing

Factory Address: S.F.No.223, Palladam Road, Kunnankalpalayam, Veerapandi (P.O), Tirupur - 641605

		Sample ID	1242044152 (A)	-	-	1242044152 (B)	Factory Performances		
		Date of Sampling	30-11-2021	-	-	30-11-2021			
		Sampling Location	Waste Water Before Treatment - Pipe Line	-	-	Sludge - Filter press			
		Sampling Start Time	10:00	-	-	15:30			
		Sampling End Time	16:00	-	-	15:45			
		Date of Sample Received	01-12-2021	-	-	01-12-2021			
Items	CAS No.	Reporting Limit	Units	Raw Wastewater	Reporting Limit	Units	SludgeΦ	Raw Wastewater	Sludge
<b>Dyes - Azo (Forming Restricted Amines)</b>									
4,4'-Methylene-Bis(2-Chloroaniline)	101-14-4	0.1	µg/L	n.d.	0.2	mg/kg	n.d.	Not Detected	Not Detected
4,4'-Diaminodiphenylmethane	101-77-9	0.1	µg/L	n.d.	0.2	mg/kg	n.d.	Not Detected	Not Detected
4,4'-Oxydianiline	101-80-4	0.1	µg/L	n.d.	0.2	mg/kg	n.d.	Not Detected	Not Detected
p-Chloroaniline	106-47-8	0.1	µg/L	n.d.	0.2	mg/kg	n.d.	Not Detected	Not Detected
3,3'-Dimethoxybenzidine	119-90-4	0.1	µg/L	n.d.	0.2	mg/kg	n.d.	Not Detected	Not Detected
3,3'-Dimethylbenzidine	119-93-7	0.1	µg/L	n.d.	0.2	mg/kg	n.d.	Not Detected	Not Detected
p-Cresidine	120-71-8	0.1	µg/L	n.d.	0.2	mg/kg	n.d.	Not Detected	Not Detected
2,4,5-Trimethylaniline	137-17-7	0.1	µg/L	n.d.	0.2	mg/kg	n.d.	Not Detected	Not Detected
4,4'-Thiodianiline	139-65-1	0.1	µg/L	n.d.	0.2	mg/kg	n.d.	Not Detected	Not Detected
p-Aminoazobenzene	60-09-3	0.1	µg/L	n.d.	0.2	mg/kg	n.d.	Not Detected	Not Detected
2,4-Diaminoanisole	615-05-4	0.1	µg/L	n.d.	0.2	mg/kg	n.d.	Not Detected	Not Detected
3,3'-Dimethyl-4,4'diaminodiphenylmethane	838-88-0	0.1	µg/L	n.d.	0.2	mg/kg	n.d.	Not Detected	Not Detected
2,6-Xylidine	87-62-7	0.1	µg/L	n.d.	0.2	mg/kg	n.d.	Not Detected	Not Detected
o-Anisidine	90-04-0	0.1	µg/L	n.d.	0.2	mg/kg	n.d.	Not Detected	Not Detected
2-Naphthylamine	91-59-8	0.1	µg/L	n.d.	0.2	mg/kg	n.d.	Not Detected	Not Detected
3,3'-Dichlorobenzidine	91-94-1	0.1	µg/L	n.d.	0.2	mg/kg	n.d.	Not Detected	Not Detected
4-Aminodiphenyl	92-67-1	0.1	µg/L	n.d.	0.2	mg/kg	n.d.	Not Detected	Not Detected
Benzidine	92-87-5	0.1	µg/L	n.d.	0.2	mg/kg	n.d.	Not Detected	Not Detected
o-Toluidine	95-53-4	0.1	µg/L	n.d.	0.2	mg/kg	n.d.	Not Detected	Not Detected
2,4-Xylidine	95-68-1	0.1	µg/L	n.d.	0.2	mg/kg	n.d.	Not Detected	Not Detected
4-Chloro-o-Toluidine	95-69-2	0.1	µg/L	n.d.	0.2	mg/kg	n.d.	Not Detected	Not Detected
2,4-Toluylenediamine	95-80-7	0.1	µg/L	n.d.	0.2	mg/kg	n.d.	Not Detected	Not Detected

This document is issued by the Company under its General Conditions of Service printed overleaf or available on request and accessible at [http://www.sgs.com/terms\\_and\\_conditions.htm](http://www.sgs.com/terms_and_conditions.htm) and and Terms and Conditions for electronic documents [www.sgs.com/terms\\_e-document.htm](http://www.sgs.com/terms_e-document.htm). Attention is drawn to the limitation of liability, indemnification and jurisdiction issues defined therein. Any holder of this document is advised that information contained hereon reflects the Company's findings at the time of its intervention only and within the limits of Client's instructions, if any. The Company's sole responsibility is to its Client and this document does not exonerate parties to a transaction from exercising all their rights and obligations under the transaction documents. Any unauthorized alteration, forgery or falsification of the content or appearance of this document is unlawful and offenders may be prosecuted to the fullest extent of the law. Unless otherwise stated the results shown in this test report refer only to the sample(s) tested and such sample(s) are retained for 30 days only. This document cannot be reproduced except in full, without prior approval of the Company.

**TEST RESULTS**

Factory Name: Parvathi Dyeing

Factory Address: S.F.No.223, Palladam Road, Kunnankalpalayam, Veerapandi (P.O), Tirupur - 641605

		Sample ID	1242044152 (A)	-	-	1242044152 (B)	Factory Performances		
		Date of Sampling	30-11-2021	-	-	30-11-2021			
		Sampling Location	Waste Water Before Treatment - Pipe Line	-	-	Sludge - Filter press			
		Sampling Start Time	10:00	-	-	15:30			
		Sampling End Time	16:00	-	-	15:45			
		Date of Sample Received	01-12-2021	-	-	01-12-2021			
Items	CAS No.	Reporting Limit	Units	Raw Wastewater	Reporting Limit	Units	SludgeΦ	Raw Wastewater	Sludge
o-Aminoazotoluene	97-56-3	0.1	µg/L	n.d.	0.2	mg/kg	n.d.	Not Detected	Not Detected
2-Amino-4-Nitrotoluene	99-55-8	0.1	µg/L	n.d.	0.2	mg/kg	n.d.	Not Detected	Not Detected
<b>Dyes - Carcinogenic or Equivalent Concern</b>									
Direct Black 38	1937-37-7	500	µg/L	n.d.	10	mg/kg	n.d.	Not Detected	Not Detected
Direct Blue 6	2602-46-2	500	µg/L	n.d.	10	mg/kg	n.d.	Not Detected	Not Detected
Acid Red 26	3761-53-3	500	µg/L	n.d.	10	mg/kg	n.d.	Not Detected	Not Detected
Basic Red 9	569-61-9	500	µg/L	n.d.	10	mg/kg	n.d.	Not Detected	Not Detected
Direct Red 28	573-58-0	500	µg/L	n.d.	10	mg/kg	n.d.	Not Detected	Not Detected
Basic Violet 14	632-99-5	500	µg/L	n.d.	10	mg/kg	n.d.	Not Detected	Not Detected
Disperse Blue 1	2475-45-8	500	µg/L	n.d.	10	mg/kg	n.d.	Not Detected	Not Detected
Disperse Blue 3	2475-46-9	500	µg/L	n.d.	10	mg/kg	n.d.	Not Detected	Not Detected
Basic Blue 26	2580-56-5	500	µg/L	n.d.	10	mg/kg	n.d.	Not Detected	Not Detected
Basic Green 4 (malachite green chloride)^	569-64-2	500	µg/L	n.d.	10	mg/kg	n.d.	Not Detected	Not Detected
Basic Green 4 (malachite green oxalate)^	2437-29-8	500	µg/L	n.d.	10	mg/kg	n.d.	Not Detected	Not Detected
Basic Green 4 (malachite green)	10309-95-2	500	µg/L	n.d.	10	mg/kg	n.d.	Not Detected	Not Detected
Disperse Orange 11	82-28-0	500	µg/L	n.d.	10	mg/kg	n.d.	Not Detected	Not Detected
<b>Dyes - Disperse (Sensitising)</b>									
Disperse Yellow 1	119-15-3	50	µg/L	n.d.	2	mg/kg	n.d.	Not Detected	Not Detected
Disperse Blue 102	12222-97-8	50	µg/L	n.d.	2	mg/kg	n.d.	Not Detected	Not Detected
Disperse Blue 106	12223-01-7	50	µg/L	n.d.	2	mg/kg	n.d.	Not Detected	Not Detected
Disperse Yellow 39	12236-29-2	50	µg/L	n.d.	2	mg/kg	n.d.	Not Detected	Not Detected
Disperse Orange 37/59/76	13301-61-6	50	µg/L	n.d.	2	mg/kg	n.d.	Not Detected	Not Detected
Disperse Brown 1	23355-64-8	50	µg/L	n.d.	2	mg/kg	n.d.	Not Detected	Not Detected
Disperse Orange 1	2581-69-3	50	µg/L	n.d.	2	mg/kg	n.d.	Not Detected	Not Detected

This document is issued by the Company under its General Conditions of Service printed overleaf or available on request and accessible at [http://www.sgs.com/terms\\_and\\_conditions.htm](http://www.sgs.com/terms_and_conditions.htm) and and Terms and Conditions for electronic documents [www.sgs.com/terms\\_e-document.htm](http://www.sgs.com/terms_e-document.htm). Attention is drawn to the limitation of liability, indemnification and jurisdiction issues defined therein. Any holder of this document is advised that information contained hereon reflects the Company's findings at the time of its intervention only and within the limits of Client's instructions, if any. The Company's sole responsibility is to its Client and this document does not exonerate parties to a transaction from exercising all their rights and obligations under the transaction documents. Any unauthorized alteration, forgery or falsification of the content or appearance of this document is unlawful and offenders may be prosecuted to the fullest extent of the law. Unless otherwise stated the results shown in this test report refer only to the sample(s) tested and such sample(s) are retained for 30 days only. This document cannot be reproduced except in full, without prior approval of the Company.

**TEST RESULTS**

Factory Name: Parvathi Dyeing

Factory Address: S.F.No.223, Palladam Road, Kunnankalpalayam, Veerapandi (P.O), Tirupur - 641605

		Sample ID	1242044152 (A)	-	-	1242044152 (B)	Factory Performances		
		Date of Sampling	30-11-2021	-	-	30-11-2021			
		Sampling Location	Waste Water Before Treatment - Pipe Line	-	-	Sludge - Filter press			
		Sampling Start Time	10:00	-	-	15:30			
		Sampling End Time	16:00	-	-	15:45			
		Date of Sample Received	01-12-2021	-	-	01-12-2021			
Items	CAS No.	Reporting Limit	Units	Raw Wastewater	Reporting Limit	Units	SludgeΦ	Raw Wastewater	Sludge
Disperse Yellow 3	2832-40-8	50	µg/L	n.d.	2	mg/kg	n.d.	Not Detected	Not Detected
Disperse Red 11	2872-48-2	50	µg/L	n.d.	2	mg/kg	n.d.	Not Detected	Not Detected
Disperse Red 1	2872-52-8	50	µg/L	n.d.	2	mg/kg	n.d.	Not Detected	Not Detected
Disperse Red 17	3179-89-3	50	µg/L	n.d.	2	mg/kg	n.d.	Not Detected	Not Detected
Disperse Blue 7	3179-90-6	50	µg/L	n.d.	2	mg/kg	n.d.	Not Detected	Not Detected
Disperse Blue 26	3860-63-7	50	µg/L	n.d.	2	mg/kg	n.d.	Not Detected	Not Detected
Disperse Yellow 49	54824-37-2	50	µg/L	n.d.	2	mg/kg	n.d.	Not Detected	Not Detected
Disperse Blue 35	12222-75-2, 56524-77-7	50	µg/L	n.d.	2	mg/kg	n.d.	Not Detected	Not Detected
Disperse Blue 124	61951-51-7	50	µg/L	n.d.	2	mg/kg	n.d.	Not Detected	Not Detected
Disperse Yellow 9	6373-73-5	50	µg/L	n.d.	2	mg/kg	n.d.	Not Detected	Not Detected
Disperse Orange 3	730-40-5	50	µg/L	n.d.	2	mg/kg	n.d.	Not Detected	Not Detected
<b>Flame Retardants</b>									
Tris(2-chloroethyl) phosphate (TCEP)	115-96-8	5	µg/L	n.d.	1	mg/kg	n.d.	Not Detected	Not Detected
Decabromodiphenyl ethers (DecaBDE)	1163-19-5	5	µg/L	n.d.	1	mg/kg	n.d.	Not Detected	Not Detected
Tris(2,3-dibromopropyl) phosphate (TRIS)	126-72-7	5	µg/L	n.d.	1	mg/kg	n.d.	Not Detected	Not Detected
Pentabromodiphenyl ethers (PentaBDE)	32534-81-9	5	µg/L	n.d.	1	mg/kg	n.d.	Not Detected	Not Detected
Octabromodiphenyl ethers (OctaBDE)	32536-52-0	5	µg/L	n.d.	1	mg/kg	n.d.	Not Detected	Not Detected
Bis(2,3-dibromopropyl)phosphate (BIS)	5412-25-9	5	µg/L	n.d.	1	mg/kg	n.d.	Not Detected	Not Detected
Tris(1-aziridinyl)phosphine oxide (TEPA)	545-55-1	5	µg/L	n.d.	1	mg/kg	n.d.	Not Detected	Not Detected
Polybrominated biphenyls (PBBs)	59536-65-1	5	µg/L	n.d.	1	mg/kg	n.d.	Not Detected	Not Detected
Tetrabromobisphenol A (TBBPA)	79-94-7	5	µg/L	n.d.	1	mg/kg	n.d.	Not Detected	Not Detected
Hexabromocyclododecane (HBCDD)	134237-50-6, 134237-51-7, 134237-52-8, 25637-99-4, 3194-55-6	5	µg/L	n.d.	1	mg/kg	n.d.	Not Detected	Not Detected
2,2-Bis(bromomethyl)-1,3-propanediol (BBMP)	3296-90-0	5	µg/L	n.d.	1	mg/kg	n.d.	Not Detected	Not Detected

This document is issued by the Company under its General Conditions of Service printed overleaf or available on request and accessible at [http://www.sgs.com/terms\\_and\\_conditions.htm](http://www.sgs.com/terms_and_conditions.htm) and and Terms and Conditions for electronic documents [www.sgs.com/terms\\_e-document.htm](http://www.sgs.com/terms_e-document.htm). Attention is drawn to the limitation of liability, indemnification and jurisdiction issues defined therein. Any holder of this document is advised that information contained hereon reflects the Company's findings at the time of its intervention only and within the limits of Client's instructions, if any. The Company's sole responsibility is to its Client and this document does not exonerate parties to a transaction from exercising all their rights and obligations under the transaction documents. Any unauthorized alteration, forgery or falsification of the content or appearance of this document is unlawful and offenders may be prosecuted to the fullest extent of the law. Unless otherwise stated the results shown in this test report refer only to the sample(s) tested and such sample(s) are retained for 30 days only. This document cannot be reproduced except in full, without prior approval of the Company.



**TEST RESULTS**

Factory Name: Parvathi Dyeing

Factory Address: S.F.No.223, Palladam Road, Kunnankalpalayam, Veerapandi (P.O), Tirupur - 641605

		Sample ID	1242044152 (A)	-	-	1242044152 (B)	Factory Performances		
		Date of Sampling	30-11-2021	-	-	30-11-2021			
		Sampling Location	Waste Water Before Treatment - Pipe Line	-	-	Sludge - Filter press			
		Sampling Start Time	10:00	-	-	15:30			
		Sampling End Time	16:00	-	-	15:45			
		Date of Sample Received	01-12-2021	-	-	01-12-2021			
Items	CAS No.	Reporting Limit	Units	Raw Wastewater	Reporting Limit	Units	SludgeΦ	Raw Wastewater	Sludge
Tris(1,3-dichloro-2-propyl) phosphate (TDCPP)	13674-87-8	5	µg/L	n.d.	1	mg/kg	n.d.	Not Detected	Not Detected
Short Chain Chlorinated Paraffins (SCCP), C <sub>10</sub> -C <sub>13</sub>	85535-84-8	5	µg/L	n.d.	1	mg/kg	n.d.	Not Detected	Not Detected
<b>Glycols</b>									
Bis(2-methoxyethyl)-ether	111-96-6	50	µg/L	n.d.	10	mg/kg	n.d.	Not Detected	Not Detected
2-Ethoxyethanol	110-80-5	50	µg/L	n.d.	10	mg/kg	n.d.	Not Detected	Not Detected
2-Ethoxyethyl acetate	111-15-9	50	µg/L	n.d.	10	mg/kg	n.d.	Not Detected	Not Detected
Ethylene glycol dimethyl ether	110-71-4	50	µg/L	n.d.	10	mg/kg	n.d.	Not Detected	Not Detected
2-Methoxyethanol	109-86-4	50	µg/L	n.d.	10	mg/kg	n.d.	Not Detected	Not Detected
2-Methoxyethylacetate	110-49-6	50	µg/L	n.d.	10	mg/kg	n.d.	Not Detected	Not Detected
2-Methoxypropylacetate	70657-70-4	50	µg/L	n.d.	10	mg/kg	n.d.	Not Detected	Not Detected
Triethylene glycol dimethyl ether	112-49-2	50	µg/L	n.d.	10	mg/kg	n.d.	Not Detected	Not Detected
<b>Halogenated Solvents</b>									
1,2-Dichloroethane	107-06-2	1	µg/L	n.d.	2	mg/kg	n.d.	Not Detected	Not Detected
Methylene chloride	75-09-2	1	µg/L	n.d.	2	mg/kg	n.d.	Not Detected	Not Detected
Trichloroethene	79-01-6	1	µg/L	n.d.	2	mg/kg	n.d.	Not Detected	Not Detected
Tetrachloroethene	127-18-4	1	µg/L	n.d.	2	mg/kg	n.d.	Not Detected	Not Detected
<b>Organotin Compounds</b>									
Mono-, di- and tri-methyltin derivatives	Multiple	0.01	µg/L	n.d.	0.2	mg/kg	n.d.	Not Detected	Not Detected
Monomethyltin (MMT)	Multiple	0.01	µg/L	n.d.	0.2	mg/kg	n.d.	Not Detected	Not Detected
Dimethyltin (DMT)	Multiple	0.01	µg/L	n.d.	0.2	mg/kg	n.d.	Not Detected	Not Detected
Trimethyltin (TMT)	Multiple	0.01	µg/L	n.d.	0.2	mg/kg	n.d.	Not Detected	Not Detected
Mono-, di- and tri-butyltin derivatives	Multiple	0.01	µg/L	n.d.	0.2	mg/kg	n.d.	Not Detected	Not Detected
Monobutyltin (MBT)	1118-46-3, 78763-54-9	0.01	µg/L	n.d.	0.2	mg/kg	n.d.	Not Detected	Not Detected
Dibutyltin (DBT)	1002-53-5	0.01	µg/L	n.d.	0.2	mg/kg	n.d.	Not Detected	Not Detected
Tributyltin (TBT)	56573-85-4	0.01	µg/L	n.d.	0.2	mg/kg	n.d.	Not Detected	Not Detected

This document is issued by the Company under its General Conditions of Service printed overleaf or available on request and accessible at [http://www.sgs.com/terms\\_and\\_conditions.htm](http://www.sgs.com/terms_and_conditions.htm) and and Terms and Conditions for electronic documents [www.sgs.com/terms\\_e-document.htm](http://www.sgs.com/terms_e-document.htm). Attention is drawn to the limitation of liability, indemnification and jurisdiction issues defined therein. Any holder of this document is advised that information contained hereon reflects the Company's findings at the time of its intervention only and within the limits of Client's instructions, if any. The Company's sole responsibility is to its Client and this document does not exonerate parties to a transaction from exercising all their rights and obligations under the transaction documents. Any unauthorized alteration, forgery or falsification of the content or appearance of this document is unlawful and offenders may be prosecuted to the fullest extent of the law. Unless otherwise stated the results shown in this test report refer only to the sample(s) tested and such sample(s) are retained for 30 days only. This document cannot be reproduced except in full, without prior approval of the Company.

**TEST RESULTS**

Factory Name: Parvathi Dyeing

Factory Address: S.F.No.223, Palladam Road, Kunnankalpalayam, Veerapandi (P.O), Tirupur - 641605

		Sample ID	1242044152 (A)	-	-	1242044152 (B)	Factory Performances		
		Date of Sampling	30-11-2021	-	-	30-11-2021			
		Sampling Location	Waste Water Before Treatment - Pipe Line	-	-	Sludge - Filter press			
		Sampling Start Time	10:00	-	-	15:30			
		Sampling End Time	16:00	-	-	15:45			
		Date of Sample Received	01-12-2021	-	-	01-12-2021			
Items	CAS No.	Reporting Limit	Units	Raw Wastewater	Reporting Limit	Units	SludgeΦ	Raw Wastewater	Sludge
Mono-, di- and tri-phenyltin derivatives	Multiple	0.01	µg/L	n.d.	0.2	mg/kg	n.d.	Not Detected	Not Detected
Monophenyltin (MPHT)	Multiple	0.01	µg/L	n.d.	0.2	mg/kg	n.d.	Not Detected	Not Detected
Diphenyltin (DPHT)	Multiple	0.01	µg/L	n.d.	0.2	mg/kg	n.d.	Not Detected	Not Detected
Triphenyltin (TPHT)	892-20-6, 668-34-8	0.01	µg/L	n.d.	0.2	mg/kg	n.d.	Not Detected	Not Detected
Mono-, di- and tri-octyltin derivatives	Multiple	0.01	µg/L	n.d.	0.2	mg/kg	n.d.	Not Detected	Not Detected
Monooctyltin (MOT)	15231-57-9	0.01	µg/L	n.d.	0.2	mg/kg	n.d.	Not Detected	Not Detected
Diocetyl tin (DOT)	94410-05-6, 12531-44-4	0.01	µg/L	n.d.	0.2	mg/kg	n.d.	Not Detected	Not Detected
Triocetyl tin (TOT)	Multiple	0.01	µg/L	n.d.	0.2	mg/kg	n.d.	Not Detected	Not Detected
<b>Perfluorinated and Polyfluorinated Chemicals (PFCs)</b>									
PFOS	1763-23-1	0.01	µg/L	n.d.	0.10	mg/kg	n.d.	Not Detected	Not Detected
PFOA	335-67-1	0.01	µg/L	n.d.	0.10	mg/kg	n.d.	Not Detected	Not Detected
PFBS	375-73-5, 59933-66-3, 29420-49-3, 29420-43-3	0.01	µg/L	n.d.	0.10	mg/kg	n.d.	Not Detected	Not Detected
PFHxA	307-24-4	0.01	µg/L	n.d.	0.10	mg/kg	n.d.	Not Detected	Not Detected
8:2 FTOH	678-39-7	1	µg/L	n.d.	1	mg/kg	n.d.	Not Detected	Not Detected
6:2 FTOH	647-42-7	1	µg/L	n.d.	1	mg/kg	n.d.	Not Detected	Not Detected
<b>Ortho-Phthalates</b>									
Di(2-Ethyl Hexyl) Phthalate (DEHP)	117-81-7	10	µg/L	n.d.	2	mg/kg	n.d.	Not Detected	Not Detected
Bis(2-methoxyethyl)phthalate (DMEP)	117-82-8	10	µg/L	n.d.	2	mg/kg	n.d.	Not Detected	Not Detected
Di-N-Octyl Phthalate (DNOP)	117-84-0	10	µg/L	n.d.	2	mg/kg	n.d.	Not Detected	Not Detected
Di-Iso-Decyl Phthalate (DIDP)	26761-40-0, 68515-49-1	10	µg/L	n.d.	2	mg/kg	n.d.	Not Detected	Not Detected
Di-Iso-Nonyl Phthalate (DINP)	28553-12-0, 68515-48-0	10	µg/L	n.d.	2	mg/kg	n.d.	Not Detected	Not Detected
Di-N-Hexyl Phthalate (DNHP)	84-75-3	10	µg/L	n.d.	2	mg/kg	n.d.	Not Detected	Not Detected
Dibutyl Phthalate (DBP)	84-74-2	10	µg/L	n.d.	2	mg/kg	n.d.	Not Detected	Not Detected
Benzyl Butyl Phthalate (BBP)	85-68-7	10	µg/L	n.d.	2	mg/kg	n.d.	Not Detected	Not Detected

This document is issued by the Company under its General Conditions of Service printed overleaf or available on request and accessible at [http://www.sgs.com/terms\\_and\\_conditions.htm](http://www.sgs.com/terms_and_conditions.htm) and and Terms and Conditions for electronic documents [www.sgs.com/terms\\_e-document.htm](http://www.sgs.com/terms_e-document.htm). Attention is drawn to the limitation of liability, indemnification and jurisdiction issues defined therein. Any holder of this document is advised that information contained hereon reflects the Company's findings at the time of its intervention only and within the limits of Client's instructions, if any. The Company's sole responsibility is to its Client and this document does not exonerate parties to a transaction from exercising all their rights and obligations under the transaction documents. Any unauthorized alteration, forgery or falsification of the content or appearance of this document is unlawful and offenders may be prosecuted to the fullest extent of the law. Unless otherwise stated the results shown in this test report refer only to the sample(s) tested and such sample(s) are retained for 30 days only. This document cannot be reproduced except in full, without prior approval of the Company.

**TEST RESULTS**

Factory Name: Parvathi Dyeing

Factory Address: S.F.No.223, Palladam Road, Kunnankalpalayam, Veerapandi (P.O), Tirupur - 641605

		Sample ID	1242044152 (A)	-	-	1242044152 (B)	Factory Performances		
		Date of Sampling	30-11-2021	-	-	30-11-2021			
		Sampling Location	Waste Water Before Treatment - Pipe Line	-	-	Sludge - Filter press			
		Sampling Start Time	10:00	-	-	15:30			
		Sampling End Time	16:00	-	-	15:45			
		Date of Sample Received	01-12-2021	-	-	01-12-2021			
Items	CAS No.	Reporting Limit	Units	Raw Wastewater	Reporting Limit	Units	SludgeΦ	Raw Wastewater	Sludge
Dinonyl phthalate (DNP)	84-76-4	10	µg/L	n.d.	2	mg/kg	n.d.	Not Detected	Not Detected
Diethyl Phthalate (DEP)	84-66-2	10	µg/L	n.d.	2	mg/kg	n.d.	Not Detected	Not Detected
Di-N-Propyl Phthalate (DPRP)	131-16-8	10	µg/L	n.d.	2	mg/kg	n.d.	Not Detected	Not Detected
Di-Iso-Butyl Phthalate (DIBP)	84-69-5	10	µg/L	n.d.	2	mg/kg	n.d.	Not Detected	Not Detected
Dicyclohexyl Phthalate (DCHP)	84-61-7	10	µg/L	n.d.	2	mg/kg	n.d.	Not Detected	Not Detected
Di-Iso-Octyl Phthalate (DIOP)	27554-26-3	10	µg/L	n.d.	2	mg/kg	n.d.	Not Detected	Not Detected
1,2-Benzenedicarboxylic acid, Di-C7-11 Branched and Linear Alkyl Esters (DHNUF)	68515-42-4	10	µg/L	n.d.	2	mg/kg	n.d.	Not Detected	Not Detected
1,2-Benzenedicarboxylic acid, Di-C6-8 Branched Alkyl Esters, C7-rich (DIHP)	71888-89-6	10	µg/L	n.d.	2	mg/kg	n.d.	Not Detected	Not Detected
<b>Polycyclic Aromatic Hydrocarbons (PAHs)</b>									
Bezo[a]pyrene	50-32-8	1	µg/L	n.d.	0.2	mg/kg	n.d.	Not Detected	Not Detected
Anthracene	120-12-7	1	µg/L	n.d.	0.2	mg/kg	n.d.	Not Detected	Not Detected
Pyrene	129-00-0	1	µg/L	n.d.	0.2	mg/kg	n.d.	Not Detected	Not Detected
Benzo[ghi]perylene	191-24-2	1	µg/L	n.d.	0.2	mg/kg	n.d.	Not Detected	Not Detected
Benzo[e]pyrene	192-97-2	1	µg/L	n.d.	0.2	mg/kg	n.d.	Not Detected	Not Detected
Indeno[1,2,3-cd]pyrene	193-39-5	1	µg/L	n.d.	0.2	mg/kg	n.d.	Not Detected	Not Detected
Benzo[j]fluoranthene	205-82-3	1	µg/L	n.d.	0.2	mg/kg	n.d.	Not Detected	Not Detected
Benzo[b]fluoranthene	205-99-2	1	µg/L	n.d.	0.2	mg/kg	n.d.	Not Detected	Not Detected
Fluoranthene	206-44-0	1	µg/L	n.d.	0.2	mg/kg	n.d.	Not Detected	Not Detected
Benzo[k]fluoranthene	207-08-9	1	µg/L	n.d.	0.2	mg/kg	n.d.	Not Detected	Not Detected
Acenaphthylene	208-96-8	1	µg/L	n.d.	0.2	mg/kg	n.d.	Not Detected	Not Detected
Chrysene	218-01-9	1	µg/L	n.d.	0.2	mg/kg	n.d.	Not Detected	Not Detected
Dibenz[a,h]anthracene	53-70-3	1	µg/L	n.d.	0.2	mg/kg	n.d.	Not Detected	Not Detected
Benzo[a]anthracene	56-55-3	1	µg/L	n.d.	0.2	mg/kg	n.d.	Not Detected	Not Detected
Acenaphthene	83-32-9	1	µg/L	n.d.	0.2	mg/kg	n.d.	Not Detected	Not Detected

This document is issued by the Company under its General Conditions of Service printed overleaf or available on request and accessible at [http://www.sgs.com/terms\\_and\\_conditions.htm](http://www.sgs.com/terms_and_conditions.htm) and and Terms and Conditions for electronic documents [www.sgs.com/terms\\_e-document.htm](http://www.sgs.com/terms_e-document.htm). Attention is drawn to the limitation of liability, indemnification and jurisdiction issues defined therein. Any holder of this document is advised that information contained hereon reflects the Company's findings at the time of its intervention only and within the limits of Client's instructions, if any. The Company's sole responsibility is to its Client and this document does not exonerate parties to a transaction from exercising all their rights and obligations under the transaction documents. Any unauthorized alteration, forgery or falsification of the content or appearance of this document is unlawful and offenders may be prosecuted to the fullest extent of the law. Unless otherwise stated the results shown in this test report refer only to the sample(s) tested and such sample(s) are retained for 30 days only. This document cannot be reproduced except in full, without prior approval of the Company.

**TEST RESULTS**

Factory Name: Parvathi Dyeing

Factory Address: S.F.No.223, Palladam Road, Kunnankalpalayam, Veerapandi (P.O), Tirupur - 641605

Sample ID		1242044152 (A)	-	-	1242044152 (B)	Factory Performances			
Date of Sampling		30-11-2021	-	-	30-11-2021				
Sampling Location		Waste Water Before Treatment - Pipe Line	-	-	Sludge - Filter press				
Sampling Start Time		10:00	-	-	15:30				
Sampling End Time		16:00	-	-	15:45				
Date of Sample Received		01-12-2021	-	-	01-12-2021				
Items	CAS No.	Reporting Limit	Units	Raw Wastewater	Reporting Limit	Units	Sludge $\Phi$	Raw Wastewater	Sludge
Phenanthrene	85-01-8	1	$\mu\text{g/L}$	n.d.	0.2	mg/kg	n.d.	Not Detected	Not Detected
Fluorene	86-73-7	1	$\mu\text{g/L}$	n.d.	0.2	mg/kg	n.d.	Not Detected	Not Detected
Naphthalene	91-20-3	1	$\mu\text{g/L}$	n.d.	0.2	mg/kg	n.d.	Not Detected	Not Detected
<b>Volatile Organic Compounds (VOCs)</b>									
Benzene	71-43-2	1	$\mu\text{g/L}$	n.d.	2	mg/kg	n.d.	Not Detected	Not Detected
Xylene	1330-20-7	1	$\mu\text{g/L}$	n.d.	2	mg/kg	n.d.	Not Detected	Not Detected
o-cresol	95-48-7	1	$\mu\text{g/L}$	n.d.	2	mg/kg	n.d.	Not Detected	Not Detected
p-cresol	106-44-5	1	$\mu\text{g/L}$	n.d.	2	mg/kg	n.d.	Not Detected	Not Detected
m-cresol	108-39-4	1	$\mu\text{g/L}$	n.d.	2	mg/kg	n.d.	Not Detected	Not Detected
<b>Additional Parameters</b>									
Dry Mass (Total Solids)	-	-	-	-	-	%	35.2	-	-

**Remarks:**

"n.d." = Not Detected

"N/A" = Not Tested / Not Applicable

"-" = Not Required to be Test

^The test result is based on the calculation of selected element(s) and to the worst-case scenario

@ = The amine was detected according to EN ISO 14362-1:2017 with the reducing agent. A similar result was obtained from the procedure carried out without the reducing agent. According to EN ISO 14362-1:2017 Annex C.2.1.2.2, the amine originated from a source other than azo colorants.

# = The amine was detected according to EN ISO 14362-1:2017 with the reducing agent. Confirmation procedure was carried out without reducing agent, according to EN ISO 14362-1:2017 Annex C.2.1.2.2, the amine originated from azo colorants.

$\Phi$ Sludge results are reported based on dry mass

\*Data collection only for polyester production

\*\*\*\*\*

This document is issued by the Company under its General Conditions of Service printed overleaf or available on request and accessible at [http://www.sgs.com/terms\\_and\\_conditions.htm](http://www.sgs.com/terms_and_conditions.htm) and and Terms and Conditions for electronic documents [www.sgs.com/terms\\_e-document.htm](http://www.sgs.com/terms_e-document.htm). Attention is drawn to the limitation of liability, indemnification and jurisdiction issues defined therein. Any holder of this document is advised that information contained hereon reflects the Company's findings at the time of its intervention only and within the limits of Client's instructions, if any. The Company's sole responsibility is to its Client and this document does not exonerate parties to a transaction from exercising all their rights and obligations under the transaction documents. Any unauthorized alteration, forgery or falsification of the content or appearance of this document is unlawful and offenders may be prosecuted to the fullest extent of the law. Unless otherwise stated the results shown in this test report refer only to the sample(s) tested and such sample(s) are retained for 30 days only. This document cannot be reproduced except in full, without prior approval of the Company.

**TEST PARAMETERS**

Factory Name: Parvathi Dyeing

Factory Address: S.F.No.223, Palladam Road, Kunnankalpalayam, Veerapandi (P.O), Tirupur - 641605

ITEMS	CAS No.	METHODS	ZDHC REQUIREMENTS			Units
			Foundational Limit	Progressive Limit	Aspirational Limit	
<b>Anions</b>						
Cyanide	-	<u>Wastewater:</u> USEPA 335.2, APHA 4500-CN, ISO 6703-1, 2, 3, ISO 14403-1, 2 or HJ 484 <u>Sludge:</u> With reference to USEPA 9013, USEPA 9014, USEPA 9213, ISO 11262, HJ 745 or CN converted to HCN by reflux-distillation to NaOH followed by colourimetry or ISE	0.2	0.1	0.05	mg/L
<b>Metals</b>						
Total Antimony (Sb)	7440-36-0		0.1	0.05	0.01	mg/L
Total Chromium (Cr)	7440-47-3		0.2	0.1	0.05	mg/L
Total Cobalt (Co)	7440-48-4	<u>Wastewater:</u> With reference to USEPA 200.7, USEPA 200.8, USEPA 245.1, USEPA 245.2, USEPA 1631 E, USEPA 6010C, USEPA 6020A, ISO 11885, ISO 12846, ISO 17294, ISO 17852, ISO 18412, GB 7466, GB 7467, GB 7472, GB 7475, GB 11907, HJ 597, HJ 694, HJ 700, IS 3025 (Part 2), IS 3025 (Part 41), IS 3025 (Part 42), IS 3025 (Part 47), IS 3025 (Part 48), IS 3025 (Part 49), IS 3025 (Part 52), IS 3025 (Part 54), IS 3025 (Part 65) or acid digestion followed by ICP or ICP/MS analysis	0.05	0.02	0.01	mg/L
Total Copper (Cu)	7440-50-8		1	0.5	0.25	mg/L
Total Nickel (Ni)	7440-02-0		0.2	0.1	0.05	mg/L
Total Silver (Ag)	7440-22-4	<u>Sludge:</u> With reference to USEPA 3050, USEPA 3051A, USEPA 3060A, USEPA 6010D, USEPA 6020B, USEPA 7471B or acid/peroxide digestion followed by ICP or ICP/MS analysis	0.1	0.05	0.005	mg/L
Total Zinc (Zn)	7440-66-6		5.0	1.0	0.5	mg/L
Total Arsenic (As)	7440-38-2		0.05	0.01	0.005	mg/L
Total Cadmium (Cd)	7440-43-9		0.1	0.05	0.01	mg/L
Total Lead (Pb)	7439-92-1	<u>Wastewater:</u> With reference to USEPA 200.7, USEPA 200.8, USEPA 245.1, USEPA 245.2, USEPA 1631 E, USEPA 6010C, USEPA 6020A, ISO 11885, ISO 12846, ISO 17294, ISO 17852, ISO 18412, GB 7466, GB 7467, GB 7472, GB 7475, GB 11907, HJ 597, HJ 694, HJ 700, IS 3025 (Part 2), IS 3025 (Part 41), IS 3025 (Part 42), IS 3025 (Part 47), IS 3025 (Part 48), IS 3025 (Part 49), IS 3025 (Part 52), IS 3025 (Part 54), IS 3025 (Part 65) or acid digestion followed by ICP or ICP/MS analysis	0.1	0.05	0.01	mg/L
Total Mercury (Hg)	7439-97-6	<u>Sludge:</u> With reference to USEPA 3050, USEPA 3051A, USEPA 3060A, USEPA 6010D, USEPA 6020B, USEPA 7471B or acid/peroxide digestion followed by ICP or ICP/MS analysis	0.01	0.005	0.001	mg/L
Chromium-Hexavalent (Cr-VI)	7440-47-3, 18540-29-9	<u>Wastewater:</u> With reference to USEPA 218.6, ISO 18412, GB 7467, IS 3025 (Part 52) or solvent extraction and derivatisation followed by UV/VIS analysis <u>Sludge:</u> With reference to USEPA 3060A, USEPA 7196, USEPA 7199 or alkaline digestion followed by colourimetric UV/VIS or colourimetric IC analysis	0.05	0.005	0.001	mg/L
<b>Alkylphenol (AP) &amp; Alkylphenol Ethoxylates (APEOs)</b>						
NP / OP		<u>Wastewater:</u> With reference to ISO 18857-2 or ASTM D7065 followed by GC/MS or LC/MS(-MS) analysis <u>Sludge:</u> With reference to USEPA 3540/3541, USEPA 3550, USEPA 3560, ISO 18857-2 or ASTM D7065 followed by GC/MS or LC/MS analysis				
NPEO / OPEO		<u>Wastewater:</u> With reference to ISO 18254-1, ISO 18857-2 or ASTM D7065 followed by GC/MS or LC/MS analysis <u>Sludge:</u> With reference to ISO 18254-1, ISO 18857-2 or ASTM D7065 followed by GC/MS or LC/MS analysis				

This document is issued by the Company under its General Conditions of Service printed overleaf or available on request and accessible at [http://www.sgs.com/terms\\_and\\_conditions.htm](http://www.sgs.com/terms_and_conditions.htm) and and Terms and Conditions for electronic documents [www.sgs.com/terms\\_e-document.htm](http://www.sgs.com/terms_e-document.htm). Attention is drawn to the limitation of liability, indemnification and jurisdiction issues defined therein. Any holder of this document is advised that information contained hereon reflects the Company's findings at the time of its intervention only and within the limits of Client's instructions, if any. The Company's sole responsibility is to its Client and this document does not exonerate parties to a transaction from exercising all their rights and obligations under the transaction documents. Any unauthorized alteration, forgery or falsification of the content or appearance of this document is unlawful and offenders may be prosecuted to the fullest extent of the law. Unless otherwise stated the results shown in this test report refer only to the sample(s) tested and such sample(s) are retained for 30 days only. This document cannot be reproduced except in full, without prior approval of the Company.

**TEST PARAMETERS**

Factory Name: Parvathi Dyeing

Factory Address: S.F.No.223, Palladam Road, Kunnankalpalayam, Veerapandi (P.O), Tirupur - 641605

ITEMS	CAS No.	METHODS	ZDHC REQUIREMENTS			Units
			Foundational Limit	Progressive Limit	Aspirational Limit	
<b>Chlorobenzenes &amp; Chlorotoluenes</b>		<u>Wastewater:</u> With reference to USEPA 8260B, USEPA 8270D or solvent extraction followed by GC/MS analysis <u>Sludge:</u> With reference to USEPA 3540/3541, USEPA 3550, USEPA 3560, USEPA 3650, USEPA 8270 or solvent extraction followed by GC/MS analysis		-		
<b>Chlorophenols</b>		<u>Wastewater:</u> With reference to USEPA 8270D, ISO 14154:2005 or solvent extraction and derivatisation with KOH, acetic anhydride followed by GC/MS analysis <u>Sludge:</u> With reference to ISO 14154, acid/base liquid extraction, acetylation or liquid/liquid extraction followed by GC/MS analysis		-		
<b>Dyes - Azo (Forming Restricted Amines)</b>		<u>Wastewater:</u> With reference to EN 14362-1, EN 14362-3 or solvent extraction with sodium dithionite reduction followed by GC/MS or LC/MS analysis <u>Sludge:</u> With reference to ISO 14362-1, ISO 14362-3 or solvent extraction with sodium dithionite reduction followed by GC/MS or LC/MS analysis		-		
<b>Dyes - Carcinogenic or Equivalent Concern</b>		<u>Wastewater:</u> Solvent extraction followed by LC/MS analysis <u>Sludge:</u> With reference to ISO 16373 or solvent extraction followed by LC/MS analysis		-		
<b>Dyes - Disperse (Sensitising)</b>		<u>Wastewater:</u> Solvent extraction followed by LC/MS analysis <u>Sludge:</u> With reference to ISO 16373 or solvent extraction followed by LC/MS analysis		-		
<b>Flame Retardants</b>		<u>Wastewater:</u> With reference to USEPA 527, USEPA 8270, USEPA 8321B, ISO 22032 or solvent extraction followed by GC/MS or LC/MS analysis <u>Sludge:</u> With reference to ISO 22032 or solvent extraction followed by GC/MS or LC/MS analysis		-		
<b>Glycols</b>		<u>Wastewater:</u> With reference to USEPA 8270 or solvent extraction followed by GC/MS or LC/MS analysis <u>Sludge:</u> With reference to USEPA 8270D, ISO 22892 or solvent extraction followed by GC/MS or LC/MS analysis		-		
<b>Halogenated Solvents</b>		<u>Wastewater:</u> With reference to USEPA 8260B, Headspace, Purge-and-Trap or solvent extraction followed by GC/MS analysis <u>Sludge:</u> With reference to USEPA 5035, USEPA 50211, USEPA 8010 or solvent extraction followed by GC/MS analysis		-		
<b>Organotin Compounds</b>		<u>Wastewater:</u> With reference to ISO 17353 and derivatisation with sodium diethyl dithiocarbamate followed by GC/MS analysis <u>Sludge:</u> With reference to ISO 23161 and derivatisation with sodium diethyl dithiocarbamate followed by GC/MS analysis		-		

This document is issued by the Company under its General Conditions of Service printed overleaf or available on request and accessible at [http://www.sgs.com/terms\\_and\\_conditions.htm](http://www.sgs.com/terms_and_conditions.htm) and and Terms and Conditions for electronic documents [www.sgs.com/terms\\_e-document.htm](http://www.sgs.com/terms_e-document.htm). Attention is drawn to the limitation of liability, indemnification and jurisdiction issues defined therein. Any holder of this document is advised that information contained hereon reflects the Company's findings at the time of its intervention only and within the limits of Client's instructions, if any. The Company's sole responsibility is to its Client and this document does not exonerate parties to a transaction from exercising all their rights and obligations under the transaction documents. Any unauthorized alteration, forgery or falsification of the content or appearance of this document is unlawful and offenders may be prosecuted to the fullest extent of the law. Unless otherwise stated the results shown in this test report refer only to the sample(s) tested and such sample(s) are retained for 30 days only. This document cannot be reproduced except in full, without prior approval of the Company.

**TEST PARAMETERS**

Factory Name: Parvathi Dyeing

Factory Address: S.F.No.223, Palladam Road, Kunnankalpalayam, Veerapandi (P.O), Tirupur - 641605

ITEMS	CAS No.	METHODS	ZDHC REQUIREMENTS			Units
			Foundational Limit	Progressive Limit	Aspirational Limit	
<b>Perfluorinated and Polyfluorinated Chemicals (PFCs)</b>						
FTOHs (Non-ionic)		<u>Wastewater:</u> With reference to DIN 38407-42 or CEN/TS 15968 and derivatisation with acetic anhydride followed by GC/MS analysis <u>Sludge:</u> With reference to DIN 38407-42 and derivatisation with acetic anhydride followed by GC/MS analysis		-		
Others (Ionic)		<u>Wastewater:</u> With reference to DIN 38407-42 or CEN/TS 15968 followed by LC/MS or LC/MS(-MS) analysis <u>Sludge:</u> With reference to DIN 38407-42 followed by LC/MS or LC/MS(-MS) analysis		-		
<b>Ortho-Phthalates</b>		<u>Wastewater:</u> With reference to USEPA 8270D, ISO 18856 or solvent extraction followed by GC/MS analysis <u>Sludge:</u> With reference to USEPA 3540/3541, USEPA 3550, USEPA 3560, ISO 18856 or solvent extraction followed by GC/MS analysis		-		
<b>Polycyclic Aromatic Hydrocarbons (PAHs)</b>		<u>Wastewater:</u> With reference to USEPA 8270, DIN 38407-39 or solvent extraction followed by GC/MS analysis <u>Sludge:</u> With reference to USEPA 3540/3541, USEPA 3550, USEPA 3560, USEPA 3650, USEPA 8270 or solvent extraction followed by GC/MS analysis		-		
<b>Volatile Organic Compounds (VOCs)</b>		<u>Wastewater:</u> With reference to USEPA 8260, ISO 11423-1, Headspace, Purge-and-Trap or solvent extraction followed by GC/MS analysis <u>Sludge:</u> With reference to USEPA 5035, USEPA 5021, USEPA 8260, DIN 38407 Part 43 or solvent extraction followed by GC/MS analysis		-		

\*\*\*\*\*

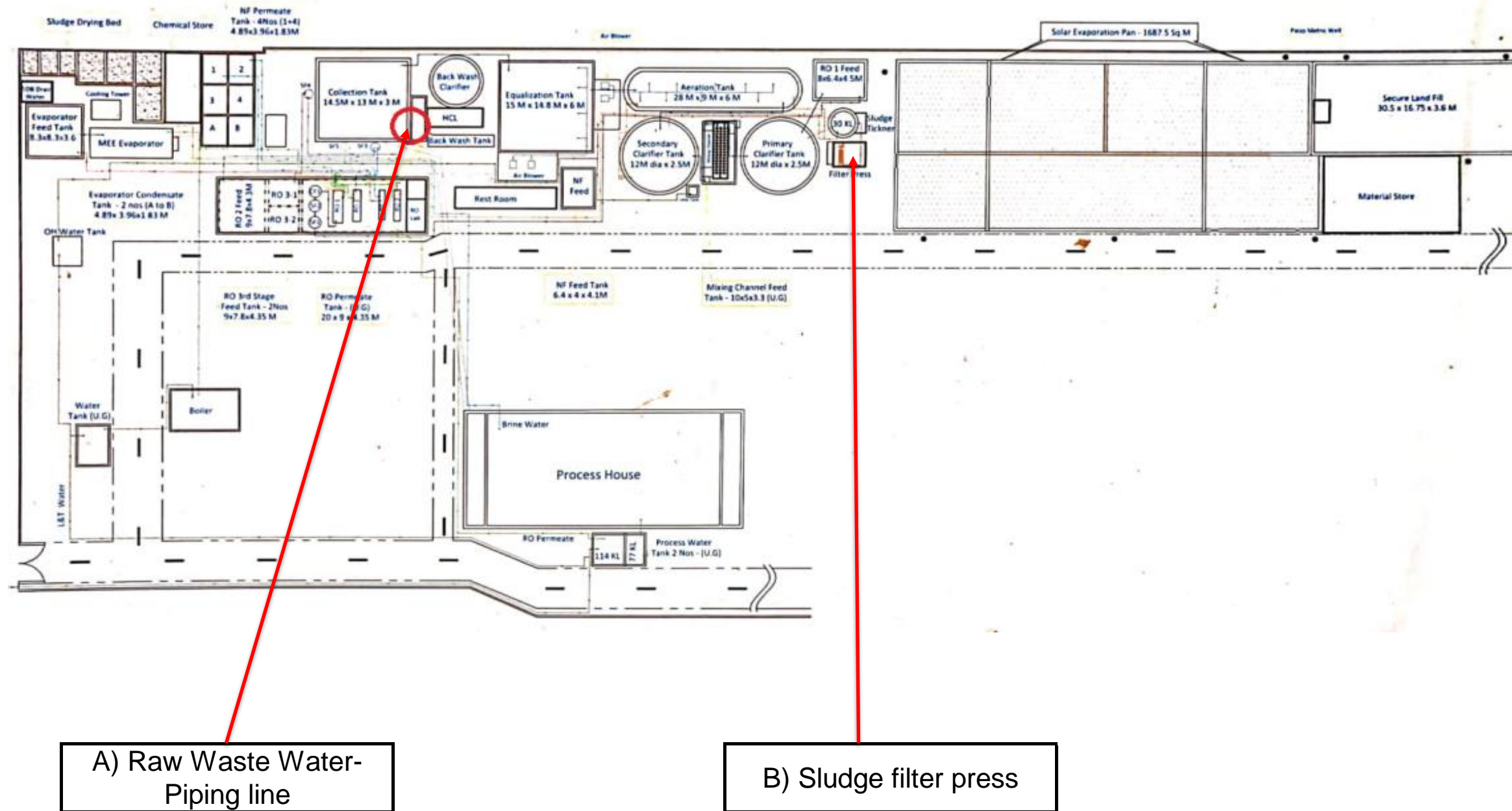
This document is issued by the Company under its General Conditions of Service printed overleaf or available on request and accessible at [http://www.sgs.com/terms\\_and\\_conditions.htm](http://www.sgs.com/terms_and_conditions.htm) and and Terms and Conditions for electronic documents [www.sgs.com/terms\\_e-document.htm](http://www.sgs.com/terms_e-document.htm). Attention is drawn to the limitation of liability, indemnification and jurisdiction issues defined therein. Any holder of this document is advised that information contained hereon reflects the Company's findings at the time of its intervention only and within the limits of Client's instructions, if any. The Company's sole responsibility is to its Client and this document does not exonerate parties to a transaction from exercising all their rights and obligations under the transaction documents. Any unauthorized alteration, forgery or falsification of the content or appearance of this document is unlawful and offenders may be prosecuted to the fullest extent of the law. Unless otherwise stated the results shown in this test report refer only to the sample(s) tested and such sample(s) are retained for 30 days only. This document cannot be reproduced except in full, without prior approval of the Company.

## PIPING PLAN

Factory Name: Parvathi Dyeing

Factory Address: S.F.No.223, Palladam Road, Kunnankalpalayam, Veerapandi (P.O), Tirupur - 641605

### ETP LAYOUT & PIPE LINE DRAWING



\*\*\*\*\*

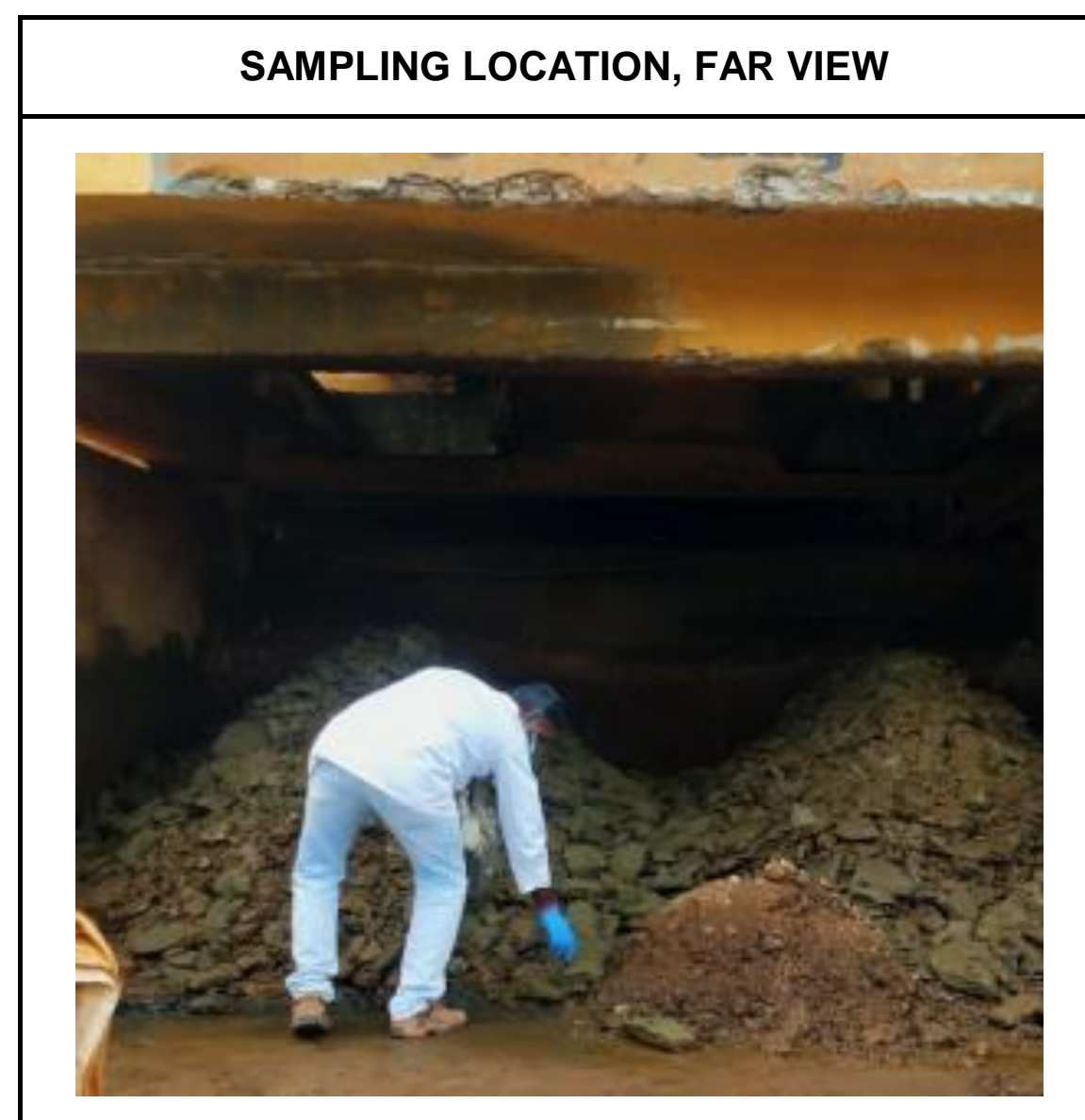
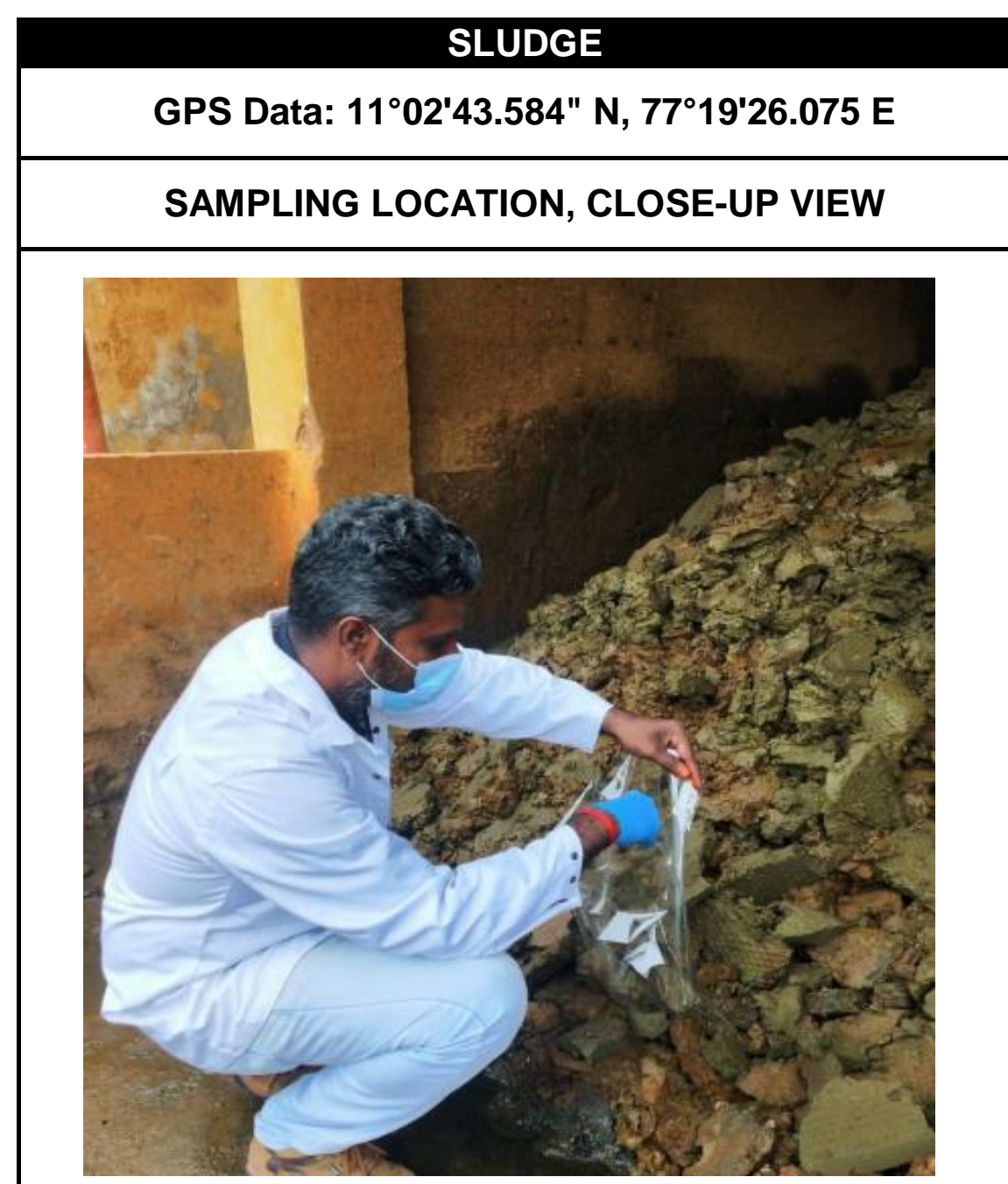
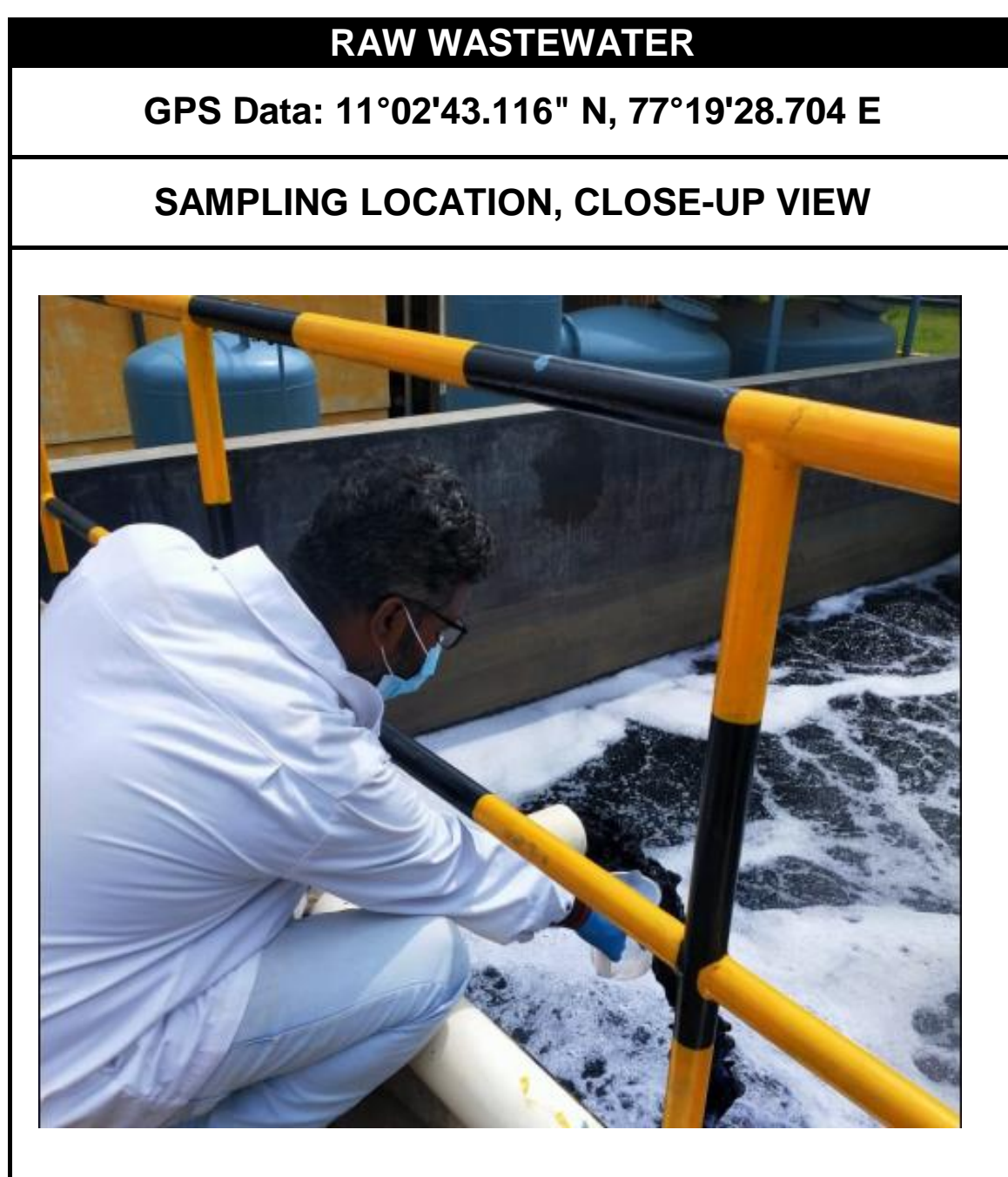
This document is issued by the Company under its General Conditions of Service printed overleaf or available on request and accessible at [http://www.sgs.com/terms\\_and\\_conditions.htm](http://www.sgs.com/terms_and_conditions.htm) and and Terms and Conditions for electronic documents [www.sgs.com/terms\\_e-document.htm](http://www.sgs.com/terms_e-document.htm). Attention is drawn to the limitation of liability, indemnification and jurisdiction issues defined therein. Any holder of this document is advised that information contained hereon reflects the Company's findings at the time of its intervention only and within the limits of Client's instructions, if any. The Company's sole responsibility is to its Client and this document does not exonerate parties to a transaction from exercising all their rights and obligations under the transaction documents. Any unauthorized alteration, forgery or falsification of the content or appearance of this document is unlawful and offenders may be prosecuted to the fullest extent of the law. Unless otherwise stated the results shown in this test report refer only to the sample(s) tested and such sample(s) are retained for 30 days only. This document cannot be reproduced except in full, without prior approval of the Company.



### SAMPLING PHOTOS

Factory Name: Parvathi Dyeing

Factory Address: S.F.No.223, Palladam Road, Kunnankalpalayam, Veerapandi (P.O), Tirupur - 641605



This document is issued by the Company under its General Conditions of Service printed overleaf or available on request and accessible at [http://www.sgs.com/terms\\_and\\_conditions.htm](http://www.sgs.com/terms_and_conditions.htm) and and Terms and Conditions for electronic documents [www.sgs.com/terms\\_e-document.htm](http://www.sgs.com/terms_e-document.htm). Attention is drawn to the limitation of liability, indemnification and jurisdiction issues defined therein. Any holder of this document is advised that information contained hereon reflects the Company's findings at the time of its intervention only and within the limits of Client's instructions, if any. The Company's sole responsibility is to its Client and this document does not exonerate parties to a transaction from exercising all their rights and obligations under the transaction documents. Any unauthorized alteration, forgery or falsification of the content or appearance of this document is unlawful and offenders may be prosecuted to the fullest extent of the law. Unless otherwise stated the results shown in this test report refer only to the sample(s) tested and such sample(s) are retained for 30 days only. This document cannot be reproduced except in full, without prior approval of the Company.