

AB-0690-T
TR2207791
10-22

## TEST REPORT

### CLIENT DETAILS

**Client Name:** Sanko Tekstil San. ve Tic. A.S.  
**Client Contact:** Cihangir Ağzıkara  
**Telephone:** +90 2242807824  
**Email:** [cevregorevlisi@isko.com.tr](mailto:cevregorevlisi@isko.com.tr)  
**Address:** OSB 3.Cad No:19-A İnegöl/ Bursa/ Turkey

### LABORATORY DETAILS

**SGS Affiliate:** SGS Turkey CRS  
**SGS Contact:** Juliyet Bekar  
**Telephone:** +90 2123684000  
**Email:** [juliyet.bekar@sgs.com](mailto:juliyet.bekar@sgs.com)  
**Address:** Osmanpasa Mah. Is Istanbul Plaza No.95 E Girişi Gunesli, Istanbul-Turkey

### FACTORY DETAILS

**Factory Name:** Sanko Tekstil San. ve Tic. A.S. MARTELLİ Şubesi  
**Factory Contact:** Cihangir Ağzıkara  
**Telephone:** +90 2242807824  
**Email:** [cevregorevlisi@isko.com.tr](mailto:cevregorevlisi@isko.com.tr)  
**Address:** Süleymaniye OSB Mahallesi 3.Cadde No:13 İnegöl/Bursa-Turkey  
**Types of Mills:** (2) Yarn Dyeing, Bleaching (3) Fabric Dyeing, Finishing, Washing  
(4) Fabric Dyeing, Finishing, Printing  
**On-Site ETP:** No  
**Discharge Destination:** To Centralized Waste Water Treatment Plant  
**Name of Municipal/Centralized ETP:** İnegöl Organize Sanayi Bölgesi Atıksu Arıtma Tesisi  
**Address of Municipal/Centralized ETP:** Organize Sanayi Bölgesi Tayyre Meydanı Caddesi No:22/1 İnegöl / Bursa- Turkey

### SAMPLE AND TESTING DETAILS



**Sampling Country:** SGS Turkey  
**Sampling Engineer / ZDHC Sampler's Certification No.:** Onur Kulaç / 8F146507626  
**Sampling Date:** 13-10-2022  
**Sample Received Date:** 14-10-2022  
**Test Performing Period:** 14-10-2022 - 27-10-2022  
**No. of Samples:** Water (1)  
**Sample Descriptions:** 1) Discharged Wastewater (6-hour Composite)  
**Sample Volume:** 12L water sample in total  
**Testing Institute:** SGS Turkey  
**Discharge Method:** Indirect Discharge

### OVERALL RESULTS

	Raw Wastewater	Discharged Wastewater	Sludge
<b>Conventional Parameters / Anions / Metals:</b>	Not Tested	Please refer to the information in TEST RESULTS	Not Tested
<b>MRSLS Parameters:</b>	Not Tested	Detected	Not Tested

### REMARKS

- This test document cannot be reproduced in any way, except in full content, without prior approval in writing by the laboratory.
- The results shown in this test report refer only to the sampling and the sample(s) tested unless otherwise stated.
- For indirect discharge, factory performance against ZDHC requirements for conventional parameters, anions and metals for Discharged Waste Water are for reference only. Actual factory performance on Discharged Waste Water should be compared with the discharged license of the factory.
- Test Results: Please refer to the next page(s).
- Performed Test Summary: Selected test(s) as requested by client against Client's performance standard.
- Order no / Sample ID: Please refer to Test Results pages.

The test results relate to the tested items only. Test reports without SGS seal and authorised signatures are invalid. Issued in Istanbul Signed for and on behalf of SGS Supervise Gözetme Etüd Kontrol Servisleri A.Ş.	
<b>Chemical Laboratory - Waste Water Team Leader</b>	<b>Support Manager</b>
	

**NOTES:**

This document is issued by the Company subject to its General Conditions of Service printed overleaf, available on request or accessible at [www.sgs.com/terms\\_and\\_conditions](http://www.sgs.com/terms_and_conditions) and, for electronic format documents, subject to Terms and Conditions for Electronic Documents at [www.sgs.com/terms-and-conditions/terms-e-document](http://www.sgs.com/terms-and-conditions/terms-e-document).

Attention is drawn to the limitation of liability, indemnification and jurisdiction issues defined therein. Any holder of this document is advised that information contained hereon reflects the Company's findings at the time of its intervention only and within the limits of Client's instructions, if any. The Company's sole responsibility is to its Client and this document does not exonerate parties to a transaction from exercising all their rights and obligations under the transaction documents. Unsigned test reports are considered invalid. This document cannot be reproduced except in full, without prior written approval of the Company. Any unauthorized alteration, forgery or falsification of the content or appearance of this document is unlawful and offenders may be prosecuted to the fullest extent of the law. If it is important for the test result, the environmental conditions are specified in the test result table.

SGS applied shared risk decision rule.

SGS does not verify authenticity of any Brand/Trademark of products. Buyers must check if the product is genuine with the Brand/Trademark owner directly.

Turkish Accreditation Agency (TURKAK) is a signatory to the European co-operation for Accreditation (EA) Multilateral Agreement (MLA) and to the International Laboratory Accreditation Cooperation (ILAC) Mutual Recognition Arrangement (MRA) for the recognition of test reports.

Unless otherwise stated the results shown in this test report refer only to the sample(s) tested. Unless further specified in an individual contract the sample(s) retention time is 30 days.

In this Test Report tests marked (1) are included in the TURKAK Accreditation Scope of this Laboratory.

**RESULT SUMMARY**

Factory Name: Sanko Tekstil San. ve Tic. A.S. MARTELLİ Şubesi  
 Factory Address: Süleymaniye OSB Mahallesi 3.Cadde No:13 İnegöl/Bursa-Turkey

TEST ITEMS	Discharged Wastewater
Conventional Parameters	Please refer to the information in TEST RESULTS
Anions	X
Metals	O
Alkylphenol (AP) & Alkylphenol Ethoxylates (APEOs)	O
Chlorobenzenes and Chlorotoluenes	O
Chlorophenols	O
Dyes - Azo (Forming Restricted Amines)	X
Dyes - Carcinogenic or Equivalent Concern	O
Dyes - Disperse (Sensitising)	O
Flame Retardants	O
Glycols	O
Halogenated Solvents	O
Organotin Compounds	O
Perfluorinated and Polyfluorinated Chemicals (PFCs)	O
Ortho-Phthalates	O
Polycyclic Aromatic Hydrocarbons (PAHs)	O
Volatile Organic Compounds (VOCs)	O

Note:

X - Detected

O - Not Detected

N/A - Not Tested

## TEST RESULTS

Factory Name: Sanko Tekstil San. ve Tic. A.S. MARTELLİ Şubesi  
 Factory Address: Süleymaniye OSB Mahallesi 3.Cadde No:13 İnegöl/Bursa-Turkey

Items	CAS No.	Reporting Limit	Units	Discharged Wastewater	Discharged Wastewater	Discharged Wastewater
Sample ID	TR2200994					Local Wastewater Discharge Requirement*
Date of Sampling	13-10-2022					
Sampling Location	Discharged Point					
Sampling Start Time	09:00					
Sampling End Time	15:00					
Date of Sample Received	14-10-2022					
Sample Colour Description	-	-	-	Dark blue	-	-
Average Wastewater Flow***	-	-	L/hr	14000	-	-
<b>Conventional Parameters</b>						
Temp-Difference	-	-	°C	12,1		N/A
Temp-Discharge Pipe	-	-	°C	34,8	N/A	50
Temp-Receiving Water	-	-	°C	22,7		N/A
Total Suspended Solids (TSS)	-	5	mg/L	37	N/A	500
Chemical Oxygen Demand (COD)	-	10	mg/L	244	N/A	5000
Total Nitrogen	-	5	mg/L	6	N/A	N/A
pH Value	-	-	-	8,1	N/A	6-9,5
Colour (436nm)	-	0,1	m <sup>-1</sup>	1,5		N/A
Colour (525nm)	-	0,1	m <sup>-1</sup>	1,2	N/A	N/A
Colour (620nm)	-	0,1	m <sup>-1</sup>	1,9		N/A
5-Days Biochemical Oxygen Demand (BOD <sub>5</sub> )	-	5	mg/L	66	N/A	N/A
Ammonium-N	-	0.5	mg/L	3,7	N/A	5
Total Phosphorus	-	0.1	mg/L	0,3	N/A	10
AOX	-	0.1	mg/L	n.d.	N/A	N/A
Oil and Grease	-	0.5	mg/L	n.d.	N/A	200
Phenol	-	0.001	mg/L	n.d.	N/A	N/A
Coliform	-	25	Bacteria/100mL	28	N/A	N/A
Persistent Foam	-	Not Visible	-	Not Visible	N/A	N/A

## TEST RESULTS

Factory Name: Sanko Tekstil San. ve Tic. A.S. MARTELLİ Şubesi  
Factory Address: Süleymaniye OSB Mahallesi 3.Cadde No:13 İnegöl/Bursa-Turkey

Items	CAS No.	Reporting Limit	Units	Discharged Wastewater	Discharged Wastewater	Discharged Wastewater
<b>Anions</b>						
Cyanide	-	0.05	mg/L	n.d.	N/A	1
Sulfide	-	0.01	mg/L	n.d.	N/A	N/A
Sulfite	-	0.2	mg/L	0,6	N/A	N/A
<b>Metals</b>						
Total Antimony (Sb)*	7440-36-0	0,01	mg/L	n.d.	Fulfill Aspirational Limit	N/A
Total Chromium (Cr)	7440-47-3	0,05	mg/L	n.d.	Fulfill Aspirational Limit	4
Total Cobalt (Co)	7440-48-4	0,01	mg/L	n.d.	Fulfill Aspirational Limit	N/A
Total Copper (Cu)	7440-50-8	0,25	mg/L	n.d.	Fulfill Aspirational Limit	6
Total Nickel (Ni)	7440-02-0	0,05	mg/L	n.d.	Fulfill Aspirational Limit	N/A
Total Silver (Ag)	7440-22-4	0,005	mg/L	n.d.	Fulfill Aspirational Limit	N/A
Total Zinc (Zn)	7440-66-6	0,5	mg/L	n.d.	Fulfill Aspirational Limit	10
Total Arsenic (As)	7440-38-2	0,005	mg/L	n.d.	Fulfill Aspirational Limit	N/A
Total Cadmium (Cd)	7440-43-9	0,01	mg/L	n.d.	Fulfill Aspirational Limit	1
Chromium-Hexavalent (Cr-VI)	7440-47-3, 18540-29-9	0,001	mg/L	n.d.	Fulfill Aspirational Limit	1
Total Lead (Pb)	7439-92-1	0,01	mg/L	n.d.	Fulfill Aspirational Limit	4
Total Mercury (Hg)	7439-97-6	0,001	mg/L	n.d.	Fulfill Aspirational Limit	0,2
<b>Alkylphenol (AP) &amp; Alkylphenol Ethoxylates (APEOs)</b>						
Nonylphenol (NP), mixed isomers	Multiple, including 104-40-5, 11066-49-2, 25154-52-3, 84852-15-3, 90481-04-2, 1173019-62-9	5	µg/L	n.d.	Not Detected	-
Octylphenol (OP), mixed isomers	Multiple, including 140-66-9, 1806-26-4, 27193-28-8	5	µg/L	n.d.	Not Detected	-
Octylphenol ethoxylates (OPEO)	Multiple, including 9002-93-1, 9036-19-3, 68987-90-6	5	µg/L	n.d.	Not Detected	-
Nonylphenol ethoxylates (NPEO)	Multiple, including 9016-45-9, 26027-38-3, 37205-87-1, 68412-54-4, 127087-87-0	5	µg/L	n.d.	Not Detected	-

## TEST RESULTS

Factory Name: Sanko Tekstil San. ve Tic. A.S. MARTELLİ Şubesi  
 Factory Address: Süleymaniye OSB Mahallesi 3.Cadde No:13 İnegöl/Bursa-Turkey

		Sample ID	TR2200994			Local Wastewater Discharge Requirement*
		Date of Sampling	13-10-2022			
		Sampling Location	Discharged Point			
		Sampling Start Time	09:00			
		Sampling End Time	15:00			
		Date of Sample Received	14-10-2022			
Items	CAS No.	Reporting Limit	Units	Discharged Wastewater	Discharged Wastewater	
<b>Chlorobenzenes &amp; Chlorotoluenes</b>						
Monochlorobenzenes	108-90-7	0,2	µg/L	n.d.	Not Detected	-
1,2-Dichlorobenzene	95-50-1	0,2	µg/L	n.d.	Not Detected	-
1,3-Dichlorobenzene	541-73-1	0,2	µg/L	n.d.	Not Detected	-
1,4-Dichlorobenzene	106-46-7	0,2	µg/L	n.d.	Not Detected	-
1,2,3-Trichlorobenzene	87-61-6	0,2	µg/L	n.d.	Not Detected	-
1,2,4-Trichlorobenzene	120-82-1	0,2	µg/L	n.d.	Not Detected	-
1,3,5-Trichlorobenzene	108-70-3	0,2	µg/L	n.d.	Not Detected	-
1,2,3,4-Tetrachlorobenzene	634-66-2	0,2	µg/L	n.d.	Not Detected	-
1,2,3,5-Tetrachlorobenzene	634-90-2	0,2	µg/L	n.d.	Not Detected	-
1,2,4,5-Tetrachlorobenzene	95-94-3	0,2	µg/L	n.d.	Not Detected	-
Pentachlorobenzene	608-93-5	0,2	µg/L	n.d.	Not Detected	-
Hexachlorobenzene	118-74-1	0,2	µg/L	n.d.	Not Detected	-
2-Chlorotoluene	95-49-8	0,2	µg/L	n.d.	Not Detected	-
3-Chlorotoluene	108-41-8	0,2	µg/L	n.d.	Not Detected	-
4-Chlorotoluene	106-43-4	0,2	µg/L	n.d.	Not Detected	-
2,3-Dichlorotoluene	32768-54-0	0,2	µg/L	n.d.	Not Detected	-
2,4-Dichlorotoluene	95-73-8	0,2	µg/L	n.d.	Not Detected	-
2,5-Dichlorotoluene	19398-61-9	0,2	µg/L	n.d.	Not Detected	-
2,6-Dichlorotoluene	118-69-4	0,2	µg/L	n.d.	Not Detected	-
3,4-Dichlorotoluene	95-75-0	0,2	µg/L	n.d.	Not Detected	-
3,5-Dichlorotoluene	25186-47-4	0,2	µg/L	n.d.	Not Detected	-
2,3,4-Trichlorotoluene	7359-72-0	0,2	µg/L	n.d.	Not Detected	-

## TEST RESULTS

Factory Name: Sanko Tekstil San. ve Tic. A.S. MARTELLİ Şubesi  
 Factory Address: Süleymaniye OSB Mahallesi 3.Cadde No:13 İnegöl/Bursa-Turkey

		Sample ID	TR2200994			Local Wastewater Discharge Requirement*
		Date of Sampling	13-10-2022			
		Sampling Location	Discharged Point			
		Sampling Start Time	09:00			
		Sampling End Time	15:00			
		Date of Sample Received	14-10-2022			
Items	CAS No.	Reporting Limit	Units	Discharged Wastewater	Discharged Wastewater	
2,3,6-Trichlorotoluene	2077-46-5	0.2	µg/L	n.d.	Not Detected	-
2,4,5-Trichlorotoluene	6639-30-1	0.2	µg/L	n.d.	Not Detected	-
2,4,6-Trichlorotoluene	23749-65-7	0.2	µg/L	n.d.	Not Detected	-
3,4,5-Trichlorotoluene	21472-86-6	0.2	µg/L	n.d.	Not Detected	-
2,3,4,5-Tetrachlorotoluene	76057-12-0	0.2	µg/L	n.d.	Not Detected	-
2,3,5,6-Tetrachlorotoluene	29733-70-8	0.2	µg/L	n.d.	Not Detected	-
2,3,4,6-Tetrachlorotoluene	875-40-1	0.2	µg/L	n.d.	Not Detected	-
Pentachlorotoluene	877-11-2	0.2	µg/L	n.d.	Not Detected	-
<b>Chlorophenols</b>						
2-Chlorophenol	95-57-8	0.5	µg/L	n.d.	Not Detected	-
3-Chlorophenol	108-43-0	0.5	µg/L	n.d.	Not Detected	-
4-Chlorophenol	106-48-9	0.5	µg/L	n.d.	Not Detected	-
2,3-Dichlorophenol	576-24-9	0.5	µg/L	n.d.	Not Detected	-
2,4-Dichlorophenol	120-83-2	0.5	µg/L	n.d.	Not Detected	-
2,5-Dichlorophenol	583-78-8	0.5	µg/L	n.d.	Not Detected	-
2,6-Dichlorophenol	87-65-0	0.5	µg/L	n.d.	Not Detected	-
3,4-Dichlorophenol	95-77-2	0.5	µg/L	n.d.	Not Detected	-
3,5-Dichlorophenol	591-35-5	0.5	µg/L	n.d.	Not Detected	-
2,3,4-Trichlorophenol	15950-66-0	0.5	µg/L	n.d.	Not Detected	-
2,3,5-Trichlorophenol	933-78-8	0.5	µg/L	n.d.	Not Detected	-
2,3,6-Trichlorophenol	933-75-5	0.5	µg/L	n.d.	Not Detected	-
2,4,5-Trichlorophenol	95-95-4	0.5	µg/L	n.d.	Not Detected	-
2,4,6-Trichlorophenol	88-06-2	0.5	µg/L	n.d.	Not Detected	-
3,4,5-Trichlorophenol	609-19-8	0.5	µg/L	n.d.	Not Detected	-
2,3,4,5-Tetrachlorophenol	4901-51-3	0.5	µg/L	n.d.	Not Detected	-

## TEST RESULTS

Factory Name: Sanko Tekstil San. ve Tic. A.S. MARTELLİ Şubesi  
Factory Address: Süleymaniye OSB Mahallesi 3.Cadde No:13 İnegöl/Bursa-Turkey

		Sample ID	TR2200994			
		Date of Sampling	13-10-2022			
		Sampling Location	Discharged Point			
		Sampling Start Time	09:00			
		Sampling End Time	15:00			
		Date of Sample Received	14-10-2022		Local Wastewater Discharge Requirement*	
Items	CAS No.	Reporting Limit	Units	Discharged Wastewater	Discharged Wastewater	Discharged Wastewater
2,3,4,6-Tetrachlorophenol	58-90-2	0.5	µg/L	n.d.	Not Detected	-
2,3,5,6-Tetrachlorophenol	935-95-5	0.5	µg/L	n.d.	Not Detected	-
Pentachlorophenol	87-86-5	0.5	µg/L	n.d.	Not Detected	-
<b>Dyes - Azo (Forming Restricted Amines)</b>						
4,4'-Methylene-Bis(2-Chloroaniline)	101-14-4	0,1	µg/L	n.d.	Not Detected	-
4,4'-Diaminodiphenylmethane	101-77-9	0,1	µg/L	0,8 @	Detected	-
4,4'-Oxydianiline	101-80-4	0,1	µg/L	n.d.	Not Detected	-
p-Chloroaniline	106-47-8	0,1	µg/L	n.d.	Not Detected	-
3,3'-Dimethoxybenzidine	119-90-4	0,1	µg/L	n.d.	Not Detected	-
3,3'-Dimethylbenzidine	119-93-7	0,1	µg/L	n.d.	Not Detected	-
p-Cresidine	120-71-8	0,1	µg/L	n.d.	Not Detected	-
2,4,5-Trimethylaniline	137-17-7	0,1	µg/L	n.d.	Not Detected	-
4,4'-Thiodianiline	139-65-1	0,1	µg/L	n.d.	Not Detected	-
p-Aminoazobenzene	60-09-3	0,1	µg/L	n.d.	Not Detected	-
2,4-Diaminoanisole	615-05-4	0,1	µg/L	n.d.	Not Detected	-
3,3'-Dimethyl-4,4'diaminodiphenylmethane	838-88-0	0,1	µg/L	n.d.	Not Detected	-
2,6-Xylidine	87-62-7	0,1	µg/L	n.d.	Not Detected	-
o-Anisidine	90-04-0	0,1	µg/L	n.d.	Not Detected	-
2-Naphthylamine	91-59-8	0,1	µg/L	n.d.	Not Detected	-
3,3'-Dichlorobenzidine	91-94-1	0,1	µg/L	n.d.	Not Detected	-
4-Aminodiphenyl	92-67-1	0,1	µg/L	n.d.	Not Detected	-
Benzidine	92-87-5	0,1	µg/L	n.d.	Not Detected	-
o-Toluidine	95-53-4	0,1	µg/L	n.d.	Not Detected	-
2,4-Xylidine	95-68-1	0,1	µg/L	n.d.	Not Detected	-
4-Chloro-o-Toluidine	95-69-2	0,1	µg/L	n.d.	Not Detected	-



## TEST RESULTS

Factory Name: Sanko Tekstil San. ve Tic. A.S. MARTELLİ Şubesi  
Factory Address: Süleymaniye OSB Mahallesi 3.Cadde No:13 İnegöl/Bursa-Turkey

		Sample ID	TR2200994			
		Date of Sampling	13-10-2022			
		Sampling Location	Discharged Point			
		Sampling Start Time	09:00			
		Sampling End Time	15:00			
		Date of Sample Received	14-10-2022			
Items	CAS No.	Reporting Limit	Units	Discharged Wastewater	Discharged Wastewater	Discharged Wastewater
2,4-Toluylenediamine	95-80-7	0,1	µg/L	n.d.	Not Detected	-
o-Aminoazotoluene	97-56-3	0,1	µg/L	n.d.	Not Detected	-
2-Amino-4-Nitrotoluene	99-55-8	0,1	µg/L	n.d.	Not Detected	-
<b>Dyes - Carcinogenic or Equivalent Concern</b>						
Direct Black 38	1937-37-7	500	µg/L	n.d.	Not Detected	-
Direct Blue 6	2602-46-2	500	µg/L	n.d.	Not Detected	-
Acid Red 26	3761-53-3	500	µg/L	n.d.	Not Detected	-
Basic Red 9	569-61-9	500	µg/L	n.d.	Not Detected	-
Direct Red 28	573-58-0	500	µg/L	n.d.	Not Detected	-
Basic Violet 14	632-99-5	500	µg/L	n.d.	Not Detected	-
Disperse Blue 1	2475-45-8	500	µg/L	n.d.	Not Detected	-
Disperse Blue 3	2475-46-9	500	µg/L	n.d.	Not Detected	-
Basic Blue 26	2580-56-5	500	µg/L	n.d.	Not Detected	-
Basic Green 4 (malachite green chloride)^	569-64-2	500	µg/L	n.d.	Not Detected	-
Basic Green 4 (malachite green oxalate)^	2437-29-8	500	µg/L	n.d.	Not Detected	-
Basic Green 4 (malachite green)	10309-95-2	500	µg/L	n.d.	Not Detected	-
Disperse Orange 11	82-28-0	500	µg/L	n.d.	Not Detected	-
<b>Dyes - Disperse (Sensitising)</b>						
Disperse Yellow 1	119-15-3	50	µg/L	n.d.	Not Detected	-
Disperse Blue 102	12222-97-8	50	µg/L	n.d.	Not Detected	-
Disperse Blue 106	12223-01-7	50	µg/L	n.d.	Not Detected	-
Disperse Yellow 39	12236-29-2	50	µg/L	n.d.	Not Detected	-
Disperse Orange 37/59/76	13301-61-6	50	µg/L	n.d.	Not Detected	-
Disperse Brown 1	23355-64-8	50	µg/L	n.d.	Not Detected	-
Disperse Orange 1	2581-69-3	50	µg/L	n.d.	Not Detected	-
Disperse Yellow 3	2832-40-8	50	µg/L	n.d.	Not Detected	-

**TEST RESULTS**

Factory Name: Sanko Tekstil San. ve Tic. A.S. MARTELLİ Şubesi  
 Factory Address: Süleymaniye OSB Mahallesi 3.Cadde No:13 İnegöl/Bursa-Turkey

		Sample ID	TR2200994			Local Wastewater Discharge Requirement*
		Date of Sampling	13-10-2022			
		Sampling Location	Discharged Point			
		Sampling Start Time	09:00			
		Sampling End Time	15:00			
		Date of Sample Received	14-10-2022			
Items	CAS No.	Reporting Limit	Units	Discharged Wastewater	Discharged Wastewater	
Disperse Red 11	2872-48-2	50	µg/L	n.d.	Not Detected	-
Disperse Red 1	2872-52-8	50	µg/L	n.d.	Not Detected	-
Disperse Red 17	3179-89-3	50	µg/L	n.d.	Not Detected	-
Disperse Blue 7	3179-90-6	50	µg/L	n.d.	Not Detected	-
Disperse Blue 26	3860-63-7	50	µg/L	n.d.	Not Detected	-
Disperse Yellow 49	54824-37-2	50	µg/L	n.d.	Not Detected	-
Disperse Blue 35	12222-75-2, 56524-77-7	50	µg/L	n.d.	Not Detected	-
Disperse Blue 124	61951-51-7	50	µg/L	n.d.	Not Detected	-
Disperse Yellow 9	6373-73-5	50	µg/L	n.d.	Not Detected	-
Disperse Orange 3	730-40-5	50	µg/L	n.d.	Not Detected	-
<b>Flame Retardants</b>						
Tris(2-chloroethyl) phosphate (TCEP)	115-96-8	5	µg/L	n.d.	Not Detected	-
Decabromodiphenyl ethers (DecaBDE)	1163-19-5	5	µg/L	n.d.	Not Detected	-
Tris(2,3-dibromopropyl) phosphate (TRIS)	126-72-7	5	µg/L	n.d.	Not Detected	-
Pentabromodiphenyl ethers (PentaBDE)	32534-81-9	5	µg/L	n.d.	Not Detected	-
Octabromodiphenyl ethers (OctaBDE)	32536-52-0	5	µg/L	n.d.	Not Detected	-
Bis(2,3-dibromopropyl)phosphate (BIS)	5412-25-9	5	µg/L	n.d.	Not Detected	-
Tris(1-aziridinyl)phosphine oxide (TEPA)	545-55-1	5	µg/L	n.d.	Not Detected	-
Polybrominated biphenyls (PBBs)	59536-65-1	5	µg/L	n.d.	Not Detected	-
Tetrabromobisphenol A (TBBPA)	79-94-7	5	µg/L	n.d.	Not Detected	-
Hexabromocyclododecane (HBCDD)	134237-50-6, 134237-51-7, 134237-52-8, 29637-99-4, 3194-55-6	5	µg/L	n.d.	Not Detected	-
2,2-Bis(bromomethyl)-1,3-propanediol (BBMP)	3296-90-0	5	µg/L	n.d.	Not Detected	-
Tris(1,3-dichloro-2-propyl) phosphate (TDCPP)	13674-87-8	5	µg/L	n.d.	Not Detected	-
Short Chain Chlorinated Paraffins (SCCP), C <sub>10</sub> -C <sub>13</sub>	85535-84-8	5	µg/L	n.d.	Not Detected	-
<b>Glycols</b>						
Bis(2-methoxyethyl)-ether	111-96-6	50	µg/L	n.d.	Not Detected	-

## TEST RESULTS

Factory Name: Sanko Tekstil San. ve Tic. A.S. MARTELLİ Şubesi  
 Factory Address: Süleymaniye OSB Mahallesi 3.Cadde No:13 İnegöl/Bursa-Turkey

		Sample ID	TR2200994			Local Wastewater Discharge Requirement*
		Date of Sampling	13-10-2022			
		Sampling Location	Discharged Point			
		Sampling Start Time	09:00			
		Sampling End Time	15:00			
		Date of Sample Received	14-10-2022			
Items	CAS No.	Reporting Limit	Units	Discharged Wastewater	Discharged Wastewater	
2-Ethoxyethanol	110-80-5	50	µg/L	n.d.	Not Detected	-
2-Ethoxyethyl acetate	111-15-9	50	µg/L	n.d.	Not Detected	-
Ethylene glycol dimethyl ether	110-71-4	50	µg/L	n.d.	Not Detected	-
2-Methoxyethanol	109-86-4	50	µg/L	n.d.	Not Detected	-
2-Methoxyethylacetate	110-49-6	50	µg/L	n.d.	Not Detected	-
2-Methoxypropylacetate	70657-70-4	50	µg/L	n.d.	Not Detected	-
Triethylene glycol dimethyl ether	112-49-2	50	µg/L	n.d.	Not Detected	-
<b>Halogenated Solvents</b>						
1,2-Dichloroethane	107-06-2	1	µg/L	n.d.	Not Detected	-
Methylene chloride	75-09-2	1	µg/L	n.d.	Not Detected	-
Trichloroethene	79-01-6	1	µg/L	n.d.	Not Detected	-
Tetrachloroethene	127-18-4	1	µg/L	n.d.	Not Detected	-
<b>Organotin Compounds</b>						
Mono-, di- and tri-methyltin derivatives	Multiple	0,01	µg/L	n.d.	Not Detected	-
Monomethyltin (MMT)	Multiple	0,01	µg/L	n.d.	Not Detected	-
Dimethyltin (DMT)	Multiple	0,01	µg/L	n.d.	Not Detected	-
Trimethyltin (TMT)	Multiple	0,01	µg/L	n.d.	Not Detected	-
Mono-, di- and tri-butyltin derivatives	Multiple	0,01	µg/L	n.d.	Not Detected	-
Monobutyltin (MBT)	1118-46-3, 78763-54-9	0,01	µg/L	n.d.	Not Detected	-
Dibutyltin (DBT)	1002-53-5	0,01	µg/L	n.d.	Not Detected	-
Tributyltin (TBT)	56573-85-4	0,01	µg/L	n.d.	Not Detected	-
Mono-, di- and tri-phenyltin derivatives	Multiple	0,01	µg/L	n.d.	Not Detected	-
Monophenyltin (MPhT)	Multiple	0,01	µg/L	n.d.	Not Detected	-
Diphenyltin (DPhT)	Multiple	0,01	µg/L	n.d.	Not Detected	-

**TEST RESULTS**

Factory Name: Sanko Tekstil San. ve Tic. A.S. MARTELLİ Şubesi  
 Factory Address: Süleymaniye OSB Mahallesi 3.Cadde No:13 İnegöl/Bursa-Turkey

		Sample ID	TR2200994			Local Wastewater Discharge Requirement*
		Date of Sampling	13-10-2022			
		Sampling Location	Discharged Point			
		Sampling Start Time	09:00			
		Sampling End Time	15:00			
		Date of Sample Received	14-10-2022			
Items	CAS No.	Reporting Limit	Units	Discharged Wastewater	Discharged Wastewater	
Triphenyltin (TPHT)	892-20-6, 668-34-8	0,01	µg/L	n.d.	Not Detected	-
Mono-, di- and tri-octyltin derivatives	Multiple	0,01	µg/L	n.d.	Not Detected	-
Monooctyltin (MOT)	15231-57-9	0,01	µg/L	n.d.	Not Detected	-
Diocetyltn (DOT)	94410-05-6, 12531-44-4	0,01	µg/L	n.d.	Not Detected	-
Triocetyltn (TOT)	Multiple	0,01	µg/L	n.d.	Not Detected	-
<b>Perfluorinated and Polyfluorinated Chemicals (PFCs)</b>						
PFOS	1763-23-1	0,01	µg/L	n.d.	Not Detected	-
PFOA	335-67-1	0,01	µg/L	n.d.	Not Detected	-
PFBS	375-73-5, 59933-66-3, 29420-49-3, 29420-43-3	0,01	µg/L	n.d.	Not Detected	-
PFHxA	307-24-4	0,01	µg/L	n.d.	Not Detected	-
8:2 FTOH	678-39-7	1	µg/L	n.d.	Not Detected	-
6:2 FTOH	647-42-7	1	µg/L	n.d.	Not Detected	-
<b>Ortho-Phthalates</b>						
Di(2-Ethyl Hexyl) Phthalate (DEHP)	117-81-7	10	µg/L	n.d.	Not Detected	-
Bis(2-methoxyethyl)phthalate (DMEP)	117-82-8	10	µg/L	n.d.	Not Detected	-
Di-N-Octyl Phthalate (DNOP)	117-84-0	10	µg/L	n.d.	Not Detected	-
Di-Iso-Decyl Phthalate (DIDP)	26761-40-0, 68515-49-1	10	µg/L	n.d.	Not Detected	-
Di-Iso-Nonyl Phthalate (DINP)	28553-12-0, 68515-48-0	10	µg/L	n.d.	Not Detected	-
Di-N-Hexyl Phthalate (DNHP)	84-75-3	10	µg/L	n.d.	Not Detected	-
Dibutyl Phthalate (DBP)	84-74-2	10	µg/L	n.d.	Not Detected	-
Benzyl Butyl Phthalate (BBP)	85-68-7	10	µg/L	n.d.	Not Detected	-
Dinonyl phthalate (DNP)	84-76-4	10	µg/L	n.d.	Not Detected	-
Diethyl Phthalate (DEP)	84-66-2	10	µg/L	n.d.	Not Detected	-
Di-N-Propyl Phthalate (DPRP)	131-16-8	10	µg/L	n.d.	Not Detected	-
Di-Iso-Butyl Phthalate (DIBP)	84-69-5	10	µg/L	n.d.	Not Detected	-

**TEST RESULTS**

Factory Name: Sanko Tekstil San. ve Tic. A.S. MARTELLİ Şubesi  
 Factory Address: Süleymaniye OSB Mahallesi 3.Cadde No:13 İnegöl/Bursa-Turkey

		Sample ID	TR2200994			Local Wastewater Discharge Requirement*
		Date of Sampling	13-10-2022			
		Sampling Location	Discharged Point			
		Sampling Start Time	09:00			
		Sampling End Time	15:00			
		Date of Sample Received	14-10-2022			
Items	CAS No.	Reporting Limit	Units	Discharged Wastewater	Discharged Wastewater	Discharged Wastewater
Dicyclohexyl Phthalate (DCHP)	84-61-7	10	µg/L	n.d.	Not Detected	-
Di-Iso-Octyl Phthalate (DIOP)	27554-26-3	10	µg/L	n.d.	Not Detected	-
1,2-Benzenedicarboxylic acid, Di-C7-11 Branched and Linear Alkyl Esters (DHNUP)	68515-42-4	10	µg/L	n.d.	Not Detected	-
1,2-Benzenedicarboxylic acid, Di-C6-8 Branched Alkyl Esters, C7 rich (DIHP)	71888-89-6	10	µg/L	n.d.	Not Detected	-
<b>Polycyclic Aromatic Hydrocarbons (PAHs)</b>						
Bezo[a]pyrene	50-32-8	1	µg/L	n.d.	Not Detected	-
Anthracene	120-12-7	1	µg/L	n.d.	Not Detected	-
Pyrene	129-00-0	1	µg/L	n.d.	Not Detected	-
Benzo[ghi]perylene	191-24-2	1	µg/L	n.d.	Not Detected	-
Benzo[e]pyrene	192-97-2	1	µg/L	n.d.	Not Detected	-
Indeno[1,2,3-cd]pyrene	193-39-5	1	µg/L	n.d.	Not Detected	-
Benzo[j]fluoranthene	205-82-3	1	µg/L	n.d.	Not Detected	-
Benzo[b]fluoranthene	205-99-2	1	µg/L	n.d.	Not Detected	-
Fluoranthene	206-44-0	1	µg/L	n.d.	Not Detected	-
Benzo[k]fluoranthene	207-08-9	1	µg/L	n.d.	Not Detected	-
Acenaphthylene	208-96-8	1	µg/L	n.d.	Not Detected	-
Chrysene	218-01-9	1	µg/L	n.d.	Not Detected	-
Dibenz[a,h]anthracene	53-70-3	1	µg/L	n.d.	Not Detected	-
Benzo[a]anthracene	56-55-3	1	µg/L	n.d.	Not Detected	-
Acenaphthene	83-32-9	1	µg/L	n.d.	Not Detected	-
Phenanthrene	85-01-8	1	µg/L	n.d.	Not Detected	-
Fluorene	86-73-7	1	µg/L	n.d.	Not Detected	-
Naphthalene	91-20-3	1	µg/L	n.d.	Not Detected	-

## TEST RESULTS

Factory Name: Sanko Tekstil San. ve Tic. A.S. MARTELLİ Şubesi  
 Factory Address: Süleymaniye OSB Mahallesi 3.Cadde No:13 İnegöl/Bursa-Turkey

Items	CAS No.	Reporting Limit	Units	Discharged Wastewater	Discharged Wastewater	Discharged Wastewater
<b>Sample ID</b> TR2200994						
<b>Date of Sampling</b> 13-10-2022						
<b>Sampling Location</b> Discharged Point						
<b>Sampling Start Time</b> 09:00						
<b>Sampling End Time</b> 15:00						
<b>Date of Sample Received</b> 14-10-2022						
<b>Local Wastewater Discharge Requirement*</b>						
<b>Volatile Organic Compounds (VOCs)</b>						
Benzene	71-43-2	1	µg/L	n.d.	Not Detected	-
Xylene	1330-20-7	1	µg/L	n.d.	Not Detected	-
o-cresol	95-48-7	1	µg/L	n.d.	Not Detected	-
p-cresol	106-44-5	1	µg/L	n.d.	Not Detected	-
m-cresol	108-39-4	1	µg/L	n.d.	Not Detected	-

### Remarks:

\*"n.d." = Not Detected

\*\*"N/A" = Not Tested / Not Applicable

\*\*\*"-" = Not Required to be Test

^The test result is based on the calculation of selected element(s) and to the worst-case scenario

@ = The amine was detected according to EN ISO 14362-1:2017 with the reducing agent. A similar result was obtained from the procedure carried out without the reducing agent. According to EN ISO 14362-1:2017 Annex C.2.1.2.2, the

\*Data collection only for polyester production

\*\*Please refer to the details of the Local Wastewater Discharge Requirement in the Appendix Section

\*\*\*Test data is measured/provided by the client

\*\*\*\*\*

### TEST PARAMETERS

Factory Name: Sanko Tekstil San. ve Tic. A.S. MARTELLI Şubesi  
 Factory Address: Süleymaniye OSB Mahallesi 3.Cadde No:13 İnegöl/Bursa-Turkey

ITEMS	CAS No.	METHODS	ZDHC REQUIREMENTS			Units
			Foundational Limit	Progressive Limit	Aspirational Limit	
<b>Conventional Parameters</b>						
Temperature	-	USEPA 170.1, APHA 2550, GB/T 13195, DIN 38404-4 or IS 3025 (Part 9)	-	-	-	°C
Total Suspended Solids (TSS)	-	USEPA 160.2, APHA 2540-D, ISO 11923, GB/T 11901 or IS 3025 (Part 17)	-	-	-	mg/L
Chemical Oxygen Demand (COD)	-	USEPA 410.4, APHA 5220-D, ISO 6060, ISO 15705, HJ 828 or IS 3025 (Part 58)	-	-	-	mg/L
Total Nitrogen	-	USEPA 351.2, APHA 4500-N-B or C, APHA 4500-P-J, ISO 5663, ISO 11905, ISO 29441, HJ 636, GB 11891 or IS 3025 (Part 34)	-	-	-	mg/L
pH Value	-	USEPA 150.1, APHA 4500-H+, ISO 10523, GB/T 6920, HJ 1147-2020 or IS 3025 (Part 11)	-	-	-	-
Colour (436nm; 525nm; 620nm)	-	ISO 7887-B	-	-	-	m <sup>-1</sup>
5-Days Biochemical Oxygen Demand (BOD <sub>5</sub> )	-	USEPA 405.1, APHA 5210-B, ISO 5815-1, EN 1899-1, HJ 505 or IS 3035 (Part 44)	-	-	-	mg/L
Ammonium-N	-	USEPA 350.1, USEPA 350.3, APHA 4500 NH <sub>3</sub> -N-D, E, F, G or H, ISO 7150, ISO 11732, HJ 535, HJ 536 or IS 3025 (Part 34)	-	-	-	mg/L
Total Phosphorus	-	USEPA 200.7, USEPA 200.8, USEPA 365.4, USEPA 6010C, USEPA 6020A, APHA 4500-P-J, ISO 6878, ISO 11885, ISO 17294, GB/T 11893, IS 3025 (Part 31) or IS 3025 (Part 65)	-	-	-	mg/L
AOX	-	USEPA 1650, ISO 9562, EN ISO 9563 or HJ/T 83-2001	-	-	-	mg/L
Oil and Grease	-	USEPA 1664, APHA 5520-B or C, ISO 9377-1, HJ 637 or IS 3025 (Part 39)	-	-	-	mg/L
Phenol	-	APHA 5530-B or C, ISO 6439, ISO 14402, HJ 503 or IS 3025 (Part 43)	-	-	-	mg/L
Coliform	-	USEPA 9132, ISO 9308-1, EN ISO 9308-1 or GB/T 5750.12	-	-	-	Bacteria / 100mL
Persistent Foam	-	-	-	-	-	-
<b>Anions</b>						
Cyanide	-	<u>Wastewater:</u> USEPA 335.2, APHA 4500-CN, ISO 6703-1, 2, 3, ISO 14403-1, 2 or HJ 484 <u>Sludge:</u> With reference to USEPA 9013, USEPA 9014, USEPA 9213, ISO 11262, HJ 745 or CN converted to HCN by reflux-distillation to NaOH followed by colourimetry or ISE	-	-	-	mg/L
Sulfide	-	APHA 4500-S <sub>2</sub> -D, E, G or I, ISO 10530, GB/T 16489 or IS 3025 (Part 29)	-	-	-	mg/L
Sulfite	-	USEPA 377.1, ISO 10304-3 or EN ISO 10304-3	-	-	-	mg/L
<b>Metals<sup>1</sup></b>						
Total Antimony (Sb)	7440-36-0		0,1	0,05	0,01	mg/L
Total Chromium (Cr)	7440-47-3		0,2	0,1	0,05	mg/L
Total Cobalt (Co)	7440-48-4	<u>Wastewater:</u> With reference to USEPA 200.7, USEPA 200.8, USEPA 245.1, USEPA 245.2, USEPA 1631 E, USEPA 6010C, USEPA 6020A, ISO 11885, ISO 12846, ISO 17294, ISO 17852, ISO 18412, GB 7466, GB 7467, GB 7472, GB 7475, GB 11907, HJ 597, HJ 694, HJ 700, IS 3025 (Part 2), IS 3025 (Part 41), IS 3025 (Part 42), IS 3025 (Part 47), IS 3025 (Part 48), IS 3025 (Part 49), IS 3025 (Part 52), IS 3025 (Part 54), IS 3025 (Part 65) or acid digestion followed by ICP or ICP/MS analysis	0,05	0,02	0,01	mg/L
Total Copper (Cu)	7440-50-8		1	0,5	0,25	mg/L
Total Nickel (Ni)	7440-02-0		0,2	0,1	0,05	mg/L
Total Silver (Ag)	7440-22-4	<u>Sludge:</u> With reference to USEPA 3050, USEPA 3051A, USEPA 3060A, USEPA 6010D, USEPA 6020B, USEPA 7471B or acid/peroxide digestion followed by ICP or ICP/MS analysis	0,1	0,05	0,005	mg/L
Total Zinc (Zn)	7440-66-6		5,0	1,0	0,5	mg/L
Total Arsenic (As)	7440-38-2		0,05	0,01	0,005	mg/L
Total Cadmium (Cd)	7440-43-9		0,1	0,05	0,01	mg/L

**TEST PARAMETERS**

Factory Name: Sanko Tekstil San. ve Tic. A.S. MARTELLI Şubesi  
 Factory Address: Süleymaniye OSB Mahallesi 3.Cadde No:13 İnegöl/Bursa-Turkey

ITEMS	CAS No.	METHODS	ZDHC REQUIREMENTS			Units
			Foundational Limit	Progressive Limit	Aspirational Limit	
Total Lead (Pb)	7439-92-1	<u>Wastewater:</u> With reference to USEPA 200.7, USEPA 200.8, USEPA 245.1, USEPA 245.2, USEPA 1631 E, USEPA 6010C, USEPA 6020A, ISO 11885, ISO 12846, ISO 17294, ISO 17852, ISO 18412, GB 7466, GB 7467, GB 7472, GB 7475, GB 11907, HJ 597, HJ 694, HJ 700, IS 3025 (Part 2), IS 3025 (Part 41), IS 3025 (Part 42), IS 3025 (Part 47), IS 3025 (Part 48), IS 3025 (Part 49), IS 3025 (Part 52), IS 3025 (Part 54), IS 3025 (Part 65) or acid digestion followed by ICP or ICP/MS analysis	0,1	0,05	0,01	mg/L
Total Mercury (Hg)	7439-97-6	<u>Sludge:</u> With reference to USEPA 3050, USEPA 3051A, USEPA 3060A, USEPA 6010D, USEPA 6020B, USEPA 7471B or acid/peroxide digestion followed by ICP or ICP/MS analysis	0,01	0,005	0,001	mg/L
Chromium-Hexavalent (Cr-VI)	7440-47-3, 18540-29-9	<u>Wastewater:</u> With reference to USEPA 218.6, ISO 18412, GB 7467, IS 3025 (Part 52) or solvent extraction and derivatisation followed by UV/VIS analysis <u>Sludge:</u> With reference to USEPA 3060A, USEPA 7196, USEPA 7199 or alkaline digestion followed by colourimetric UV/VIS or colourimetric IC analysis	0,05	0,005	0,001	mg/L
<b>Alkylphenols (APs) and Alkylphenol Ethoxylates (APEOs)<sup>1</sup></b>						
NP / OP		<u>Wastewater:</u> With reference to ISO 18857-2 or ASTM D7065 followed by GC/MS or LC/MS(-MS) analysis <u>Sludge:</u> With reference to USEPA 3540/3541, USEPA 3550, USEPA 3560, ISO 18857-2 or ASTM D7065 followed by GC/MS or LC/MS analysis				
NPEO / OPEO		<u>Wastewater:</u> With reference to ISO 18254-1, ISO 18857-2 or ASTM D7065 followed by GC/MS or LC/MS analysis <u>Sludge:</u> With reference to ISO 18254-1, ISO 18857-2 or ASTM D7065 followed by GC/MS or LC/MS analysis				
<b>Chlorobenzenes and Chlorotoluenes (COCs)<sup>1</sup></b>						
		<u>Wastewater:</u> With reference to USEPA 8260B, USEPA 8270D or solvent extraction followed by GC/MS analysis <u>Sludge:</u> With reference to USEPA 3540/3541, USEPA 3550, USEPA 3560, USEPA 3650, USEPA 8270 or solvent extraction followed by GC/MS analysis				
<b>Chlorophenols<sup>1</sup></b>						
		<u>Wastewater:</u> With reference to USEPA 8270D, ISO 14154:2005 or solvent extraction and derivatisation with KOH, acetic anhydride followed by GC/MS analysis <u>Sludge:</u> With reference to ISO 14154, acid/base liquid extraction, acetylation or liquid/liquid extraction followed by GC/MS analysis				
<b>Dyes - Azo (Forming Restricted Amines)<sup>1</sup></b>						
		<u>Wastewater:</u> With reference to EN 14362-1, EN 14362-3 or solvent extraction with sodium dithionite reduction followed by GC/MS or LC/MS analysis <u>Sludge:</u> With reference to ISO 14362-1, ISO 14362-3 or solvent extraction with sodium dithionite reduction followed by GC/MS or LC/MS analysis				
<b>Dyes - Carcinogenic or Equivalent Concern<sup>1</sup></b>						
		<u>Wastewater:</u> Solvent extraction followed by LC/MS analysis <u>Sludge:</u> With reference to ISO 16373 or solvent extraction followed by LC/MS analysis				
<b>Dyes - Disperse (Sensitising)<sup>1</sup></b>						
		<u>Wastewater:</u> Solvent extraction followed by LC/MS analysis <u>Sludge:</u> With reference to ISO 16373 or solvent extraction followed by LC/MS analysis				
<b>Flame Retardants<sup>1</sup></b>						
		<u>Wastewater:</u> With reference to USEPA 527, USEPA 8270, USEPA 8321B, ISO 22032 or solvent extraction followed by GC/MS or LC/MS analysis <u>Sludge:</u> With reference to ISO 22032 or solvent extraction followed by GC/MS or LC/MS analysis				
<b>Glycols<sup>1</sup></b>						
		<u>Wastewater:</u> With reference to USEPA 8270 or solvent extraction followed by GC/MS or LC/MS analysis <u>Sludge:</u> With reference to USEPA 8270D, ISO 22892 or solvent extraction followed by GC/MS or LC/MS analysis				



### TEST PARAMETERS

Factory Name: Sanko Tekstil San. ve Tic. A.S. MARTELLI Şubesi  
 Factory Address: Süleymaniye OSB Mahallesi 3.Cadde No:13 İnegöl/Bursa-Turkey

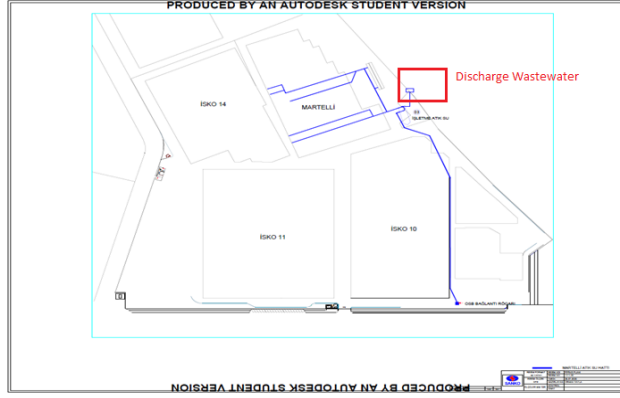
ITEMS	CAS No.	METHODS	ZDHC REQUIREMENTS			Units
			Foundational Limit	Progressive Limit	Aspirational Limit	
<b>Halogenated Solvents</b>		<u>Wastewater:</u> With reference to USEPA 8260B, Headspace, Purge-and-Trap or solvent extraction followed by GC/MS analysis <u>Sludge:</u> With reference to USEPA 5035, USEPA 50211, USEPA 8010 or solvent extraction followed by GC/MS analysis		-		
<b>Organotin Compounds<sup>1</sup></b>		<u>Wastewater:</u> With reference to ISO 17353 and derivatisation with sodium diethyl dithiocarbamate followed by GC/MS analysis <u>Sludge:</u> With reference to ISO 23161 and derivatisation with sodium diethyl dithiocarbamate followed by GC/MS analysis		-		
<b>Perfluorinated / Polyfluorinated Chemicals (PFCs)<sup>1</sup></b>						
FTOHs (Non-ionic)		<u>Wastewater:</u> With reference to DIN 38407-42 or CEN/TS 15968 and derivatisation with acetic anhydride followed by GC/MS analysis <u>Sludge:</u> With reference to DIN 38407-42 and derivatisation with acetic anhydride followed by GC/MS analysis		-		
Others (Ionic)		<u>Wastewater:</u> With reference to DIN 38407-42 or CEN/TS 15968 followed by LC/MS or LC/MS(-MS) analysis <u>Sludge:</u> With reference to DIN 38407-42 followed by LC/MS or LC/MS(-MS) analysis				
<b>Ortho-Phthalates<sup>1</sup></b>		<u>Wastewater:</u> With reference to USEPA 8270D, ISO 18856 or solvent extraction followed by GC/MS analysis <u>Sludge:</u> With reference to USEPA 3540/3541, USEPA 3550, USEPA 3560, ISO 18856 or solvent extraction followed by GC/MS analysis		-		
<b>Polycyclic Aromatic Hydrocarbons (PAHs)<sup>1</sup></b>		<u>Wastewater:</u> With reference to USEPA 8270, DIN 38407-39 or solvent extraction followed by GC/MS analysis <u>Sludge:</u> With reference to USEPA 3540/3541, USEPA 3550, USEPA 3560, USEPA 3650, USEPA 8270 or solvent extraction followed by GC/MS analysis		-		
<b>Volatile Organic Compounds (VOCs)<sup>1</sup></b>		<u>Wastewater:</u> With reference to USEPA 8260, ISO 11423-1, Headspace, Purge-and-Trap or solvent extraction followed by GC/MS analysis <u>Sludge:</u> With reference to USEPA 5035, USEPA 5021, USEPA 8260, DIN 38407 Part 43 or solvent extraction followed by GC/MS analysis		-		

\*\*\*\*\*

## PIPING PLAN

Factory Name: Sanko Tekstil San. ve Tic. A.S. MARTELLİ Şubesi  
 Factory Address: Süleymaniye OSB Mahallesi 3.Cadde No:13 İnegöl/Bursa-Turkey

PRODUCED BY AN AUTODESK STUDENT VERSION



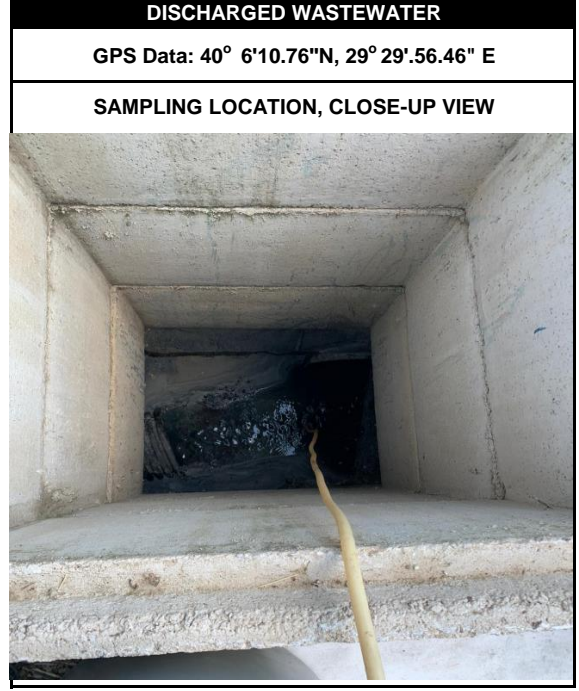
PRODUCED BY AN AUTODESK STUDENT VERSION

\*\*\*\*\*

## SAMPLING PHOTOS

Factory Name: Sanko Tekstil İşletmeleri San. ve Tic. A.S. Martelli Şubesi  
Factory Address: Süleymaniye OSB Mahallesi 3.Cadde No:13 İnegöl/Bursa-Turkey

Doc. No.: CTSI-F-5.10-265NF / First Publish Date: 22.04.2019 / Revision Date / No.:17.04.2020 / 1



**LOCAL WASTEWATER DISCHARGE REQUIREMENT**

Factory Name: Sanko Tekstil San. ve Tic. A.S. MARTELL Şubesi  
 Factory Address: Süleymaniye OSB Mahallesi 3.Cadde No:13 İnegöl/Bursa-Turkey

PARAMETER	UNIT	COMPOSITE SAMPLE 2 OR 24 HOURS
CHEMICAL OXYGEN DEMAND (COD)	(mg/L)	5000
SUSPENDED SOLIDS	(mg/L)	500
OIL AND GREASE	(mg/L)	200
TOTAL PHOSPHORUS	(mg/L)	10
TOTAL CHROMIUM	(mg/L)	4
CHROMIUM VI	(mg/L)	1
LEAD	(mg/L)	4
CYANIDE	(mg/L)	1
CADMIUM	(mg/L)	1
IRON	(mg/L)	20
FLORIDE	(mg/L)	30
COPPER	(mg/L)	6
ZINC	(mg/L)	10
MERCURY	(mg/L)	0,2
SULFATE	(mg/L)	3000
TOTAL KJELDAHL NITROGEN	(mg/L)	50
AMMONIUM NITROGEN (NH <sub>4</sub> <sup>+</sup> -N)	(mg/L)	5
pH	-	6-9,5
COLOR	(Pt-Co)	3000
TEMPERATURE	°C	50

\*\*\*\*\* END OF REPORT \*\*\*\*\*